

The Official Newsletter of the American Sociological Association Section on Ethnomethodology and Conversation Analysis



Spring 2016

Volume 8, Issue 4, p.1

2015-2016 EMCA Section Officers

Chairs

Robert Dingwall (Dingwall Enterprises)
robert.dingwall@ntlworld.com

Mardi Kidwell (University of New Hampshire)
mardi.kidwell@unh.edu

Treasurer

Bob Moore (IBM)
rjmoore@us.ibm.com

Council

Waverley Duck (Wayne State University)
wod1@pitt.edu

Morana Alac (UC San Diego)
malac@usc.edu

Patrick Watson (University of Waterloo)
pwatson@uwaterloo.ca

Aug Nishizaka (Chiba University)
augnish@soc.meijigakuin.ac.jp

Former Chairs

Dirk vom Lehn (King's College London)
dirk.vom_lehn@kcl.ac.uk

Erik Vinkhuyzen (Palo Alto Research Centre)
evinkhuy@parc.com

Dear EMCA Community,

We have now pretty much concluded the main business of organizing sessions, reviewing papers, managing the awards process and generally getting everything in shape for the Annual Meeting in August. As usual, we are impressed with the enthusiasm with which section members approach the opportunity to present papers and we are sure that their contributions will more than justify the trip.

Getting everything in order does, though, leave us a little space before the end of our term of office to reflect on a couple of things that are troubling us. We would like to share these with you – and possibly discuss at least the first of them at the business meeting.

As you all know, we are a very small section. Although our membership is very loyal and has held up well relative to steep declines in some other sections, it is still shrinking slowly. The effects are being increasingly felt in the challenge of actually running the section. This year, it has been really difficult to assemble a choice of candidates for section offices, ...

In This Issue:

EMCA Awards.....	p.3-4
Recognition for EMCA scholars.....	p. 4
Calls for papers.....	p.5
Upcoming workshops.....	p.5
Upcoming events and conferences.....	p.6
Graduate student biographies.....	p.7-10



... as required by ASA rules, or to persuade people to serve on the various committees that are supposed to support us and widen participation in the governance of the section. Quite a lot of time has been spent by us, and others, in getting people to take on essential roles. To some extent, this has been at the expense of some of the strategic things we are supposed to do as representatives of the section to ASA. We all need to be honest with ourselves and accept that the section will only keep going if all its core members serve multiple times in multiple positions. We have detected a sense of fatigue among some particularly committed members who have (valiantly) served repeatedly since the formation of the section. The work of running the section needs to be more equitably distributed. If you have not yet served, have not served for a while or have only served once or twice, we do think that you need to search your conscience about the reasons you are giving for declining requests to contribute again. You are not blocking opportunities for new members – section chairs will always be mindful of the need to engage them in the section's work. What you are doing is jeopardizing the actual viability of the section.

Our second concern is with the tenor of some of the exchanges that took place in Chicago, which we have also witnessed, or gotten word of, taking place since at other conferences. A degree of contentiousness has emerged that goes beyond lively and thought-provoking disagreement and debate. We are concerned that this is undermining our cohesiveness as a section. We simply can't survive without each other. Of course the section must be a place where disagreement and debate are legitimate dimensions of scholarly discourse. At the same time, such exchanges can be conducted with a higher measure of civility. Some of our 'big beasts' might appropriately reflect on the image of EMCA that is presented by banging heads like a pair of tackles on a football field. Is it any wonder that the kids are turning to soccer?

We look forward to seeing as many of you as possible in Seattle. Robert was there last year for the Law & Society meetings and says it is such a fun city he cannot wait to get back. He did not exactly leave his heart – more a decayed tooth and a large bill for emergency dental care – so he is particularly keen to enjoy the many amenities of the city without any competing distractions!

Warmly,

Mardi Kidwell

Robert Dingwall



Pollner Prize in Ethnomethodology: Michael DeLand

"Basketball in the Key of Law: The Significance of Disputing in Pick-Up Basketball." 2013 Law & Society Review. 47(3): 653-85.

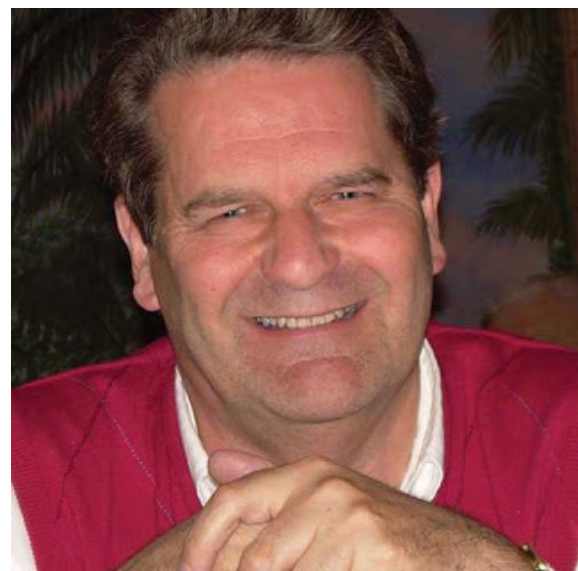
From the committee: In this essay DeLand masterfully shows how disputing rule violations in pick up basketball serves to frame the game as a serious competition in which players hold a genuine stake. As he notes, disputes over rule violations in the context pick up basketball present a number of fascinating analytic opportunities for those interested in the rule of law as a mundane practical achievement—a topic Mel Pollner made famous through his ethnographic investigations in traffic courts. Drawing on Pollner's

concept of "reality disjunctures," DeLand highlights how competing versions of what happened in the game (and whether what happened constitutes a rule violation) are adjudicated in the absence of unequivocal legal authorities. The essay makes a compelling contribution to the Pollnerian legacy.

Lifetime Achievement Award: John Heritage

From the committee: In his letter supporting 2015 winner Jeff Coulter's (Boston) nomination of John Heritage (UCLA) for the 2016 Lifetime Achievement Award, Paul Drew (Loughborough) writes: "John is a scholar of the highest distinction, having made – and continuing to make – an outstandingly original contribution to theory and research in ethnomethodology/conversation analysis. Moreover his special achievement is to have demonstrated the theoretical and empirical relevance of EM/CA to sociology and social science disciplines more widely, and indeed to have made it accessible to a very wide social science audience."

Drew cites Heritage's contribution in three areas: in sociological theory Garfinkel and Ethnomethodology, especially, involves "a quite fundamental reconceptualisation of the theory of action and the sociology of knowledge;" in the empirical analysis of social action in conversation Structures of Social Action, with Max Atkinson, is, in particular, "a definitive collection of empirical studies in CA;" in the study of institutional discourse and interaction, notably in the mass media (including innovative work with Steven Clayman) and in medical care settings (including with Doug Maynard), 30 of his 62 publications since 1998 comprise "a stunning contribution to the field of medical interaction, [one that is] innovative, imaginative, deeply scholarly and equally deeply 'practical'." These qualities are reflected in calls from around the world to teach EMCA, and to present at international conferences.



Graduate Student Paper Award and Distinguished Paper Award: TBD

Please note that these awards are under review and will be announced in due course.

Recognition for EMCA Scholars

Two prominent UK EMCA scholars have been elected as Fellows of the UK Academy of Social Sciences. This is the national academy of academics, learned societies and practitioners in the social sciences. Its mission is to promote social science in the United Kingdom for the public benefit. Fellows are distinguished scholars and practitioners from academia and the public and private sectors.

Professor Alison Pilnick is a long-standing member of the EMCA section. Her election is based on the excellence of her own research and teaching, her professional service and

her contribution to the improvement of practice in a number of health professions. Her PhD thesis on advice giving by pharmacists in paediatric oncology led to substantial changes in the way medicines were given to patients on complex medication regimes, work which has also influenced practice in relation to patients with HIV/AIDS. Her research on the way in which informed consent is obtained brought about major alterations in the approach of the participating anaesthetists and has also influenced midwifery and obstetric practice in relation to genetic tests and risk communication. She received her award at a ceremony held in Cardiff in December 2015.



Professor J Maxwell (Max) Atkinson was one of the UK pioneers of EMCA at the University of Manchester. From there, he moved to the University of Oxford, where he led a CA programme on law and language, and carried out research on political oratory, which brought him an international reputation. He became frustrated with UK academic life in the 1980s and left to establish his own consultancy, *Atkinson Communications*. Through this company, he has worked with leading politicians and senior executives in major corporations, government agencies, and professional associations to develop their speaking and presentational skills. His work in this field has recently also been recognized by a Lifetime Achievement Award from the Guild of Speechwriters. He has continued to popularize the EMCA basis of his practice through books for a business and executive market. Max will receive his award at a ceremony in London at the end of June 2016.

Calls for Papers: Conferences

Interactional competences and practices in a second language (ICOP_L2). University of Neuchâtel, Switzerland. Jan. 18-20, 2017. http://www2.unine.ch/islc/icop_l2. DEADLINE May 15, 2016.

6th Annual Meeting of the Language and Social Interaction Working Group (LANSI). Columbia University, United States. Oct. 7-8, 2016. www.tc.edu/lansi. DEADLINE May 31.

13th Anéla Study Group Discourse Analysis (AWIA). Ghent University, The Netherlands. Sept. 29-30, 2016. <http://www.anela.nl/activiteiten/awia-symposium/> DEADLINE June 1.

4th Conference on Structure, Use and Meaning (SUM). Braşov, Romania. Sept. 21-24, 2016. <http://unitbv.ro/arta/Conferences/SUM2016> DEADLINE June 15.

SYMBIOTIC 2016. Padua University, Italy. Sept. 29-30, 2016. <http://symbiotic2016.org> DEADLINE June 15.

Intersubjectivity in Action. University of Helsinki, Finland. May 11-13, 2017. blogs.helsinki.fi/iiia-2017 DEADLINE for abstracts Sept. 15 2016 (opens May 15)

Calls for Papers: Special Issues & Journals

Special Issue of Culture and Organization - Mediated Business: Living the organizational surroundings. <http://explore.tandfonline.com/cfp/bes/gsco-mediated-business> DEADLINE Oct. 1, 2016.

Discourse and Conversation Analysis (Gesprächsforschung). www.gespraechsforschung-online.de/en/board.html. General invitation to researchers of CA, interactional linguistics, and linguistic ethnography to submit papers in English or German.

Social Psychology Quarterly. <http://spq.sagepub.com>. General invitation to researchers in the EMCA subsection of the ASA to consider submitting to SPQ.

Upcoming Workshops

May 24, 2016. British Psychological Society, London Office, UK. **An introduction to conversation analysis.** <https://www.bps.org.uk/events/introduction-conversation-analysis>

Jun. 6-8, 2016. Università per Stranieri di Siena, Italy. **2nd International Training Workshop on Classroom Interaction Competence.**

Jun. 16-17, 2016. University of York, UK. **Action sequencing workshop.** <http://www.york.ac.uk/sociology/shortcourses/>

Jul. 11-14, 2016. Groningen, The Netherlands. **International Academy for Conversation Analysis (IACA16).** <http://www.iaca16.nl>

Aug. 29 - Oct. 7, 2016. Linköping University, Sweden. **Interaction analysis course (for credit).** <https://liu.se/utbildning/kurs/763A51?l=sv>



Upcoming Events

Jun. 20, 2016 University of York, UK. **Postgraduate Conference on International Education: Classroom Interactions.** <http://wrdtc.ac.uk/event/international-education-classroom-interactions/>

Jun. 20-22, 2016. Maria Curie-Sklodowska University, Poland. **2nd Conference of the International Association for Cognitive Semiotics.** <http://iacs2016.umcs.lublin.pl/>

Jul. 6-8, 2016. Interactions Multimodales par ECran/Screen-based multimodal interactions (IMPEC) 2016. Université Lyon 2, France. <http://impec.sciencesconf.org/resource/page/id/8>

Sept. 15-16, 2016. University of Salford, Manchester, UK. **4th International Interdisciplinary Symposium: Microanalysis of Online Data (MOOD-S).** <http://moodnetwork.ruhosting.nl/cfp-mood-s-2016-now-available/>

Sept. 30-Oct. 1, 2016. Rutgers University, United States. **Extending Play 3: Temporalities of Play.** <http://extendingplay.rutgers.edu/>

Nov. 3-5, 2016. Sultan Qaboos University, Oman. **3rd International Conference on Language, Linguistics, Literature and Translation: Connecting the Dots in a Glocalized World.** <http://squconference2016.com/>

Nov. 3-5, 2016. University of Copenhagen, Denmark. **6th International Conference on Applied Linguistics and Professional Practice (ALAPP): Transnational flows and professional practice.** <http://alapp2016.ku.dk/>

Nov. 10-13, 2016. **102nd Annual Convention of the National Communication Association (NCA).** Philadelphia, United States. <http://www.natcom.org/convention/>

Nov. 23-25, 2016. Oslo, Norway. **4th Nordic Interdisciplinary Conference on Discourse and Interaction.** <http://www.hf.uio.no/iln/english/research/news-and-events/events/conferences/2016/nordisco/index.html>

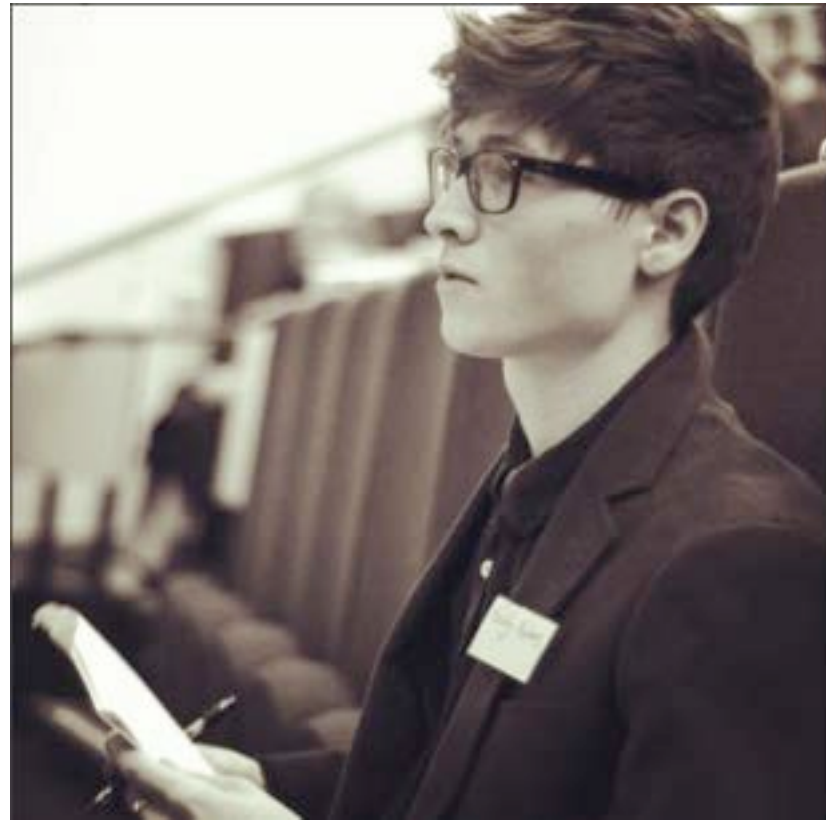
*Nov. 22 Pre-conference workshops: Critical Discourse Analysis; Conversation Analysis.

**Edward J.B. Holmes, University of York, University of Leeds,
United Kingdom**

The majority of my academic résumé has been in affiliation with University of York, into which I first matriculated in 2011. Upon completion of my BA Sociology, I was awarded the Bridge Scholarship for the MA in Social Research. Whilst the incumbent of this award I secured Economic and Social Research Council funding to undertake a PhD in Sociology – supervised by Dr Merran Toerien and Dr Steph Lawler. Since January 2016, I have held a teaching position in the School of Languages, Cultures and Societies at the University of Leeds.

I was first introduced to Conversation Analysis (CA) as an undergraduate by Professor Paul Drew, Professor Celia Kitzinger, Dr Merran Toerien and Dr Clare Jackson. Using the method in my BA dissertation, I investigated the use of “Just-prefaced” injunctions as a resource for managing the occurrence of advice-resistance in ordinary talk. In my MA thesis, I explored the vocal and non-vocal constituencies of social interaction, analysing the lamination of talk, gesture and gaze in Type 2 diabetes consultations. In this research, I identified one multimodal practice employed by healthcare-professionals to reinitiate the progression of the clinical checklist after having incurred disruption. This paper will be presented at the ‘Gesture-Creativity-Multimodality’ conference in July 2016.

In my doctoral research, I use CA to investigate the interactional practices and sequential environments in and through which “social class” is made relevant in naturally-occurring forms of talk-in-interaction. My main analytic interest lies in showing how CA functions as – and can be used to contribute insights for – Social Theory. Alongside this, however, I remain active in using CA in empirical research to canvass the seen-but-unnoticed details of talk-in-interaction. Most recently, with Dr Clare Jackson and Dr Victoria Land, I have finished a collaborative CA project into the structures and distribution of decision-making in situated labour-ward interactions.



Recent Publications

Drew, P., Hepburn, A., Margutti, P. & Galatolo, R. (eds) (2016). Apologies in Discourse. Special issue of *Discourse Processes*, 53 (1-2).

Keel, S. (2016). *Socialization: Parent-child interaction in everyday life*. Abingdon: Routledge.

Person, R.F. (2016). *From conversation to oral tradition: A simplest systematics for oral traditions*. Abingdon: Routledge.

Robinson, J. (2016). *Accountability in interaction*. Oxford: Oxford University Press.

Schilt, K., Fenstermaker, S. & O'Brien, J. (2016). Garfinkel and 'Agnes': Fifty years of transgender studies. Special symposium in *Symbolic Interaction*, 39 (2).

Brooke Scriven, Charles Sturt University, Australia

I have recently completed my doctoral studies in the School of Education at Charles Sturt University, Australia, under the supervision of Dr Christina Davidson and Dr Christine Edwards-Groves. I reflect on my uptake of ethnomethodological conversation analysis in rural Australia as a continuation of its global reach (as previously documented by Psathas, 2008). My interest in EM/CA was sparked during my Honours Degree by my now PhD supervisor Dr Christina Davidson. I became a doctoral scholar and research assistant in a large Australian funded project titled, *Interacting with knowledge, interacting with people: Web searching in early childhood*, led by Professor Susan Danby (Queensland University of Technology). The qualitative component of the project examined young children's interactions during web searching and technology use at preschool and home.

Drawing on video data of this large funded project, my doctoral thesis analysed how a 3-year-old child socially accomplished digital literacy practices when using technologies at home. Among other findings my research contributed understanding of the taken-for-granted interactional methods by which the child produced digital literacies with her family. An exciting challenge has been transcribing complex video recordings of the child's multiparty interactions during technology use. This has led to my development of, and experimentation with, transcription symbols to represent embodied actions particular to technology use.

During my doctoral studies I have enjoyed making connections and presenting my research at conferences for the Australasian Institute of Ethnomethodology and Conversation Analysis (AIEMCA), International Pragmatics Association (IPrA), and International Institute of Ethnomethodology and Conversation Analysis (IEMCA). I am eager to continue employing EM/CA to investigate how young children produce digital literacy practices in everyday family interactions at home.



Burak S. Tekin, University of Basel, Switzerland

Having obtained my BA degree in language teaching from Hacettepe University, Turkey, and my MA degree in applied linguistics from Newcastle University, UK, I am currently a PhD fellow in linguistics at the HPSL doctoral school at the University of Basel, Switzerland. My doctoral project is examining interactions between gamers and co-present others while they are engaging in video gaming activities within home settings. I am particularly interested in how audience members instruct the gamers, how gamers demonstrate their skillful performance, and how transitions among gamers are coordinated. My video data has been collected during my fieldwork in Turkey. Turkish talk-in-interaction is still relatively understudied from an EMCA point of view. Delving into a language from an interactional perspective has been exciting and inspiring.

Being a member of a vigorous research team in Basel, and being trained by Lorenza Mondada on data collection, multimodal transcription and analysis in a wide array of languages and settings, I must admit that I am enjoying my EMCA journey so far. It has been a privilege to take part in such an active group led by an acclaimed scholar.

I am also working on a couple of side projects. First, I am interested in how photographers and clients manage and coordinate their actions in professional studios. Recently, I have completed a book chapter that analyses how photographers and clients negotiate and accomplish different poses in a professional studio. Second, I also engage in Lorenza's project at the University of Helsinki on "Reconsidering language and action through embodiment", getting involved in many aspects, including data collection and analysis.

Jack Joyce, University of York, United Kingdom

I'm Jack and I'm a Conversation Analyst. My Conversation Analysis trajectory began at York St John University, UK where I studied for my BA (Hons) English Language and Linguistics concluding with my thesis using Membership Categorisation Analysis of initial interactions. I am currently at the University of York, UK studying for my MA Social Research (in the Sociology department) and I'm currently on the lookout for MCA/CA PhD opportunities.

I was fortunate enough whilst at York St John University to work with Prof. Chris Hall and Chris Robson on our paper (Investigating the lexico-grammatical resources of a non-native user of English) and present the findings at the British Association of Applied Linguistics 2014 conference. Likewise, I was delighted to have the opportunity to organise the Undergraduate Linguistic Association of Britain 2015 conference.



Right now at the University of York I'm working on my thesis 'Decision-making in non-native speaker medical consultations' using CA to analyse the consultations within which an interpreter is present, particularly focusing on the jointly made decisions (or lack thereof) regarding treatment. Similar to my time at York St John University I am thrilled to be again organising a conference 'International Education: Classroom Interactions' with Veronica Gonzalez Temer.

My next step is to follow up on invites from two of the largest employers in York, UK and Hull, UK to video-record workplace interactions and analyse the data using Membership Categorisation Analysis with a focus on the normative and discriminatory practice in order to improve workplace training.



Verónica González Temer, University of York, United Kingdom

After studying Linguistics in Chile, working as a teacher for years, and doing an MA in Phonetics in York, I was lucky to get another scholarship from the Chilean government to pursue a PhD in Language and Communication in 2013. My study does a multimodal analysis of food assessments in Chilean Spanish interaction. Richard Ogden and Merran Toerien are my supervisors, which is fantastic as they come from different disciplines and give me great feedback with different perspectives. As my data consists of Chilean participants tasting British foods that are unknown to them, epistemicity and the interaction with objects play important roles. Now into my third year, I'm working on my analytical chapters trying to explicate assessments in a context where assessing is the main activity. What are the resources used to mobilise assessments (focusing mainly on gaze and facial gestures) and how assessments are negotiated for the sake of agreement?



It is wonderful to be in York as I've had amazing training from the White Rose. I have also spent a month at the CoE in Helsinki as a visiting fellow which I enjoyed enormously (even in February!). I'm actively involved in the EMCA doctoral network, have attended workshops in Loughborough as well as the EMCA bootcamp in Denmark. I have presented at the Revisiting Participation conference in Basel, the EMCA Manchester meeting, and IPra 2015 in Antwerp, where I copresented with Richard Ogden about the Mm token in Chilean Spanish.

At the moment I'm also working with Luis Manuel Olguín on an online project (AC Latino) to bring Latin American CA researchers together. There aren't too many of us, but we'll take that as a challenge, and try to strengthen our connections to position Conversation Analysis as a field of study in our respective home countries.

Submit your biography and get it published in the EMCA Section Newsletter!

You or your graduate students should consider writing a biography for the newsletter. We're always looking for more biographies. Please submit to them to the newsletter editor, Emily Hofstetter, at e.c.hofstetter@lboro.ac.uk. We'll put it in the next available slot!

EMCA

**You should become a
member of**

The American Sociological Association Section on Ethnomethodology and Conversation Analysis

Section Membership Form

For ASA Membership information and to join *or* renew online, visit:

<http://www.asanet.org/members/join.cfm>

ASA Membership Dues

- Regular** \$50-\$360
(sliding scale, based on income)
- Associate** \$103
- Student** \$50
- Emeritus** \$50
- International** \$55

Name:

Address:

Email:

Mail to:

Membership Services
American Sociological Association
1430 K Street, NW - Suite 600
Washington DC 20 005

I am an ASA Member and want to join the **Ethnomethodology and Conversation Analysis Section**. Enclosed is a check for \$10.00 (\$5.00 for students) for 2016 section dues.

*Make checks payable to **American Sociological Association** (and please put 'EMCA section dues' on the memo line of your check!)*