

EMCA NEWSLETTER

Newsletter of the American Sociological Association's section on
Ethnomethodology and Conversation Analysis

Message From the Chairs

Jay Meehan and Tanya Stivers

For newsletter call for papers 2021

We are issuing a Call for paper submissions to our Section Sessions (and Regular Sessions) for the 2021 ASA Meetings which will be held virtually due to Covid 19. Last year, our Section had very robust attendance and lively discussions for each of our panels in this virtual format. We expect we'll be even better with a year of practice!

The panel options are described below and we encourage everyone to submit in hopes of adding further panels. The submissions portal is now open and will close on **February 3 at 11:59 PM Eastern time**. One important change: Submitters may elect to submit either full papers (15-35 pages) or extended abstracts (3-5 pages). If participants submit an abstract and it is accepted, the full paper will be expected to be sent to the session participants at least one month before the Annual Meeting. We are hopeful that this change will encourage more submissions.

<https://www.asanet.org/annual-meeting-2021/submissions>

ASA's submission process is straightforward with one exception: When you submit, you are first asked to select either "Regular Session on Ethnomethodology and Conversation Analysis" or a "Section Session." The regular sessions are organized by Anne Rawls (arawls@bentley.edu). The section sessions are organized by Tanya Stivers (stivers@soc.ucla.edu) and Jay Meehan (meehan@oakland.edu). We encourage papers that are reporting your new work using EM and/or CA methods in all of these sessions. The organizers will work together to place papers in panels.

The section has two panels currently: "New Directions in Ethnomethodology and Conversation Analysis" and "Current Research in Ethnomethodology and Conversation Analysis." We welcome research that utilizes other methods but would be of interest to our section's membership.

To maximize the programming of papers, after you select a first session choice, you will be asked if you would like your paper to be considered by other alternate session choices (2nd and 3rd choices). Please list as your alternate choices the other panel options listed above to enable us as organizers to maximize the programming and provide a nice group [continued]



CURRENT BOARD

Secretary/
Treasurer

Patrick Watson

Council Members

Kevin A. Whitehead

Sarah Hitzler

David R. Gibson

Dirk vom Lehn

Anssi Peräkylä

Gary C. David

Newsletter Editors

Kristella Montiegel

Luis Manuel Olguin

Please visit our
website for more
information:

[HTTP://ASA-
EMCA.BLOGSPOT.COM](http://asa-emca.blogspot.com)



Check out our
Facebook page!

of papers for us to hear in August! If you still find this confusing (it is!) please contact any of us organizers (Jay, Anne, or Tanya).

Membership

We are excited to issue an **EMCA holiday challenge** to our membership: Bring one new member on board.

One way this can be done is to gift an ASA membership to a student and/or a section membership to a colleague or student who is a member already. You can do this by logging here. The earlier you give a gift membership, the longer the member can enjoy the benefits of membership and learn more about the section. Instructions are below.

- To purchase a gift ASA membership for students: Once you have accessed the ASA member portal, click "Purchase a gift membership for a student" under "Contribute/Give." Search for students by name. You can also create a new contact record if you can't find the student in the database.

Your gift will be redeemable by the recipient for an ASA student membership. The recipient will receive an email with the gift credit immediately after your purchase. Recipients will need to complete a membership form through the ASA member portal in order to redeem their gift membership. Gift memberships are not refundable if unredeemed within 30 days of purchase. Gift memberships are not tax deductible.

- To purchase a gift section membership: Once you have accessed the ASA member portal, click "Purchase a gift section membership" under Contribute/Give. Select the section and search for your recipient by first and last name.

Section membership requires a current ASA membership. Only ASA members who do not already have a membership in that section are eligible to receive the gift. Immediately after you make your payment, the recipient will receive an email that includes your name along with the notification of the section gift. Section gift recipients do not need to take any action to redeem gift section membership. Gifts are not tax deductible.

Recent and Forthcoming Publications

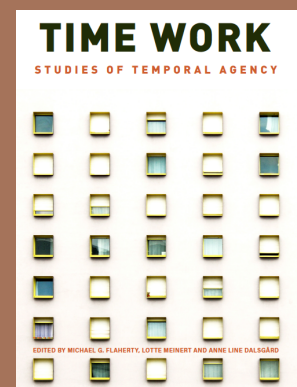
Time Work: Studies of Temporal Agency

(2020) Berghahn Books

Michael G. Flaherty (Eckerd College and University of South Florida)

Lotte Meinert (Aarhus University, Denmark)

Anne Line Dalsgård (Aarhus University, Denmark)

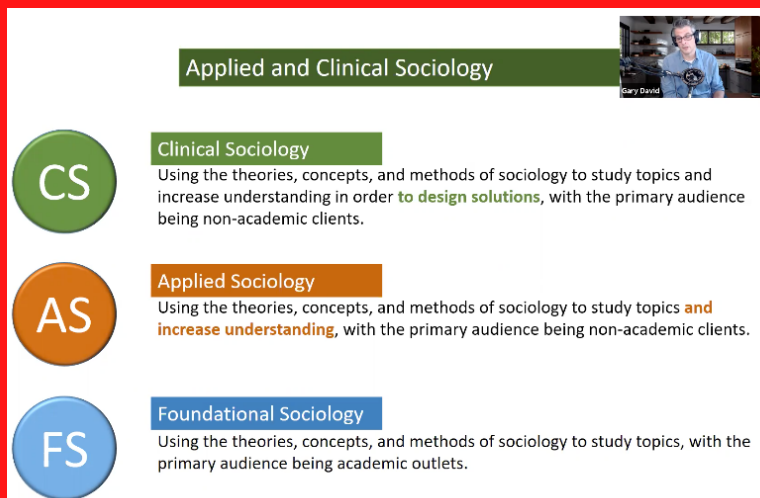
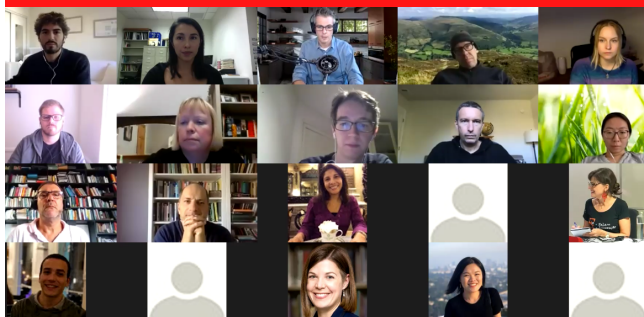


Examining how people alter or customize various dimensions of their temporal experience, this volume reveals how we resist external sources of temporal constraint or structure. Is the theory of time work applicable to people across different societies and cultural arrangements? This book is an edited collection of ethnographic studies by anthropologists and sociologists. Their vivid and insightful research is international in scope, including Argentina, Brazil, Canada, Denmark, Egypt, Georgia, Kyrgyzstan, Niger, Russia, Uganda, and the United States.

Recap of our Fall Webinar with Professor Gary David

Thank you to all those who attended our first webinar of the academic year, "Translating EMCA Work to Non-EMCA/Non-academic Audiences."

Building on his ample expertise as a trained ethnomethodologist, an educator, researcher, and consultant, certified clinical sociologist and Professor Gary David (Bentley University) offered a series of lessons to think about our research as a tool to design solutions. "We see things, that's what we do!", he reminded us. "So, don't sell yourself short in having that ability to see, turning the passive act of looking into the active act of seeing." Doing EM/CA research after all means making visible the work that sustains social life as we know it.



Applied and Clinical Sociology

- CS Clinical Sociology**
Using the theories, concepts, and methods of sociology to study topics and increase understanding in order to **design solutions**, with the primary audience being non-academic clients.
- AS Applied Sociology**
Using the theories, concepts, and methods of sociology to study topics **and increase understanding**, with the primary audience being non-academic clients.
- FS Foundational Sociology**
Using the theories, concepts, and methods of sociology to study topics, with the primary audience being academic outlets.

The conversation quickly moved to a discussion about the use of new technologies to make our research accessible. Because translating your work does not only mean putting it into simpler words but using images, video, and other media to engage others with what you do. From Brazil to Finland, we were happy to see friends and colleagues from across the world and the US join the webinar.

We plan to hold webinars three times a year in an effort to create more spaces beyond the ASA annual meeting for section members to interact with each other and discuss "the making of" research. Although all members are welcome to attend, the webinars specifically target student members as well as graduate and professional students. Earlier in the fall, we circulated a survey to gather potential topics for the webinars this year. Among the top of the list were issues of communication across academic borders, getting research funds, and professionalization. We are doing our best to combine these into the webinars. Please don't hesitate to reach out to our newsletter editors, Luisa and Kristella, who are also coordinating the webinars, if you have any ideas or feedback.

Join us for our Winter Webinar!

Join us **February 23, 2021 (Tuesday) at 10 AM (PST)** for a webinar on "EMCA approaches to Studying Violence" hosted by Jay Meehan (Oakland University) and featuring Geoff Raymond (UC Santa Barbara), Patrick Watson (Wilfrid Laurier), and Kevin Whitehead (UC-Santa Barbara). Panel members will discuss using video analysis to study police encounters, the use of video evidence in police-involved shootings and violence more broadly. We will be sending more information as we move closer to the event's date.

Call for Papers

The Editors of **Ethnographic Studies** would like to announce a call for papers for Issue 18, to be published October 2021.

The theme of the issue will be "Respecifying Education." Ethnomethodology has a long connection with both formal and informal settings of education and learning contexts. However, it is often neglected where there is a propensity to focus on theory-driven studies of education, or where there is a perceived need to employ a theory of learning as a premise for studies. We therefore welcome papers on any aspect of education, learning, or instruction (including instructed action) in any context, be this within or outside of formal educational settings. Papers should use ethnomethodological techniques or discuss ethnomethodological contributions on this broad theme. They can be data-driven research papers, conceptual discussions, or more programmatic pieces. Interested authors should send an abstract to editorial@ethnographicstudies.org by January 3rd 2021.

CALL FOR 2021 EMCA SECTION AWARDS

The EMCA section is requesting nominations for the following awards to be given at the 2021 ASA Annual meeting in Chicago.

Garfinkel-Sacks Award for Distinguished Scholarship

This award recognizes those who have made distinguished lifetime career contributions to the fields of ethnomethodology and/or conversation analysis. To nominate an individual for this award, please submit the following: 1) A letter detailing the nominee's contributions to EMCA; 2) Relevant supporting materials, including a list of the nominee's publications; and 3) At least two additional external letters speaking to the person's contributions and impact on the field(s). Please send nominations to Virginia Gill (Chair) (vtgill@ilstu.edu) by March 1, 2021.

EMCA Distinguished Book Award

This award recognizes an outstanding publication contributing to ethnomethodology and/or conversation analysis. The 2021 award will be given to a book. Eligible books for the 2021 award must be published between September 1, 2018 and February 28, 2021, inclusively. Authors can submit their own publications, or nominations can be made on their behalf. Committee members may also make their own nominations. Nominations should include: 1) full bibliographic information on the nominated book; and 2) a PDF copy (preferable) or a hard copy of the book; or a link to a website where the book can be downloaded in full at no charge. Please send nominations to Kevin Whitehead (Chair) (kwhitehead@soc.ucsb.edu) by March 1, 2021.

EMCA Graduate Student Paper Award

This award recognizes an outstanding publication contributing to ethnomethodology and/or conversation analysis. The 2021 award will be given to a paper. Eligible papers for the 2021 award must be published between September 1, 2018 and February 28, 2021, inclusively. Authors can submit their own publications, or nominations can be made on their behalf. Committee members may also make their own nominations. Please send nominations to David Gibson (Chair) (dgibson1@nd.edu) by March 1, 2021.

For a list of previous award winners, [click here!](#)

Faculty Spotlight: Dr. Christina Papadimitriou (Oakland University)

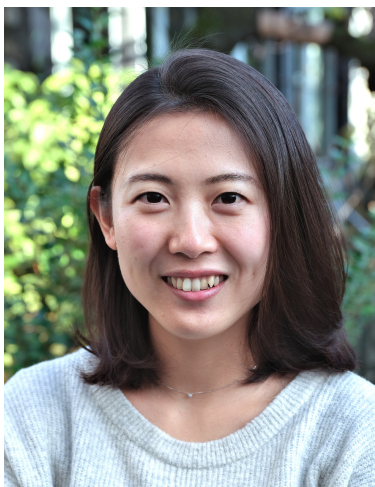
Greetings to EMCA colleagues across the globe! I am a graduate of Boston University's (BU) sociology department, where I studied with George Psathas and Jeff Coulter in the '90s. My areas of interest have been the intersections of phenomenology, ethnography and CA especially as they may intersect in topics of health and disability. Like many of you, I studied Garfinkel, Sacks, and Wittgenstein, as well as Goffman, Dorothy Smith, and Schutz. I also studied with Erazim Kohak and Victor Kestenbaum at BU's philosophy department. They trained me in the phenomenology of Husserl, Heidegger, and Merleau-Ponty. I listened to Howard Zinn talk when I organized against the first Iraqi war. I am currently an associate professor at Oakland University (in Rochester, Michigan) with a primary appointment in the School of Health Sciences.



I understand myself as a phenomenologically-informed sociologist. My current work centers on understanding the experience of disability as a form of human diversity. I belong in multiple research teams that design interventions in collaboration with end-users work to improve health and healthcare equity for persons with disabilities. You can follow my research progress on my website www.ChristinaPapadimitriouPhD.com and on Twitter @xristinapapaphd. I am often the "qualitative research expert" in diverse healthcare teams. I have noticed that my expertise is no longer seen as 'soft science' as was the case when I first started my career.

A few years ago, I met Doug Maynard in person when he gave a graduate seminar. Though I was familiar with his scholarship, his presentation using CA in unpacking autism assessments inspired a new line of study for me. With Jay Meehan, I am now engaged in studying clinical assessments for persons in disordered states of consciousness using CA and ethnographic approaches. It is beautiful to re-engage with my past training to forge a future with colleagues who share similar passions.

Student Spotlight: Mizuki Koda (University of Basel, Switzerland)



I am a first-year doctoral student, funded by a grant from the doctoral school of linguistics (HPSL). When I was doing my MA program in Pragmatics, I met researchers dealing with video recordings of social interaction. Inspired by them, I made my first recordings, video-taping my friends talking. I was fascinated by the fluidity of conversation. In particular, I was struck by how they ended their talk. It was very gradual, and there were no goodbyes or any comments about ending the conversation. However, their bodies seemed to be coordinating and negotiating to bring the conversation to an end. My MA thesis focused on embodied conducts used as resources for projecting the transition between activities. Since I had had little experience in EMCA, I started to take courses by Professor Aug Nishizaka at Chiba University, Japan. He is the one who taught me a great deal of EMCA.

I came to Basel to advance my research in multimodal CA. Professor Lorenza Mondada has been supervising me. Focusing on the multimodal and spatial arrangements of participants at dinner conversations, I am investigating how they are involved in the transformation of complex participation frameworks. My current interest is in the way in which participants in schismed conversations engage in/disengage from another ongoing conversation by paying attention to relevant details of linguistic and embodied behaviors. I am also contributing to the project "Human Sociality in the Age of Covid-19" (PI: Lorenza Mondada, <https://www.lorenzamondada.net/humansociality-covid19>). Although the pandemic has been making my daily life difficult, it has been a valuable experience to advance my research here in Basel.