



Student Forum

Student Sociologist

Volume 11, Issue 2

July-August 2018

Inside this issue:

Student Forum Sessions at the Annual Meeting	2
Employment Fair at the Annual Meeting	2
ASA Election Results	4
More about the Current SFAB	6
Teaching Resources	10
Announcing Cohort 45 of MFP	11
Job Opportunities	12
Local Arrangements	15

Editor's Column

Rebekah Smith, Minority and Student Affairs Program Assistant

Hello Students!

August is finally here, and preparations for the 113th ASA Annual Meeting are well underway. We are excited to announce the events, workshops, and sessions that the Student Forum Advisory Board (SFAB) has worked diligently to organize for this year's meeting in Philadelphia. The Student Forum is sponsoring two workshops, two paper sessions, a roundtable session and the Professional Development Certificate Program at the 2018 ASA Annual Meeting. Read more about the events in the pages below.

Outside of Annual Meeting activities, ASA is thrilled to recognize the 2018 ASA Student Forum election winners and the 45th Cohort of the Minority Fellowship Program (MFP). And as members rotate on and off the SFAB, we want to ensure that you are able to connect with them beyond ASA. Take a look at their short bios to learn about their research and career interests.

For those joining us in Philadelphia, you can use the Annual Meeting mobile app before and during the meeting. The app has maps and floor plans of the meeting spaces, complete meeting program listings, interactive exhibitors map, and messenger capabilities with other attendees. You can access information on how to download the app from the Apple App Store, Google Play, and other devices via this [this link](#).

Finally, Philadelphia is not only a city of sociological importance but a place that is full of art, history, and culture. SFAB's own Karen Okigbo, a Philadelphia native, has organized the Local Arrangements that are included in the final pages of this newsletter. Check it out!

As always, we appreciate your participation in the Student Forum. If you would like to submit content to the newsletter or have information that may be useful for other students such as job, funding, or professional development opportunities, please send that content to studentforum@asanet.org so that we can spread the word.

We hope you enjoy this issue of the Student Sociologist. Enjoy the rest of your summer.

See you in Philly!

—Rebekah

Student Forum Sessions

We especially invite you to the **Student Forum Business Meeting** on Saturday, August 11th at 2:30 PM, in Level 5, Salon I in the Philadelphia Marriott Downtown. The Business Meeting is an open forum where students can come inquire about joining SFAB, the roles and responsibilities that come with joining, the resources we have available, and more broadly, share your thoughts on how we can improve the student experience at ASA.

Student Forum Sponsored Sessions:

1177 - Health and Belonging among College Students Paper Session
Sat, August 11, 8:30 to 10:10am, Philadelphia Marriott Downtown, Level 4, Franklin Hall 13

1485 - Student Forum Business Meeting
Sat, August 11, 2:30 to 4:10pm, Philadelphia Marriott Downtown, Level 5, Salon I

1622 - Student Reception (No RSVP or payment required)
Sat, August 11, 6:30 to 7:30pm, Pennsylvania Convention Center, Level 100, 113A

2237 - Student Forum Advisory Board
Sun, August 12, 10:30am to 12:10pm, Philadelphia Marriott Downtown, Level 3, 302

2365 - Social Movements and Resistance: From Individuals to Organizations
Sun, August 12, 12:30 to 2:10pm, Philadelphia Marriott Downtown, Level 4, Franklin Hall 1

3118 - Publishing Your Work 101
Mon, August 13, 8:30 to 10:10am, Pennsylvania Convention Center, Level 100, 111A

4357 - Emotional Labor and Mental Health
Tue, August 14, 12:30 to 2:10pm, Philadelphia Marriott Downtown, Level 4, 412

Other Sessions from Members of the Student Forum

Graduate Student Workshop on Collective Organizing

Mon, August 13, 10:30am to 12:10pm, Pennsylvania Convention Center, Level 100, 111A

Organizers: Shannon Malone-Gonzalez (UT Austin), Jamie O'Quinn (UT Austin), Katie Rogers (UT Austin), Erika Slaymaker (UT Austin), and Jax Gonzalez (CU Boulder)

"In light of major political shifts inside and outside the academy, sociology graduate students are increasingly invested in social justice and change. Students are leveraging their degrees, pressuring their departments, and thinking critically about the state of public sociology within the discipline. This workshop is a collaboration of graduate students from across the discipline in an effort to coalesce ideas and efforts on graduate activism. The objectives of this workshop will be to construct a toolkit of resources for student activism, create a network for sharing ideas between departments, and develop a public statement on sociology student activism. This workshop, designed for graduate students and allies of graduate students, is an inclusive and explicitly feminist, anti-racist, and queer space for students to collaborate and build a framework for collective action."

Employment Fair

Any registrant, whether currently on the job market or a future candidate, is invited to attend the Employment Fair. There is no fee beyond [meeting registration](#) to gain entrance to the Employment Fair. Your meeting badge will be required to enter the hall.

When: Saturday, August 11; 11:00 a.m. - 4:00 p.m.

Where: Philadelphia Convention Center

The informal environment of the Fair is designed to be flexible to fit with your meeting schedule. The open Fair on Saturday offers the opportunity to meet with employers and discover more about their institutions, as well as positions currently available or future employment opportunities.

Sunday, Monday, and Tuesday, August 12-14, are reserved for employer scheduled interviews. In order to increase your chances of receiving an interview, job seekers should contact those employers participating in the Employment Fair with whom they would wish to meet prior to arriving in Philadelphia. While this will not guarantee an interview, it will indicate your interest to the employer and increase your chances of receiving an interview. Please see the current list of [2018 Employment Fair employers](#) for more information.

ASA members and [Job Bank](#) subscribers are highly encouraged to indicate on their **Job Bank Resume Listing** that they will be attending the Annual Meeting in Philadelphia. This will allow employers with an active listing on the ASA Job Bank to view your resume listing prior to the meeting. While this will not guarantee an interview, it will make you more visible to employers. This option will be available on the Job Bank May 1-August 18, 2018.

Professional Development Certificate

ASA Student Forum is pleased to offer a Professional Development Certificate for its members, based on attendance (proof by signature of the session organizer/leader/presider) at SIX (6) sessions, meetings, or workshops. **Students can choose to either attend SIX (6) from the list provide here or attend FIVE (5) from the list and include ONE (1) session that the student is presenting in.** The Student Forum Advisory Board (SFAB) worked closely with the ASA Executive Office to provide a list of sessions that fall under the theme of professional development for sociology students. While the list is obviously not exhaustive of ALL of the possibilities in the Annual Meeting program, great effort was made to be representative both content-wise and time slot-wise. After obtaining all Six (6) signatures, please scan the completed form and email to studentforum@asanet.org or mail it after the Annual Meeting to: Rebekah Smith, ASA Student Affairs Program Assistant, 1430 K Street NW #600, Washington, DC 20005.

[Click here for the certificate worksheet.](#) Another PDF version of the form will be sent to Student Forum Listserv days before the Annual Meeting.

Once verified by SFAB, please note that a PDF of the Student Forum Professional Development Certificate will be sent to you by email.

2018 ASA Election Results

ASA is pleased to announce the results of the 2018 ASA election. Thank you to all the candidates who generously volunteered their service, and congratulations to the new members of our leadership team.

For the full results, see [click here](#).



President-Elect

Christine Williams, University of Texas-Austin
One-year term as President-Elect, one-year term as President, and one-year term as Past President



Vice President-Elect

Joya Misra, University of Massachusetts-Amherst
One-year term as Vice President-Elect, one-year term as Vice President, and one-year term as Past Vice President



Secretary-Elect

Nancy López, University of New Mexico
One-year term as Secretary-Elect, three-year term as Secretary

Election Results continued

Student Forum

Graduate Student Members, two-year terms



Marie Plaisime, Howard University



Apoorva Ghosh, University of California-Irvine



Endia Hayes, Rutgers University



Saugher Nojan, University of California-Santa Cruz

Undergraduate Student Member, one-year term



Elena van Stee, Calvin College

Each graduate student representative's term begins September 1, 2018 and runs through August 31, 2020, and the undergraduate student representative's term is from September 1, 2018 through August 31, 2019.

The next issue of the *Student Sociologist* will feature a personal message from the newest members of the Student Forum Advisory Board.

About the Current 2017-18 SFAB

As the Annual Meeting approaches and some members rotate off the Board on August 31, SFAB would like to leave you with a better idea of who they are and how their lives fit into the world of sociology. Take a minute to read their bios. Feel free to contact them if you have any questions about the Student Forum, their roles as representatives, research, etc.

Kaitlin Johnson

I am a doctoral student at Indiana University and this is my first year serving on the Student Forum Advisory Board. Before coming to IU, I earned my BS in sociology at the University of Texas at Arlington and my MA in sociology at Purdue University. My research focuses on gender inequality in labor markets using quantitative methods. I am particularly interested in occupational sex segregation from a supply-side perspective. That is, why do women and men choose gender-appropriate career paths?

At this year's ASA Annual Meeting I am presenting findings from a study I recently completed at a paper session hosted by the Section on Sociology of Sex and Gender. This article examines why women concentrate in occupations with the least access to "family friendly" resources despite evidence that suggests women prefer these policies to men and actively seek them out when making employment decisions. I use data from the American Time Use Survey to show that feminized jobs are much less likely to have family friendly resources such as schedule flexibility. Then, using an experiment I show that women misperceive jobs with feminine traits as being much more likely to have family friendly resources compared to other types of jobs. Taken together, the results suggest that false notions of feminized work as family friendly contribute to women's concentration in low wage occupations with few opportunities for upward mobility. I plan to further explore how women and men make decisions regarding employment when I begin my dissertation this year. In addition to my substantive work, I am also earning a MS in statistics and help teach quantitative methods courses at IU.

Ellen Whitehead

My name is Ellen Whitehead, and I am a Ph.D. Candidate in the sociology department at Rice University. I currently serves on the Workshop and Awards Committees of the Student Forum Advisory Board, and I am looking forward to being involved another year! One of my favorite parts of being involved in SFAB this past year was helping to organize the Student Forum paper and roundtable sessions for this year's ASA in Philadelphia. It was exciting to see all of the amazing research being done by graduate students who are participating in this year's annual meeting!

My research centers around social stratification, family, race and ethnicity, and urban sociology. I am affiliated with Rice University's Kinder Institute for Urban Research, the Racism and Racial Experiences Workgroup, and the Population Health Lab, and was previously a Visiting Graduate Student Scholar at the UC Davis Center for Poverty Research. In particular, my work focuses on resource transfers between adult family members—such as the sharing of housing, money, or childcare support—and how these contribute to economic and well-being outcomes among individuals. In other words, how do family members help each other out? And how well does this help individuals make ends meet? My dissertation explores the long-term trajectories of individuals who receive help from family. By doing this, I hope to help unpack the extent to which the family operates as a mechanism of inequality and the role families play in perpetuating advantage/disadvantage over time. If you are interested in learning more about my work, some of my research on access to and impacts of familial support was recently published in the *Journal of Family Issues* and *Journal*

About the Current SFAB

of Marriage and Family. If you would like to chat about SFAB, research, or anything else regarding academic life, reach out through email (ellen.m.whitehead@rice.edu) or Twitter ([@EllenMWhitehead](https://twitter.com/EllenMWhitehead)). The SFAB team is always looking for ways to help improve the ASA experience for students, so feel free to say hi in Philadelphia this August!

Wendy Laybourn

My research centers on the relationship between racial ideology and identity formation and the challenges and possibilities people have in reshaping racial meanings. In order to examine these questions, I investigate family, online and in-person support groups, and social organizations, such as fraternities and sororities, paying particular attention to structured cross-racial interaction. For example, in my dissertation research on transnational transracial adoptees, entitled "Beyond Honorary Whiteness: Ideologies of Belonging and Korean Adoptee Identities," I examine the relationship between ideologies of race, family, and national belonging and Korean adoptees' racial, ethnic, and adoptee identity formation. In order to do so, I take a mixed methods approach, including an online survey (N=107), in-depth interviews (N=37), and ethnographic observation across the U.S. and in Korea at adoptee events, conferences, and adoptee-related activism (18 months). My examination of Korean adoptees' distinct racial, ethnic, and adoptee identities, entitled "Korean adoptee identity formation," is published in *Sociology Compass* (2017).

This spring I received my PhD from the University of Maryland and have accepted a tenure-track position at the University of Memphis. As a Memphis alumna (B.A., Sociology, '05), I look forward to giving back to the community that first ignited my interest in sociology. Unfortunately this means that I will no longer be able to serve on the Student Forum Advisory Board, however I hope you will join me at ASA for a panel entitled, "Publishing Your Work 101."

Karen Okigbo

I am a doctoral candidate in the Sociology program at the CUNY Graduate Center. Prior to matriculating at the Graduate Center, I earned my Bachelors in Politics from Princeton University, and hold Masters degrees in Sociology from North Dakota State University and Social Policy from the University of Pennsylvania. I am a recipient of the Andrew W. Mellon Teaching Fellowship and teach in the Sociology department at City College of New York. As part of this fellowship, I am working to bridge the gap between curriculum and professional development in undergraduate education by introducing students to young professionals of diverse backgrounds with myriad professional trajectories. Over the past three years, I have taught a number of courses including Sociological Theory, Social Class, Immigration and the Second Generation, and Sociology of Gender.

In addition, to my teaching experience, I also serve as a Senior Quantitative Research Associate at CUNY's Center for Latin American, Caribbean & Latino Studies (CLACLS). In this role, I contribute to the ongoing Latino Data Project, an initiative that conducts demographic and quantitative research on the Latino population of the United States, New York City, and the metropolitan region. This research largely utilizes microdata files produced by the U.S. Census Bureau and other government agencies. I am also deeply interested in program evaluation; as such, I am a Research Fellow at the Office of Research, Evaluation & Program Support (REPS), where I currently lead the evaluation of the Creative Arts Team's Early Learning Program (CAT-ELP), an initiative that aims to improve teacher pedagogy and student literacy outcomes in select primary schools. Broadly speaking, my interests lie in the intersection of the following sub-fields: immigration, race and ethnicity, family, and education. My dissertation research ex-

About the Current SFAB

plores the assimilation experiences of African immigrants in the United States. Using a mixed-method investigation, I explore the burgeoning narrative of Nigerian immigrants as the new model minority, by studying the experiences of young adults transitioning through emerging adulthood. I am interested in exploring the degree to which second generation Nigerian immigrants reject their ethnic heritage or resist Americanization, how they navigate the process of finding love, and the role of parenting and intrafamily dynamics on this process.

Joseph van der Naald

I am a PhD student at The Graduate Center, CUNY. My research focuses on economic, political, and labor sociology, and my interests generally center around the political economy of the American welfare state. I am also a teaching assistant and lecturer, with appointments at Brooklyn College and Queens College. Additionally, I am a research analyst at the Joseph S. Murphy Institute for Worker Education and Labor Studies and the National Center for the Study of Collective Bargaining in Higher Education and the Professions at Hunter College, as well as the newsletter editor for the Labor and Labor Movements section of ASA.

I am involved presently in two main research projects. First, I am using spatial demographic methods to study relationship between the expansion of the logistics sector in the United States economy, the reliance of American workers on forms of social assistance, and rates of poverty. The growth of warehousing employment is often regarded by politicians as a source of good-paying, jobs especially in deindustrialized communities. Yet, not all logistics industries are made equal, as some pay lower than average wages for the sector and even contribute to underemployment. In research conducted in the spring of 2018, I measured the statistical incidence of poverty in two midwestern states alongside the growth of warehouse employment over a fifteen year time period and found that despite a significant growth in jobs, this growth had no effect on rates of poverty. My second project is more historical in nature, as I am tracing the American labor movement's relationship toward varieties of basic income proposals in the United States. I recently conducted archival research examining the role of organized labor in the history of income security policy in the United States, with a particular focus on struggles for a guaranteed annual wage by United Automobile Workers organizers.

Uriel Serrano

¡Saludos! My name is Uriel Serrano, and I am doctoral student in the Sociology Department at the University of California, Santa Cruz. I am from the Crenshaw/Baldwin Hills neighborhood in South Los Angeles, with roots in Durango, Mexico. I am entering the third year of my doctoral program this next academic year and currently in the process of advancing to candidacy. For the past four years, I have served on the ASA Student Forum Advisory Board in various capacities—including past chair and session organizer—and will be transitioning to my new role as graduate student representative for the ASA Latina/o Sociology Section.

I am a sociologist of race, gender, youth, and education with a broad interest in youth organizing and the experiences of Black and Latinx youth in secondary and post-secondary education. Informed by theories of intersectionality and civic engagement, my dissertation explores the organizational, cultural, and healing informed programming in community based youth organizations in South Los Angeles and how they foster the well-being of Black and Latino youth. I also focus on how youth organizing, and the programming in these community based youth organizations, shapes the racial identity and masculinities of Black and Latino young men. As a 2018-2019 Social Science Research Council Dissertation Proposal Development Fellow, this summer I will be conducting participant observations and semi-structured

About the Current SFAB

interviews to begin to examine the varying organizational practices of 4 youth organizations in South Los Angeles. Drawing from two years of participant observations, survey data collected from 640 boys and young men, and numerous interviews, I have co-authored various reports published by the USC Program for Environmental and Regional Equity (PERE). In my most recent report, "A Beloved Community: Promoting the Healing, Well-being, and Leadership Capacities of Boys and Young Men of Color," Professor Veronica Terriquez and I highlight how community-based youth organizations, along with statewide and regional youth development opportunities, expand the civic capacities of boys and young men of color in California, increase their capacity for civic action, offer them a critical civics education, and support their personal growth. I am happy to connect via email (serrano@ucsc.edu) or you can find me on twitter ([its_Serrano](https://twitter.com/its_Serrano)). Enjoy ASA, take breaks, and make sure to explore Philly!

Elizabeth Anderson

My name is Elizabeth Anderson, and I had the pleasure of serving as the undergraduate representative on the Student Forum Advisory Board for the 2017-2018 term! I graduated from Wake Forest University in May of 2018, and I will be starting my doctorate in sociology at Indiana University, Bloomington this fall. In this edition of the Student Sociologist, we are highlighting research being conducted by members of the board.

My latest research investigates how the socioeconomic status of parents affects a young adult's risk of contracting a sexually transmitted infection (STI) in early adulthood. Aligning with primary sociological concerns like social differentiation and social networks, the social factors the influence the rate of STIs contributes to the core vision of sociology. To answer this question, I expanded upon previous work that utilized the National Longitudinal Study of Adolescent of Adult Health Waves I - III by using the Public Use In-Home Data Wave IV. Wave I was collected from a nationally representative sample of adolescents in grades 7-12 in 1994 and 1995. Wave IV was collected in 2008 when the respondents were between 24 and 32 years old. I created logistic regression models to study the role of ascribed characteristics, sex behavior and sexual health education on STI rates. The results of my analysis led me to reject my hypothesis that parental income was a significant predictor of STI rates and, instead, revealed the significance of interlocking systems of inequality, such as sex and race. Along with previous qualitative and quantitative work on STIs, my research illustrates the importance of challenging unequal social structures to make meaningful strides towards reducing rates of STIs. The realities of STI rates calls for larger-scale changes, rather than just increasing public awareness, through means of reducing mass-incarceration in Black communities, confronting the social norms that silence women from demanding contraceptives of their choice, and increasing access/decreasing the stigma associated with the female condom.

Kati Barahona-Lopez

I am a Ph.D. Candidate in the department of Sociology at the University of California, Santa Cruz. My dissertation work is a mixed-methods study of Central American Unaccompanied Minors living in San Francisco, CA. My dissertation titled: "*The Deportability Enforcement System: Disciplining Central American Unaccompanied Minors Outside of Detention Centers*", provides vital information about the changing nature of immigrant enforcement and the United States deportation system. This interdisciplinary project draws from literature on assimilation, integration, legal studies, immigration enforcement, deportability, and "crimmigration." I am the recipient of a number of grants and awards including the Lionel Cantú Memorial Award, the 2017 Chancellor's Dissertation Year Award, and the 2017 Chicago Ethnography Incubator Graduate Student Fellowship.

Sociology Teaching Resources

By: Maria D. Duenas

As graduate students, we may be teaching or working as teaching assistants for the first time. It can be intimidating to have to prepare content each week on top of keeping up with our writing, research, coursework, etc. I compiled a list of resources that can help you more efficiently prepare for teaching your classes or discussion sections. While not an exhaustive list, the following resources are ones that have been helpful to me.

ASA TRAILS

ASA Teaching Resources and Innovations Library for Sociology (TRAILS) is a resource available to all members of ASA. It is a peer-reviewed library that contains class activities, assignments, and syllabi. **Link:** <http://trails.asanet.org/Pages/default.aspx>

Sociological Cinema

Sociological Cinema is another library focused on video clips that can be used during classes. The website is available free of charge. You can also submit videos to the library, which are peer edited before they are published. The sources at the Sociological Cinema have been helpful to me by providing visual examples to demonstrate course concepts. I have found that a visual example helps students understand sociological concepts, develop critical thinking skills by analyzing visual media, and apply sociological concepts to their everyday lives. **Link:** <https://www.thesociologicalcinema.com>

Supplemental resources from textbooks

The textbook that you or your instructor of record selected to use typically have supplemental materials. These supplemental materials can include PowerPoints, exam questions, and ideas for course activities. You can contact the publisher for these resources.

Colleagues

Sharing teaching materials such as class activities, syllabi, and videos is common amongst colleagues. Reach out to other TAs and professors for ideas or specific materials they used. I have personally benefited tremendously from course materials created by senior instructors who generously shared their syllabi and activities with me. I frequently adapt course materials I received from other instructors to better reflect my own teaching style and the course topic, class size, and student level. You can easily bring in your own creativity and ideas to the materials you borrow from others.

Teaching Sociology

Teaching Sociology is sociology's top teaching journal. You can find peer-reviewed articles on the scholarship of teaching and learning in sociology. For example, one of my favorite articles is Dr. Chavella Pittman's piece titled "Race and Gender Oppression in the Classroom: The Experiences of Women Faculty of Color with White Male Students." She sheds light on the gendered racism that women of color face from white male students in the classroom. This article, like many others, may help you feel like you are not alone with teaching challenges that you may face as a graduate student. You can also submit articles to this journal. **Link:** <http://journals.sagepub.com/home/tso>

Your university's teaching center

It is increasingly common for universities to have their own teaching center dedicated to providing workshops on teaching and pedagogy for faculty and graduate students. If your school does not have a teaching center, research other teaching centers across the country to see if they made their workshop PowerPoints or other teaching resources available online. The Center for Research on Learning and Teaching at the University of Michigan has great online resources: <http://www.crlt.umich.edu/>

Minority Fellowship Program Cohort 45

MFP ANNOUNCES COHORT 45 FOR THE 2018-2019 ACADEMIC YEAR

ASA is pleased to introduce the seven scholars who form Minority Fellowship Program (MFP) Cohort 45. These talented PhD candidates, with strong and diverse sociological research interests, were chosen from a large and highly competitive pool of applicants this past March.

[Click here to see their full bios in the July-August Issue of *Footnotes*.](#)

Rocío R. García

Graduate Institution: University of California-Los Angeles



Bianca Gonzalez-Sobrinó (Midwest Sociological Society MFP)

Graduate Institution: University of Connecticut



Brooklynn Hitchens (Sociologists for Women in Society MFP #1)

Graduate Institution: Rutgers University-New Brunswick



May Lin

Graduate Institution: University of Southern California



Katherine Maldonado (Sociologists for Women in Society MFP #2)

Graduate Institution: University of California-Riverside



Corey Miles (Association for Black Sociologists MFP)

Graduate Institution: Virginia Tech



Kelly Marie Ward (Alpha Kappa Delta MFP)

Graduate Institution: University of California-Irvine



Job Opportunities

Below are some featured postings from ASA Job Bank. Please be sure to visit the Job Bank!

California State Polytechnic University, Pomona
Assistant Professor in Criminology

SOCIOLOGY DEPARTMENT

The Sociology Department in the College of Letters, Arts, and Social Science at California State Polytechnic University, Pomona (Cal Poly Pomona) invites applications for a *tenure-track position in Criminology at the rank of Assistant Professor to begin Fall 2019*. While Psychology and Sociology are currently merged as a single department, Sociology will be an independent department when this position begins in Fall 2019. Candidates should be comfortable with teaching criminology courses required for the Sociology/Criminology major.

At Cal Poly Pomona we cultivate success through a diverse culture of experiential learning, discovery, and innovation. As a teaching university, we demonstrate academic quality, relevance, and excellence through our teaching, learning, scholarship, and creative activities with student centered faculty in an evidence-based culture. Cal Poly Pomona is committed to being the model for an inclusive polytechnic university that inspires creativity and innovation, embraces local and global challenges, and transforms lives.

The Position: The faculty member will teach undergraduate classes in Criminology and Research Methods. The position requires excellence in teaching and advising, professional and scholarly achievements, and a commitment to service to the department, university, and community. The successful candidate will demonstrate sensitivity to issues of diversity, including race, ethnicity, gender, class, age, religion, and sexuality. Applicants whose work incorporates a global perspective and a commitment to diversity in higher education are particularly encouraged to apply. Candidates are strongly urged to familiarize themselves with our programs, department, university and mission at: <https://www.cpp.edu/~aboutcpp/calpolypomona-overview/mission-and-values.shtml>.

To apply online: please submit applications via Interfolio at <http://apply.interfolio.com/52311>. Applicants will provide contact information for recommenders during the application process and the system will contact recommenders and provide a method for uploading letters.

Please address all inquiries to:

Faculty Search Committee
c/o Dr. Jack Fong
Professor of Sociology
Sociology Department
California State Polytechnic University, Pomona
Pomona, CA 91768

Phone: 909-869-5466
Email: jackfong@cpp.edu

Georgia Tech School of History and Sociology

Ivan Allen College of Liberal Arts

The School of History and Sociology at Georgia Institute of Technology invites applications for a faculty position at the rank of assistant or associate professor. We are especially interested in applications in sociology of technology or sociology of science, with a preference for sociology of technology. Candidates whose work includes areas outside the United States are encouraged to apply.

The position will begin in August 2019.

The successful candidate must have a Ph.D. completed by the time of appointment and an established research trajectory that fits with the mission of the school. Faculty rank will be commensurate with experience and accomplishments. The successful candidate must demonstrate excellence in both research and teaching and will be expected to contribute to the school's undergraduate and graduate programs.

Review of applications will begin September 14 and will continue until the position is filled. Application materials should be sent electronically. Please submit a letter of application, a curriculum vita, writing samples, and three letters of reference through <https://academicjobsonline.org/ajo/jobs/11427>. Members of the search committee will be at the ASA meeting in Philadelphia and available to meet with individuals interested in the position through the ASA employment service.

The School of History and Sociology (HSOC) is a department within the Ivan Allen College of Liberal Arts (IAC), and serves as the primary home for the disciplines of history and sociology at the Georgia Institute of Technology (Georgia Tech). HSOC is committed to outstanding teaching and research. Research areas in HSOC include science, technology, and medicine; race, inequality, and social justice; sports and society; cities; agriculture and the environment; politics and power. HSOC offers a B.S. degree in History, Technology and Society, as well as undergraduate minors and certificates in social justice, STS (science, technology and society), African American studies, Asian Affairs, and others. The graduate program grants M.S. and Ph.D. degrees in History and Sociology of Technology and Science. For more information about the School of History and Sociology, please visit <http://hsoc.gatech.edu>.

Georgia Tech is one of the leading research universities in the USA. It was recently ranked #7 among the best public universities in the U.S. according to *U.S. News and World Report*. Georgia Tech's beautiful 400-acre, tree-lined campus is located in the heart of Atlanta. Georgia Institute of Technology is an equal opportunity employer whose academic core mission is based on the principles of inclusion, equity, diversity, and justice. Members of historically underrepresented groups are strongly encouraged to apply.

Send inquiries to sociologysearch@hsoc.gatech.edu.

American Sociological
Association
1430 K Street NW #600
Washington, DC 20005

Phone: 202-383-9005
Fax: 202-638-0882

Email:
studentforum@asanet.org

Visit our website
asanet.org

Content Submissions

We want to hear from you!

In our ongoing effort to increase student involvement, members of the Student Forum Advisory Board are happy to announce that the Student Sociologist is now soliciting **research reports** from sociology graduate and undergraduate students. Research reports are short briefs on student research activities that introduce readership to innovative student work.

Each submission should be no more than 800 words, include a title, briefly introduce the researcher, present the research question, background of the study, significance of the research, and provide some provisional findings. Reports do not need to present completed research, but can instead provide readers with information on an ongoing project. Ideally, research reports will be derived from term papers, bachelors and masters theses, or from doctoral dissertation research. Qualitative and quantitative research welcome. If including graphs or charts, please do not include more than one that can fit onto a page of the Student Sociologist with text.

Ideally, the research report will allow you to network with other students as well as give students an opportunity to craft pre-publishable materials.

Please send all materials to studentforum@asanet.org.

Don't forget to check out our Local Arrangements supplement for the upcoming 2018 ASA Annual Meeting in Philadelphia!



Organization



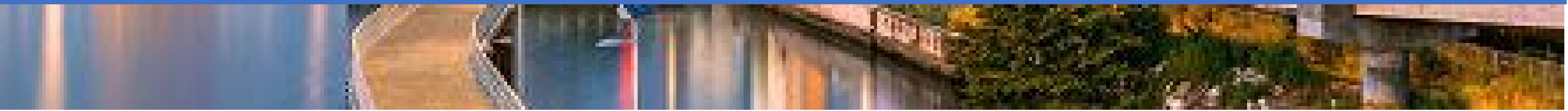
2018 American Sociological Association Annual Meeting
Student Forum Advisory Board
Local Arrangements

Philadelphia, PA | August 11 – 14, 2018





Hotels & Hostels



Hotels



Lokal Hotel | \$\$\$

staylokal.com

139 N. 3rd St., Old City | 267.702.4345

LOKAL is a boutique hotel group with a focus on 'invisible service' in and around Philadelphia. Lokal has two locations open, one of which is a six-unit hotel in historic Old City.

The Study | \$\$\$

thestudyatuniversitycity.com

20 S. 33rd St., University City | 215.387.1400

This streamlined boutique hotel is a recent addition to University City. The interiors are minimal, architectural, and comfortable and the customer service is top notch.



Roost | \$\$

myroost.com

1831 Chestnut St., Rittenhouse | 267.469.0349

ROOST Apartment Hotel provides furnished, fully equipped studio, one and two-bedroom apartments for temporary and extended stays in the heart of Philadelphia.

Warwick Hotel | \$\$

www.warwickrittenhouse.com

220 S. 17th St, Rittenhouse | 215.735.1600

A minute's walk from 15th-16th and Locust Street train station, this elegant, landmark hotel with a bold, modern lobby is a 17-minute walk from the Franklin Institute and a mile from the Liberty Bell.



Hostels



Airbnb | \$-\$\$\$

www.airbnb.com/Philadelphia

Airbnb provides nightly rentals offered by locals. When searching on Airbnb, search for rentals in Old City, Society Hill, Center City and Rittenhouse Square for walkable options to the conference.

VRBO | \$-\$\$\$

vrbo.com

Much like Airbnb, VRBO allows you to explore an array of Philadelphia rentals, including apartments, houses, and more, all bookable online. Search for the same neighborhoods for walkable options.



City House | \$

cityhousehostels.com

325 Cherry Street | 267.318.7062

City House Hostel Old City Philadelphia offers 4 bed and 6 bed mixed dorms. All bathrooms are shared. It has a fully fitted kitchen and plenty of space to get work done or kick back and watch television.

Apple Hostels | \$

applehostels.com

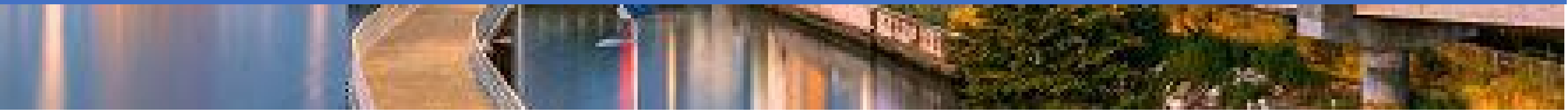
33 S Banks Street | 215.922.0222

Female, male, and coed dorm rooms are available with bunks beds; private rooms and semi-private dorm rooms are also available. Bathrooms and showers are located near the rooms.





Food & Drinks



Food

Reading Terminal Market

readingterminalmarket.org
51 N 12th Street | 215.922.2317

Reading Terminal Market is a famous indoor farmer's market offering diverse fare, housewares & area specialties since 1892. This is a definite must visit (even for a quick lunch), and is walking distance from the convention center.



Food Trucks

foodtrucksin.com
roaminghunger.com

Over 150 trucks populate the city in warmer months (generally April through mid-November), with those who drive year-round providing delicious choices from burgers and jerk chicken to donuts and ice cream.



Philly Cheesesteaks

visitphilly.com

Gino's? Pat's? Jim's? In Philly, cheesesteaks are taken very seriously. We certainly won't weigh in on the never-ending debate on the best Philly steaks, besides encouraging you to try one...or all!



Old City Eats

oldcitydistrict.org/oldcityeats

For those arriving early for the conference, the Old City District showcase their thriving dining scene with food and drink specials every **Thursday**. Peruse the list of participating venues – there is sure to be something for everyone!



Food

[Amis](#)

412 S. 13th St., Washington Square West | 215.732.2647

[Audrey Claire](#)

276 S. 20th St., Rittenhouse | 215.731.1222

[Barbuzzo](#)

110 S. 13th St., Washington Square West | 215.546.9300

[Butcher Bar](#)

2034 Chestnut St., Rittenhouse | 215.563.6328

[Double Knot](#)

120 S. 13th St., Center City | 215.631.3868

[El Vez](#)

121 S. 13th St., Washington Square West | 215.928.9800

[Fork](#)

306 Market St., Center City | 215.625.9425

[Goldie Falafel](#)

1526 Sansom St., Rittenhouse | 267.239.0777

[Harp & Crown](#)

1525 Sansom St., Rittenhouse | 215.330.2800

[High Street Market](#)

308 Market St., Old City | 215.625.0988

[Mission Taqueria](#)

1516 Sansom St., Rittenhouse | 215.383.1200

[Moshulu](#)

401 S. Columbus Blvd., Society Hill | 215.923.2500

[Pizzeria Vetri](#)

1615 Chancellor St., Rittenhouse | 215.763.3760

[Res Ipsa](#)

2218 Walnut St., Filter Square | 267.519.0329

[Rooster Soup Co.](#)

1526 Sansom St., Rittenhouse | 215.454.6939

[Talula's Garden](#)

210 W. Washington Sq., Society Hill | 215.592.7787

Drinks



Standard Tap

standardtap.com

901 N. 2nd St, Northern Liberties |
215.238.0630

Standard Tap serves some of the finest award-winning craft brews in Philadelphia. They proudly feature only locally-produced draft beers, including 2 cask-conditioned brews served from their hand pumps.

Frankford Hall

frankfordhall.me

1210 Frankford Ave, Fishtown |
215.634.3338

This German-style beer garden has ample outdoor seating in the form of picnic benches (and outdoor heaters, plus space inside, for when it's chilly), lots of German beer served in steins, and really good giant pretzels.



Parks on Tap

parksontap.com

Parks on Tap is Philadelphia's traveling beer garden that gives back! It is a partnership with [Philadelphia Parks and Recreation](#), [Fairmount Park Conservancy](#) and Avram Hornik of [FCM Hospitality](#) that brings a beer garden to various parks throughout the summer.

Center City Sips

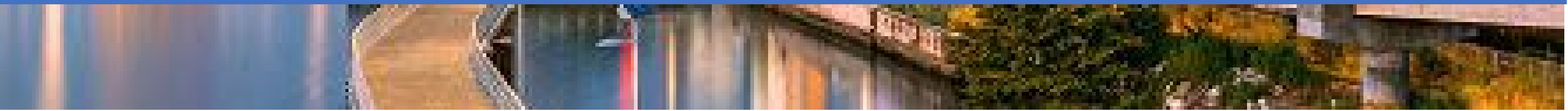
centercityphila.org

For those arriving early for the conference, the Center City District showcases their thriving dining scene with food and drink specials on **Wednesdays**.





Sights & Sounds



Sights



Boat House Row

boathouserow.org

1 Boathouse Row, West Philadelphia

When the Schuylkill Navy was founded back in 1858, each of the member rowing clubs built stunning boathouses along the river to host trainings and, of course, house their boats. Today, the Navy is active as ever, hosting regattas for every skill level.

Morris Arboretum

morrisarboretum.org

100 E. Northwestern Ave., | 215.247.5777

With its ninety-two acres of English gardens, this Victorian arboretum is a hit with kids and adults. You can stroll along the canopy walk, lie on the giant hammocks, or see the trees and gardens from a different perspective via the telescopes.



Liberty Bell

6th St. & Market St., City Center | 215.965.2305

You pretty much can't throw a stone in this part of Philadelphia without hitting something beautiful and historic. Case in point, the Liberty Bell—one of the most iconic symbols of American history.

National Constitution Center

525 Arch St., Center City | 215.409.6600

With a slew of interactive exhibits that make it a worthy destination, this essential museum delivers on its promise of educating, and offering an engaging dialogue about the Constitution.



Sights



Rittenhouse Square

18th and Walnut St., Rittenhouse

Rittenhouse Square is one of the five original city squares created by William Penn. This particular square is named after the renowned inventor and astronomer David Rittenhouse, and remains one of the most popular neighborhoods in Philadelphia.

Free Yoga at Race Street Pier

Race Street Pier, Race Street & N. Columbus

Bring your yoga mat to the waterfront for [free yoga classes](#) (weather permitting). Classes run from 7 a.m. to 8 a.m. Monday through Friday, 6 p.m. to 7 p.m. Monday through Thursday (yes, there are two classes Monday through Thursday!) and 9:30 a.m. to 10:30 a.m. on Saturday and Sunday.



Philadelphia Museum of Art

2600 Benjamin Franklin Pkwy. | 215.763.8100

Yes, those stairs probably look familiar. They are the Rocky steps, which means you can have your very own running moment and recreate the climactic scene from the movie. The Philadelphia Museum of Art is the third largest art museum in the country.

Rodin Museum

*2151 Benjamin Franklin Parkway/
215.763.8100*

Located along the Benjamin Franklin Parkway, the Rodin Museum is a walk away from the [Philadelphia Museum of Art](#) and the [Barnes Foundation](#), thus making for a perfect, leisure, art-filled afternoon.





We hope you enjoy exploring Philadelphia!

See visitphilly.com for more information on the City of Brotherly Love.

