

THE AMERICAN SOCIOLOGICAL SOCIETY

Institute of Mathematical Statistics, E. G. Olds, Carnegie Institute of Technology.
 Rural Sociological Society, Robert A. Polson, Cornell University.
 Tax Institute, Mabel L. Walker, Philadelphia, Pennsylvania.
 American Finance Association, Louis J. Long, Allegheny College.

NOTE

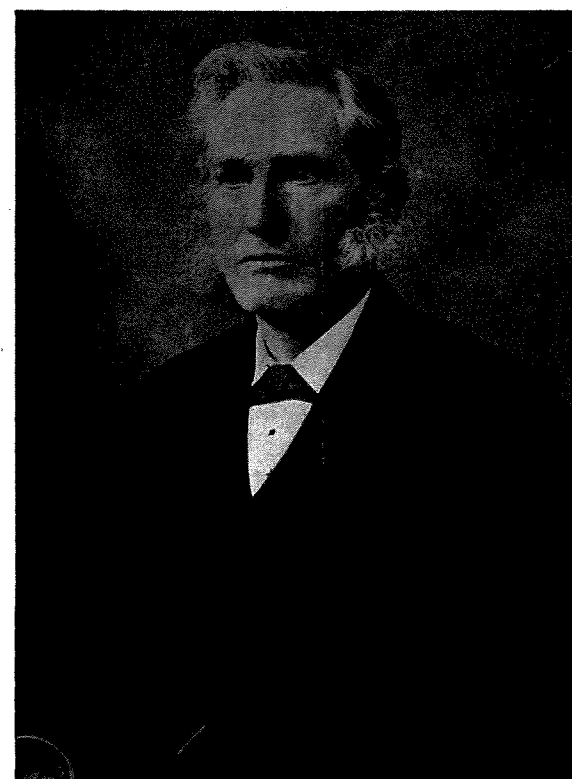
The picture of L. F. Ward which appears on the cover of this program was obtained through the courtesy of the publicity department of Brown University.

MEMBERSHIP IN THE SOCIETY

Membership in the American Sociological Society is open to persons who have an interest in the objectives of sociological scholarship and research. There are six classes of membership. Annual members pay \$6.00 per year; student members, \$4.00 per year; joint membership of husband and wife, \$7.00 per year; subscribing members, \$10.00 per year; sustaining members, \$25.00 per year; and life members who make a single payment of one hundred dollars. All classes of members receive the *American Sociological Review*. Inquiries concerning membership may be directed to the Secretary.

PROGRAM *of the*
 THIRTY-SIXTH ANNUAL MEETING

OF THE

American Sociological Society

LESTER FRANK WARD
 (1841-1913)

Headquarters: THE ROOSEVELT HOTEL, NEW YORK CITY

SATURDAY, SUNDAY, AND MONDAY

DECEMBER 27, 28, AND 29, 1941

OFFICERS OF THE SOCIETY

President

STUART A. QUEEN, Washington University

First Vice-President

JAMES H. S. BOSSARD, University of Pennsylvania

Second Vice-President

HOWARD BECKER, University of Wisconsin

Secretary

HAROLD A. PHELPS, University of Pittsburgh

Former Presidents

Edward A. Ross	E. S. Bogardus
J. P. Lichtenberger	L. L. Bernard
Charles A. Ellwood	E. B. Reuter
Robert E. Park	E. W. Burgess
John L. Gillin	F. Stuart Chapin
William I. Thomas	H. P. Fairchild
John M. Gillette	Ellsworth Faris
William F. Ogburn	Frank H. Hankins
Howard W. Odum	Edwin H. Sutherland

Robert M. MacIver

Elected Members of Executive Committee

Warner E. Gettys	Robert S. Lynd
Lowry Nelson	Herbert Blumer
Joseph K. Folsom	E. Franklin Frazier

Committee on Local Arrangements

W. C. Waterman, Chairman	Charles H. Page
Henry Pratt Fairchild	N. S. Timasheff
Francis Kilcoyne	Willard Waller

Kimball Young



All meetings except the business sessions are open to the public and, unless otherwise indicated, are held at the Roosevelt Hotel. Reservations for breakfast meetings should be made at the registration desk as early as possible. Meetings designated by the asterisk are not under the direct auspices of the Society.

PROGRAM OF THE THIRTY-SIXTH ANNUAL MEETING

SATURDAY, DECEMBER 27

- 8:30 A.M. **Registration** of members and guests of the Society and reservation of breakfast appointments. Mezzanine.
- 9:00-10:00 A.M. **Business Meeting** for reports of committees and representatives of the Society. Main Ball Room.
- 10:00-12:00 A.M. **Section on Human Ecology.** James A. Quinn, University of Cincinnati, Chairman. Small Ball Room.
"The Seashore Resort: A Satellite Community," J. Ellis Voss, University of Pennsylvania.
Discussant: Maurice Davie, Yale University.
"The Cultural Factor and Human Ecology," A. B. Hollingshead, Indiana University.
Discussant: J. H. S. Bossard, University of Pennsylvania.
"Differential Changes in the Ecology of Voting Behavior," Calvin F. Schmid, University of Washington.
- Section on Social Statistics.** Philip M. Hauser, Bureau of the Census, Chairman. Rooms E and F.
"Basic Social Trends in Cincinnati: An Analysis of Census Tract Data," Earle Eubank, University of Cincinnati.
Discussant: Glen S. Taylor, Bureau of the Census.
"Some Demographic Clues to Social Stratification," Elbridge Sibley, Division of Statistical Standards.
Discussant: Edward Shils, University of Chicago.
"The Relation Between Indices of Social Disorganization," Ernest R. Mowrer, Northwestern University.
Discussant: Francis Merrill, Dartmouth College.
Election of chairman.
- Section on the Family.** Bernhard J. Stern, Columbia University, Chairman. Main Ball Room.
"Family Trends in the United States Since 1890, with Special Reference to the Period, 1930-1940," Paul C. Glick, United States Bureau of the Census.
Discussion by R. C. Angell, University of Michigan.
"From Family Loyalty to Community Loyalty: the Impact of Western Influences on Chinese Society," Olga Lang, Institute of Social Research, Columbia University.
Discussion by J. Stewart Burgess, Temple University.
"The Changing Mexican Family," Norman S. Hayner, University of Washington.
Discussion by Dorothy Douglas, Smith College, and Robert Redfield, University of Chicago.

"The Negro Family in Brazil," E. Franklin Frazier, Howard University.

Discussion by George Simpson, Pennsylvania State College.

Committee on Conceptual Integration.* Hornell Hart, Duke University, Chairman. Rooms A and B.

Topic: The Report of the C.C.I. Sub-Committee on the Definitions of Definition.

1st hour: panel discussion of the report and original contributions supplementary thereto by R. Bierstedt, S. C. Dodd, and F. Znaniecki.

2nd hour: open forum based upon previous discussion of the definitions of definition.

Rural Sociological Society.* Rural Population and National Defense. C. E. Lively, University of Missouri, Chairman. Room Hendrick Hudson.

12:15 P.M. **Luncheon Meeting** of the Rural Sociological Society.* Room Hendrick Hudson.

1:00-3:00 P.M. **Section on Social Psychology.** Richard T. LaPiere, Stanford University, Chairman. Small Ball Room.

"The Analysis of Situational Fields, A Theoretical Orientation for Social Psychology," Leonard S. Cottrell, Jr., Cornell University.

Discussion: Read Bain, Miami University,

"Community Roles in Attitude Formation," Theodore Newcomb, University of Michigan.

"The Child's Preference for Mother or Father," M. F. Nimkoff, Bucknell University.

Section on Sociometry. William H. Sewell, Oklahoma A. and M. College, Chairman. Rooms A and B.

"The Relationship of Public Opinion Measures to Sociometric Procedures," Paul F. Lazarsfeld, Columbia University.

Discussant: R. F. Sletto, U. S. Bureau of Agriculture.

"Individual Differences in Personal Relationships," Helen H. Jennings, Columbia University.

Discussant: J. L. Moreno, Beacon, New York.

"The Preliminary Standardization of a Social Insight Scale," F. Stuart Chapin, University of Minnesota.

Discussant: G. A. Lundberg, Bennington College.

Section on Community. Everett C. Hughes, University of Chicago, Chairman. Rooms E and F.

"Industry and the Community," Conrad M. Arensberg, Brooklyn College.

"The Community as a Basis for Social Planning and Social Action in Agricultural Action Programs and

Defense," Douglas Ensminger and Charles P. Loomis, U. S. Department of Agriculture.

Discussant: Carl A. Dawson, McGill University.

Election of chairman.

3:00-5:00 P.M. **Rural Sociological Society.*** Rural Public Welfare and National Defense. Dwight Sanderson, Cornell University, Chairman. Room Hendrick Hudson.

Section on Social Theory. Chairman to be announced. Small Ball Room.

Topic: The Differentiation of Status and Role by Age and Sex.

"Age and Sex in the Social Structure of non-Literate Societies," Ralph Linton, Columbia University.

"Age and Sex in the Social Structure of the Contemporary United States," Talcott Parsons, Harvard University.

"The Adjustment of the Individual to his Age and Sex Roles," to be announced.

Discussion papers: George Devereux, University of Wyoming, Richard H. Williams, University of Buffalo.

Section on Criminology. Walter C. Reckless, Ohio State University, Chairman. Rooms E and F.

"Opportunities for Research in the Federal Prison System," James V. Bennett, Director, United States Bureau of Prisons.

"Differential Mortality in Criminal Cases in Selected Jurisdictions," C. C. Van Vechten, Jr., Institutional Section, Bureau of the Census.

"Predicting Juvenile Delinquency," H. Ashley Weeks, State College of Washington.

"Functional Classification of Criminal Behavior," Walter Webster Argow, New York University.

Discussion from the floor.

Election of chairman.

Conference on Sociometric Field Work.* J. L. Moreno, Beacon, New York, Chairman. Rooms A and B.

4:00 P.M. **Meeting of the Nominating Committee.** Library.

4:30 P.M. **Meeting of the Executive Committee.** Room C.

6:30 P.M. **Meeting of the Committee on Public Relations.** Alfred McClung Lee, New York University, Chairman. Library.

8:00 P.M. **General Meeting of the Society** under the auspices of the Committee on Participation of Sociologists in

National Affairs. C. C. Taylor, U. S. Department of Agriculture, Chairman. Main Ball Room.

Panel Discussion: Charles S. Johnson, Fisk University; Raymond F. Sletto, U. S. Department of Agriculture; Warren Thompson, Scripps Foundation, Miami University; Donald Young, University of Pennsylvania.

10:00 P.M. **Informal Smoker.** Hendrick Hudson Room.

SUNDAY, DECEMBER 28

8:00 A.M. Rural Sociological Society Breakfast.* Small Ball Room.

8:30 A.M. Alpha Kappa Delta Breakfast.* Library.
Harvard University Breakfast.* Room K.
Breakfast Meeting of the Mid-West Sociological Society.* Room H.
University of North Carolina Breakfast.* Room M.

10:00-12:00 A.M. **Conference on the General Social Science Course.** Julian Woodward, Cornell University, Chairman. Rooms A and B.

"General Introductory Courses in the Field of the Social Sciences: A Summary of Trends and Types," Leland DeVinney, University of Wisconsin, and Earl S. Johnson, University of Chicago.

"The Survey Course in the Social Sciences as an Educational Instrument: An Appraisal," Julian L. Woodward, Cornell University.

Discussion, Adolph S. Tomars, College of City of New York.

Conference on the Social Aspects of Housing. R. Clyde White, University of Chicago, Chairman. Rooms E and F.

Conference on Sociology and Sociometry as Applied to National Defense Problems. J. L. Moreno, Beacon, New York, Chairman. Small Ball Room.

Rural Sociological Society.* Rural Institutions and National Defense. Edmund deS. Brunner, Columbia University, Chairman. Room Hendrick Hudson.

1:00-2:00 P.M. **Business Meeting of the Society.** Main Ball Room.

2:00-4:00 P.M. **Section on Social Research.** Raymond Bowers, University of Rochester, Chairman. Rooms A and B.

"Bureau of the Census Experiments in Designing a Field Sample," C. L. Dedrick and M. H. Hansen, Division of Statistical Research of the United States Bureau of the Census.

"Some Problems Encountered in the Inter-Regional Standardization of a Socio-Economic Scale," William H. Sewell, Oklahoma A. & M. College.

"Selective Participation in Associational Activities," C. A. Anderson, Iowa State College.

"The Use of Logarithmic Scales in Ordering Human Groups in Time and Space," Stuart C. Dodd, American University of Beirut.

Additional papers to be read by title:

"The Problems of Integrating Social Science Research in a Governmental Research Agency," Ralph H. Danhof, Division of Program Development and Coordination, Bureau of Agricultural Economics.

"A Study of Typology," Morton F. Fosberg, New York City.

Section on Social Biology and Population. In cooperation with the Population Association of America. Clyde V. Kiser, Milbank Memorial Fund, Chairman. Small Ball Room.

"Population Dynamics, 1900 to 1940, for the United States, its Regions and Divisions," Philip M. Hauser and A. J. Jaffe, Bureau of the Census.

"Army Mortality and Morbidity," Richard O. Lang, War Department.

"The Relation of Employment Levels to Birth Rates in Germany," Dudley Kirk, Princeton University.

"Behavioral Aspects of Migration, Suggested by Research on the Negro Migrant," Lyonel C. Florant, Population Study, Virginia State Planning Board.

Section on Political Sociology. Charles J. Bushnell, University of Toledo, Chairman. Rooms E and F.

Topic: What Specific Professional Help Can the American Sociologist Give to Our Governments, Local and National, in the Present World Emergency?

Panel Discussion to be opened by C. C. Taylor, Stuart Rice, and others to be announced.

Election of chairman.

3:00 P.M. **Rural Sociological Society.*** Round Table on State and Federal Relationships. Ray E. Wakeley, Iowa State College, Chairman. Room Hendrick Hudson.

4:00 P.M. Meeting of the Resolutions Committee. Room C.

4:00-6:00 P.M. **Alpha Kappa Delta.*** Annual Business Meeting. Library.

Committee on Conceptual Integration.* Albert Blumenthal, State Teachers College, Maryville, Missouri, Chairman. Rooms E and F.

1st hour: Topic: The Report of the C.C.I. Sub-Committee on the Definitions of Culture.

Panel and open forum: B. Malinowski (discussion leader), L. L. Bernard, F. S. Chapin, and H. Hart.

2nd hour: Topic: Systematization in Sociology and its Implications for the C.C.I. Program.

Panel and open forum: S. C. Dodd (discussion leader), H. Becker, R. V. Bowers, W. Landecker, Talcott Parsons.

Section on Sociological Theory and Social Problems.

Ernest R. Mowrer, Northwestern University, Chairman. Small Ball Room.

"Interpretation of Suicide Data," Ernest Manheim, University of Kansas City.

Discussion: H. Warren Dunham, Wayne University.

"The Frame of Reference for Social Disorganization," L. Guy Brown, Oberlin College.

Discussion: John F. Cuber, Kent State University; August B. Hollingshead, Indiana University.

"Processes Involved in Society's Adjustment to Inventions," (10 minute summary), J. B. Gittler, University of Georgia.

Section on Sociology and Psychiatry. Hornell Hart, Duke University, Chairman. Rooms A and B.

Topic: What is a Well-Adjusted Personality?

Participants: Clairette P. Armstrong; E. W. Burgess; Helen H. Jennings; Alfred R. Lindesmith; Henry J. Meyer, Jr.; Delbert C. Miller; Elizabeth Proehl Moore; Harriet R. Mowrer; M. F. Nimkoff; James M. Reinhardt; Robert F. Winch; James W. Woodard; Donald R. Young; and Leslie D. Zeleny.

A mimeographed report of this section will be on sale at the Registration Desk.

5:30 P.M. **Meeting of the Executive Committee.** Room C.

8:00 P.M. **General Meeting of the Society:** Joint Session for Presidential Addresses with the Rural Sociological Society. Howard W. Odum, University of North Carolina, Chairman. Main Ball Room.

"The Role of the Village in American Rural Society," T. Lynn Smith, Louisiana State University, President of the Rural Sociological Society.

"Can Sociologists Face Reality?" Stuart A. Queen, Washington University, President of the American Sociological Society.

MONDAY, DECEMBER 29

8:00 A.M. Breakfast Meeting of the American Political Science

Association and the Section on Political Sociology.* Small Ball Room.

Breakfast Meeting of the Rural Sociological Society.* Rooms H and K.

Breakfast Meeting of the Ohio Valley Sociological Society.* Library.

Breakfast Meeting of the Southern Sociological Society.* Rooms E and F.

9:00-11:00 A.M. **General Meeting of the Society.** Stuart A. Queen, Washington University, Chairman. Main Ball Room. Topic: Democracy and Social Control.

"Democracy and Social Control in Industrial Relations," William H. Stead, Washington University.

"Democracy and Social Control in Race Relations," Charles S. Johnson, Fisk University.

"Free Speech in War Time," Howard B. Woolston, University of Washington.

Discussants: Bessie Bloom Wessell, Connecticut College; Guy B. Johnson, University of North Carolina; Warner E. Gettys, University of Texas.

11:00-12:30 **Annual Business Meeting of the Society** and Election of Officers. Main Ball Room.

10:00-12:00 **Rural Sociological Society.*** The Role of the Rural Sociologist in National Defense. John H. Kolb, University of Wisconsin, Chairman. Room Hendrick Hudson.

12:15 P.M. **Joint Luncheon of the Rural Sociological Society** and the American Farm Economic Association.* Room Hendrick Hudson.

1:00-3:00 P.M. **Section on Educational Sociology.** M. Wesley Roper, Kansas State Teachers College, Chairman. Rooms A and B.

Topic: Youth in our National Economy.

"Vocational Training and Employment of Youth," Selden C. Menefee. Social Housing Research Analyst, United States Housing Authority.

"Youth and National Morale," Delbert C. Miller, Washington State College.

"Social Selection and Occupational Choice," Noel P. Gist and C. T. Pihlblad, University of Missouri, and Cecil L. Gregory, State Social Security Commission, Jefferson City, Missouri.

Discussant: Frank Lorimer, The American University. Election of chairman.

Section on Sociology and Religion. Samuel C. Kincheloe, Chicago Theological Seminary, Chairman. Rooms E and F.

A brief introductory statement on the Problems of the Relationship of Institutions Within the Local Community by the chairman.

"Finding the Churches' Place in the Community Pattern," Arthur L. Swift, Jr., Union Theological Seminary.

"Churches, their Members and their Ecology," Marvin R. Schafer, College of Puget Sound.

Section on Sociology and Social Work. Small Ball Room. Topic: The Expanding Function of Government in Meeting Social Need.

"The Function of Government in Relation to Economic Security," Dorothy Kahn, American Association of Social Workers.

"The Responsibility of Government in Medical Care," Michael M. Davis, Committee on Research in Medical Economics.

"The Relation of Government to Industrial Mediation," William H. Davis, Chairman, National Defense Mediation Board.

3:00-5:00 P.M. **General Meeting of the Society.** Stuart A. Queen, Washington University, Chairman. Main Ball Room. Topic: Inter-Cultural Relations in the Americas.

"A Program for the Integration of Social Research in the Americas," Lucio Mendieta y Nuñez, National University of Mexico.

"Some Cultural Barriers to American Solidarity," E. Franklin Frazier, Howard University.

Discussants: Clarence Senior, University of Kansas City; Nathan L. Whetten, University of Connecticut; Samuel H. Lowrie, Bowling Green State University.

Rural Sociological Society*: Joint Session with the American Farm Economics Association.* Round Table of Tenure Problems and Policies. H. C. M. Case, University of Illinois, Chairman. Room Hendrick Hudson.

5:00 P.M. Meeting of the New Executive Committee. Room C.

LOCATION OF ROOMS

All rooms (except the Hendrick Hudson Room which is off the main lobby) are on the mezzanine floor, and all may be reached from the Assembly Foyer except the Small Ball Room which opens directly from the

Main Ball Room. Rooms designated by letters and the Library are on the 46th Street side of the hotel.

HEADQUARTERS

The headquarters of the Society will be the Roosevelt Hotel, 45th Street at Madison Avenue, where a registration and information desk will be maintained. Members are requested to register as soon as possible after arrival.

Reservations should be made as early as possible. The rates at the Roosevelt Hotel are: Single room, with bath, \$3.00; double room with bath, \$5.00.

		With Bath	
The rates at other hotels are:		Single	Double
Woodstock	127 West 43rd Street	\$2.50	\$3.50
Murray Hill	41st Street and Park Avenue	2.50	4.50
Tudor	42nd Street and Second Avenue	2.00	3.50
Lincoln	44th to 45th St. at Eighth	3.00	4.00
Gregorian	42 West 35th Street	2.00	2.50

GARAGE FACILITIES

Garage rates at the hotels are \$1.00 to \$1.50 for 24 hours. Open-air storage spaces vary from \$.75 to \$1.00.

TRANSPORTATION

No convention rate has been allowed by the various passenger associations. However, it is suggested that members consult their local ticket office about possible round trip or Christmas rates.

OTHER CONVENTIONS

Other Societies meeting in New York, with the names of their secretaries, are:

American Accounting Association, Robert L. Dixon, Jr., University of Chicago.

American Association for Labor Legislation, John B. Andrews, New York City.

American Association of University Teachers of Insurance, Chester A. Kline, University of Pennsylvania.

American Business Law Association, Gerald O. Dykstra, Ohio University.

American Economic Association, James Washington Bell, Northwestern University.

American Farm Economic Association, Asher Hobson, University of Wisconsin.

American Marketing Association, Albert Haring, Indiana University.

American Statistical Association, Richard L. Funkhouser, Washington, D. C.

Econometric Society, Alfred Cowles, III, University of Chicago.