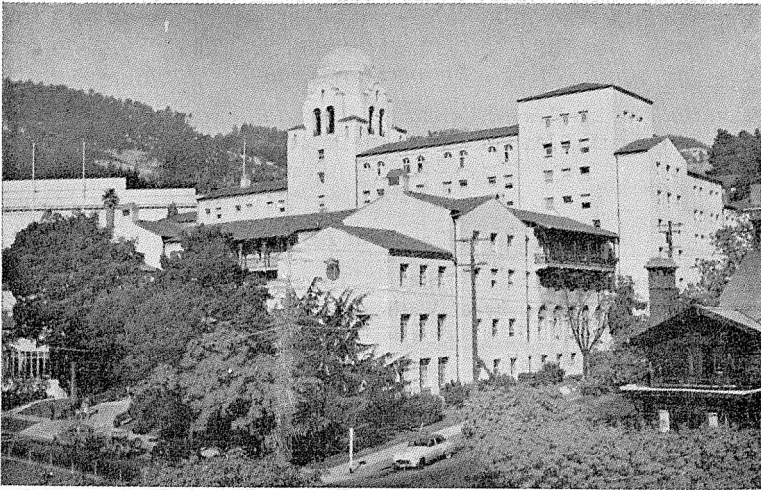


Preliminary Program

Mrs. Alice Myers

American Sociological Society



INTERNATIONAL HOUSE, UNIVERSITY OF CALIFORNIA

Forty-Eighth Annual Meeting

University of California
Berkeley, California

August 30, 31, and September 1, 1953

IN COOPERATION WITH THE PACIFIC
SOCIOLOGICAL SOCIETY

AMERICAN SOCIOLOGICAL SOCIETY

COUNCIL FOR THE YEAR 1952-53

Officers

President, SAMUEL A. STOFFER, Harvard University
President-Elect, FLORIAN ZNANIECKI, University of Illinois
First Vice-President, HERBERT BLUMER, University of California, Berkeley
Second Vice-President, JESSIE BERNARD, Pennsylvania State College
Secretary, JOHN W. RILEY, JR., Rutgers University
Editor, ROBERT E. L. FARIS, University of Washington
Executive Officer, MATILDA WHITE RILEY, Rutgers University

Former Presidents

E. FRANKLIN FRAZIER, Howard University
LEONARD S. COTTRELL, JR., Russell Sage Foundation
ROBERT C. ANGELL, University of Michigan
DOROTHY SWAINE THOMAS, University of Pennsylvania

Elected at Large

READ BAIN, Miami University
ROBERT E. L. FARIS, University of Washington
IRA DE A. REID, Haverford College
ROBIN M. WILLIAMS, JR., Cornell University
HOWARD BECKER, University of Wisconsin
ROBERT K. MERTON, Columbia University
THEODORE M. NEWCOMB, University of Michigan
CONRAD TAEUBER, Bureau of the Census
PHILIP M. HAUSER, University of Chicago
GUY B. JOHNSON, University of North Carolina
CALVIN F. SCHMID, University of Washington
KIMBALL YOUNG, Northwestern University

Elected from Affiliated Societies

HOWARD W. BEERS, Rural
LEONARD BROOM, Pacific
W. FRED COTTRELL, Ohio Valley
THOMAS D. ELIOT, Midwest
AUGUST B. HOLLINGSHEAD, Eastern
CHARLES HUTCHINSON, District of Columbia
KATHARINE JOCHER, Southern
HARRY E. MOORE, Southwestern

Executive Office: New York University
Washington Square
New York 3, N. Y.

PROGRAM COMMITTEE

This Program was planned and organized by the members of the Program Committee, Research Committee, Contributed Papers Committee, and other appointed members of the Society.

SAMUEL A. STOFFER, Harvard University, Chairman, *Ex Officio*
LEONARD BROOM, University of California, Los Angeles, General Chairman

HOWARD W. BEERS, University of Kentucky	DANIEL O. PRICE, University of North Carolina
ROBERT DUBIN, University of Illinois	JOHN W. RILEY, JR., Rutgers University
WALTER FIREY, University of Texas	KARL F. SCHUESSLER, Indiana University
PAUL C. GLICK, Bureau of the Census	ELBRIDGE SIBLEY, Social Science Research Council
LEO A. HAAK, Michigan State College	FRED L. STRODTBECK, Yale University
NORMAN S. HAYNER, Washington State Board of Prison Terms and Paroles	RALPH H. TURNER, University of California at Los Angeles
SIGURD JOHANSEN, New Mexico College of Agriculture and Mechanical Arts	H. ASHLEY WEEKS, New York University
PAUL MEADOWS, University of Nebraska	VINCENT H. WHITNEY, Brown University
ITHIEL DE SOLA POOL, Hoover Institute and Library, Stanford University	ARTHUR L. WOOD, University of Connecticut
ROBERT F. WINCH, Northwestern University	

LOCAL ARRANGEMENTS COMMITTEE

Chairman, JUDSON T. LANDIS, University of California, Berkeley

REINHARD BENDIX, University of California, Berkley	ROBERT NISBET, University of California, Riverside
HAROLD JACOBY, College of the Pacific	RALPH H. TURNER, University of California, Los Angeles
CARLO LASTRUCCI, San Francisco State College	PAUL WALLIN, Stanford University

Attention is called to the meetings of the **GERONTOLOGICAL SOCIETY**, August 25, 26, 27, San Francisco, and the **SOCIETY FOR THE STUDY OF SOCIAL PROBLEMS**, August 29, August 31 (after 4 p.m.), September 1 (8 p.m.), Berkeley.

SUNDAY, AUGUST 30

8:30 A.M. REGISTRATION

9:30 A.M. RURAL SOCIOLOGY (joint session with the Rural Sociological Society)

Chairman, HOWARD W. BEERS, University of Kentucky

CHARLES P. LOOMIS, JULIO O. MORALES, RALPH ALLEE, Michigan State College

"Study of the Strategy of Change on Large Estates and Small Farms in Latin America"

RENEE M. ABRAMSON, Pennsylvania State College

"An Analysis of Family Values in Relation to Social Status in a Rural Pennsylvania Community"

EUGENE A. WILKENING, University of Wisconsin

"Change in Farming Technology as Related to Familism, Family Decision Making, and Family Integration"

C. ARNOLD ANDERSON, University of Kentucky

"Economic Status Differentials within Southern Agriculture"

SOCIAL PSYCHIATRY

Chairman, H. ASHLEY WEEKS, New York University

Role Behavior

JOHN R. GOLDSMITH, CARL E. HOPKINS, University of Oregon

"Duodenal Ulcer and Social Action: An Hypothesis"

DANIEL R. MILLER, GUY E. SWANSON, University of Michigan

"Studies of Defensive Techniques and Role Behaviors"

Addiction

ROBERT COBB MYERS, New Jersey Department of Institutions and Agencies

"Antabuse and Alcoholism"

SOLOMON KOBRIN, Chicago Area Project

"Opiate Addiction Among Adolescent Males in Chicago"

EVA ROSENFELD, DANIEL M. WILNER, ISIDOR CHEIN, ROBERT S. LEE, WILLIAM SPINRAD, New York University

"A Study of Teen-Age Narcotics Use in New York City"

ALBERT D. ULLMAN, Tufts College

"The First Drinking Experience of Addictive and of 'Normal' Drinkers"

EDUCATIONAL SOCIOLOGY

Chairman, LEO A. HAAK, Michigan State College

PAUL M. SHELDON, Occidental College

"Questions Raised by an Investigation of the Families of Highly Gifted Children"

EDWARD ABRAMSON, FRANK HARTMAN, Pennsylvania State College

"The Relation of Taking the Role of 'Person' of the Teacher and Course Grades"

A. PAUL HARE, Wellesley College

"Extra-Curricular Activities in College"

PHILIP M. SMITH, Central Michigan College of Education

"The Role of Sociology in Teacher Training Institutions"

DUNCAN V. GILLIES, CARLO L. LASTRUCCI, San Francisco State College

"Empirical Validation of the Effectiveness of a College Marriage Course"

THOMAS D. ELIOT, Northwestern University

"Do Norwegians Need a Program of Family Life Education?"

12:00 M. SUNDAY DINNER MEETING (Advance reservation required.)

“Sociologists Look to the Future”

A voice recording from each of the past Presidents of the American Sociological Society offering counsel to the coming generation of sociologists.

2:00 P.M. SOCIAL PROBLEMS

Chairman, JAY RUMNEY, Rutgers University

Theory

ABBOTT P. HERMAN, University of Redlands

“A Comparative Study of Sociological Frameworks for the Investigation and Analysis of Social Problems”

JOSEPH S. HIMES, JR., North Carolina College

“Value Analysis in the Theory of Social Problems”

HERBERT A. BLOCH, St. Lawrence University

“Structured Roles and Anomie”

Attitudes and Mental Health

SHIRLEY A. STAR, University of Chicago

“Popular Thinking in the Field of Mental Health”

DONALD D. STEWART, University of Arkansas

“A Note on Attitudes Toward a State Mental Hospital”

HOWARD E. FREEMAN and GENE GIRARD KASSEBAUM, Armed Forces Examining Station, Shreveport

“The Sociology of the Illiterate”

ORGANIZATIONAL BEHAVIOR

Chairman, VINCENT H. WHITNEY, Brown University

KENNETH C. WAGNER, University of North Carolina

“Latent Functions of an Executive Control: A Sociological Analysis of a Social System Under Stress”

KURT LANG, University of Chicago

“Role-Orientations in a Military Bureaucracy: Scalogram Analysis Applied to Qualitative Data”

JOHN E. TSOUDEROS, University of California, Los Angeles

“Organizational Arrangement for Certain Organizational Needs”

FREDERICK W. TERRIEN, DONALD L. MILLS, Stanford University

“The Effect of Changing Size upon the Internal Structure of Organizations”

BURTON R. CLARK, University of California, Los Angeles

“A Case Study in the Establishment of a Precarious Value: Adult Education in the Public Schools”

THEODORE CAPLOW, LEO G. REEDER, University of Minnesota

“Internal Orientation in a Large Military Organization”

URBAN SOCIOLOGY

Chairman, WALTER FIREY, University of Texas

Urbanism

FRED C. IKLE, Bureau of Applied Social Research, Columbia University

“Sociological Effects of War Destruction in Cities: Their Significance for Urban Ecology”

NATALIE ROGOFF, Columbia University

“The Universe of Cities: Some Preliminary Considerations”

GEORGE R. PAPPAS, Human Resources Research Institute, Alabama

“A Case Study of a New Pattern of Urban Decentralization”

Urban Research Methods

NORMAN F. WASHBURNE, Southern State College

**“‘Urban’ Attitudes and Responses as Related to Residence
in Urban Communities and to Socio-economic Status”**

LESLIE KISH, University of Michigan

“Differentiations among Ecological Units”

WILLIAM H. FORM, JOEL SMITH, JAMES D. COWHIG, Michigan State
College

“Methodological Problems in the Study of Urban Ecology”

THE ROLE OF THE SOCIOLOGIST IN CORRECTION

Chairman, NORMAN S. HAYNER, Washington State Board of Prison
Terms and Paroles

AUSTIN H. MACCORMICK, School of Criminology, University of
California, Berkeley

“Contributions of the Sociologist to Prison Management”

PETER P. LEJINS, University of Maryland

“Training Correctional Personnel”

WALTER C. RECKLESS, School of Administration, Ohio State Uni-
versity

**“The Role of the Expert in Correctional Administration in
a Requesting Country”**

WALTER A. GORDON, Department of Correction, State of California

“Contributions of the Sociologist to Probation and Parole”

CLARENCE C. SCHRAG, University of Washington

“The Actuarial Sociologist”

LEONARD Z. BREEN, Illinois Institute of Technology, and LEO J.
SHAPIRO, Consultant, Chicago

**“Louis Wirth: Witness. A Sociologist’s Function and Con-
tribution in a Court of Law”**

Discussion: RICHARD A. MCGEE, Department of Correction, State
of California

4:00 P.M. CAREER DYNAMICS

Chairman, OSWALD HALL, McGill University

E. GRANT YOUMANS, United States Department of Agriculture
**"Social Factors in the Work Attitudes and Interests of a
Representative Sample of 12th Grade Michigan Boys"**

HERMAN M. CASE, Washington State College
**"Two Kinds of Crystallized Occupational Choice Behavior;
A Problem in Delineation and Relationship"**

DAVID S. BUSHNELL, University of Washington
"Career Choice and Job Satisfaction: A Study of the Military Man"

DAVID N. SOLOMON, Defense Research Medical Laboratories, Toronto
"Social Structure of Medicine in Chicago"

ALBERT J. REISS, JR., Vanderbilt University
"Factors in Occupational Mobility"

ROBERT W. HABENSTEIN, University of Missouri
"Language, Self, and Ambivalence in Funeral Director-Client Relations"

A. R. MANGUS, The Langley Porter Clinic, San Francisco
"Medical Sociology: A New Field of Social Science Research and Teaching"

ROLE THEORY AND REFERENCE GROUPS

Chairman, to be announced

Role Theory

NEAL GROSS, WARD S. MASON, Harvard University
"Role Conceptualization and Empirical Complexities"

ALAN P. BATES, JERRY S. CLOYD, University of Nebraska
"Toward the Development of Operations for Defining Group Norms and Member Roles"

RALPH H. TURNER, University of California, Los Angeles
"Self and Other in Moral Judgment"

Reference Groups

LIONEL J. NEIMAN, Indiana University

"Changing Attitudes and the Conceptions of Peer Groups"

SAMUEL W. BLOOM, Bennington College

"A Study of Liberalism-Conservatism"

ELMER G. LUCHTERHAND, University of Connecticut

**"Social Aspects of Trauma and Adjustment of Prisoners in
Nazi Concentration Camps"**

RACE RELATIONS

Chairman, JAMES T. LAING, Kent State University

Race Relations and the Community

FRANK F. LEE, Northeastern University

"Race Relations in a Small New England Industrial Town"

CLARENCE E. GLICK, University of Hawaii

"Social Types and Social Roles in Race Relations"

JOSEPH K. BALOGH, Bowling Green State University

**"The Role of the Hungarian Foreign Language Press in the
Assimilation of Hungarian-Americans"**

HENRY J. MEYER, JOHN G. JACKSON, New York University

**"Study of Acting in One's Own Behalf (Complaints Against
Discrimination)"**

Race Relations and Economic Participation

HORACE WILLIAM MOONEY, University of Michigan

"Some Recent Data on Negro-White Savings Differentials"

E. WILLIAM NOLAND, University of North Carolina

**"The Negro Industrial Worker Struggles for His Niche: A
Study of the Integration Process"**

MONDAY, AUGUST 31

9:00 A.M. RESEARCH TECHNIQUES

Chairman, CALVIN F. SCHMID, University of Washington

Scale Analysis

VERNON DAVIES, State College of Washington

"A Suggested Means of Refining Guttman Scale Analysis"

MATILDA WHITE RILEY, Rutgers University

"Scale Analysis of Sociological Variables"

Other Techniques

EDWARD GROSS, State College of Washington, and HERMAN J. LOETHER, DUANE N. STRINDEN, University of Washington

"A Method for the Analysis of Small Samples"

JOSEPH E. BACHELDER, University of Illinois

"An Application of a Semantic Scale to Political Opinion and Behavior"

RICHARD J. HILL, University of Washington

"Inconsistency in Paired Comparison Judgments"

SALLY WHELAN CASSIDY, Chicago

"The Use of a Modified Thematic Apperception Test in Sociological Research"

SOCIAL ADJUSTMENT

Chairman, STUART A. QUEEN, Washington University, St. Louis

FRED L. STRODTBECK, Yale University

"Implications of the Study of Family Interaction for the Prediction of Achievement"

WALTER L. SLOCUM, Washington State College

"Parental Authority Patterns and Adjustment at College"

ERNEST R. MOWRER, Northwestern University

"Some Affectional Factors in the Adjustment of Twins"

LOUISA P. HOWE, University of California, Berkeley
"Stages of Ego Development"

THOMAS FORD HOULT, Eastern New Mexico University
"Familiar Cultural Environment as a Factor in Individual Adjustment"

JOSEPH H. BUNZEL, Mayor's Advisory Committee for the Aged,
New York City
"Attitudinal Conflicts in the Post-Employment Years among Three Low Fixed-Income Groups"

COMMUNICATION IN ORGANIZATION

Chairman, ROBERT DUBIN, University of Illinois

CHARLES D. McGLAMERY, University of Washington
"Speed and Accuracy of Work Communication—A Problem of Criterion Measurement"

JACK LONDON, University of Chicago
"Impact of Company Policy Upon Discrimination"

HOWARD BAUMGARTEL, University of Michigan
"Survey Feedback Experiment"

EVERETT K. WILSON, Antioch College
"Community Participation in Policy Formation: An Analysis of an Attempt to Implement Democratic Processes in a College Community"

11:00 A.M. BUSINESS MEETING

2:00 P.M. STRATIFICATION

Chairman, to be announced

Social Strata

STANLEY A. HETZLER, Ohio State University
"The Distinctiveness of Social Class"

THOMAS E. LASSWELL, George Pepperdine College

"A Study of Social Stratification Using an Area Sample of Raters"

C. WAYNE GORDON, University of Rochester

"Social Status Systems in a High School"

PAUL OREN, Kent State University

"Social Status Differences in Inter-Personal Power Relationships: An Approach to the Analysis of Class"

Stratification and Social Psychiatry

JEROME K. MYERS, LESLIE SCHAFFER, Yale University

"Social Stratification and Psychiatric Practice: A Study of an Out-Patient Clinic"

AUGUST B. HOLLINGSHEAD, FREDERICK C. REDLICH, Yale University

"Social Stratification and Schizophrenia"

SMALL GROUPS

Chairman, LEONARD S. COTTRELL, JR., Russell Sage Foundation

E. PAUL TORRANCE, Stead Air Force Base, Nevada

"The Behavior of Small Groups under the Stress Conditions of 'Survival' "

JOHN W. RILEY, JR., JACKSON TOBY, Rutgers University

"Status and Interpersonal Communication in Informal Groups"

OMAR KHAYYAM MOORE, RICHARD RUDNER, SCARVIA ANDERSON, Naval Research Laboratory, Washington, D. C.

"The Sentential Calculus and Small Group Experimentation"

BENJAMIN B. WOLMAN, Columbia University

"Instrumental, Mutual Acceptance and Vectorial Groups"

GEORGE K. LEVINGER, Research Center for Group Dynamics, University of Michigan

"A Framework for Studying Perceptual and Behavioral Aspects of Social Influence Processes"

CRIMINOLOGY

Chairman, KARL F. SCHUESSLER, Indiana University

Offender Characteristics

RUPERT C. KOENINGER, Sam Houston State College

"M.M.P.I. Profiles of Texas Prison Inmates"

DANIEL GLASER, Illinois Parole and Pardon Board

"A Reconsideration of Some Parole Prediction Factors"

IRWIN DEUTSCHER, University of Missouri

"The Petty Offender: A Sociological Alien"

Law Enforcement Process

WILLIAM A. WESTLEY, McGill University

"Secrecy and the Police"

ROBERT C. SORENSEN, Operations Research Office, Johns Hopkins University

"The Role of Public Reaction in the Behavior of the Accused Criminal"

THOMAS C. ESSELSTYN, University of Illinois

"Crime and Its Control in the Open Country"

Discussion: DONALD R. CRESSEY, University of California, Los Angeles

TUESDAY, SEPTEMBER 1

9:00 A.M. RACE RELATIONS

Chairman, EDGAR T. THOMPSON, Duke University

(Mrs.) DORRIS WEST GOODRICH, University of California, Berkeley
"Indian Nationalism and the Marginal Man"

JOHN L. THOMAS, S.J., St. Louis University
"Patterns of Ethnic Disintegration for Selected Groups"

ANDREW W. LIND, University of Hawaii
"A Measure of Miscegenation in Hawaii"

GERHART SAENGER, New York University
"The Effectiveness of the Race Series Pamphlets of UNESCO"

WILBUR B. BROOKOVER, Michigan State College
"The Dynamics of Prejudice among Maple County Youth"

DIETRICH C. REITZES, Indiana University, and JOSEPH D. LOHMAN,
University of Chicago
"Deliberately Organized Groups and Racial Behavior"

ELITES AND LEADERSHIP

Chairman, ROBERT E. L. FARIS, University of Washington

Elites

ALEXANDER VUCINICH, San Jose State College
"The Social Role of Soviet Scientists"

DANIEL LERNER, School of International Affairs, Columbia University
"The Soviet Military Elite"

HERBERT MAZA, Columbia University
"The Influence of Private Individuals on the Development of International Organization"

Situational Leadership

RAYMOND W. MACK, University of Mississippi

"The Prestige System of an Air Base; Squadron Ranking and Morale"

BRUCE M. PRINGLE, Management and Marketing Research Corporation

"Situational Elements in Combat Leadership"

HUGH W. GHORMLEY, Eureka College

"Key Factors Connected with Church Leadership"

COMMUNITY AND SOCIAL STRUCTURE

Chairman, HOWARD E. JENSEN, Duke University

Community

SVEND RIEMER, University of California, Los Angeles

"A Measurement of Neighborhood Cohesion"

RICHARD E. DUWORS, Bucknell University

"The Principle of First Definitions and Town Finances"

JOHN JAMES, University of Oregon

"A Study of the Small Group Structure of a Small Community"

LUKE M. SMITH, Sweet Briar College

"Two Methods of Measuring Community Integration"

Social Structure

FRED W. VOGET, University of Arkansas

"Structure and Function in Crow Culture and Society"

RICHARD T. MORRIS, RAYMOND J. MURPHY, Northwestern University

"The Utility of Situs Analysis in the Study of Social Structures"

11:00 A.M. BUSINESS MEETING

1:30 P.M. COMMUNICATION AND OPINION

Chairman, ITHIEL DE SOLA POOL, Hoover Institute and Library, Stanford University

Communication

T. EARL SULLENGER, Municipal University of Omaha
“Comparative Preferences of Radio and Television Programs with Emphasis on Effects of Television on the Preferences of Radio Programs”

GILBERT GEIS, University of Oklahoma
“American Motion Pictures in Norway”

BRUCE LANNES SMITH, Foreign Service Institute, U. S. Department of State
“Methods for Study and Reporting of Data on International and Intercultural Communication”

Political Opinion

WILLIAM SPINRAD, Bureau of Applied Social Research, Columbia University
“Ecological Analysis of Voting Behavior in New York City, 1941-1945”

JOHN M. FOSKETT, University of Oregon
“Participation and Non-participation in the Policy Formation Process at the Community Level”

RESEARCH METHODS

Chairman, FLORIAN ZNANIECKI, University of Illinois

HARLEY O. PRESTON, American Institute for Research
“Applications of the Critical Incidence Technique to Social Research”

JULIUS A. JAHN, State College of Washington

"The Statistical-Experimental Evaluation of Qualitative and Quantitative Predictions"

S. STEWART WEST, University of Alaska

"Dependence of Suicide and Homicide Rates Upon Race and Environment"

EVON Z. VOCT, Harvard University

"Use of Crisis Situation as a Method in Values Research"

CHESTER ALEXANDER, Westminster College

"Culture and Longevity"

STUART C. DODD, University of Washington

"A Predictive Theory of Opinion; Using Nine Factors of Mode and Tense"

THE WORKER IN INDUSTRIAL ORGANIZATION

Chairman, PAUL MEADOWS, University of Nebraska

HAROLD L. SHEPPARD, Wayne University

"Characteristics of Loyal Union Members"

DAISY M. LILIENTHAL, BERNARD KARSH, University of Chicago

"Group Consciousness in an Organizing Strike: Case Study"

SCOTT A. GREER, Occidental College

"Control and Consent in the Local Labor Union"

FRED H. BLUM, University of California, Berkeley

"Perception of, and Participation in, the Social Process"

FLOYD C. MANN, University of Michigan

"Study of Certain Aspects of Job Satisfaction as a Function of Inferred Discrepancy Between Achievement and Aspiration"

3:30 P.M. POPULATION

Chairman, A. J. JAFFE, Bureau of Applied Social Research, Columbia University

C. A. McMAHAN, University of Georgia, and JOHN K. FOLGER, Human Resources Research Institute

"A Study of Mortality and Other Selected Demographic Characteristics of Retired U. S. Regular Army Officers, 1924-1948"

GERALD J. SCHNEPP, JOHN T. KRUZ, St. Louis University

"Length of Life of Male Religious"

DUDLEY KIRK, EARL E. HUYCK, U. S. Department of State, Washington, D. C.

"The Pattern of Post War Overseas Migration from Europe"

ROBERT H. TALBERT, Texas Christian University

"The Interdecennial Measurement of Population Change Within Urban Areas"

HENRY S. SHRYOCK, JR., JACOB S. SIEGEL, U. S. Bureau of the Census

"Accuracy of the Postcensal Estimates of Population"

JOSEPH W. EATON, ALBERT J. MAYER, Wayne University

"A Unique Case of Population Growth: A Report of the Hutterite Study"

JOSEPH A. CAVANAUGH, U. S. Embassy, Lima, Peru

"Population, Housing and Health Census Techniques for a Medium-Sized City in Peru"

FAMILY

Chairman, PAUL WALLIN, Stanford University

HARVEY J. LOCKE, University of Southern California

"Measuring and Predicting Adjustment in Marriage"

HAROLD T. CHRISTENSEN, Purdue University

"Premarital Pregnancy as a Factor in Divorce"

ROBERT F. WINCH, THOMAS KTSANES, Northwestern University
"The Theory of Complementary Needs"

MARVIN B. SUSSMAN, Union College
"Family Continuity: Selective Factors which Affect Relationships between Families at Generational Levels"

JESSE R. PITTS, Harvard University
"The Family Enterprise"

CARLE C. ZIMMERMAN, CARLFRED B. BRODERICK, Harvard University
"Nature and Role of Informal Family Groups"

BUREAUCRACY

Chairman, PHILIP SELZNICK, University of California, Berkeley

NAHUM Z. MEDALIA, University of Washington
"Measuring Followers' Perception of Leaders' Human-relations Mindedness in a Military Organization"

ROY G. FRANCIS, ROBERT C. STONE, Tulane University
"Bureaucratic Variable in a Government Organization"

PETER M. BLAU, Cornell University
"Cooperation and Competition in a Bureaucratic Situation"

RICHARD CONRAD, FRED R. CRAWFORD, FREDERICK H. ESCH, Human Resources Research, Institute, Alabama
"Bureaucratic Organizations and Employes; Differential Definitions of Situations, Commitments and Actions"

MORTON RUBIN, University of Wisconsin
"The Israeli Social Worker as Functionary in a Bureaucracy: Israel New Immigrant Towns, 1950-1953"

SOCIAL CHANGE

Chairman, to be announced

FREDERICK ELKIN, McGill University

"Popular Hero Symbols in American Life"

HARIDAS T. MUZUMDAR, Cornell College, Iowa

"A Redefinition of Institution as a Conceptual Tool"

BELA KOVRIG, Marquette University

"An Analysis of Concept of Social Movement"

PAUL JACOBS, Institute of Industrial Relations, University of California, Berkeley

"Participation in and Commitment to an Old Age Movement"

8:00 P.M. PRESIDENTIAL ADDRESSES (joint meeting with Pacific Sociological Society and Society for the Study of Social Problems)

Chairman, DONALD R. YOUNG, Russell Sage Foundation

"Attitudes and Values in Sociological Research," ERNEST W. BURGESS, President, Society for the Study of Social Problems

"Experiments on Interaction—Some Tested Assumptions and Hypotheses as to Basic Dimensions," STUART C. DODD, President, Pacific Sociological Society

"Measurement in Sociology," SAMUEL A. STOFFER, President, American Sociological Society

Committee Meetings

COUNCIL, 1952-53

- August 29, 10:00 A.M. — Meeting
12:00 M — Informal luncheon meeting
1:15 P.M. — Meeting
August 30, 4:30 P.M. — Meeting
August 31, 4:30 P.M. — Meeting (tentative)

COUNCIL, 1953-54

September 1, 4:30 P.M. — Meeting

COMMITTEE ON STANDARDS AND ETHICS IN RESEARCH PRACTICE, ALFRED
McCLUNG LEE, *Chairman*

August 30, 9:30 A.M. — Open to interested members of the Society

GLAISTER A. ELMER, Air University Far East Research Group

“Integrity: The First of the Field Research Requirements”

HANS ZEISEL, Law School, University of Chicago

“The Relations of Non-Profit Institutions with Sources of Research Funds”

CARROLL D. CLARK, University of Kansas

“The Relations of Public Institutions with Sources of Research Funds”

MABEL A. ELLIOTT, Pennsylvania College for Women

**“The Relations of Individual Researchers, Including Textbook Writers, with
Subtle and Crude Outside Pressures”**

S. M. MILLER, Brooklyn College

“The Types of Research Projects Proper for Researchers to Undertake”

COMMITTEE FOR LIAISON WITH NATIONAL COUNCIL FOR THE SOCIAL
STUDIES, LESLIE D. ZELENY, *Chairman*

August 30, 2:00 P.M. — Open to interested members of the Society and members of
the National Council for the Social Studies

“Ways in Which Sociologists Can Aid Teachers of the Social Studies”

Speakers to be announced

COMMITTEE ON TRAINING AND PROFESSIONAL STANDARDS, CALVIN F.
SCHMID, *Chairman*

August 31, 9:00 A.M. — open to interested members of the Society

Speakers to be announced

MEMBERSHIP COMMITTEE AND REPRESENTATIVES OF THE COMMITTEE,
WELLMAN J. WARNER, *Chairman*

August 31, 12:30 P.M. — Special Luncheon Meeting

COMMITTEE ON NOMINATIONS AND ELECTIONS, 1953-54, Chairman to be appointed

Time to be announced

Other Committee meetings to be announced

PACIFIC SOCIOLOGICAL SOCIETY Council Meeting and Annual
Business Meeting times to be announced.

*If you are **LOOKING FOR A JOB**—
If you have a **VACANCY TO FILL**—*

SEND DETAILS FOR LISTING IN THE SOCIETY'S
EMPLOYMENT BULLETIN

- issued nearly every month
- providing complete anonymity to both applicant and listor of vacancy
- bringing together prospective employers and employees
- entailing no obligation to acknowledge replies which come to you, unless they are of real interest
- eliciting hundreds of answers each month
- resulting in many actual placements

Members say: “practical and fills a real professional need”
 “especially valuable in placing the right people in the
 right places”
 “a help in advising students on occupational opportunities”

Employers say: “an amazing way of smoking out candidates whom you
 would never suspect of wanting to move from their
 present positions”
 “we received over thirty replies and were both pleased
 and surprised at their calibre. Ten of them could qualify
 for top positions in almost any first-class institution”
 “we anticipate completing the staff from the applications
 received”

THE AMERICAN SOCIOLOGICAL SOCIETY
New York University, Washington Square, New York 3, N.Y.

SOCIOLOGY

The Science of Society

by Jay Rumney and Joseph Maier, *Rutgers Univ.*

THE BEST SINGLE VOLUME INTRODUCTION TO SOCIETY FOR THE BEGINNING STUDENT

"I know of nothing that covers so much ground in so little space and does it so well."—*Howard Becker, Univ. of Wisconsin*

"The Science of Sociology should be of great value for those who teach one semester introductory courses in sociology. It provides a clear and succinct exposition of basic concepts and principles in such brief compass that it is also possible to utilize other readings without overburdening students."—*Ely Chinoy, Smith College*

Ready in May **200 pages** **Text Edition** **\$2.25**

THE WORLD OF PRIMITIVE MAN

by Paul Radin

An internationally eminent anthropologist draws a picture of the world primitive man fashioned for himself, and its points of resemblance and difference with the world of civilized man. To illustrate his points, Dr. Radin has chosen a number of interesting texts from all parts of the primitive world.

Ready in May **384 pages** **\$5.00**

THE QUEST FOR UTOPIA

An Anthology of Imaginary Societies

by Glenn Negley and J. Max Patrick

This anthology makes available in English essential portions of over 35 out-of-print or untranslated, social—political—economic Utopias written from 1500 to 1950. *City of the Sun* is here given a new, complete translation. Stresses Contributions to our social—political—economic thought that not only add to our pool of knowledge but are often exciting reading.

608 pages **\$6.75**

Announcing

Schuman's College "Paperbacks"—\$1.00 each

WHAT IS HISTORY by V. Gordon Childe

FROM SAVAGERY TO CIVILIZATION by Grahame Clark

FEUDAL ORDER by Marion Gibbs

**THE DECLINE OF THE ROMAN EMPIRE IN THE
WEST** by Frank W. Walbank

SOCIAL EVOLUTION by V. Gordon Childe

these books may be ordered from

HENRY SCHUMAN, INC. **20 East 70th Street** **New York 21**

HARPER'S

HAS PUBLISHED ALL THESE
DISTINGUISHED TITLES
IN THE LAST TWO YEARS!

Under the editorship of F. STUART CHAPIN

AMERICAN URBAN COMMUNITIES, by Wilbur C. Hallenbeck. 1951. 617 pages.....	\$6.00
BUILDING YOUR MARRIAGE, by Rex A. Skidmore and Anthon S. Cannon. 1951. 656 pages.....	\$5.00
COMMUNITY WELFARE ORGANIZATION, by Herbert H. Stroup. 1952. 612 pages.....	\$6.00
CRIME IN MODERN SOCIETY, by Mabel A. Elliott. 1952. 874 pages.....	\$6.00
THE ELEMENTS OF SOCIOLOGY, by Don Martindale and Elio D. Monachesi. 1951. 724 pages.....	\$5.00
ESSENTIALS IN INTERVIEWING, by Anne Ferguson Fenselson. 1951. 352 pages.....	\$4.00
INDUSTRIAL SOCIOLOGY, by Delbert C. Miller and William H. Form. 1951. 896 pages.....	\$6.00
PERSONALITY DEVELOPMENT, by James S. Slotkin. 1951. 401 pages.....	\$4.50
PREFACE TO EUGENICS, <i>Revised Edition</i> , by Frederick Osborn. 1951. 326 pages.....	\$4.00
RACIAL AND CULTURAL MINORITIES, by George Eaton Simpson and J. Milton Yinger. 1953. 773 pages.....	\$6.00
ROADS TO AGREEMENT, by Stuart Chase. 1951. 250 pages	\$2.75
THE SCOPE AND METHOD OF SOCIOLOGY, by Paul Hanly Furfey. 1953. 556 pages.....	\$5.00
SOCIAL DISORGANIZATION, <i>Third Edition</i> , by Mabel A. Elliott and Francis E. Merrill. 1950. 748 pages.....	\$5.00
THE SOCIOLOGY OF RURAL LIFE, <i>Third Edition</i> , by T. Lynn Smith. 1953. 680 pages.....	\$6.00
WILLOW RUN: <i>A Study of Industrialization and Cultural Inadequacy</i> , by Lowell Juilliard Carr and James E. Stermer. 1951. 406 pages.....	\$5.00

HARPER & BROTHERS 49 East 33d St., New York 16, N. Y.



new editions for fall classes

MARRIAGE AND THE FAMILY

By Ray E. Baber

Pomona College

McGraw-Hill Series in Sociology and Anthropology

A major revision intended to reestablish the book as a leader in the field, the text and all statistics have been brought up to date while retaining the essential purpose and scope. It offers an analysis of social interactions involved in finding a mate, adjusting to marriage problems, and achieving a satisfactory relationship between parent and child.

POPULATION PROBLEMS

By Warren S. Thompson

Miami University

McGraw-Hill Series in Sociology and Anthropology

Completely modernized, including the latest census data, this text offers discussions of the growth and change in population groups. Emphasis is placed upon the meaning of population change and trends in population development in terms of social questions. The text is written with great clarity and simplicity, understandable to all persons interested in current social developments.

Send for copies on approval

McGraw-Hill Book Company, Inc.

330 West 42nd Street

New York 36, N. Y.

Authors who lead the field

Hubert Bonner, Ohio Wesleyan University

Ernest W. Burgess, University of Chicago

Paul H. Landis, The State College of Washington

Harvey J. Locke, University of Southern California

Charles F. Marden, Rutgers University

Paul Meadows, University of Nebraska

Lowry Nelson, University of Minnesota

Wilbert S. Ray, Trinity College, Hartford, Conn.

James M. Reinhardt, University of Nebraska

Pitirim A. Sorokin, Harvard University

Herbert Hewitt Stroup, Brooklyn College

Carl C. Taylor, United States Dept. of Agriculture

John Barker Waite, Hastings College of Law

R. Clyde White, Western Reserve University

Arthur Evans Wood, University of Michigan

Kimball Young, Northwestern University

American Book Company

COLLEGE DIVISION

55 FIFTH AVENUE

NEW YORK 3, N. Y.

NEW BOOKS

An Introduction to Anthropology

Ralph Beals and Harry Hoijer

These two anthropologists meet their subject in a lively, easy-to-understand manner covering thoroughly both physical and cultural anthropology. Part One on physical anthropology centers around two themes: human evolution, and the nature and meaning of the racial divisions of mankind. The second part of the book emphasizes the concept of culture and the enormous variety of human culture. 1953. \$6.00

100 Years of Anthropology

T. K. Penniman

512 pp.

rev. second ed.

\$5.00

FORTHCOMING TEXTS

Urban Behavior

E. Gordon Erickson

Coming Winter 1953

**Toward A Unification of the
Sciences of Man**

*John P. Gillin, Howard Beacker, Talcott Parsons,
George P. Murdock, A. I. Hallowell, Theodore
Newcomb, and M. Brewster Smith*

Coming Spring 1954

The Macmillan Company

60 FIFTH AVENUE, NEW YORK 11

Announcing New Holt Books

MARRIAGE

Earl Lomon Koos, *University of Rochester*

A practical, concrete discussion of marriage. It aims to bring into focus current research findings which will aid the student to see himself and his prospective marital relationship in the clearest possible light. Illustrated with many case studies. 1953, 441 pp., \$4.00

SELECTED STUDIES IN MARRIAGE AND THE FAMILY

Robert F. Winch and Robert McGinnis, *Northwestern University*

An unusually careful selection of significant readings for courses in marriage and the family, distinguished for its continuity and coherence as well as for the scholarly excellence of its selections.

1953, 550 pp., \$4.00

EDUCATIONAL SOCIOLOGY: A Study of Child, Youth, School and Community

Florence Greenhoe Robbins, *The Ohio State University*

An inductive sociological study of the processes that orient the child to our culture—with emphasis on home interaction and on the relationship of the student and school to the community. 1953, 529 pp., \$4.75

MAN AND MODERN SOCIETY: Conflict and Choice in the Industrial Era

Karl De Schweinitz, *Northwestern University*

Kenneth W. Thompson, *University of Chicago*

With the collaboration of Paul K. Hatt, *late of Northwestern University*

The selections in this text for introductory courses in social science are organized and integrated to present a thorough analysis of modern society by leading social scientists. 1953, 843 pp., \$5.25

THE MODERN FAMILY

Robert F. Winch, *Northwestern University*

"Dr. Winch has done a very remarkable job of analyzing the 'modern family' within a consistent framework. It is not only one of the latest volumes on the market, but undoubtedly the finest."—*Simon Dinitz, The Ohio State University* 1952, 522 pp., \$4.25

HENRY HOLT AND COMPANY

383 Madison Avenue, New York 17

recent
publi-
cations

YOUR MARRIAGE AND THE LAW

By *Harriet F. Pilpel and Theodora Zavin*. A comprehensive, up-to-date book covering practically every phase of marriage and the law from the legal rights acquired at engagement, to the rights of divorced spouses. The authors point out inconsistencies, mistakes, and the various traps that have been inserted in the law by design or accident.
358 pp. \$3.00

HOW TO UNDERSTAND PROPAGANDA

By *Alfred McClung Lee*. A brief book designed to serve as a guide to propaganda for students of propaganda, for citizens generally who are objects of propaganda, and for the propagandists themselves.

281 pp. \$3.00

THE BLACK MARKET: A Study of White Collar Crime

By *Marshall B. Clinard*. This book is the first to describe and analyze the forces which produced the extensive black market in the United States during and after World War II.

392 pp. \$5.00

SOCIETY: An Introductory Analysis

By MacIver and Page... 697 pp. \$5.50

popular classics

MODERN AMERICAN SOCIETY: Readings in the Problems of Order and Change

By Davis, Bredemeier and Levy..... 734 pp. \$6.00

SOCIAL ORGANIZATION

By Robert H. Lowie..... 465 pp. \$4.50

INTRODUCTION TO CULTURAL ANTHROPOLOGY

By Robert H. Lowie..... 584 pp. \$5.00

RINEHART & CO.
232 madison ave. n. y. 16

WHEN YOU MARRY, Rev.

By EVELYN M. DUVALL; and REUBEN HILL,
The University of North Carolina

Reset and thoroughly revised in attractive format—with many lively new cartoons, charts, and tables. Two new chapters have been added—*Wedding Plans* and *Families in an Uneasy World*. Many new sections incorporate latest census data and research. *Illus.* 480pp. \$3.50. 1953

SOCIAL POLICIES IN THE MAKING, Rev.

By PAUL H. LANDIS,
The State College of Washington

A Dynamic View of Social Problems. Its positive, constructive approach to problems brings the needed stimulation and challenge to beginning students. Revised with up-to-date materials throughout. *Illus.* 638pp. \$5.00. 1952

THE AMHERST SERIES

PROBLEMS IN AMERICAN CIVILIZATION

Twenty-two volumes, each containing a selection of essays that set forth conflicting opinions on a present or a past controversial issue. *Each volume, \$1.10*

A selection:

The Turner Thesis concerning the Role of the Frontier in American History (*Taylor*)

Slavery as a Cause of the Civil War (*Rozwenc*)

Reconstruction in the South (*Rozwenc*)

Pragmatism and American Culture (*Kennedy*)

Industry-wide Collective Bargaining—Promise or Menace? (*Warne*)

Education for Democracy: The Debate over the Report of the President's Commission on Higher Education (*Kennedy*)

Immigration—An American Dilemma (*Ziegler*)

D. C. HEATH AND COMPANY

Sales Offices: NEW YORK 14

CHICAGO 16

SAN FRANCISCO 5

ATLANTA 3

DALLAS 1

Home Office: BOSTON 16

New Dryden Books

Research Methods in the Behavioral Sciences

Edited by Leon Festinger and Daniel Katz

Just published, this volume, by 18 acknowledged authorities currently engaged in research, sets down in systematic fashion the recent advances in research procedures and methods. Amply illustrated with examples drawn from current research, the book offers a detailed treatment of the major types of research settings as well as techniques. For advanced undergraduate and graduate courses.

Criminology: A Book of Readings

Clyde Vedder, Samuel Koenig, Robert Clark

"A valuable aid in a field of study where article and book reference material has reached mountainous proportions. I doubt if better selections could be made," writes one teacher of this new book. Another comments, "It is one of the few books of readings that can actually be used as a text."

Societies Around the World

I. T. Sanders, J. R. Schwendeman, R. S. Woodbury

These two volumes offer a stimulating introduction to the social sciences through a study of six contemporary societies, ranging from the relatively simple to the highly industrialized. Clyde Kluckhohn (*Harvard*) has called these books "an excellent work, pioneering in the field of introductory courses in integrated social sciences . . . comprehensive in content, attractive in format, beautifully illustrated, and sane in point of view." And Paul Cressey (*Wheaton*) commends the work's "fresh approach to an understanding of the social sciences. Its concrete, factual data on basic types of cultures . . . make the sort of actual 'real-life' material on which later, more theoretical courses could be built."

The Dryden Press New York 19, N. Y.

Announcing . . .

GROUP DYNAMICS

RESEARCH AND THEORY

Edited by Dorwin Cartwright, *Professor of Psychology and Director, Research Center for Group Dynamics, University of Michigan*; and Alvin Zander, *Associate Professor of Educational Psychology and Program Director, Research Center for Group Dynamics, University of Michigan*.

The first authoritative collection and summation of theory and outstanding research findings on the leadership, functions, actions, and patterns of small groups in all areas of our social structure.

By 51 scholars, basic data and the testing of theories concerning small groups, whether they be families, clubs, committees, work-teams, classrooms, military units, business and industrial meetings, or other familiar types of groups.

For use in courses in group dynamics, social psychology courses, and other courses in the social sciences. . . . For personal use by research workers and practitioners.

No. pages: xiv + 642

Price: \$6.00

SOVIET ECONOMIC GROWTH

CONDITIONS AND PERSPECTIVES

Edited by Abram Bergson, *Professor of Economics and Staff Member, Russian Institute, Columbia University*.

The results of intensive researches into the Soviet economy by 31 western scholars. . . . A symposium that traces in systematic detail the rates and patterns of growth of Russia's economy to date and appraises the prospects and potentials of the Soviet economy for the next two decades.

Suitable for basic and supplementary use in university courses on the Soviet economy and comparative economic systems . . . and for supplementary reading in courses on economic growth and development.

No. pages: x + 374

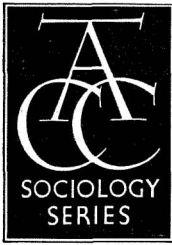
Price: \$6.00

For further information, write to:

Row, Peterson and Company

Evanston, Ill.

White Plains, N. Y.



Appleton-Century-Crofts SOCIOLOGY SERIES

Edited by John F. Cuber

Each volume in this series has been selected not only with the needs of university and college students in mind, but also on the basis of its contribution to knowledge. Each is the work of one or more recognized authorities in its particular subject.

Just Published

Ethnic Relations in the United States

Edward McDonagh

Eugene Richards

This text on race relations is organized in an original pattern which makes possible a comparative study of the positions of each of seven ethnic groups in the present-day social system of the United States. The groups are analyzed in terms of their educational, legal, social, and economic status. Supplementary readings of case histories and selections from the writings of outstanding authorities on the subject illustrate the major problems of each group. Throughout, the book is realistic and objective, and it is written in a concise and direct style. The latest 1950 census material is used wherever possible.

Large royal 8vo

408 pages

\$4.00

Other Volumes in the Series

SOCIOLOGY: A Synopsis of Principles

Second Edition

John Frank Cuber

**SOCIAL MOVEMENTS: An Introduction to Political
Sociology**

Rudolf Heberle

THE CRIME PROBLEM

Walter C. Reckless

Appleton-Century-Crofts, Inc.

35 West 32nd Street, New York 1, New York

And now the first reader in social stratification

CLASS, STATUS AND POWER

Edited by Reinhard Bendix and S. M. Lipset

This reader will be published at the end of August for fall text use. A complete table of contents is now available on request from The Free Press. \$6.00

READER IN PUBLIC OPINION AND COMMUNICATION: *Enlarged Edition*

Edited by Bernard Berelson and Morris Janowitz. During the two and one half years the first edition of this reader was in print, its usefulness was proved by its adoption at almost every university and college offering course in public opinion or communication. For the second edition the editors have added a new section of 103 pages on THE METHODS OF PUBLIC OPINION RESEARCH. These articles include: *How Surveys Are Made* by Eleanor E. Maccoby and Robert R. Holt, *The Uses of Panels in Social Research* by Paul F. Lazarsfeld, *Some Observations on Study Design* by Samuel A. Stouffer, *Planning a Mass-Observation Investigation* by F. G. Ferraby, *The Problem of Bias in Opinion Research* by Arthur Kornhauser, *Area Sampling—Some Principles of Sample Design* by Morris H. Hansen and Philip M. Hauser, *The Controversy Over Detailed Interviews—An Offer for Negotiation* by Paul F. Lazarsfeld, *The Interpretation of Survey Findings* by Daniel Katz, *The Pre-Election Polls of 1948* by the SSRC Committee on Analysis of Pre-Election Polls and Forecasts, *Public Opinion and Public Opinion Polling* by Herbert Blumer. \$5.50

Special supplement containing METHODS OF PUBLIC OPINION RESEARCH only, for the convenience of the owners of the first edition, \$1.50.

READER IN URBAN SOCIOLOGY

Edited by Paul K. Hatt and Albert J. Reiss, Jr. Used as the required text in more than one hundred urban courses and in then again as many as a second text. "The resultant collection is certainly a welcome alternative to the text books on urban sociology."—*Population Studies*. \$6.00

READER IN BUREAUCRACY

Edited by Robert K. Merton, Ailsa P. Gray, Barbara Hockey and Hanan C. Selvin. "This book meets an important need for students and research workers in the field. The literature on the subject has mushroomed in the last decade or so but is widely scattered."—*Rural Sociology*. \$5.00

The Free Press

Glencoe, Illinois

JAPANESE AMERICAN EVACUATION AND RESETTLEMENT

I. THE SPOILAGE By Dorothy S. Thomas and R. S. Nishimoto. The social history of that segment of Japanese Americans who were stigmatized as "disloyal." Traces the course of that minority from law-abiding citizens to people without a legal basis for existence.

xx + 388 pages 1946 \$3.75

II. THE SALVAGE By Dorothy S. Thomas with the assistance of Charles Kikuchi and James M. Sakoda. Focuses attention upon the evacuee migration from government camps to the Middle West and East during 1943 and 1944, with detailed life histories of fifteen resettlers.

xii + 638 pages 1952 \$7.50

SOLDIER GROUPS AND NEGRO SOLDIERS

By David G. Mandelbaum. A two-part study of the soldier and his group of comrades, and of the effects of Negro segregation.

160 pages 1952 \$2.75

REMOVAL AND RETURN

By Leonard Bloom and Ruth Riemer. Examines the socio-economic effects of the war on Japanese Americans, comparing their prewar with their postwar status. Measures their economic losses and offers a basis for evaluating their claims against the government.

x + 260 pages 1949 \$3.75

AGRARIAN SOCIALISM

By S. M. Lipset. Relates the activities of the CCF in Saskatchewan to the structure of the community, the party framework, and the socio-economic problems the CCF faces.

xx + 316 pages 1950 \$4.50

SELECTED WRITINGS OF EDWARD SAPIR IN LANGUAGE, CULTURE, AND PERSONALITY

Edited by David G. Mandelbaum.

xvi + 618 pages 2d printing, 1951 text, \$5.00; trade, \$6.50

University of California Press
Address: Berkeley 4, California



NATIONALISM AND SOCIAL COMMUNICATION

By KARL W. DEUTSCH, *The Massachusetts Institute of Technology.*

A penetrating structural and quantitative analysis of a fundamental force governing the destinies of peoples. The manuscript for this volume was awarded the Sumner Prize in Political Science from Harvard University in 1951. It cuts across the various fields of social sciences and paves the way for prediction and measurement in this important area. A Technology Press book. M.I.T. July, 1953. Approx. 272 pages. Prob. \$5.00.

SAMPLE SURVEY METHODS AND THEORY

By MORRIS H. HANSEN, WILLIAM N. HURWITZ, *both of the Bureau of the Census*, and WILLIAM G. MADOW, *The University of Illinois.*

"Here, at long last, is a general purpose work on sampling theory and method by men whose experience, resources and contributions are unsurpassed anywhere in the world . . . the most modern and effective methods of sample design, estimation procedures, and the calculation of sampling errors."—Philip M. Hauser, *University of Chicago.* WILEY PUBLICATIONS IN STATISTICS. Walter A. Shewhart, *Editor.* July, 1953.

Vol. I: Methods and Applications. 638 pages. Prob. \$8.50.

Vol. II: Theory. Approx. 328 pages. Prob. \$7.00.

SAMPLING TECHNIQUES

By WILLIAM G. COCHRAN, *Johns Hopkins University.* This is a clear, concise, and systematic account of sampling theory and its application in sample surveys. Emphasis is on principles but sufficient illustrations from survey data are given to show how theory is applied in actual practice. One of the Wiley Publications in Statistics. Walter A. Shewhart, *Editor.* 1953. 330 pages. \$6.50.

PRINCIPLES OF HUMAN RELATIONS

Applications to Management

By NORMAN R. F. MAIER, *University of Michigan.* Drawing on his wide practical knowledge of human relations, the author outlines effective management techniques, with emphasis on group decision. The book presents techniques and theory that have been tested and proved successful in actual industrial practice. 1952. 474 pages. \$6.00.

MANPOWER RESOURCES AND UTILIZATION

Principles of Working Force Analysis

By A. J. JAFFE, *Columbia University*; and CHARLES D. STEWART, *U. S. Department of Labor.* This ground-breaking volume brings together a new body of information about the labor force, and ". . . is certainly the most comprehensive treatment of the 'labor force' yet produced. It has both substantive and methodological significance for the social sciences. . . ."—*The American Journal of Sociology.* 1951. 532 pages. \$6.50.

Send today for on-approval copies

JOHN WILEY & SONS, Inc. 440 Fourth Ave., New York 16, N. Y.

A one-volume student library for introductory courses in sociology.

OUTSIDE READINGS IN SOCIOLOGY

Edgar A. Schuler, *Wayne University*, Duane L. Gibson, *Michigan State College*,
Maude L. Fiero, *Wayne University*, and Wilbur B. Brookover,
Michigan State College

"An exceedingly useful collection for almost any introductory course."
Charles H. Page, *Smith College*

"Your excellent volume permits the modern student, particularly the student in the small college, to master a narrow selection of choice readings."
C. W. Topping, *The University of British Columbia*

"The materials included are so numerous and cover so wide a range of content, viewpoint, and methodology that almost any teacher can select abundant supplementary reading to fit 'his' course."
John F. Cuber in the *American Sociological Review*

1952 • 884 pages • Hard cover • \$2.95

A highly-praised successor to the author's earlier text.

THE AMERICAN FAMILY

Ruth Shonle Cavan, *Rockford College*

"An excellent book, well organized, well written, and well documented."
Stuart A. Queen, *Washington University*

"The organization of the book into four main divisions is logical and meaningful. Part II is somewhat unique in its extended treatment of family life in the three social classes. This helps provide a sociological frame for Part III, which is the real body of the book. This 'Cycle of Family Life' extends quite properly from adolescence (with its first stirrings of heterosexual interests) through dating, courtship, marriage, adjustment, parental responsibilities, and post-parental years."

Ray E. Baber, *Pomona College*

"Sane, constructive, wholesome, readable, teachable—a real contribution to the subject and to education in this field."

Hornell Hart, *Duke University*

"Its orientation to class differentials very definitely describes the condition of families in this region."
J. W. Gladden, *University of Kentucky*

1953 • 658 pages • 58 figs. • 35 tables • \$5.00

THOMAS Y. CROWELL COMPANY

432 Fourth Avenue •

New York 16, N. Y.