

# RETHINKING SOCIAL MOVEMENTS: CAN CHANGING THE CONVERSATION CHANGE THE WORLD?



## Greetings from ASA President Ruth Milkman

Please join us this August in the vibrant city of Seattle. Although famously rainy in other seasons, Seattle is typically sunny and bright in August, offering a wonderful setting for reuniting with old friends and colleagues at the ASA Annual Meeting. Seattle is also an ideal site for the theme I chose for this year's meeting: "Rethinking Social Movements: Can Changing the Conversation Change the World?" Prefiguring Bernie Sanders' national presidential campaign, Seattle's voters elected a socialist – and former Occupy Seattle activist – to the city council in 2013. It was also the first U.S. city to raise its minimum wage to \$15 an hour, reflecting the city's history of progressive politics and the dynamism of its local labor movement.

Friday night's opening plenary features Kshama Sawant, Seattle's Socialist city council member. She will be joined by Amy Goodman, host of Democracy Now, and Walden Bello, a sociologist and former member of the House of Representatives of the Philippines. All three will reflect on the "Battle of Seattle," as the massive protests against the World Trade Organization meeting held there in 1999 have come to be known. Please come to hear them discuss the enduring legacy of those protests as well as the current political scene in Seattle. I hope you will also join us for the welcoming reception at 9:00 PM on Friday.

The next plenary, on Saturday 12:30 PM, focuses on the Black Lives Matter movement, which has done so much to raise awareness of police brutality and racism. It features the legendary Rev. William Barber II of the NAACP, who has led the "Moral Mondays" movement in North Carolina since 2013. Joining him on the panel is Kimberlé Crenshaw, the well-known theorist of intersectionality and law professor at Columbia University. Both of these speakers were actively engaged in the issues animating the Black Lives Matter movement long before it swept the nation, and will share their reflections on that movement's roots, achievements, and future prospects.

The next plenary, on Saturday evening, interrogates the wider social movement landscape and the new cycle of protest that has emerged in the U.S. and worldwide over the past five years, in the aftermath of the Arab Spring and Occupy Wall Street. Former ASA President and renowned social movements scholar Frances Fox Piven will be joined by BBC reporter Paul Mason, who has written extensively about the global wave of protests of the post-2011 period, and Sarah Jaffe, a journalist at the Nation Institute and the author of a new book on U.S. social movements since Occupy Wall Street.

The final plenary, on Monday at 12:30 PM, focuses on the 21st century U.S. labor movement, featuring four extraordinary strategists. Please come hear Stephen Lerner, best known as the architect of the Justice for Janitors movement; Seattle-based David Rolf who led the Fight for \$15 there and nationally; Ai-Jen Poo who directs the National Domestic Workers Alliance; and Erica Smiley, Organizing Director of Jobs with Justice. They will reflect on the challenges facing traditional unions as well as ongoing efforts to build labor-community alliances.

Thematic panels on a rich variety of other topics related to social movements round out the program, along with a wide array of Invited, Regular, and Section Sessions and Workshops on other sociological topics. Please take the time to survey the program. And enjoy your visit to Seattle!

**Ruth Milkman**  
ASA President  
Chair, 2016 Program Committee  
City University of New York-Graduate Center

## MAJOR PLENARY SESSIONS

### Opening Plenary Session

**Beyond the Battle of Seattle**

Friday, August 19, 7:00 – 9:00 PM

Organizer and President: Ruth Milkman, City University of New York-Graduate Center

Panel: Walden Bello, University of Philippines-Diliman  
Amy Goodman, Democracy Now  
Kshama Sawant, Seattle City Council

### Plenary Session

**Protesting Racism**

Saturday, August 20, 12:30 – 2:10 PM

Organizer: Ruth Milkman, City University of New York-Graduate Center

President: Aldon Morris, Northwestern University  
Panel: Kimberlé Crenshaw, Columbia University  
Reverend William Barber, II, NAACP

### Plenary Session

**A New Cycle of Protest?**

**Occupy Wall Street and Beyond**

Saturday, August 20, 8:00 – 9:30 PM

Organizer and President: Ruth Milkman, City University of New York-Graduate Center

Panel: Frances Fox Piven, City University of New York-Graduate Center  
Paul Mason, British Broadcasting Corporation  
Sarah Jaffe, Dissent Magazine

### Hear Ruth Milkman's Address and Honor 2016 Award Recipients

On Sunday, August 21, 4:30 PM, ASA members will celebrate the presentation of the nine major ASA awards to colleagues who have done outstanding sociological work.

### ASA Awards Ceremony and Presidential Address

Sunday, August 21, 4:30 – 6:10 PM

President: Barbara Jane Risman, University of Illinois-Chicago

### Plenary Session

**The 21<sup>st</sup> Century U.S. Labor Movement**

Monday, August 22, 12:30 – 2:10 PM

Organizer and President: Ruth Milkman, City University of New York-Graduate Center

Panel: Stephen Lerner, Georgetown University  
David Rolf, Service Employees International Union  
Ai-Jen Poo, National Domestic Workers Alliance  
Erica Smiley, Jobs with Justice



111<sup>TH</sup> ASA ANNUAL MEETING  
AUGUST 20–23, 2016

WASHINGTON STATE CONVENTION CENTER AND SHERATON SEATTLE HOTEL  
RETHINKING SOCIAL MOVEMENTS: CAN CHANGING THE CONVERSATION CHANGE THE WORLD?  
SEATTLE, WASHINGTON

## MOMENT OF REMEMBRANCE

At the beginning of the Presidential Plenary, there will be a "Moment of Silence" to remember those members of the profession who died during the past year. Names submitted to *Footnotes* since last year's Annual Meeting will be listed in the *Final Program*. If you know of names that should be on this list but may not have been sent to ASA, please contact Meeting Services (202-383-9005, x305; meetings@asanet.org).

### Awards Ceremony

2016 Dissertation Award  
 2016 Jessie Bernard Award  
 2016 Cox-Johnson-Frazier Award  
 2016 Award for Public Understanding of Sociology  
 2016 Excellence in the Reporting of Social Issues  
 2016 Distinguished Career Award for the Practice of Sociology  
 2016 Distinguished Contributions to Teaching Award  
 2016 Distinguished Book Award  
 2016 W.E.B. DuBois Award for Distinguished Scholarship

### Presidential Address

**President:** Barbara Jane Risman, University of Illinois-Chicago  
**Presidential Address:** "A New Political Generation: Millennials and the Post-2008 Cycle of Protest." Ruth Milkman, City University of New York-Graduate Center  
 All attendees are invited to this plenary session and to the Honorary Reception afterwards to honor President Milkman and the 2016 award recipients.

### ASA Business Meeting

The ASA Business Meeting is an opportunity for members of the Association to discuss important issues facing the discipline and profession. All meeting attendees are invited to join ASA officers, Council members, and Executive Office staff for continental breakfast and discussion at the ASA Business Meeting on Tuesday, August 23, 7:00-8:15 AM.

Members seeking to present formal resolutions should be prepared to provide background materials on the issue to be discussed. Contact ASA Governance staff at the ASA Executive Office for guidelines (202-383-9005 x327; governance@asanet.org). The deadline for submission of resolutions and background materials is **Wednesday, July 13, 2016**.

### 24th Annual Research Support Forum

ASA is pleased to announce the 24th Annual Research Support Forum featuring 20 special sessions and workshops on research funding, data resources, and discussion of important science policy issues. Look for the following sessions to navigate your way through this year's program and focus on researchers and research issues.

1. **Course.** MAXQDA 12 for Windows and Mac Qualitative Data Analysis (QDA) Software Training
2. **Course.** Qualitative Comparative Analysis and Fuzzy Sets
3. **Policy and Research Workshop.** 50 Years of the National Longitudinal Studies – A Workshop for New and Returning Users
4. **Policy and Research Workshop.** Big Data for Social Science Research: Theoretical Framing, Analytical Techniques and Emerging Research Standards
5. **Policy and Research Workshop.** European Research Council: Funding for U.S. Sociologists (and Elsewhere!) Willing to Explore Ideas or Territories Never Explored Before
6. **Policy and Research Workshop.** How to Write a Successful Proposal for the Fund for the Advancement of the Discipline (FAD)
7. **Policy and Research Workshop.** Introduction to LIS – A Resource for Cross-National Research on Poverty, Inequality, Employment, and Wealth
8. **Policy and Research Workshop.** National Science Foundation: Proposal Development, Merit Review and Funding Opportunities
9. **Policy and Research Workshop.** Panel Study of Income Dynamics Workshop
10. **Policy and Research Workshop.** Qualitative Research: Funding Opportunities and Review at the National Science Foundation
11. **Policy and Research Workshop.** Seeking Research Funding from the National Institutes of Health (NIH)
12. **Policy and Research Workshop.** Using the Wisconsin Longitudinal Study
13. **Policy and Research Workshop.** What Investigators Should Know about Grant-Seeking from Private Foundations
14. **Policy and Research Workshop.** What You Need to Know about the New "Common Rule" (sponsored by COPE)
15. **Professional Development Workshop.** Doing Reproducible Quantitative Social Science (co-sponsored with COPE)
16. **Professional Development Workshop.** Getting Beyond "Other": Quantitative Analysis Using Detailed Demographic Categories
17. **Professional Development Workshop.** How (and Why) To Do Corporate Research
18. **Professional Development Workshop.** IRBs and Responsible Conduct of Research with Children, Inmates and other Potentially Sensitive Groups
19. **Poster Session.** Research Funding Opportunities and Data Resources
20. **Special Session.** ASA Science Policy. U.S. Government Interagency Federal Forums and Social Science Policy

## A Marketplace of Ideas

The heart of the Annual Meeting is the exchange of scholarly ideas in sessions of all types and formats. Enjoy a sampling of the sociological work being done by the "best and the brightest." The 2016 Program Committee crafted a set of topics to which colleagues from around the world submitted papers and roundtable proposals. Now this work comes to the Annual Meeting.

**Regular Sessions** feature research papers submitted in response to the 2016 Call for Papers. These papers cover the spectrum of sociological inquiry and are organized into approximately 200 sessions.

**Open Refereed Roundtables** feature two to four paper presentations at each table, with a table president to coordinate presentations and discussion. Two large general roundtable sessions were created on a variety of themes.

**Informal Discussion Roundtables** bring together small groups of people interested in discussing

specific topics. One informal discussion session has been organized to enhance scholarly networking and exchange of emerging ideas.

**Poster Sessions** allow meeting attendees to visually see the results of sociological research and engage in face-to-face conversation with authors. In addition, there are specialized "informational" posters on Research Funding Support and Data Resources, plus a Graduate Programs in Sociology resource area. All poster areas are open throughout the meeting during Exhibit Hall hours.

## ASA EVENTS AT A GLANCE

FRIDAY AUGUST 19	8:00 AM	Chair Conference on Studying Sociology/Doing Sociology: Connecting the Dots to Meaningful Employment Outcomes for Majors*
	10:00 AM	Course on Reframing Immigration and Immigration Reform: A Workshop on Strategic Communications (presented by The Frameworks Institute)*
	10:00 AM	Course on Creating Opportunities for Student-Facilitated Discussions in the Classroom and the Broader Community
	10:00 AM	Course on MAXQDA 12 for Windows and Mac Qualitative Data Analysis (QDA) Software Training
	10:00 AM	Course on Qualitative Comparative Analysis and Fuzzy Sets
SATURDAY AUGUST 20	12:00 PM	ASA Social Media Pre-Conference*
	1:30 PM	Course on Incorporating American Community Survey and U.S. Census Data into Undergraduate Courses*
	1:30 PM	Directors of Graduate Studies Conference on Excellence in Graduate Student Teacher Training: Practical Insights for Graduate Programs and Their Leaders*
	2:00 PM	Course on Reframing Immigration and Immigration Reform: A Workshop on Strategic Communications (presented by The Frameworks Institute)*
	7:00 PM	Opening Plenary: Beyond the Battle of Seattle
	9:00 PM	Welcome Reception
	8:30 AM	Concurrent program sessions and committee meetings
	10:30 AM	Concurrent program sessions and committee meetings
	10:30 AM	Orientation for First-time Meeting Attendees
	12:30 PM	Plenary on Protesting Racism
SUNDAY AUGUST 21	2:30 PM	Concurrent program sessions and committee meetings
	2:30 PM	Graduate Programs in Sociology Poster Session
	4:30 PM	Concurrent program sessions and committee meetings
	6:30 PM	Student Reception
	6:30 PM	Section Receptions
	6:30 PM	Activities of Affiliates and Other Groups
	7:00 PM	Reception for Scholars with International Research & Teaching Interests
	8:00 PM	Evening Plenary on A New Cycle of Protest? Occupy Wall Street and Beyond
	9:30 PM	Departmental Alumni Night (DAN)
	7:00 AM	Community College Faculty Bagel Breakfast
MONDAY AUGUST 22	8:30 AM	Concurrent program sessions and committee meetings
	10:30 AM	Concurrent program sessions and committee meetings
	10:30 AM	Special Science Policy Session
	12:30 PM	Concurrent program sessions and committee meetings
	1:00 PM	Funding Opportunities and Data Resources Poster Session
	2:30 PM	Concurrent program sessions and committee meetings
	4:30 PM	ASA Awards Ceremony and Presidential Address
	6:30 PM	Honorary Reception
	8:00 PM	Just Desserts! A Carla B. Howerly Teaching Enhancement Grant Program Benefit Reception*
	8:00 PM	Activities of Affiliates and Other Groups (and university-sponsored receptions)
TUESDAY AUGUST 23	9:30 PM	Minority Fellowship Program (MFP) Benefit Reception*
	8:30 AM	Concurrent program sessions and committee meetings
	10:30 AM	Concurrent program sessions and committee meetings
	12:30 PM	Plenary on The 21st Century U.S. Labor Movement
	2:30 PM	Concurrent program sessions and committee meetings
	4:30 PM	Concurrent program sessions and committee meetings
	6:30 PM	Section Receptions
6:30 PM	Activities of Affiliates and Other Groups	
7:00 AM	ASA Business Meeting	
8:30 AM	Concurrent program sessions and committee meetings	
10:30 AM	Concurrent program sessions and committee meetings	
12:30 PM	Concurrent program sessions and committee meetings	
2:30 PM	Concurrent program sessions and committee meetings	

\*preregistration and fee payment required

## Presidential Panels

The Program Committee created a session category to highlight topics of special interest to the ASA President. Two sessions dealing with crucial social and political issues were created under this umbrella.

- Climate Change and Social Movements
- ASA Town Hall Meeting

## Special Sessions

The category of "Special Sessions" encompasses member suggestions for invited panels and permits the Program Committee to co-sponsor sessions with sister societies. These sessions may be on topics that further investigate the meeting theme or they may focus on other timely issues. They are listed below:

- 20 Years since Welfare Reform
- Attack on Public Education K-12
- Attacks on Higher Education
- Behind the Scenes: A Discussion of Applying for and Being an Editor of an ASA Journal
- Changing the Conversation – The Stigma of "Difference," Connectedness, and the College Toolbox Project
- College Affordability
- Contributions of the Spivack CARI Awardees of the Last 20 Years
- Creativity and Sociology
- Critically Evaluating Religious Diversity (co-sponsored with Association for the Sociology of Religion)
- The Integration of Immigrants in the United States: A National Research Council Report
- Intersecting Identities (co-sponsored with Association for the Sociology of Religion)
- Movements Matter: Connecting the Local and Global in Addressing Violence Against Women
- Nones and the Northwest (co-sponsored with Association for the Sociology of Religion)
- The Obama Presidency
- Punitive Policing, Mass Incarceration, and Community Responses
- Rethinking Cannabis Policy Reform Movements
- Rethinking Slavery
- Revitalization, Relocation, and the Right to the City
- Sexual Harassment in Sociological Fieldwork
- Sociology of Community Gardens
- Teaching Online: Is the Movement in Higher Education Toward Online Teaching Right for Sociology?
- U.S. Health Care Policy and Reform
- Visual Sociology and Inequality
- Water: Whose Crisis?
- What Social Movements Theories Can Tell Us about Nonreligion (cosponsored with Association for the Sociology of Religion)
- Whose Knowledge? Who Benefits?

Refer to the online searchable program for details on all sessions and events on this year's program roster. See the ASA website at [www.asanet.org/AM2016/am\\_2016.cfm](http://www.asanet.org/AM2016/am_2016.cfm).



Photo Credit: Oscar & Associates

## Thematic Sessions

Thematic Sessions provide abundant opportunities to think in-depth about this year's meeting theme, "Rethinking Social Movements: Can Changing the Conversation Change the World?" Forty-six sessions delve into important social and political issues, explore international and interdisciplinary viewpoints, and speculate on different visions of future possibilities. They are listed below by title:

- Allies and Obstacles: Parents of Children with Disabilities and the Disability Rights Movement
- Challenging Economic Inequality: Leveraging Cracks in the Structures of Business Power
- Changing Our Minds: Public Opinion in the 21<sup>st</sup> Century
- Changing the Academy: Comparing Efforts of Feminists Cross-Nationally
- Collective Action to Address Health: The Case of HIV/AIDS
- Community Organizing as Movement Building: Reflections on a Field Transformed
- Constructing the Right to Health
- Corporate Social Responsibility: Are Businesses Capable of Self-Regulation?
- Digital Natives and Online Politics
- Fighting Walmart: From Local Contests to Global Campaigns?
- Gender Equity and Social Policy: Solving Work/Family Conflicts
- History from the Bottom Up in the Middle East?
- Indigenous Movements in the 21<sup>st</sup> Century
- Journalism and Social Change
- One Year after Obergefell v. Hodges: The Case of Marriage Equality
- Precarity and Polanyi: Transforming Labor, Citizenship and the Neoliberal State
- Progressive Cities
- Psychiatry and Social Movements: Persistent Questions and New Directions
- Race and Social Movements: Which Way Forward?
- Reconceptualizing the Civil Sphere
- Re-Imagining Movements for Environmental and Climate Justice: Can They Change Everything?
- Rethinking Black Power Movement Outcomes
- Rethinking Civil Rights Movement Outcomes
- Right-Wing Movements and Inequality: Looking to the Future
- Riots, Protest, and Social Movements
- Science, Movements, and Social Inequality
- Sexuality and Social Change
- Silos or Synergies? Can Transnational Social Movements Connect across Issues?
- Social Movements and the 2016 Presidential Election
- Social Movements and the News Media
- Social Protests in China
- Strikes and Labor Politics in Comparative Perspective
- The Broken Spring: The Arab Uprisings and Their Aftermaths
- The Immigrant Rights Movement, Ten Years after the 2006 Marches
- The New Politics of Participation
- The Politics of Paid Family Leave in the 21<sup>st</sup> Century U.S.
- The Worlds of Domestic Work: Regulation and Organization
- Transgender Identities, Institutions, and Social Change
- Transnational Feminism
- Transnational Immigrant Movements
- U.S. Feminism in the 21<sup>st</sup> Century
- Unions in Higher Education: Vision, Reality, Analysis
- Urban Protest in the Global South
- Wealth, Inequality, and the Future of American Politics
- What Do Workers Need to Live a Good Life? Rethinking Work/Family Conflict in a Neoliberal Age
- When Changing the Conversation Matters: Lessons from Southern Europe



Photo Credit: Howard Frisk Photography

## ADD VALUE TO YOUR MEETING BY SIGNING UP FOR ONE OF THESE ADDITIONAL EVENTS

### August 19 Courses and Pre-Conference

This educational component provides an opportunity for attendees to get in-depth training in a special subject area. Courses are intensive sessions led by expert faculty who have prepared a comprehensive curriculum to engage participants at all levels. Registrants will receive certificates documenting their participation and completion of a course.

This year six courses will be held prior to the first full day of program sessions. Attendance limits and fees are noted below, and prepaid registration is required. Reservations are accepted in order of receipt in the ASA Executive Office. **Fees are non-refundable after Wednesday, July 13.**

#### Reframing Immigration and Immigration Reform: A Workshop on Strategic Communications (presented by The Frameworks Institute)

Friday, August 19, 10:00 AM - 12:30 PM

Fee: \$75 Attendance Limit: 30

Leaders: Moira O'Neil and Marisa Gerstein Pineau, The Frameworks Institute

#### Creating Opportunities for Student-Facilitated Discussions in the Classroom and the Broader Community

Friday, August 19, 10:00 AM - 5:30 PM

Fee: \$75 Attendance Limit: 40

Leader: Suzanne R. Goodney Lea, Interactivity Foundation

#### MAXQDA 12 for Windows and Mac Qualitative Data Analysis (QDA) Software Training

Friday, August 19, 10:00 AM - 5:30 PM

Fee: \$75 Attendance Limit: 25

Leader: Neville Li, MAXQDA

#### Qualitative Comparative Analysis and Fuzzy Sets

Friday, August 19, 10:00 AM - 5:30 PM

Fee: \$75 Attendance Limit: 40

Leader: Charles C. Ragin, University of California-Irvine

#### Incorporating American Community Survey and US Census Data into Undergraduate Courses

Friday, August 19, 1:30 - 5:30 PM

Fee: \$75 Attendance Limit: 25

Leaders: John Paul DeWitt, University of Michigan; Jill Bouma, Berea College; Katherine R. Rowell, Sinclair Community College; and Esther Isabelle Wilder, City University of New York-Lehman College

#### Reframing Immigration and Immigration Reform: A Workshop on Strategic Communications (presented by The Frameworks Institute)

Friday, August 19, 2:30 - 4:30 PM

Fee: \$75 Attendance Limit: 30

Leaders: Moira O'Neil and Marisa Gerstein Pineau, The Frameworks Institute

#### Social Media Pre-Conference

Friday, August 19, 12:00 - 5:30 PM

Fee: \$50

The 2016 Annual Meeting will offer a special pre-conference aimed at increasing knowledge of social media and strategies for using these tools in sociological work. The Social Media Pre-conference is organized by Dustin Kidd (Temple University) and Tressie McMillan Cottom (Virginia Commonwealth University).

The Pre-conference will take place on Friday, August 19 as part of the pre-convention program activities, at a charge of \$50 for registered attendees of the Annual Meeting. Those interested in attending must register in order to reserve their space.

Topics covered include:

- Creating a Social Media Strategy
- Twitter for Academics
- Framing Social Research on Social Media
- Social Media Techniques for the Classroom



Photo Credit: Oscar & Associates

### Exhibits

Plan your schedule now to include several visits to the ASA 2016 Exhibit Hall to browse through the latest publications, explore current computer hardware and software, chat with representatives of statistical bureaus, and meet the editor of your next publication. More than 50 booths will display resources to help you plan courses, undertake research, and keep your sociological skills up to date.

The ASA Exhibits will be located in Hall A at the Washington State Convention Center. Exhibits will be open to meeting registrants wearing ASA 2016 meeting name badges during the following hours:

Saturday, August 20, 2:00 - 6:00 PM

Sunday, August 21, 9:00 AM - 4:00 PM

Monday, August 22, 9:00 AM - 5:00 PM

Tuesday, August 23, 9:00 AM - 1:00 PM

The location of the Exhibits offers excellent accessibility for meeting attendees. Always one of the most popular activities at the Annual Meeting, Exhibits offer variety, convenience, and an opportunity to discover current trends in sociological publishing, information processing, and services. It will be a central gathering place, too. Attendees will be able to take advantage of greater networking opportunities at the Exhibit Hall. The hall will feature the ASA Cybercafé and the ASA Store. The hall will have seating areas for gathering with colleagues.

#### Exhibitors Scheduled to Attend (as of May 9, 2016)

Association Book Exhibit	Media Education Foundation	SAGE Publishing
Brill	Michigan State University Press	Springer
Canadian Scholars' Press (CSPI)	Minnesota Population Center	StataCorp LP
Columbia University Press	National Longitudinal Surveys	Temple University Press/ University of North Carolina Press
Cornell University Press	New York University Press	Transaction Publishers
Duke University Press	Oxford University Press	University of California Press
Emerald Group Publishing	Palgrave Macmillan	University of Chicago Press
Harvard University Press	Panel Study of Income Dynamics	University of Minnesota Press
Health and Retirement Study	Penguin	Vanderbilt University Press
ICPSR-University of Michigan	Polity	VERBI Software
JSTOR	Princeton University Press	W.W. Norton
Knopf Doubleday	Project Management Institute	Westview Press
Leibniz Institute for Educational Trajectories	Random House	Wiley
Lexington Books	Routledge	
Lynne Rienner Publishers	Rowman & Littlefield	
Macmillan	Russell Sage Foundation	
	Rutgers University Press	



Photo Credit: Oscar & Associates

### RENEW BEFORE REGISTERING...

Renew your ASA membership online at [www.asanet.org/members/joinasa.cfm](http://www.asanet.org/members/joinasa.cfm) before you register for the Annual Meeting in order to qualify for the lower registration fees available to Members.



## Special Activities for Department Leaders

The Annual Meeting affords a special opportunity for ASA to work with leaders of the profession, especially Department Chairs, Directors of Graduate Study, and Undergraduate Advisers.

### ASA Department Chairs Conference. Studying Sociology/Doing Sociology: Connecting the Dots to Meaningful Employment Outcomes for Majors

Friday, August 19, 8:00 AM – 5:30 PM

Fee: \$150 for Department Affiliates; \$180 Non-Affiliates.

Larger student loan burdens, the continuing effects of the Great Recession, and a more diverse student body mean that students (and their parents) are considering the employment implications of their college choices even before setting foot on campuses. The proportion of first-year students who say their decisions about where to go to college were influenced by the types of jobs an institution's graduates are getting is at an all-time high (HERI 2016). The U.S. Department of Education's "College Scorecard" includes post-graduation earnings for institutions, and some institutions are reporting alumni's earnings data at the program level. Departments need not view this increased emphasis on employment outcomes from the perspective of the trend toward vocationalism. Employer surveys suggest that graduates need have both specific skills and broad knowledge to be competitive on-the-job market (AAC&U 2014). They need to think critically, work through complex problems, communicate effectively, work in a multicultural context, handle ambiguity, and contribute to innovation (AAC&U 2013).

This is a good approach for sociology in which there is notable correspondence between the concepts and skills sociology programs teach and the learning outcomes today's employers report they are seeking. But many sociology programs still need to become more effective in highlighting these connections and in helping students both to develop a vocabulary that describes their sociological knowledge and skills and to demonstrate their experience applying those skills to real world problems. Our students can be well positioned to graduate into positions in the workforce that both make use of their sociological skills and help to improve the communities in which they live and work.

This year the ASA Department Chairs Conference will explore the ways departments can better demonstrate the links between the major and employment without losing their grounding in liberal learning; help students develop fluency in describing the real-world applicability of their major; and consider how to facilitate opportunities for students to gain experience in responding to complex real-world problems.

In addition to plenary presentations and roundtable discussions linked to this year's Chairs Conference theme, the conference will also help department chairs—both new and experienced—develop their leadership and management skills in core areas of responsibility, such as running effective department meetings, managing budgets, conducting faculty performance reviews, evaluating non-traditional scholarship, responding to MCAT 2015, preparing for program review, and strategies for course scheduling to maximize student learning. Concurrent roundtable sessions during the conference are designed to allow Chairs from the full range of academic institutions—from PhD-granting to BA-liberal arts—to find topics in each session that are appropriate in their context.

### Directors of Graduate Studies Conference. Excellence in Graduate Student Teacher Training: Practical Insights for Graduate Programs and Their Leaders

Friday, August 19, 1:30 – 5:30 PM

Fee: \$60 for Department Affiliates; \$80 Non-Affiliates.

A recent study of sociology graduate programs in Teaching Sociology found that 94 percent of students are engaged in teaching at some point in their graduate careers (Blouin and Moss 2015). For graduate students who go on to employment in academic settings—whether in research-intensive institutions or community colleges—nearly all will have positions that include evaluation of their performance as teachers. Institutions of higher education across the board are increasing attention to effective teaching and its relationship to positive student learning outcomes in both hiring and evaluating faculty, regardless of the degree to which they emphasize scholarship. Yet teacher training is not ubiquitous in graduate training. While some graduate departments have decades of experience providing programs explicitly designed to develop teaching skills, others rely—at best—on informal channels to prepare their graduates for this professional responsibility.

This year's Director of Graduate Studies (DGS) Conference will focus on graduate student teacher training in sociology PhD and MA programs. The conference will include information and practical advice for departments that do not currently have graduate student teacher training programs, as well as those seeking to strengthen existing programs. Presenters will provide insights on the advantages and challenges of a range of graduate student teacher training approaches, including discussions about formal and informal training, innovations such as graduate student peer mentors, assessment of such programs, as well as nuts and bolts guidance for their daily management. Discussion also will include how emergent issues, such as new technologies, online courses and programs, and responding to the needs of students from diverse countries and cultures, can and should influence the content and form of graduate student teacher training.

The conference will include plenary presentations, panel discussions, and roundtable sessions and will give DGS from all department types, including MA and PhD programs, the opportunity network with peers from similar departments. The conference will include plenary presentations, panel discussions, and roundtable sessions, and will give DGS from all department types the opportunity to gather with peers from similar departments, with ample time for discussion among participants. Additionally, participants will gain insights on handling the regular business of being the DGS, from time management to administration of exams and grad student socialization to career advising.

## Workshops

The Annual Meeting offers opportunities for professional development and training across research, teaching, careers, and other important professional issues. From teaching challenges to research issues to career advice and more, the 2016 Program features a robust selection of workshops.

Workshops are open to all meeting registrants. An overview of workshop topics is listed below. Workshop schedules, leaders, and descriptions are posted in the online searchable schedule on the ASA website: [www.asanet.org/AM2016/am\\_2016.cfm](http://www.asanet.org/AM2016/am_2016.cfm)

### Departmental Management and Leadership Workshops

- Adjunct, Contingent, and Part-Time Faculty: Creating Department Structures to Support Faculty and Promote Student Learning
- Improving Department Climate: Concrete Steps Based on Evidence
- Preparing for Successful Program Review
- Step-by-Step: Creating Inclusive Departments

### Professional Development Workshops

- A Conversation about Careers: Sociologists in a Changing Economic Landscape
- Doing Reproducible Quantitative Social Science (co-sponsored with COPE)
- Getting Beyond "Other": Quantitative Analysis Using Detailed Demographic Categories
- How (and Why) To Do Corporate Research
- IRBs and Responsible Conduct of Research with Children, Inmates and other Potentially Sensitive Groups
- Navigating Queer Identities in Research
- Negotiating an Activist Identity as a Disabilities Scholar
- Reviewing Articles Effectively: Advice from the Journal Editors
- Should I Retire? Late-Career Decision Making
- Writing for Contexts. And the World
- Writing Op-Eds: The Fine Art of Communicating Sociological Science in the Newspapers

### Policy and Research Workshops

- 50 Years of the National Longitudinal Studies - A Workshop for New and Returning Users
- Big Data for Social Science Research: Theoretical Framing, Analytical Techniques, and Emerging Research Standards
- European Research Council: Funding for U.S. Sociologists (and Elsewhere!) Willing to Explore Ideas or Territories Never Explored Before
- How to Write a Successful Fund for the Advancement of the Discipline (FAD)
- Introduction to LIS - A Resource for Cross-National Research on Poverty, Inequality, Employment, and Wealth
- National Science Foundation: Proposal Development, Merit Review, and Funding Opportunities
- Panel Study of Income Dynamics Workshop
- Qualitative Research: Funding Opportunities and Review at the National Science Foundation
- Seeking Research Funding from the National Institutes of Health (NIH)
- Using the Wisconsin Longitudinal Study
- What Investigators Should Know about Grant-Seeking from Private Foundations
- What You Need to Know about the New "Common Rule" (sponsored by COPE)

### Teaching Workshops

- Carrying Out Qualitative Research in the Real World: Confidentiality, Ethics, IRBs, and Other Real-life Challenges
- Creating Undergraduate Applied Sociologists: Starting/ Building and Administering an Internship Program for Sociology Majors
- Innovative Teaching Approaches for Hybrid and Online Courses
- Introducing theARDA.com: Tools for Teaching about Religion, Social Movements and Beyond
- Long Live the Lecture!
- Navigating Difficult Dialogues about Current Events in the Classroom and on Campus
- Presenting about Teaching? Publish about Teaching! A Workshop Sponsored by TRAILS and Teaching Sociology
- Re-imagining the Constitution
- Teaching Ethnomethodology and Conversation Analysis
- Teaching Introductory Sociology for New Instructors
- Teaching Quantitative Literacy and Reasoning in the Social Sciences
- Teaching the Sociology of Law

## Section Activities

ASA's 52 Sections contribute an important segment to the Annual Meeting Program. Section sessions and activities at the Annual Meeting are interspersed throughout the four-day schedule. These specialized sessions range in format from formal paper presentations to panels and discussion roundtables and are open to all meeting attendees.

The number of sessions allocated to each section is based its membership size. More than 180 sessions/ meetings are scheduled. Sections provide a valuable way to meet colleagues interested in similar sociological specialties and find a small "home" in a large meeting. The primary day for each section's program is listed below. Sections whose programs are too large to fit onto one day (\*starred below) will have the overflow accommodated on an adjacent day. Check the online searchable program for specific information on section-sponsored sessions.

### Saturday, August 20

- Aging and the Life Course\*
- Altruism, Morality and Social Solidarity
- Asia and Asian America
- Children and Youth
- Crime, Law, and Deviance
- Culture, Sociology of\*\*\*
- Economic Sociology\*
- Global and Transnational Sociology\*
- Labor and Labor Movements
- Marxist Sociology
- Methodology
- Social Psychology\*
- Teaching and Learning in Sociology\*

### Sunday, August 21

- Community and Urban Sociology
- Ethnomethodology and Conversational Analysis
- History of Sociology
- Human Rights
- Latina/o Sociology
- Law, Sociology of
- Mathematical Sociology
- Mental Health, Sociology of
- Political Sociology\*\*
- Population, Sociology of
- Science, Knowledge, and Technology\*
- Sex and Gender\*\*\*

### Monday, August 22

- Alcohol, Drugs, and Tobacco
- Comparative and Historical Sociology\*\*
- Disability and Society
- Environment and Technology
- Family, Sociology of the\*\*
- Inequality, Poverty, and Mobility\*\*
- Organizations, Occupations, and Work\*\*\*
- Peace, War, and Social Conflict
- Racial and Ethnic Minorities\*\*
- Rationality and Society
- Religion, Sociology of\*
- Sexualities, Sociology of
- Sociological Practice & Public Sociology

### Tuesday, August 23

- Animals and Society
- Body and Embodiment
- Collective Behavior & Social Movements\*\*\*
- Communication, Information Technologies & Media Sociology
- Consumers and Consumption
- Development, Sociology of~
- Education, Sociology of~~
- Emotions, Sociology of
- Evolution, Biology, and Society
- International Migration~~
- Medical Sociology~~~~
- Political Economy of the World System~
- Race, Gender, and Class\*\*\*
- Theory\*\*\*

- \* one session must be scheduled on the following day
- \*\* two sessions must be scheduled on the following day
- \*\*\* three sessions must be scheduled on the following day
- ~ one session must be scheduled on the preceding day
- ~~ two sessions must be scheduled on the preceding day
- ~~~ three sessions must be scheduled on the preceding day
- ~~~~ four sessions must be scheduled on the preceding day

## Activities of Other Groups

The wide-ranging interests of ASA members generate meetings of special interest groups during each year's Annual Meeting. Space is assigned as available to these groups to hold their meetings and/or sessions in evening time slots when no program sessions or other ASA activities are scheduled. Refer to the online preliminary program schedule for details on activities of affiliates and other groups. Some groups will have membership information and publications on display in Hall A at the Washington State Convention Center.

## AND THE FEATURED BOOKS ARE...

Author Meets Critics sessions bring authors of recent important books together with discussants chosen to provide different viewpoints. The 2016 Program Committee selected 22 books published during 2013-15 to be featured on this year's program.

*Between Slavery and Capitalism: The Legacy of Emancipation in the American South*  
(Princeton University Press, 2014) by Martin Ruef

*Dealing in Desire: Asian Ascendancy, Western Decline, and the Hidden Currencies of Global Sex Work*  
(University of California Press, 2015) by Kimberly Kay Hoang

*Do-It-Yourself Democracy: The Rise of the Public Engagement Industry*  
(Oxford University Press, 2015) by Caroline W. Lee

*Grounds for Difference*  
(Harvard University Press, 2015) by Rogers Brubaker

*Inequality in the Promised Land: Race, Resources, and Suburban Schooling*  
(Stanford University Press, 2014) by R. L'Heureux Lewis-McCoy

*Labor's Love Lost: The Rise and Fall of the Working-Class Family in America*  
(Russell Sage Foundation, 2014) by Andrew J. Cherlin

*Modern Families: Stories of Extraordinary Journeys to Kinship*  
(New York University Press, 2015) by Joshua Gamson

*No Way Out: Precarious Living in the Shadow of Poverty and Drug Dealing*  
(University of Chicago Press, 2015) by Waverly Duck

*Pressed for Time: The Acceleration of Life in Digital Capitalism*  
(University of Chicago Press, 2014) by Judy Wajcman

*Raising Generation Rx: Mothering Kids with Invisible Disabilities in an Age of Inequality*  
(New York University Press, 2015) by Linda M. Blum

*Redefining Race: Asian American Panethnicity and Shifting Ethnic Boundaries*  
(Russell Sage Foundation, 2014) by Dina G. Okamoto

*Sacrificing Families: Navigating Laws, Labor, and Love Across Borders*  
(Stanford University Press, 2014) by Leisy Abrego

*Strangers No More: Immigration and the Challenges of Integration in North America and Western Europe*  
(Princeton University Press, 2015) by Richard Alba and Nancy Foner

*Terrified: How Anti-Muslim Fringe Organizations Became Mainstream*  
(Princeton University Press, 2014) by Christopher Bail

*The Asian American Achievement Paradox*  
(Russell Sage Foundation, 2015) by Jennifer Lee and Min Zhou (co-sponsored with Ethnic and Racial Studies)

*The Black Power Movement and American Social Work*  
(Columbia University Press, 2014) by Joyce M. Bell

*The End Game: How Inequality Shapes Our Final Years*  
(Harvard University Press, 2015) by Corey M. Abramson

*The Enigma of Diversity: The Language of Race and the Limits of Racial Justice*  
(University of Chicago Press, 2015) by Ellen Berrey

*The Power of Market Fundamentalism: Karl Polanyi's Critique*  
(Harvard University Press, 2014) by Fred Block and Margaret R. Somers

*The Scholar Denied: W. E. B. Du Bois and the Birth of Modern Sociology*  
(University of California Press, 2015) by Aldon D. Morris

*Toxic Communities: Environmental Racism, Industrial Pollution, and Residential Mobility*  
(New York University Press, 2014) by Dorceta Taylor

*Unequal Time: Gender, Class, and Family in Employment Schedules*  
(Russell Sage Foundation, 2014) by Dan Clawson and Naomi Gerstel

## The ASA has also co-sponsored a book session with the Rose Series in Sociology.

*A Pound of Flesh: Monetary Sanctions as a Permanent Punishment for Poor People*  
(Russell Sage, 2016) by Alexes Harris

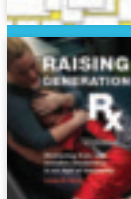
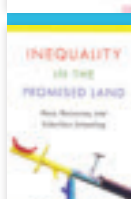
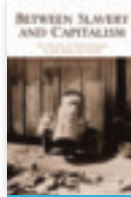


Photo Credit: Oscar & Associates



Photo Credit: Oscar & Associates

## Welcome Students!

### Undergraduate Advisers and Their Students Take Note! Poster Resource Area Showcasing Graduate Programs

This poster area features exhibits on graduate training from 40 graduate programs. Representatives from these institutions will be available to talk to undergraduate advisers, undergraduate students, MA-level students, and other interested meeting attendees at 2:30 – 4:10 PM on Saturday, August 20. The department posters will be available for viewing throughout the four days of the Annual Meeting. All attendees are welcome to drop by anytime during the convention to see these displays located in Hall A at the Washington State Convention Center.

### ASA and the Student Forum

The ASA welcomes undergraduate and graduate students at the Annual Meeting. All students who join ASA as student members automatically become members of the Student Forum. Special arrangements for students include discounted registration fees, workshops of interest to students, student paper and roundtable sessions, a reception for students, and admission to the book give-away at the end of the meeting.

**Student Reception.** All students registered to attend the Annual Meeting are invited to the open student reception on Saturday, August 20, at 6:30 – 7:30 PM.

**Special Poster Sessions.** Be sure to browse through the funding and data resources poster session to advance your work in sociology. Poster displays of graduate programs in sociology are accessible throughout the meeting, and program representatives will be available to chat with students from 2:30 – 4:10 PM on Saturday, August 20.

**Student Book Give-Away.** All student attendees at the Annual Meeting will receive a ticket to the special book give-away sponsored by ASA exhibitors on Tuesday, August 23, after the Exhibit Hall has closed.

**Student Sessions.** Whether you are planning to attend graduate school, or are further along in your profession and looking for employment in sociological practice or academia, there is useful information to be found by attending some of the workshops offered this year. If this is your first ASA Annual Meeting, the Orientation for First-time Meeting Attendees at 10:30 AM on Saturday, August 20 is a “must-attend” event, where you can meet other newcomers and get advice from ASA officers.

**Professional Development Certificate.** ASA Student Forum is pleased to offer a Professional Development Certificate (PDC) for its members based on attendance (proof by signature of the session organizer/leader/presider) at six sessions, meetings, or workshops. Students must attend six total sessions. In an effort to be more flexible with those participating, students can choose to attend six, five, or four from a list provided. If you attend four or five from the list, you MUST include a session you are presenting in at ASA and/or a session you are presenting in at a meeting held in conjunction to ASA. An ASA pre-conference workshop is also an eligible session. You can pick up a form at the Meetings Information Desk or the onsite ASA office in the Washington State Convention Center.

**Tip:** Don't let the huge program overwhelm you. Start by looking at the roundtable and paper sessions sponsored by the Student Forum and then check the online searchable program to identify other sessions in your particular areas of interest.

## ASA STORE

All attendees are welcome to browse through the on-site ASA Store area at the Annual Meeting, which will be filled with recent journal issues, timely books, teaching resources, career publications, sociological practice materials, and directories and reference volumes.



The ASA Store is located in Hall A at the Washington State Convention Center. The on-site Store will be staffed by ASA Executive Office personnel and open during the same hours as ASA Exhibits.

You don't need to wait until you go to the Annual Meeting to get ASA publications. Avoid toting heavy publications on your return home. Visit the online Store ([www.e-noah.com/bookstore](http://www.e-noah.com/bookstore)) at your convenience to place your order and have the materials you need for planning for fall classes shipped straight to you!

## Networking Opportunities at the ASA Annual Meeting Welcoming Reception

All meeting registrants are invited to the Welcome Reception, which follows the Opening Plenary Session on Friday, August 19 and celebrates the opening of the 111<sup>th</sup> Annual Meeting. This social hour kicks off at 9:00 PM and provides opportunities to renew past acquaintances, chat with old friends, and find a newcomer to befriend. New members and first-time meeting attendees are particularly encouraged to come and have fun!

### Orientation for First-time Attendees

If this is your first time attending an ASA Annual Meeting, or even if it isn't, plan on attending the orientation session at 10:30 AM on Saturday, August 20, prior to the mid-day plenary on the first full day of program sessions. Hosted by ASA Secretary Mary Romero and Executive Officer Sally T. Hillsman, this special orientation provides the opportunity to meet ASA officers and staff and begin networking with experienced colleagues. Recommendations on navigating the Annual Meeting will be shared in informal roundtable discussion. Advice from ASA officers and experienced attendees will help you chart a course through the myriad activities and substantive attractions during the convention week.

### Reception for Scholars with International Research & Teaching Interests

Scholars from countries outside the United States are invited to meet U.S. sociologists interested in international collaborations at a reception for international scholars on Saturday, August 20 at 7:00 – 8:00 PM.

### Departmental Alumni Night (DAN)

The Departmental Alumni Night (DAN), now in its 43<sup>rd</sup> year, is a social event held after the first full day of sessions, where attendees can connect with friends, colleagues, and rivals to reminisce about graduate school, create new coalitions, and catch up on the latest news. This traditional gathering will begin at 9:30 PM on Saturday, August 20.

DAN provides departments with the opportunity to have an alumni gathering without the considerable expense of arranging one. Each graduate department of sociology in the United States and Canada receives an invitation to sponsor a table for alumni and friends. A small fee is charged to assist in covering expenses for this affair. Remind your department chair to reserve a table now! Visit the Annual Meeting website for more information at [www.asanet.org/AM2016/major\\_receptions.cfm](http://www.asanet.org/AM2016/major_receptions.cfm). Tables will also be provided for sociologists in business and industry as well as for international scholars and guests.

### Community College Faculty “Bagel” Breakfast

Sociologists teaching in community colleges are invited to a special bagel breakfast at 7:00 AM on Sunday, August 21. Mark your calendar for this early-bird event where you can meet with other colleagues teaching at community colleges.

### Honorary Reception

All meeting attendees are invited to attend the Honorary Reception at 6:30 PM on Sunday, August 21, to express appreciation, congratulations, and best wishes to President Ruth Milkman and the major 2016 ASA award recipients.

Since 1984, social science departments and regional societies have joined the ASA in co-sponsoring the annual Honorary Reception. Donors and sponsors of this year's reception will be announced in the Final Program. If your department or institution would like to sponsor this event, contact the Governance Department at the ASA Executive Office (202-383-9005, x334; [governance@asanet.org](mailto:governance@asanet.org)) to request a pledge form.



Photo Credit: Alabastro Photography

## EXPERIENCE SEATTLE: REGIONAL SPOTLIGHT

Seattle is the 20<sup>th</sup> largest city in the United States and is part of the 15<sup>th</sup> largest metropolitan statistical area (Seattle-Bellevue-Tacoma). In the Northwest corner of the U.S., Seattle has historically been a gateway to the Pacific Rim. Seattle was officially incorporated by the Oregon Territorial Legislature in 1869 with a population of just over 2,000 residents. Its first major growth occurred in the 1890s; it grew to over 200,000 by 1910 when it sponsored the 1909 Alaska-Yukon-Pacific Exposition (on the current grounds of the University of Washington). In 1914 it boasted having the tallest building west of the Mississippi, the 42-floor Smith Tower. Seattle is now an international high-tech, innovative, and rapidly growing urban center. Greater Seattle is home to Microsoft, Starbucks, Costco, Nordstrom, Amazon, and Boeing. Nestled between Puget Sound and Lake Washington and bounded by the Cascade and Olympic mountain ranges, Seattle offers great natural beauty. Its 37 inches of rain and 58 fully clear days per year keeps this urban space green. Seattle is home to great food and a vibrant local food movement, boasts numerous small distilleries and breweries, and has one of the largest and oldest open farmers' markets in the United States. Seattle has also been the seat of great music from classics to jazz to being a consistent place for new music (including the Ventures, Hendrix, Cobain, and Macklemore). So come to Seattle to enjoy the Northwest corner of the country, to observe a city coping with issues of rapid growth, to find one of the most diverse zip codes in the United States, to support a \$15 minimum wage, to see legal marijuana stores on street corners, and to discover light rail rapid transit. All in all Seattle's a great spot for a sociological adventure.

The local arrangements committee, chaired by Jerald R. Herting (University of Washington) and Jennifer McKinney (Seattle Pacific University) have put together a few Footnotes articles and a number of panels and events that capture some key regional history and issues and suggests the overall flavor of Seattle and the region.

### Regional Spotlight Sessions

View the online preliminary program schedule for the complete details of Regional Spotlight Sessions and Tours on the ASA Annual Meeting website: [www.asanet.org/AM2016/am\\_2016.cfm](http://www.asanet.org/AM2016/am_2016.cfm). This year's spotlight sessions include:

- Homeless in Seattle: Responding to a State of Emergency
- Immigration and Refugee Dynamics in the Northwest
- Marijuana—Legalization and Commercialization
- Poverty and Wealth Inequality in the Pacific Northwest
- Sustainability and the Urban Environment: Making Green Cities
- Sustainable, Just, and Inclusive: Seattle's Urban Food Systems
- The Changing City: Housing, Residential Mobility, and Neighborhood Stratification in Seattle
- Wages and Labor in Seattle: \$15 Per Hour Movement

### Regional Spotlight Tours

Plan your schedule now to take advantage of one or more of this year's local tours. No matter which adventure you decide to embark on, there is a common denominator: The way to experience and learn about the city is to meet with, talk to, and learn from the people who live and work in the area. The schedule of tours is listed below, with descriptions and capacity limits. Reservations are required and will be accepted on a first-come, first-served basis. Confirmations will be e-mailed prior to the Annual Meeting. If insufficient enrollment causes cancellation of a tour, fees will be refunded. See the ASA website for further details about reservations.

#### Tour 01. Northwest Lesbian and Gay History Tour

(co-sponsored with Society for the Study of Social Problems)

**Saturday, August 20; 10:30 AM – 12:30 PM**

**Fee: \$10 Attendance Limit: 12**

**Description:** The tour is from the Northwest Lesbian and Gay History Project. It is a 90-minute walking tour of Pioneer Square that focuses on important and ordinary sites that lesbians, gays, and other sexual minorities claimed through the early to mid-20<sup>th</sup> century. It contextualizes their lives and struggles in the social, political, and economic geographies of the cities, as well as broader social movements for sexual liberation of the era.



Photo Credit: Alabastro Photography



Photo Credit: Tim Thompson



Photo Credit: Howard Frisk Photography

#### Tour 02. Seattle Labor History Tour (co-sponsored with Society for the Study of Social Problems)

(co-sponsored with Society for the Study of Social Problems)

**Sunday, August 21; 8:30 AM – 1:30 PM**

**Fee: \$40 Attendance Limit: 30**

**Description:** Join Andrew Hedden, University of Washington's Harry Bridges Center for Labor Studies, for a city-wide bus tour of Seattle's storied labor history. From the 1919 Seattle General Strike to the 1999 WTO protests and beyond, from the IWW to Filipino American unionism, come learn about the radicals and regular working men and women who have built the city and fought for social justice.



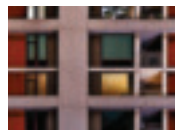
#### Tour 03. Homelessness and Supportive Housing Program

**Monday, August 22; 8:30 – 11:30 AM**

**Fee: \$65 Attendance Limit: 30**

**Tour Departure Area:** Hall A, Washington State Convention Center

**Description:** Downtown Emergency Services Center (DESC) began in 1979 as an emergency shelter for vulnerable adults living with behavioral health disorders and chronic homelessness. Today DESC is Seattle's leading provider of award-winning housing and support services to chronically homeless adults who are living with mental illness, addictive disorders, and co-occurring disabilities.





## MFP BENEFIT RECEPTION

Set aside time during the busy weekend to join good friends and supporters of ASA's Minority Fellowship Program (MFP) and the celebration marking its 43<sup>rd</sup> year! Plan to relax after dinner, nibble a sweet or two, and meet current Fellows and MFP alumni. Attend this special event and reaffirm your commitment to the MFP Program.



*Sunday, August 21, 2016 9:30 - 11:00 PM*

\$25 - donor; \$50 - sponsor; \$100 - benefactor  
Admission is by ticket only. The Minority Fellowship Program supports pre-doctoral training for students of color. Purchase your tickets when you preregister online for the meeting to specify your contribution level and reserve your MFP Benefit ticket.

## JUST DESSERTS!

### A Carla B. Howery Teaching Enhancement Grant Program Benefit Reception

Looking to escape the pressures of presenting papers, searching book displays, and participating in committee meetings? Come and relax with friends at this benefit event, "Just Desserts." As the name implies, you should bring your sweet tooth along to enjoy special desserts, good coffee, stimulating conversation, and smile knowing that all of this pleasure goes to a good cause.



*Sunday, August 21, 2016 8:00 - 9:30 PM*

\$25 - donor; \$50 - sponsor; \$100 - benefactor  
Admission is by ticket only. The Carla B. Howery Teaching Enhancement Grant is a small grants program designed to support teaching-related projects that have long-lasting and transferable impact. Purchase your tickets in advance when you preregister online for the meeting to sign up for your "Just Desserts."

## Section Receptions

In addition to sponsoring substantive program sessions, the 52 ASA Sections often host receptions for their members during the Annual Meeting. These informal social events are primarily held in the evenings on the first and third days of the meeting, and all members of a sponsoring section are welcome to attend. Sometimes several sections will co-host a joint reception, which doubles or triples the fun!

Look for the following section receptions during the Annual Meeting in Seattle.

### Saturday, August 20, 6:30 PM

Joint Reception: Section on Alcohol, Drugs and Tobacco; The Society for the Study of Social Problems Drinking and Drugs Division (offsite)  
Joint Reception: Section on Crime, Law and Deviance; Section on Sociology of Law; Section on Human Rights (offsite)  
Joint Reception: Section on Global and Transnational Sociology; Section on Sociology of Culture; Section on Political Sociology  
Joint Reception: Section on Teaching and Learning in Sociology; Alpha Kappa Delta  
Section on Aging and the Life Course Reception (offsite)  
Section on Asia and Asian America Reception (offsite)  
Section on Children and Youth Reception (offsite)  
Section on Community and Urban Sociology Reception (offsite)  
Section on Ethnomethodology and Conversation Analysis Reception (offsite)  
Section on Labor and Labor Movements Reception  
Section on Latina/o Sociology Reception (offsite)  
Section on Marxist Sociology (offsite)  
Section on Methodology Reception  
Section on Science, Knowledge and Technology Reception (offsite)

### Sunday, August 21, 7:30 PM

Joint Reception: Section on Altruism, Morality and Social Solidarity; Section on Sociology of Emotions; Section on Social Psychology (offsite)  
Joint Reception: Section on Economic Sociology; Section on Comparative-Historical Sociology; Section on Organizations, Occupations and Work (offsite)

### Monday, August 22, 6:30 PM

Joint Reception: Section on Body and Embodiment; Section on Sociology of Sexualities (offsite)  
Joint Reception: Section on Collective Behavior and Social Movements; Section on Racial and Ethnic Minorities (offsite)  
Joint Reception: Section on Evolution, Biology and Society; Section on Mathematical Sociology, Section on Rationality and Society  
Joint Reception: Section on Medical Sociology; Section on Sociology of Mental Health  
Joint Reception: Section on Race, Gender and Class; Section on Sociology of Sex and Gender (offsite)  
Joint Reception: Section on Sociology of Development; Section on Political Economy of the World-System (offsite)  
Joint Reception: Section on the Sociology of the Family; Section on Sociology of Population (offsite)  
Section on Animals and Society Reception (offsite)  
Section on Communication, Information Technologies and Media Sociology Reception (offsite)  
Section on Consumers and Consumption Reception (offsite)  
Section on Disability and Society Reception  
Section on Environment and Technology Reception (offsite)  
Section on Inequality, Poverty and Mobility Reception (offsite)  
Section on International Migration Reception (offsite)  
Section on Peace, War and Social Conflict Reception (offsite)  
Section on Sociological Practice and Public Sociology Reception  
Section on Sociology of Education Reception  
Section on Sociology of Religion  
Theory Section Reception

## Wireless Internet Access and Social Media During the Annual Meeting

We will continue to use technology at the 2016 meeting to improve participants' meeting experiences, increase the efficiency and effectiveness of information sharing, and facilitate networking in both physical and virtual spaces. ASA provides complimentary basic bandwidth wireless internet access for attendees in the session rooms during the Annual Meeting. For those considering incorporating videos into your presentations, keep in mind that the basic bandwidth is sufficient to allow web browsing, access to the Annual Meeting Mobile App information, and e-mail access. However, it will not support streaming data (including Skype and FaceTime) for paper session presentations. **Please note: requests for hard-wired Internet lines in session rooms for presentations will not be honored.**

In ASA sessions, members of the audience may use Twitter or other social media to share research being presented. In rare instances people may record sessions. If presenters prefer that audio or video recordings not occur, please share your request with the audience. ASA encourages all program participants to be sensitive to the requests of others. In addition, the ASA Press Office shares results from the meeting with the media. ASA encourages presenters to notify their university press offices to ask them to share sociological research results that they believe are newsworthy.

## Audio-Visual Support Provided in Session Rooms

The quality of any given material depends in part on how well the material itself is communicated. The Program Committee encourages all paper presenters to increase audience interest and participation by creatively using visual aids during their presentations.

ASA provides an LCD Projector, laptop/computer, and screens as the standard setup for each paper session. **This equipment is not provided for poster sessions or roundtable sessions.** You may request the following additional equipment for paper session presentations by contacting [meetings@asanet.org](mailto:meetings@asanet.org):

- Audio (sound equipment for the LCD Projector)
- Flipchart with Easel and Markers

## The Annual Meeting Mobile App

The ASA Annual Meeting Mobile App will include the full program schedule; note-taking features allowing users to save and send notes to a preferred e-mail account; maps and floor plans for the facilities; and information on hours and locations for various Annual Meeting services. The online program schedule and the Annual Meeting Mobile App now serve as the "Program & Convention Bulletin," featuring current information (items not listed in the printed Final Program) that will continuously be updated with program corrections and changes to reduce the rare but frustrating experience of going to a room to find that there is an error in the printed Final Program or the session was canceled. More details on the Annual Meeting Mobile App to be provided in mid-June.

**#ASA16**  
**@ASANEWS**



Photo Credit: Tim Thompson

## Services

**Registration.** Online meeting registration is open; you may register online via a secure server, or download the full registration form to sign up for the 2016 Annual Meeting and the various services, special events and conferences, seminars, courses, and conferences. The full registration form is printed on the last page of this insert. Annual Meeting attendees are urged to register for the meeting in advance. Advance registration assists ASA in planning for the Annual Meeting and also allows cost savings for the registrants.

**Program Participants.** Presenters who have not preregistered will be dropped from the online and final programs beginning on Wednesday, June 1.

**Reminder:** Access to all ASA services is restricted to registered ASA 2016 meeting participants. ASA 2016 meeting badges are required for entry to the ASA Exhibits, Employment Service, and Child Care Service. Attendance at events that require fee payment (e.g., Tours, Courses, Chairs Conference, Director of Graduate Studies Series, Just Desserts, and MFP Benefit) is restricted to those who have registered for the meeting.

**Confirmations.** Continuing our commitment to a more environmentally sustainable meeting, we no longer print and mail confirmations to those who register online. Save the e-mailed confirmation as your record. Those who register via fax and mail will receive a printed confirmation by mail.

**Preregistration Pickup.** Attendees who preregister before **Wednesday, July 13** may pick up badges, program packets, and special tickets at the Preregistration counters in the Atrium Lobby at the Washington State Convention Center. See registration service hours below.

**On-site Registration.** Those who miss the Wednesday, July 13 preregistration deadline should go to the On-site Registration area in the Atrium Lobby at the Washington State Convention Center to complete the on-site registration form and submit payment.

### Registration Service Hours during the Annual Meeting:

Friday, August 19	1:30 - 7:00 PM	Monday, August 22	8:00 AM - 5:30 PM
Saturday, August 20	8:00 AM - 5:30 PM	Tuesday, August 23	8:00 AM - 1:00 PM
Sunday, August 21	8:00 AM - 5:30 PM		

## Accessibility Resources and Services

The ASA offers several services and oversight arrangements to facilitate attendance at the Annual Meeting.

### Comfort Zones and Lactation Room.

- Attendees coping with illness, meeting fatigue, or stress may use the small room set aside by ASA at the Sheraton Seattle Hotel and at the Washington State Convention Center as a "safe haven" to escape briefly from the noise and bustle of meeting activities.
- Families with breastfeeding needs will find the Lactation Room at the Washington State Convention Center on Level Three in Room 302.

**Gender-Inclusive Restrooms.** ASA has designated Gender-Inclusive Restroom facilities in the Washington State Convention Center (Level 4 and Level 6) and the Sheraton Seattle Hotel (Second and Third Floor). Other restroom facilities designated "women" and "men" are also available on these levels.

**Sessions.** ASA will make arrangements for sign-language interpreters, sighted guides, and other communication avenues for meeting registrants who register by Wednesday, July 13. Use the "Accessibility Services" portion of the registration form to identify the service that you need. Meeting Services staff will contact you to discuss needs and possible arrangements.

**Wheelchair and Motorized Scooter Rentals.** The ASA will have a small inventory of scooters for use by registrants who need them for specific activities/events. However, if you prefer to rent your own wheelchair or scooter, feel free to make arrangements with Scoot Around North America (888) 441-7575; [www.scootaround.com](http://www.scootaround.com)

## Child Care

ASA continues its long tradition of providing an on-site program of activities for children of Annual Meeting registrants. Arrangements have again been made with KiddieCorp to offer a full childcare program from 8:00 AM to 6:30 PM on August 20-23 for children between the ages of 6 months to 12 years. The Child Care Service will be located at the Sheraton Seattle Hotel, headquarter hotel, for the 2016 Annual Meeting.

**Families intending to use the ASA Child Care Service must preregister before Wednesday, July 13.** The non-refundable preregistration deposit is \$55 per child. The deposit will be applied toward the on-site daily usage fees, which are \$55 full-day and \$35 half-day for preregistrants. Members may preregister online via the ASA website [www.e-noah.net/ASA/Login.asp](http://www.e-noah.net/ASA/Login.asp). For more information about the service, check the Annual Meeting homepage.



Photo Credit: Adobe Stock



Photo Credit: Adobe Stock

Photo Credit: Adobe Stock

## Scholarships

Several financial assistance scholarships are available to provide reduced daily usage fees for children of unemployed or low-income members/students. To apply for a scholarship, write a letter identifying your membership status and requesting a child care scholarship and attach the letter to your registration form; send it to: ASA Meeting Services, 1430 K St. NW, Suite 600, Washington, DC 20005; fax: (202) 638-0882; or [meetings@asanet.org](mailto:meetings@asanet.org). Fill out the Child Care Registration portion of the form, provide daily usage estimates, and remit the basic child care preregistration deposit.

## Space for Non-Preregistrants

It is unlikely that non-preregistered families can be accommodated on-site. The service staffing is contracted based on the number and age of preregistered children, and on-site adjustments are limited. If there are any openings, fees for children who were not preregistered will be \$75 per day per child. No exceptions.

## Employment Service

The annual ASA Employment Service assists sociologists and prospective employers by providing convenient opportunities for interviewers and job seekers to meet in a neutral, monitored environment for initial short interviews during the Annual Meeting.

The online Employment Service module give registered users access to candidate resumes and job listings and supports an interactive scheduling calendar for setting up interview appointments during the Annual Meeting. The module is accessible through the ASA Member Portal.

**How to Participate.** Job seekers (candidates) must preregister for the 2016 Annual Meeting and pay the Candidate fee as part of their registration process.

Employers (organizations) must pay the job posting fee as part of their ES login process. After posting a job listing, an employer can designate the appropriate personnel who will serve as interviewers, provided they have preregistered for the Annual Meeting.

Interviewers must preregister for the 2016 Annual Meeting in order to be designated by Employers for the role of Interviewer. Employers must use their ASA department or company ID to login to the Employment Service and post a position. Individual IDs cannot be used. To obtain your employer ID, e-mail [empoyerserv@asanet.org](mailto:empoyerserv@asanet.org), or call (202) 383-9005, ext. 336.

The Employment Service will be open from Friday afternoon to mid-day Tuesday, August 19-23. Check the Annual Meeting website for more details about online Employment Service procedure.

**Reminder:** Anyone who wishes to use the Employment Service must first preregister by **Wednesday, July 13** for the 2016 Annual Meeting.



## Travel

Sea-Tac International Airport is less than 15 miles from downtown Seattle.

## Ground Transportation

### Link Light Rail/Sound Transit.

- Save time, fuel, and money. Take the train. Link Light Rail connects downtown to Sea-Tac with 13 stops in 37 minutes and costs \$3 each way
- Trains depart every 7½ – 15 minutes between approximately 5:00 AM and 1:00 AM.
- <http://www.soundtransit.org/>

**City Bus Service/King County Metro Transit.** The Metro buses that serve Seattle-Tacoma International Airport are located on International Boulevard (State Highway 99) and South 176<sup>th</sup> Street by the Link Light Rail Station. Departure times are shown on information signs at the bus stop. You also can pick up printed bus timetables at the Ground Transportation Information Booth on the Baggage Claim level near door number 16 across from baggage carousel 12.

- Cost is \$2.50 one way between Convention Center and SeaTac.
- [www.soundtransit.org/](http://www.soundtransit.org/)

**Seattle Downtown Airporter/Shuttle Express.** The Downtown Airporter provides bus transportation between the downtown Seattle hotels and the Seattle-Tacoma International Airport. The bus operates between SeaTac Airport and the Crowne Plaza, Fairmont Olympic, Grand Hyatt, Hilton, Renaissance, Sheraton, Warwick, Westin, Waterfront Marriott, Holiday Inn, Travel Lodge, and Best Western Hotels. See the Airporter departure schedule online.

- Cost is \$18 one way with a discount for booking a round trip.
- [downtownairporter.com/service-schedule](http://downtownairporter.com/service-schedule)

### Shuttle Express

- Service from the Airport: Passengers are picked up at the inner drive curb on the third floor of the Airport Garage.
- Service to the Airport: Call (425) 981-7000 for reservations. Passengers are dropped off at their airline.

### Seattle Taxis

- Taxi service is available throughout Seattle and on the third floor of the Sea-Tac Parking Garage.
- \$35-45 from airport to downtown hotels (metered at \$2.50/mile)
- \$40 flat fee from downtown hotels to the Airport

August's weather is the hottest for Seattle, Washington, yet few days get really hot. The pleasant temperatures are accompanied by some of the sunniest and driest conditions the city sees all year. Most August nights, the temperature drops into the 50s °F (10 to 15 °C).

## Hotel Accommodations in Seattle

The 111<sup>th</sup> ASA Annual Meeting will be held at the Sheraton Seattle Hotel and the Washington State Convention Center. Both facilities will host all ASA program sessions. ASA registration and satellite office, book exhibits, Employment Service, and the ASA Store will be located at the Washington State Convention Center. ASA Child Care and all plenary sessions will be located at the Sheraton Seattle Hotel.

All housing services are being managed through Connections Housing, the official housing vendor for the Annual Meeting. Information on making reservations at ASA convention rates is posted on the ASA website [www.asanet.org/AM2016/housing.cfm](http://www.asanet.org/AM2016/housing.cfm). You may make your reservation online, via phone, or download the reservation form on the ASA website to fax/mail.

**Staying within the Block.** Booking a room in the ASA room blocks is an important way to support the Association and ultimately keep meeting costs as low as possible. Staying "within the block" is also more convenient and helps you stay connected with the informal activities and networking opportunities during the meeting.

## Room Rates

Hotel	Single/Double	Triple/Quad
Sheraton Seattle Hotel (2) Headquarter Hotel	\$227*	\$252/\$277*
Crowne Plaza Hotel Seattle (2)	\$215*	\$225/\$235*
Grand Hyatt Seattle (3)	\$219*	\$237/\$247*
Hilton Seattle (1)	\$219*	\$244/\$269*
Homewood Suites Convention Center (2)	\$221/\$231*	\$231/\$231*
Motif Seattle Hotel (2)	\$215*	\$235/\$255*
Renaissance Seattle (2)	\$239*	\$249/\$259*

(1) = Union Hotel

(2) = Non-Union Hotel

(3) = Non-Union Hotel and on UNITE-HERE Boycott List

\*Rates are quoted in U.S. Dollars for non-executive/club level rooms. Please note that rates do not include state and local tax per night (subject to change).

**Please Note: The credit card provided for your reservation is for guarantee only. No fees will be applied to your credit card unless you do not show up on your scheduled arrival date or you do not cancel the reservation according to the hotel cancel policy. A credit card will be required at the time of check in unless pre-payment has been made in advance.**

**Student Rooms.** The hotels in the ASA room block are unable to offer further discounted rates to students.

**Making a Reservation.** Reservations may be made online via the link to the ASA housing site powered by Connections Housing. ASA convention rates are applicable for 3 days before and after the meeting, but the number of rooms is limited at the hotel. Pre- and post-convention availability is at the discretion of the hotel.

**Room Deposit.** All Reservations must be guaranteed with a valid credit card. The credit card provided for your reservation is for guarantee only. No fees will be applied to the credit card unless you do not show up on your scheduled arrival date or you do not cancel the reservation according to the hotel cancellation policy. A credit card will be required at the time of check in unless pre-payment has been made in advance.

**Cancellation.** To avoid a one-night Room and Tax charge, cancellations must be made a minimum of 3 days prior to arrival. Check your hotel confirmation for the specific policy at that facility.

**Accessibility Needs.** When making a hotel reservation, you may request audio, visual, or mobility assistance. If you want the ASA Executive Office to verify that your accessibility request(s) will be honored, send requests to: ASA Special Housing, 1430 K St. NW, Suite 600, Washington, DC 20005-4701; fax (202) 638-0882; [meetings@asanet.org](mailto:meetings@asanet.org).

## Reservation Deadline: Tuesday, August 2, 2016

**You are encouraged to make your reservation as soon as possible. Rooms at the ASA rates are available on a first-come, first-served basis. If a room block sells out before the deadline, no further reservations can be accepted.**

**Buyer Beware.** Be vigilant if dealing with any companies or services other than Connections Housing that imply or claim an affiliation with ASA. We have been made aware of other housing companies that may be aggressively pursuing you, or your company, to book your guest rooms through their company at supposedly significant discounts. Unfortunately, some past attendees and exhibitors have fallen prey to these companies and have either lost their significant deposits; been relocated with little or no warning; have not had the guest rooms they thought they had booked; or have not received reservations at the hotel they had thought were confirmed. This has caused great hardships to these companies and individuals. Reservations made through an agency other than Connections Housing will be at your own risk.

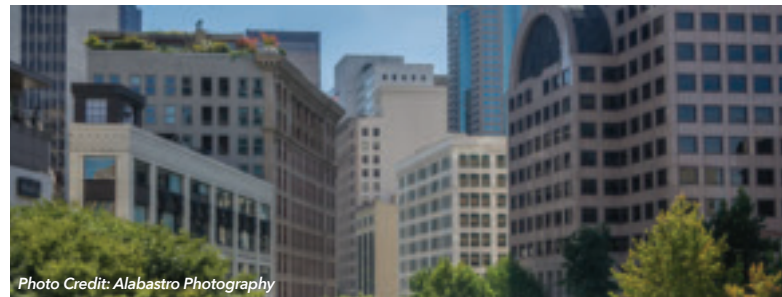


Photo Credit: Alabastro Photography

## WHY STAY IN THE ASA ROOM BLOCK?

### Stretch Your Travel Dollar

Companies are downsizing, budgets are being reduced, and travel requests are being highly scrutinized for their return on investment. The ASA understands those concerns and has partnered with the meeting hotels to offer you a competitive hotel rate and incentives that will help stretch your travel dollar.

### Receive Special Incentives

Guests who book within our block have access to amenities that are not always available at other properties. For details on the amenities offered at the individual hotels, see [www.asanet.org/AM2016/housing.cfm](http://www.asanet.org/AM2016/housing.cfm).

### Support Your Association

Booking a room in the ASA room blocks is an important way to support the Association and ultimately keep overall meeting costs as low as possible. Staying within the ASA block allows us to secure meeting space. We represent the face of our discipline in Seattle over the Annual Meeting dates.

### Represent Your Discipline

We are a discipline concerned with workers' rights and improved living standards. Show your support for the various hotel staff by staying in the Annual Meeting hotels. Your business supports their livelihood.

### Be a Part of the Action

The 111<sup>th</sup> Annual Meeting will be an intellectual conversation that extends beyond the session rooms. Connect, learn, and share with each other in those informal moments in the hotel lobby, elevator, and corridors.

### Book Your Room Today!

Hotel rates at the ASA properties are some of the most competitive in the area and rooms sell out fast. Housing blocks close **Wednesday, August 3, 2016**. Don't be left out; book your room today! For more information or to book your reservation, see the ASA website [www.asanet.org/AM2016/housing.cfm](http://www.asanet.org/AM2016/housing.cfm).

# 2016 Annual Meeting Registration

## Registrant Information: Please type or print legibly

Last Name \_\_\_\_\_ First/Middle Name \_\_\_\_\_

Work Affiliation(s) for Badge \_\_\_\_\_

Summer Mailing Address \_\_\_\_\_

Daytime Telephone: ( \_\_\_\_\_ ) \_\_\_\_\_ Fax or E-mail \_\_\_\_\_

Please indicate the number of ASA Annual Meetings you have attended:  0  1-5  6-10  More than 10

**General Registration Fees (in US dollars):**      **Pre-registration (until July 13)**      **On-Site**

**ASA Members:**

<input type="checkbox"/> Member/Associate Member	\$210	\$260
<input type="checkbox"/> Student Member	\$110	\$150
<input type="checkbox"/> Retired Sociologist Member	\$110	\$150
<input type="checkbox"/> Unemployed Sociologist Member	\$110	\$150
<input type="checkbox"/> Secondary School Teacher Member	\$110	\$150

**Non-members:**

<input type="checkbox"/> Non-Member US sociologist	\$370	\$470
<input type="checkbox"/> Non-Member outside the US.	\$210	\$260
<input type="checkbox"/> Non-Member non-sociologist	\$210	\$260
<input type="checkbox"/> Non-Member student	\$145	\$190
<input type="checkbox"/> Non-Member secondary school teacher	\$110	\$150

**Guest Pass:** A general registrant may sign up for one guest registration to provide a courtesy badge (name only, no affiliation) for a spouse, partner, family member, or other guest. This guest pass provides only a name badge; the printed *Final Program*, tote bag, and other Annual Meeting materials are not included. Any guest who wants the Annual Meeting program materials and full access to ASA services and special sessions must register individually and pay the full registration fee.

<input type="checkbox"/> Guest (name badge only)	\$50	\$60
--	------	------

Guest Badge Information: Last Name \_\_\_\_\_ First Name \_\_\_\_\_

## Liability and Photography Waivers

Please read then check the boxes below.

I agree and acknowledge that I am undertaking participation in ASA events and activities as my own free and intentional act and I am fully aware that possible physical injury might occur to me as a result of my participation in these events. I give this acknowledgment freely and knowingly and that I am, as a result, able to participate in ASA events and I do hereby assume responsibility for my own well-being. I also agree not to allow any other individual to participate in my place.

By checking this box, I certify that I have read and understood the Liability Waiver above.

By attending the Annual Meeting, you give permission for images of you, captured during the conference through video, photo, and/or digital camera, to be used by the ASA in promotional materials, publications, and web site and waive any and all rights including, but not limited to, compensation or ownership. Unless this permission is revoked in writing to the ASA, by virtue of their attendance all conference visitors agree to the use of their likeness in such materials.

By checking this box, I certify that I have read and understood the Photography Waiver above.

## Registration Policies

**Deadline: Pre-registration closes on July 13. Forms and payments must be postmarked/faxed no later than July 13 to be eligible for the pre-registration discount.** Registration materials postmarked/faxed after July 13 will not be accepted for pre-registration; they will be held at the Situations Desk in the ASA registration area at the Washington State Convention Center for processing at the on-site registration rates shown above.

## Program Participants: All program participants are required to preregister by May 11 in order to have their names listed in the Final Program.

Program participant registration fees are non-refundable. Only one registration fee payment is required from a participant. If additional payments are received, 90% of duplicate fees will be refunded.

**Refunds/Cancellations:** Cancellation notice must be made in writing. 90% of non-participant registration fees will be refunded if written cancellation is received before July 13. Cancellations and refund requests received after July 13 will not be accepted. **All fees are non-refundable after July 13, 2016.** Unfortunately, under no circumstances can ASA issue refunds for no-shows.

**Reminder: Program participant registration fees are non-refundable; cancellations will not be accepted nor refunds issued.**

**Duplicate Payments:** The 90% refund policy applies to any and all duplicate payments. If you fax your registration form with a credit card authorization, do not send a confirming copy by mail.

**Total Fees:** Remittance in US funds must accompany this form.

Check here if accessibility services are requested on the reverse side.

Registration: \_\_\_\_\_ \$ \_\_\_\_\_

Guest Registration: \_\_\_\_\_ \$ \_\_\_\_\_

Child Care Service Deposit: \_\_\_\_\_ \$ \_\_\_\_\_

Child Care Contribution: \_\_\_\_\_ \$ \_\_\_\_\_

Employment Service: \_\_\_\_\_ \$ \_\_\_\_\_

Conferences: \_\_\_\_\_ \$ \_\_\_\_\_

Courses: \_\_\_\_\_ \$ \_\_\_\_\_

Tours: \_\_\_\_\_ \$ \_\_\_\_\_

Special Events: \_\_\_\_\_ \$ \_\_\_\_\_

**TOTAL \$ \_\_\_\_\_**

**Payment:** Provide credit card authorization below, or make check payable to ASA and return form with payment to:  
American Sociological Association, 1430 K Street, NW, Suite 600,  
Washington, DC 20005, USA, or fax to (202) 638-0882

Credit Card Type:  American Express  Mastercard  Visa

Card Number \_\_\_\_\_ Exp. Date \_\_\_\_/\_\_\_\_/\_\_\_\_

Signature: \_\_\_\_\_

*Office Use only:*

Date \_\_\_\_\_ Init \_\_\_\_\_

DC# \_\_\_\_\_ Auth \_\_\_\_\_

# Events and Services

## Accessibility Services

Registrants may request accessibility services (sign language interpreters, sighted guides, accessible accommodations, etc.) to facilitate their full participation in the Annual Meeting. To request accessibility services, please check the box below. ASA Meeting Services staff will contact you about service needs and arrangements via phone or e-mail prior to the meeting.

Accessibility aid requested: \_\_\_\_\_

## Child Care Service

To preregister, provide information on children and service usage below and remit the \$55.00 non-refundable preregistration deposit for each child. The deposit will be applied to the first day's usage and it guarantees service access at discounted daily use fees (\$35 half day, \$55 full day) during the meeting.

Child's Name	Age	Estimated Daily Use:	Morning	Afternoon	Total
_____	_____	_____	_____	_____	\$55.00
_____	_____	_____	_____	_____	\$55.00
_____	_____	_____	_____	_____	\$55.00
_____	_____	_____	_____	_____	\$55.00
_____	_____	_____	_____	_____	\$55.00

**Child Care Service Preregistration Total \$ \_\_\_\_\_**

## Child Care Contribution

Attendees are invited to make donations to help cover the costs associated with providing a children's day-care program during the Annual Meeting. The fees paid by service registrants cover less than half of the cost to provide this service. Contributions in any amount are welcomed to help support scholarships for low-income families.

**Child Care Contribution Total \$ \_\_\_\_\_**

## Employment Service

Candidate/Job Seeker:

ASA Member	\$55.00
Non-Member	\$90.00

Interviewer\* \_\_\_\_\_ \$ \_\_\_\_\_

\*Employer must pay \$300 fee via E3 module

**Employment Service Total \$ \_\_\_\_\_**

## Conferences

(all are pre-convention, held on August 19)

Department Chairs:	\$150.00
Department Affiliate:	\$180.00
Non-Affiliate:	\$180.00
Directors of Graduate Study:	\$60.00
Department Affiliate:	\$80.00
Non-Affiliate:	\$80.00
ASA Social Media Conference:	\$25.00

**Conferences Total \$ \_\_\_\_\_**

## Course (pre-convention, held on August 19)

C1. Reframing Immigration and Immigration Reform: A Workshop on Strategic Communications (presented by The Frameworks Institute) 10:00am - 12:30pm	\$75.00
C2. Reframing Immigration and Immigration Reform: A Workshop on Strategic Communications (repeat of morning session, C1, presented by The Frameworks Institute) 2:00 - 4:30pm	\$75.00
C3. Creating Opportunities for Student-Facilitated Discussions in the Classroom and the Broader Community	\$75.00
C4. MAXQDA Software Training	\$75.00
C5. Qualitative Comparative Analysis and Fuzzy Sets	\$75.00
C6. Incorporating American Community Survey and US Census Data into Undergraduate Courses	\$75.00

**Course Total \$ \_\_\_\_\_**

## Special Events

Minority Fellowship Program Benefit Reception (Sunday, August 21, 9:30pm):	\$25.00
Donor	\$50.00
Sponsor	\$100.00
Benefactor	\$100.00
Teaching Enhancement Fund "Just Desserts" (Sunday, August 21, 8:00pm):	\$25.00
Donor	\$50.00
Sponsor	\$100.00
Benefactor	\$100.00

**Special Events Total \$ \_\_\_\_\_**

## Tours

Please check the online searchable program for dates/times of your own program presentations before buying tickets to ensure that you do not double-book yourself.

T1. Northwest Lesbian and Gay History	\$10.00
Saturday, August 20, 10:30am - 12:30pm	
T2. Seattle Labor History (co-sponsored with the Society for the Study of Social Problems)	\$40.00
Sunday, August 21, 8:30am - 1:30pm	
T3. Homelessness & Supportive Housing Program	\$65.00
Monday, August 22, 8:30 - 11:30am	

**Tour Total \$ \_\_\_\_\_**