

026889 9999 ML NM83  
 JOANN RUCKEL  
 245 RED CLAY RD  
 #202  
 LAUREL MD 20707

March 1983 • Vol. 11, No. 3



Published by the American Sociological Association  
 1722 N St. N.W., Washington, D. C. 20036 • (202) 833-3410

# Footnotes

Non-Profit Org.  
 U.S. POSTAGE  
 PAID  
 Permit No. 43089  
 Washington, D.C.

## NSF Budget Increases

The Reagan Administration's budget proposal for FY 1984 calls for a significant increase in support for social research at NSF. The Division of Social and Economic Sciences is being recommended for an increase of about \$3.5 million, or 17.6 percent more than is currently available. The 1984 Sociology Program budget, if approved, would still represent a decline of \$1.1 million from the FY 1980 budget, with no adjustments being made for inflation.

## NSF Announces Sociology Grants for FY 82

Sixty-one research grants totaling \$2.2 million were made by the Sociology Program at the National Science Foundation during fiscal year 1982. This was down from about \$3.0 million awarded during 1981 and 3.9 million in 1980. The 1983 funding level is slightly higher than 1982, and another modest increase has been proposed for the upcoming fiscal year.

According to Joanne Miller, newly appointed Program Director for Sociology, the 1982 awards will support thirty-six new projects, twelve continuations (the second or third year of multiyear awards), and five supplements.

Also included are seven dissertation awards and a group travel grant made to the ASA to support the travel of sociologists to the recent International Sociological Association meetings in Mexico City.

Thirteen of these awards were jointly funded with other programs of NSF. Of the 142 proposals which were reviewed for the first time during fiscal year 1982, 44 or 31 percent were funded.

### New Research

**Phipps Arabie**, University of Illinois, Urbana; *Blackmodels and Clustering: Attribute Data, Op-*

*timization and Three-Way Data*; \$35,000.

**Peggy Bartlett**, Emory University; *Adaptive Strategies of Georgia Farmers*; \$55,000.

**Judith Blake**, Institute for Policy & Management Research; *Number of Siblings and Achievement Characteristics and Goals of High School Seniors*; \$35,330.

**Peter M. Blau**, State University of New York, Albany; *Sociological Aspects of Crime in Metropolitan Areas*; \$27,762.

**Pamela Cain and Catherine Silver**, CUNY, Hunter College; *Life Cycle Variation in the Job Choices of Women: Implications for Occupational Segregation*; \$49,891.

**Clifford C. Clogg**, Pennsylvania State University; *Demographic Indicators of Underemployment, 1969-1980*; \$37,495.

**Frederic C. Deyo**, State University of New York, Brockport; *Export-Oriented Industrialization and Labor Relations*; \$24,667.

**Glen H. Elder**, Cornell University; *Family Influences and Child Behavior in Life-Span Perspective*; \$59,950.

**Joseph Galaskiewicz**, University of Minnesota; *Resource Allocation and Donative Transfers*; \$39,843.

**R. Kenneth Godwin**, University of Arizona; *Membership in Public*

See NSF Page 3

## Politics Dominate Research Programs at NIE

At the 1982 Annual Meeting, the Council adopted a resolution which condemned the conversion of the National Institute of Education "to the service of political ends through the use of political criteria to select research reviewers, to establish a research agenda and determine which proposals are to be funded, and to select program staff members". Council also requested that an article describing the situation at NIE be published in FOOTNOTES.

The following article was prepared by members of the NIE staff who have requested that they remain unidentified. The article was submitted to the head of the Institute, and his comments were solicited. No official comments have been received.

substantial portion of the sociological research conducted on American education, is of immediate concern to the profession.

The discussion will not cover all the events that have taken place at NIE under the current administration in the areas of planning, management and personnel. Instead, it will focus on the conduct of one research grants program in order to show the ways in which a series of actions has altered the nature of the funding process while preserving the formal structure.

### NIE Mission

When the Institute was established ten years ago, its mission was described as the provision of "leadership in the conduct and support of scientific inquiry into the educational process". The Congressional mandate stressed improvement of the quality of American education and strengthening equality of educational opportunity.

In theory, NIE and these mandates are to be preserved. Although the current administration has sought the elimination of the Department of Education, Secretary Bell has argued that research is a proper Federal function in the field of education and recommended that NIE be maintained as part of a research foundation that would replace the department.

A portion of NIE's activity has been conducted through research grants programs, each organized around a specific broad subject area. All these programs were suspended in 1981, first with the budget rescission in the spring and then with budget cuts and restrictions for FY 1982 that Congress enacted at the end of September.

See Citizen Page 10

## Council Adopts Budget for 1983

The ASA Council met in Washington, D.C. in late January and approved the Association's operating budget for 1983. Council also took action on several other items that are designed to increase the Association's future income and eliminate the need for deficit spending.

During the two and one-half day meeting, Council received and acted on reports from the Committee on Freedom of Research and Teaching, the Awards Policy Committee, the Committee on Professional Ethic, and the Committee on the Status of Women in Sociology. It also considered detailed reports from its subcommittee on Problems of the Discipline and from an Ad Hoc Committee on Unemployment and Underemployment Among Sociologists.

Council members also discussed future meeting sites and dates. Agreement was reached on locations and the general periods during which meetings will be held through the year 1989.

### 1983 Budget

The 1983 Budget, unlike those approved by Council for the past two years, is balanced. Actual expenditures in 1981 exceeded income by about \$49,000, and the 1982 deficit is now estimated at about \$83,000. This year's budget calls for expenditures of about \$1.4 million and income of approximately the same amount. These figures do not include income and expenditures for restricted accounts.

The 1983 budget does not call for major new expenditures. Income figures are based on a projected decline of 10 percent in membership this year. However, this membership loss is expected to be offset by the recent dues increase and by increases in charges

for journal subscriptions. The budget also calls for modest increases in Annual Meeting registration fees. However, while approving the registration fee increases, Council voted to reduce considerably charges for child care at the Annual Meeting, and it rejected a proposal from the Committee on the Executive Office and Budget which would have increased employment service charges.

In other money matters, Council discussed the various insurance plans that are offered to members under the sponsorship of the association. After considering briefly whether these plans might be used to generate income, a Standing Committee on Insurance was established. This Committee will make recommendations to Council regarding insurance in the near future.

In a matter which could have implications for the long-term funding of Association activities, Council approved in principle a plan put forward by Secretary-Elect Theodore Caplow that calls for the establishment of memorial endowments. Members will be encouraged to establish these endowments with all income going to the Association's operating budget.

In response to the number of members who have requested it, Council also voted to reinstate the emeritus member category, with no dues being charged to persons who are eligible for it. This would involve a change in the Association's By-Laws and, consequently, must be approved by the membership. It is not anticipated that this will have a major impact on Association finances, since the new emeritus category will not involve free journals.

Partly in connection with its discussion of the budget, and partly

as a separate issue, Council considered ways to expand and improve the services that members receive. It established a committee to investigate membership services and incentives generally and, specifically, to look into ways that the *Rose Monograph Series* products might become a part of an expanded package of services for new and continuing members.

### Committee Reports

The Committee on Problems of the Discipline, chaired by Matilda White Riley, met during the Council meeting weekend and made a detailed report on possible uses of money that is now accumulating in the Fund for the Advancement of the Discipline. Among the actions recommended by this Committee and taken by Council was the establishment of a summer fellowship for use at the ASA Executive Office. This fellowship is described in more detail else-

See Council Page 2

## Congressional Fellowship Announced

At its recent meeting, the ASA Council voted to establish an experimental summer Congressional Fellowship to be supported by the Fund for the Advancement of the Discipline. The fellowship, which carries a stipend of \$6,000, is to be awarded to an ASA member who has the PhD in Sociology.

The deadline for applying for the award is April 22. Additional details about the Fellowship and application procedures can be found on page 4.

## Election Issue

This issue of FOOTNOTES contains biographical information on candidates for election to ASA offices. It also includes a description of a proposed change in the By-Laws. Voting members will be given an opportunity to vote on these items later in the Spring. They are encouraged to retain their copies of this issue for reference when ballots are received.

## Council Discusses Report on Unemployment

(continued from page 1)  
where in this issue.

The Problems of the Discipline Committee was asked to continue its work with an expanded membership. This committee was also charged by Council to investigate the possibility of establishing a separate Fund for the Advancement of the Profession, an idea advanced last year by former President William Foote Whyte.

The Committee on Professional Ethics submitted its recommendations for an implementation section to be included as a part of the ASA Code of Ethics. Council discussed this in some detail before instructing a subcommittee, comprised of several of its members, to work closely with the chair of the Ethics Committee to redraft the plan. The discussion focused on the role that Council should play in hearing ethics cases and appeals. Council also voted to clarify the extent of coverage of the Code of Ethics, indicating that only charges made against members of the Association are to be adjudicated. It rejected without comment an appeal of an earlier decision by the Committee on Professional Ethics.

An extensive report prepared by Bettina Huber of the Executive Office Staff, was presented by the Ad Hoc Committee on Unemployment and Underemployment. Council accepted this report and instructed COFRAT to develop stan-

dards for the employment of part-time and temporary faculty and standards for handling lay-offs during periods of financial exigency. An Ad Hoc Committee on Restructuring Professional Opportunities in Sociology was established. The Committee is to explore the development of relationships between academic institutions and scholars working outside of academia. This Committee was given the additional charge of investigating the changing structure of employment in the discipline.

### Future Meetings

The Executive Office Staff, based on its investigation of hotels and related items, made recommendations to Council regarding Annual Meeting locations for the three years beginning in 1987. Council discussed the findings from the recent membership survey on annual meetings and the possible implications of the reintroduction of the proposed Equal Rights Amendment in Congress before voting to hold the 1987 meeting in Chicago, 1988 meeting in Atlanta, and the 1989 meeting in New York City. It was also decided that meetings should be shifted to earlier dates in August, to the extent that this is possible. In other deliberations and actions, all of which are covered in more detail in the official minutes, Council:

- Accepted a report from the

Committee on the Status of Women in Sociology dealing with women in departmental administration. Council recommended that this report be condensed and reported in a future issue of FOOTNOTES.

- Accepted a report from the Committee on Publications covering its review of *Contemporary Sociology* (details in February FOOTNOTES).
- Accepted a report from the Committee on Awards Policy and adopted with minor revisions its recommended "Manual on Policies and Procedures for Awards and Prizes".
- Accepted a report from COFRAT regarding a complaint by a member against her institution in a reappointment dispute.
- Voted to ban smoking in all meeting rooms during Annual Meeting program sessions.
- Established a Task Force on Sociology and the Media.
- Established an Ad Hoc Committee to examine issues related to federal standards for the employment of sociologists.
- Received a report on recent actions by the Consortium of Social Science Associations from COSSA Director, Roberta Miller.

1982 Biographical  
Directory of Members  
Members, \$15  
Non-members & Institutions,  
\$25 (Prepaid orders only)

## Summer Programs

Georgia Southwestern College is planning to offer a two-month summer program of field study in Japan and Taiwan. The program includes courses on Culture and Organizational Behavior, East Asian Peoples and Cultures, and Independent Study, plus extensive tours in both countries, visits to industries, museums, and historical ruins, lectures by native scholars, and home stays. The estimated cost of \$3,000 includes round trip between Atlanta and Taipei with a stopover in Tokyo, lodging and meals, inland transportation in two countries, tuition and fees. Earning credit is optional; the program is open to students, faculty, and individuals interested in East Asia. Inquiries should be made before May 1, 1983. Contact: Dr. Don Chang Lee, Morgan Hall, Room 211, Georgia Southwestern College, Americus, GA 31709; (912) 928-1308.

Ohio Northern University announces an intensive six-week Hungarian Studies program to be held from June 13 to July 22, 1983. Besides language instruction in Hungarian grammar, composition, and conversation, there will be courses dealing with the history, politics, culture, and society of East-Central Europe. Also featured are weekly presentations of Hungarian films, invited guests lecturing on special topics, and optional group tours to nearby points of interest. A special feature will be the option of participating in one week of field research (July 23-30) in the Toledo, Ohio Hungarian community. Tuition is \$400 for the six weeks, \$45 for the week of field research. Low cost housing and meal plans are available from the University. Contact: Professor Andrew

Ludanyi, Hungarian Studies, Department of History & Political Science, Ohio Northern University, Ada, OH 45810.

Emory University will offer a course in comparative health care systems in July and August 1983. The six-week course (8 semester hours) on "Health Care and Society" will take place at the University of London, England, and will include academic seminars, field trips, and clinical internships. It is open to undergraduates, graduates, and professional students, as well as health or social service personnel. Contact: Dr. Janet Hankin, Coordinator, Shriver Hall, Johns Hopkins University, Baltimore, MD 21218; (301) 338-7177.

1983  
Annual Meeting  
August 31-September 4

The Westin Renaissance Center  
Detroit, Michigan

## Classified Ads

I can help you with your article, book, or paper. Expert editing for style, clarity, mechanics. Experienced in sociological material. Karen Feinberg, 5755 Nahant, Cincinnati, OH 45224.

Large Sociology, Psychology, Politics out-of-print book list—\$1.00. Free bookfinding—any subject. Send authors, titles. Hoffman Research Services, 4 Howell Road, Rillton, PA 15678.

## New Titles in Sociology from Academic Press

### A Volume in the STUDIES IN SOCIAL DISCONTINUITY Series ... ECONOMIC SOCIOLOGY

ARTHUR L. STINCHCOMBE

This text explores the basic concepts used to describe modes of production and provides a basis for macro-analysis of the economics of social structures.

1983, 288 pp., \$29.50  
ISBN: 0-12-671380-4 (clothbound)  
1983, 288 pp., \$12.95  
ISBN: 0-12-671382-0 (t) (paperbound)

To obtain an examination copy of ECONOMIC SOCIOLOGY for class use, address your request, Attention: Sales Department, and give the title and estimated enrollment of your course.

### THE PSYCHOPATH AND MILIEU THERAPY

A Longitudinal Study  
WILLIAM McCORD

While surveying the diagnosis, etiology, and treatment of psychopathic personalities, the author examines a twenty-five-year study of children who received "milieu therapy."

1982, 320 pp., \$29.50 ISBN: 0-12-482180-4

### Two Volumes in the QUANTITATIVE STUDIES IN SOCIAL RELATIONS Series ... ASCRIPTION AND LABOR MARKETS

Race and Sex Differences in Earnings

TOBY L. PARCEL and CHARLES W. MUELLER

By assessing such factors as area, industry, occupation, and work authority, this volume examines race and sex differences in earnings.

1983, c. 408 pp., price to be announced  
ISBN: 0-12-545020-6

### ADOLESCENT SOCIALIZATION IN CROSS-CULTURAL PERSPECTIVE

Planning for Social Change

IRVING TALLMAN, RAMONA MAROTZ-BADEN,  
and PABLO PINDAS

The authors present research on individual and social development in a changing society and explore how one generation prepares the next to adjust to social change.

1983, c. 272 pp., price to be announced  
ISBN: 0-12-683180-7

### DEVIANT BEHAVIOR IN DEFENSE OF SELF

HOWARD B. KAPLAN

1980, 272 pp., \$28.50 ISBN: 0-12-396850-x

## ACADEMIC PRESS, INC.

A Subsidiary of Harcourt Brace Jovanovich, Publishers  
New York • London • Toronto • Sydney • San Francisco  
111 FIFTH AVENUE, NEW YORK, N.Y. 10003

### ORGANIZATIONAL EFFECTIVENESS

A Comparison of Multiple Models

Edited by KIM S. CAMERON  
and DAVID A. WHETTEN

1982, 304 pp., \$29.50 ISBN: 0-12-157180-7

Send payment with order and save postage and handling.  
Prices are in U.S. dollars and are subject to change  
without notice.

### Also of interest . . .

### PATRIARCHY AND FERTILITY

The Evolution of Natality in Japan  
and Sweden, 1880-1960

CARL MOSK

1983, c. 280 pp., price to be announced  
ISBN: 0-12-508480-3

### CHILDREN'S UNDERSTANDING OF TELEVISION

Research on Attention and Comprehension

Edited by JENNINGS BRYANT  
and DANIEL R. ANDERSON

1983, 384 pp., \$29.50 ISBN: 0-12-138160-9

### AGING AND MILIEU

Environmental Perspectives on Growing Old

Edited by GRAHAM D. ROWLES  
and RUSSELL J. OHTA

1982, 272 pp., \$24.00 ISBN: 0-12-599950-x

### GENDER AND PSYCHOPATHOLOGY

Edited by IHSAN AL-ISSA

1982, 384 pp., \$32.50 ISBN: 0-12-050350-6

### SEXUALITY IN THE LATER YEARS

Roles and Behavior

Edited by RUTH B. WEG

With a foreword by ROBERT N. BUTLER

1983, 320 pp., \$29.50 ISBN: 0-12-741320-0  
ISBN: 0-12-741320-0

# NSF Is Supporting 36 New Projects

(continued from page 1)

**Illic Interest Groups: National Choice Models and Interest Group Policy;** \$24,880.

**Dana V. Hiller,** University of Cincinnati; *Effects of Job Statuses for Dual-Worker Families;* \$48,950.

**Robert W. Jackman,** Michigan State University; *Economic Growth, Inequality, and Investment Patterns in Less-Developed Countries;* \$19,997.

**Christopher Jencks,** Northwestern University; *Substantive Analyses of the Survey of Job Rewards;* \$39,943.

**Arne L. Kalleberg, James R. Lincoln, and Janet P. Near,** Indiana University, Bloomington; *Organizational Control Systems and Worker Commitment in the U.S. and Japan;* \$114,460.

**Jerome Karabel and Michael Useem,** Huron Institute Inc.; *Higher Education, Class Structure, and Labor Markets;* \$54,337.

**Alan C. Kerckhoff and Richard T. Campbell,** Duke University; *A Comparative Analysis of Social Mobility Processes;* \$40,677.

**John Lankford,** University of Missouri, Columbia; *Growth and Development of a Scientific Specialty: Astrophysics and the Transformation of the American Astronomical Community, 1855-1936;* \$25,000.

**McKee J. McClendon and Elizabeth Mutran,** University of Akron; *Cohort Analysis of Worker Disabilities and Labor Market Functioning;* \$45,873.

**J. Miller McPherson,** University of South Carolina, Columbia; *Sampling Populations of Organizations;* \$75,894.

**Frederick Mosteller,** Harvard University; *Basic and Applied Studies of Social Statistical Methods;* \$130,685.

**Diane M. Pearce,** Catholic University of America; *Analysis of Housing Market Practices in Forty Cities;* \$66,713.

**Harriet B. Presser,** University of Maryland, College Park; *Determinants and Consequences of Late Motherhood: An In-Depth Longitudinal Perspective;* \$28,968.

**Marshall Robinson,** Russell Sage Foundation; *The National Committee for Research on the 1980 Census List of Topics for Monographs;* \$210,000.

**Peter H. Rossi and Jon Simpson,** University of Massachusetts, Amherst; *Determinants of Perceptions of Crime Seriousness, Punishment, and Justice;* \$128,802.

**Judith A. Seltzer and Andrew Cherlin,** Johns Hopkins University; *Marital Disruption, Living Arrangements and Children's Well-Being;* \$40,082.

**Carole Shammass,** University of Wisconsin, Milwaukee; *Inheritance Law, Family Structures and Capital Formation;* \$67,690.

**John Skvoretz and Bruce H. Mayhew,** University of South Carolina, Columbia; *Stratification and Vertical Mobility in Organizations;* \$17,973.

**Eliot R. Smith,** University of California, Riverside; *Collaborative Research on Americas' Beliefs about Social Stratification;* \$11,840.

**Lynn Smith-Lovin,** University of South Carolina, Columbia; *Affect Control Theory: A Cross-Cultural Replication;* \$21,494.

**Arnold S. Tannenbaum,** University of Michigan, Ann Arbor; *Status Consequences of Technological Change in an Intentional Communal Society;* \$40,645.

**Sidney Tarrow,** Cornell University; *Cycles of Protest and Policy Reform;* \$113,439.

**Gail E. Thomas,** Johns Hopkins University; *Understanding the Selection of Academic Majors and Careers;* \$79,539.

**Murray J. Webster,** University of South Carolina, Columbia; *Moral Characteristics and Status Generalization;* \$33,901.

**Franklin D. Wilson and Kenneth A. Root,** University of Wisconsin, Madison; *Migration, Socio-economic Attainment, and Differential Opportunity Structures;* \$10,875.

**Erik O. Wright,** University of Wisconsin, Madison; *Social Structure and Class Consciousness in Contemporary Industrial Societies;* \$52,317.

**Benjamin D. Zablocki and Angela A. Aidala,** Rutgers University; *The Enduring Effects of Collective Influence;* \$57,333.

## Continuations

**William T. Bielby and James N. Baron,** University of California, Santa Barbara; *Jobs, Firms and Industries: Economic "Dualism" and the Organization of Work;* \$45,917.

**Scott A. Boorman,** Yale University; *Mathematical Models of Social Networks: Matching, Efficiency, and Structure;* \$62,859.

**James A. Davis and Thomas W. Smith,** National Opinion Research Center; *The NORC General Social Survey for 1978, 1980 and 1982;* \$434,833.

**Robert M. Hauser and William H. Sewell,** University of Wisconsin, Madison; *Social and Psychological Factors in Aspiration and Achievement;* \$84,297.

**Robert Huckfeldt,** University of Notre Dame; *Political Assimilation and Conflict in Urban Contexts;* \$35,834.

**Edward O. Lauman,** University of Chicago; *The Social Organization of National Policy Domains;* \$66,569.

**Robert K. Merton,** Columbia University; *Theoretical Sociology: Unintended Consequences and the Self-Fulfilling Prophecy;* \$44,980.

**H. A. Michener,** University of Wisconsin, Madison; *Tests of Game-Theoretic Solution Concepts in Multi-Person Conflicts;* \$64,561.

**James P. Smith and Lee A. Lilard,** Rand Corporation; *Stability of Family Income Inequality;* \$70,423.

**Wayne J. Vilemez and William P. Bridges,** University of Illinois, Chicago Circle; *Jobs and Workers in a Metropolitan Labor Market;* \$74,737.

**Harrison C. White,** Harvard University; *Markets & Organizations: Applying Mathematical Models to Social Structures and Processes;* \$74,996.

**Harriet Zuckerman and Jonathon R. Cole,** Columbia University; *Career Patterns in Scientific Research Performance;* \$73,877.

## Supplements

**Elwood M. Beck, Jr.,** University of Georgia; *Urban Wages and Employment: A Labor Market Approach;* \$3,374.

**Phillip Bonacich and Oscar Grusky,** University of California,

Los Angeles; *The Role of Children in Family Coalition Formation;* \$5,182.

**Don Dillman and James F. Short,** Washington State University; *The Social Impacts of Volcanic Ash Fallout on Eastern Washington;* \$1,634.

**Thomas M. Guterbock,** University of Virginia; *Population Deconcentration in U.S. Metropolitan Areas;* \$6,018.

**Naomi Rosenthal,** State University of New York, Westbury; *Social Networks and Social Movements: A Dynamic Analysis;* \$5,800.

## Dissertations

**Larry J. Griffin and Beth A. Rubin,** Indiana University, Bloomington; \$2,516.

**Howard Leventhal and Nguyen Vantri,** University of Wisconsin, Madison; \$5,600.

**Joane Nagel and Herbert H. Haines,** University of Kansas; \$1,550.

**Samuel H. Preston and R. Kenneth Burns,** University of Pennsylvania; \$2,338.

**Charles Tilly and Mauricio A. Font,** University of Michigan, Ann Arbor; \$2,500.

**Immanuel Wallerstein and Resat Kasaba,** State University of New York, Binghamton; \$4,175.

**Maurice Zeitlin and William Regensburger,** University of California, Los Angeles; \$4,572.

## NSF Seeks Associate Director for Sociology

NSF's Division of Social and Economic Science is seeking candidates for the position of Associate Program Director in Sociology. This is a rotational assignment for 1 or 2 years. The position is excepted from the competitive civil service with a salary range of \$34,930 to \$53,661 per annum (equivalent to GS-13/14). Appointment will begin no later than July 1983. Candidates should have a PhD or equivalent research experience and, in addition, 4 to 6 years of successful scientific research experience beyond the PhD in the field of sociology. A broad, general understanding of current sociological research is required and some administrative experience is desirable. Responsibilities include all aspects of proposal development, review and evaluation, grants and program administration, and representation of Sociology within the Foundation and to the research community. Applicants should submit resumes indicating their current salary to: the National Science Foundation, Personnel Administration Branch, Room 212, 1800 G Street, N.W., Washington, DC 20550, Attn: E. Paul Broglio, EX 83-32. For further information, call Dr. Joanne Miller, Program Director for Sociology, (202) 357-7802. NSF is an Equal Opportunity Employer.

## Miller Heads Sociology at NSF

Joanne Miller, formerly Associate Director of the Sociology Program at the National Science Foundation, was recently promoted to the position of Program Director. She succeeds James Zuiches, who has become Associate Director for Research in the College of Agriculture and Life Sciences at Cornell University, Associate Director of the Agricultural Experiment Station, and Professor of Rural Sociology.

For the past eight years, Miller has been a Research Sociologist in the Laboratory of Socio-environmental Studies at the National Institute of Mental Health investigating the effects of job conditions on psychological functioning. In particular, her work has focused on gender and cross-national comparisons. Publications include: "Women and Work: The Psychological Effects of Occupational Conditions" (*AJS* 1979), "Individual and Occupational Determinants of Job Satisfaction: A Focus on Gender Differences" (*Sociology of Work and Occupations* 1980), "Stratification, Work, and Values: A Polish-U.S. Comparison" (*ASR* 1981), and "Sex Roles: The Division of Labor at Home and in the Workplace" (*Annual Review of Sociology* 1982).

Miller is the Deputy Editor of the *Journal of Health and Social Behavior* and is a past co-chair of the Capital Area Chapter of Sociologist for Women in Society. She was a NSF Fellow and Trainee in Demography and Ecology at the University of Wisconsin-Madison where she received her PhD in 1975. Michael Aiken chaired her dissertation on "Hospital Response to the Legalization of Abortion in New York State: An Analysis of Program Innovation" (*JHSB* 1979).

NSF is currently soliciting applications for the position of Associate Director for Sociology. Candidates must have a PhD and

## Contact

### Graduate Students

Attention graduate students interested in community research: The Graduate Student Committee of the ASA Section on Community is planning informal meetings at the spring regional meetings. We want to get as many students as possible involved, sharing research ideas, data sources, job-hunting tips, and moral support. Watch your regional newsletter for more information, or write: Mark G. Eckel, Instructor of Sociology, McHenry County College, Route 14 and Lucas Road, Crystal Lake, IL 60014.

### Job Exchange

I am currently a Senior Lecturer in Sociology at Leicester Polytechnic, and I am interested in the possibilities of job exchange, probably for a year, with a Sociology teacher in higher education in the U.S.A. A detailed c.v. and information about my current teaching duties will be made available. Contact: Lynn Makings, School of Applied Social Sciences and Public Administration, Leicester Polytechnic, P.O. Box 143, Leicester LE1 9BH, England.



JOANNE MILLER

four to six years of postdoctoral research experience. Further information is available from Joanne Miller, Sociology Program, NSF, 1800 G Street, N.W., Washington, DC 20550; (202) 357-7802. (Also, see box on this page.)

### A History of the ASA

Members—\$3.00  
Non-members—\$5.00  
Order pre-paid from the ASA

## Foreign Travel

In an effort to enhance contact between North American sociologists and sociologists elsewhere in the world, a listing of both sorts of visitors will appear at irregular intervals in *FOOTNOTES*. This is a project of the ASA's Committee on World Sociology.

### Visiting in North America

**Arye Fishman,** Bar-Ilan University, Israel, will be at the Project for Kibbutz Studies, 108 Vansong Hall, Harvard University for the Spring 1983 term. His field of research is Judaism as a religious culture. His work has focused on Judaism and modernization and the religious dynamics of the orthodox kibbutzim.

**Sven Papcke,** University of Muenster, Federal Republic of Germany, will be driving across the U.S. in April and will be in the Washington-New York area in May 1983. Contact: Martin Oppenheimer, Rutgers University, New Brunswick, NJ 08903. His specializations are the history of German sociology, European labor movements, and contemporary German society.

**Uriel Rosenthal,** Erasmus University, Rotterdam, will be in Bloomington, Indiana in April 1983. Contact: Richard F. Tomasson, University of New Mexico. His present concern is the West European welfare state and its dysfunctions.

### Going Abroad

**Morris Axelrod,** Survey Research Laboratory, Arizona State University, will be in the USSR (Moscow and Leningrad) April 10-24, 1983. He is interested in making contact with social scientists engaged in survey research in Russia.

**H. Paul Chalfant,** Texas Tech University, will be in the United Kingdom May 11 through July 10, 1983. He will be at 53 Lancaster Gate Road, London W2. He is studying the effects of church-state arrangements on religiosity in the U.S. and the U.K. He is also interested in medical sociology.

Please send information on traveling sociologists—including dates, area of specialization, and institutional affiliations—to: Richard F. Tomasson, Department of Sociology, University of New Mexico, Albuquerque, NM 87131.

## OBSERVING

Council held its winter meeting here in D.C., January 29-31. The motions passed and other actions taken by Council are summarized elsewhere in this issue of FOOTNOTES. I want to call to your attention just a couple of items.

Sociologists are beginning to have a presence on Capitol Hill. Council's decision to fund a short-term Congressional Fellowship (see article on this page for full details) is only one small addition to that presence, but it is significant that the announcement of it met with an enthusiastic response from several Congressional committees. Our task is to build upon and expand these opportunities to bring sociological knowledge to bear on important public issues (see Bill Whyte's elaboration of this and related points in his front page story in February FOOTNOTES).

I have learned from members of Congressional committees that they have occasional need for predoctoral and postdoctoral fellows. They would be pleased to consider sociologists for these short-term appointments (usually two to six months at \$750.00 a month). If you are interested, or have students who might be interested, send me a vita and short letter of interest, and I will act as facilitator. According to one committee director, they usually begin a search for fellows about 3-4 months ahead of the date on which the fellowship begins. As I learn about specific areas for which fellows are being sought, I will try to find ways of communicating same to you.

Council also discussed the question of annual meeting sites. The results of the member survey designed to help select the best time and location for annual meetings reveal the following:

- (1) About as many respondents (1,611) report their classes begin before August 31 as report that theirs begin always after Labor Day (1,624).
- (2) Cost, location, and dates of the meeting, in that order, are the three most important variables influencing decisions whether or not to attend annual meetings.
- (3) Among the options presented, the most popular date for the Annual Meeting is between August 10 and 25. It is the only date period for which a majority (2,153 Yes vs. 1,556 No) indicated they would be more likely to attend.

The Council attempted to take these factors into account in the selection of meeting sites for 1987, 1988 and 1989. The three cities selected (Chicago, Atlanta and New York, in that order) are among the most popular meeting sites in the U.S. In all three cases, the meeting will take place before Labor Day, and in two of these, the meeting will be held in early to mid-August, the most preferred time slot as indicated by the survey.

A number of members wrote in to express their concern about the continuing rise in transportation, hotel and meal costs, and the Executive Office is sensitive to these concerns. However, it is really not feasible to meet in small towns or on a college campus, in mid-to-late August, and provide the variety of program opportunities that our members expect and require.

Despite costs involved, the large majority of members who have responded to ASA surveys over a period of time prefer the major tourist cities like New York, Chicago, Boston and San Francisco. For the present, therefore, we hope that moving the dates of the Annual Meeting forward in August will be an attractive move for a significant number of members. Meanwhile, there's still 1983-86 to think about. Speaking of 1983, if you are a jazz fan, there's good news for you. The annual Montraux/Detroit International Jazz Festival will take place in Detroit by the Renaissance Center during the time of our meeting. More details later.

Another action taken by Council, and reported in detail on page 1, concerns the reactivation of the *Emeritus* membership. Related to that, a special fund drive carried out in January and February among senior colleagues has made it possible to offer emeritus status this year to eligible members.

One of the unanticipated consequences of the fund drive was the large number of personal notes received, along with contributions. Four were from colleagues who are in their late 80s and/or 90s. The oldest living colleague responding, Manuel Elmer, is 97; he joined the ASA in 1911. Also heard from were Stuart Queen (93), Rudolph Heberle (88), and Ray Wakeley (88). One veteran suggested a committee of retired members to organize them and help keep them actively involved in ASA affairs.

At the February meeting of COSSA, there was much discussion about the apparent decline in grant applications across all social science disciplines and to just about all the major funding agencies. Why this decline in applications, not only in sociology, but also in the other social sciences? Is it simply a response to the perception that the Administration was cutting funding in all areas? Or, is it attributable to the decline in number of graduate students? Or, to new demands for more class teaching hours? To a failure of will? Perhaps there is a sociological study hiding here somewhere. Meanwhile, funds are available in most areas. We will provide a lead story on the 1984 budget in the next issue of FOOTNOTES.—WVD

### A New Series!

#### CONTINUING EDUCATION WORKSHOPS FOR SOCIOLOGISTS May 28-June 3, 1983

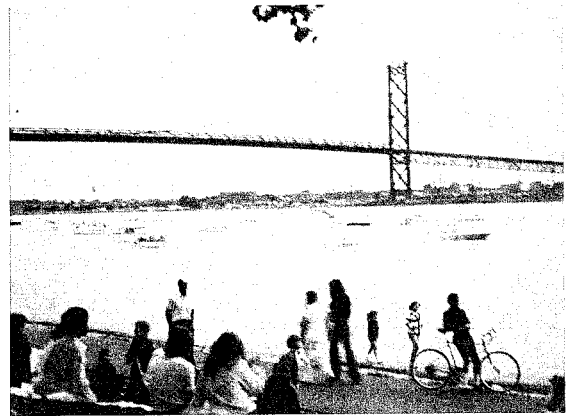
- May 28-29 and June 2-3 — Employment Opportunities in Applied Settings for Sociologists  
May 30-June 1 — Consulting Skills for Sociologists

For information and applications, write to: Carla B. Howery, American Sociological Association, 1722 N Street, N.W., Washington, DC 20036.

## Windsor Will Welcome ASA Visitors

When in Detroit, go South for a visit to Canada. Windsor, Detroit's twin city, located across the river in Canada, boasts on ethnic diversity unusual for a city its size. Its population of 200,000 comprises appreciably large communities of English, Germans, Italians, Chinese, Slavs, Hungarians, and a host of other ethnic groups, not to mention a very large French-Canadian community. This diversity expresses itself in Windsor's restaurant fare: several first-rate Chinese eateries, an excellent Italian ristorante, several fine French restaurants, an East Indian restaurant, and a Hungarian restaurant with a reputation for authentic cuisine. Then, of course, there is Canadian beer...

Downtown Windsor is convenient to the Renaissance Center via the Detroit River Tunnel. A bus runs regularly between the Renaissance Center and Windsor, making the downtown areas of the two cities accessible to pedestrian traffic for shopping, strolling, and other amusements. Some downtown stores plan to offer discounts. For those curious about Canadian art, the Windsor Art Gallery is only a 10-minute walk from the tunnel bus stop. The arrangements committee is



Ambassador Bridge from Windsor, Ontario side of the Detroit River.

looking into two prospective tours: the Hiram Walker distillery in Windsor, and the Heinz plant in Leamington, Ontario. Whether in a group or a private party, a picnic outing to Point Pelee National Park should not be missed. The park is only an hour's drive from Detroit and features nature trails, bird-watching, canoeing, and bathing beaches. On the way, stop by Fort Malden in Amherstburg and view relics of the War of 1812.

There are two Canadian universities within easy reach of the

Motor City. The University of Windsor is a 15-minute drive from the Renaissance Center, and the University of Western Ontario, located in London, Ontario, is a two-hour drive from Detroit.

We look forward to your visit and enjoyment of the amenities of a border city with a difference.

Vito Signorile  
University of Windsor

## Council Establishes Congressional Fellowship

At its winter meeting, concluded January 31, Council approved a recommendation made by the Committee on the Problems of the Discipline to establish a Congressional Fellowship on an experimental basis. The Fellowship carries a stipend of \$6,000 and will be awarded this spring to an ASA member holding a PhD in Sociology.

The purpose of the Fellowship is to provide an opportunity for a sociologist to explore the process of putting theory into practice, and bring her/his scholarly knowledge to bear on a major issue confronting a congressional committee. Ideally, the congressional committee will benefit from the opportunity to draw upon the knowledge of a sociologist, while the ASA scholar will benefit from sharing his/her knowledge with policy-makers, and from learning something about policy-making procedures. Congressional committees are currently working on a number of issues for which sociological knowledge is relevant and enlightening. These include: long-term effects of unemployment (age, sex, race, family structures among other variables); work as related to age and gender issues; crime, delinquency, prisons and recidivism; science, technology and industrial redevelopment (especially social/organizational aspects); social and technical assistance to developing/Third World countries; policies for saving and creating employment opportunities (including employee ownership options); welfare policies; health care and costs;

sociological aspects of environmental issues; the military; higher education work and productivity; bilingualism; pre-college science and math. The topics just listed are meant to be suggestive rather than exhaustive. Our prime concern is to match the knowledge and skill of a sociologist with the interests and needs of a congressional committee, regardless of its particular concern.

The Fellow will be located in the ASA Executive Office and work under the supervision of the Executive Officer. The term of the appointment is for a minimum of two months, beginning in late Spring, the Summer or early Fall. The Fellow is expected to submit a written report to the ASA at the completion of the Fellowship, which will include a summary of the problem(s) addressed, the work done, and a discussion of future possibilities for additional Congressional Fellowships.

A special committee has been appointed to evaluate candidates and select the Association's first Congressional Fellow. Committee members are: William F. Whyte (Chair), Robin Williams and James Zuiches, all of Cornell University. The deadline for applications is April 22, 1983. Persons wishing to be considered for the Fellowship should submit their application directly to: Professor William F. Whyte, New York State School of Industrial and Labor Relations, Cornell University, P.O. Box 1000, Ithaca, NY 14853. These should include a vita and a 2-3 page statement describing the candidate's areas of expertise and how they relate to a specific problem now

before Congress. The statement may also discuss the candidate's views on the interplay between research/scholarship and public policy.

### GRADUATE EDUCATION IN BEHAVIORAL AND SOCIAL FACTORS IN HEALTH

PhD program in Preventive Medicine and Community Health provides students with the opportunity for careers in research and teaching in the rapidly growing fields of social and behavioral health sciences and preventive medicine. Emphases include the promotion of health, determinants of illness, the delivery of health services, and the recovery process. Faculty members have backgrounds in medical sociology, anthropology, psychology, gerontology, epidemiology, biometry, demography, pediatrics, family medicine, behavioral medicine, psychiatry, health education, program evaluation, and family therapy.

Admission requirements include: strong background in behavioral, social, or health science; satisfactory grade point average, and GRE. Located in complex of medical, nursing, applied health, and graduate schools, with opportunities for community and clinical research. For application information, please write: Dr. David Jenkins, Director, Division of Sociomedical Sciences, Department of Preventive Medicine and Community Health, University of Texas Medical Branch, Galveston, Texas 77550.

An Equal Opportunity/Affirmative Action Institution.

# 1983 Candidate Biographies

The information published in this section was supplied by the candidates and each was informed that the submission of a photo was optional.

## President-Elect

### KAI T. ERIKSON

**Present Position:** Professor of Sociology, Yale University (1966-). **Former Positions Held:** Associate Professor, Emory University (1963-66); Assistant Professor, University of Pittsburgh (1959-63). **Degrees:** PhD 1962, MA 1955, University of Chicago; BA 1953, Reed College. **Publications:** *Everything In Its Path* (1966); *Wayward Puritans* (1976). **Honors and Awards:** 1977 Sorokin Award; 1967 MacIver Award. **Offices Held in Other Organizations:** President, Eastern Sociological Society (1980-81); President, Society for the Study of Social Problems (1970-71). **Offices, Committee Memberships and Editorial Appointments Held in ASA:** Representative, American Council of Learned Societies (1981-85); Committee on the Executive Office and Budget (1979-81); ASA Council (1975-77); 1975 Program Committee; Editorial Board, *The American Sociologist* (1972-74); Committee on Publications (1973); Committee on Nominations (1971-72); Committee on Professional Ethics (1969-72; Chair, 1972); Editorial Board, *Journal of Health and Social Behavior* (1966-68).



### HAROLD GARFINKEL

**Present Position:** Professor of Sociology, University of California-Los Angeles (1954-). **Former Positions Held:** Assistant Professor to Professor of Sociology, University of California-Los Angeles (1954-); Visiting Research Professor, Personnel Research Board, Ohio State University (1952-54); Instructor, Princeton University (1950-52). **Degrees:** PhD 1952, MA 1947, Harvard University; MA 1939, University of North Carolina. **Publications:** "The Work of Discovering Science Construed with Materials from the Optically Discovered Pulsar" in *Philosophy of the Social Science* (co-author, 1981); "On Formal Structures of Practical Actions" in *Theoretical Sociology: Perspectives and Developments* (co-author, 1972); *Studies in Ethnomethodology* (1967); "A Conception of and Experiments With Trust as a Condition of Stable Concerted Action" in *Motivation and Social Interaction* (1962). **Honors and Awards:** Visiting Professor, Johann Wolfgang Goethe-Universität (1981); Visiting Professor, Institut für Soziologie der Universität Erlangen-Nürnberg (1979-80); Visiting Fellow, Wolfson College, Oxford University (1979); Fellow, Center for Advanced Study in the Behavioral Sciences (1975-76); Simon Visiting Professor of Sociology, Manchester University (1973); Sociological Research Association (1972). **Offices, Committee Memberships and Editorial Appointments Held in ASA:** Council Member, Section on Theoretical Sociology (1968-69); Editorial Board, *American Sociological Review* (1963-65); Associate Editor, *Sociometry* (1961-63).

### ALEX INKELES

**Present Position:** Professor of Sociology, Stanford University (1971-). **Former Positions Held:** Margaret Jacks Professor of Education, Stanford University (1971-78); Instructor to Professor of Sociology (1948-71); Director of Studies in Social Relations, Russian Research Center (1950-71); Director of Studies on Non-Economic Development, Center for International Affairs (1962-71); Harvard University; Visiting Professor, Latin American School of the Social Sciences, (FLASCO), Santiago, Chile (1963); Fulbright Research Professor, Institute for Social Research, Athens, Greece (1977); International Social Science Council, Group of Twenty on Man's Condition (1975-76); Consultant to UNESCO (1950, 1978), Ford Foundation. **Degrees:** PhD 1949, Columbia University; MA 1948, BA 1941, Cornell University. **Publications:** *Becoming Modern: Individual Change in Six Developing Countries* (co-author, 1974); *Stability and Social Change* (co-author, 1971); *Socialization and Society* (co-author, 1968); *What is Sociology?* (1964); *The Soviet Citizen: Daily Life in a Totalitarian Society* (co-author, 1959); *How the Soviet System Works* (co-author, 1956); *Public Opinion in Soviet Russia* (1950); many articles on personality and social structure, and comparative studies in *ASR*, *AJS*, *Sociometry*, and other journals. **Honors and Awards:** Member, Board of Trustees, The Wright Institute (1982); Cooley-Mead Award for Distinguished Contributions in Social Psychology (1982); National Academy of Sciences (1981); Elected to Association for the Advancement of Science (1980), American Philosophical Society (1972), American Academy of Arts and Sciences (1962), Fellow, American Psychological Association (1966); Fellowships: Van Leer Jerusalem Foundation (1979), Institute for World Order and Guggenheim Foundation (1977), Russell Sage Foundation (1966), Social Science Research Council (1959-60), Foundations Fund for Research in Psychiatry (1957-60), Center for Advanced Study in the Behavioral Sciences (1955-56); Hadley Cantril Award (1975) for *Becoming Modern*; Professor Honoris Causa, Candido Mendes Faculty, Brazil (1970); Kappa Tau Alpha Annual Award (1950) and Grant Squires Prize (1955) for *Public Opinion in Soviet Russia*; Phi Kappa Phi (1941); Phi Beta Kappa (1940). **Offices Held in Other Organizations:** Sociological Research Association (President, 1980; Secretary-Treasurer, 1979; Council, 1976-78); Editor, *Annual Review of Sociology* (1975-80); Associate Editor, *Ethos* (1979-); Consulting Editor, *International Review of Cross-Cultural Studies* (1978-); Senior Fellow, Hoover Institution on War, Revolution and Peace (1977-); American Academy of Arts and Sciences (Membership Committee, 1974-76; Western Division Executive Committee, 1973-76); Executive Committee, National Research Council, Assembly of the Behavioral Sciences (1969-75); Editor, *Foundations of Modern Sociology Series*, Prentice-Hall (1962-); Eastern Sociological Society (President, 1960-61; Vice President, 1958-59; Executive Committee, 1955-56). **Offices, Committee Memberships and Editorial Appointments Held in ASA:** Section on Social Psychology (Chair, Cooley Mead Award Committee, 1983); Chair, 1961); ASA Vice President (1975-76); ASA Council and Executive Committee (1960-63); Council Member, Section on Methodology (1972-73); *Sociometry* (Board of Editors, 1955-61; Associate Editor, 1961-64).



## Vice President-Elect

### MORRIS ROSENBERG

**Present Position:** Professor of Sociology, University of Maryland-College Park (1975-). **Former Positions Held:** Professor, Department of Sociology, State University of New York at Buffalo (1974-75); Chief, Section on Social Structure, National Institute of Mental Health (1957-74); Assistant Professor of Sociology, Cornell University (1951-56). **Degrees:** PhD 1953, MA 1950, Columbia University; BA 1946, Brooklyn College. **Publications:** *Social Psychology: Sociological Perspectives* (co-editor, 1981); *Conceiving the Self* (1979); *Black and White Self-Esteem* (co-author, 1972); *The Logic of Survey Analysis* (1968); *Society and the Adolescent Self-Image* (1965). **Honors and Awards:** Distinguished Scholar-Teacher, University of Maryland (1982-83); Eastern Sociological Society Falk Medical Fund Lecturer (1979-80; 1975-76); Guest Professor, Institute for Higher Studies, Vienna (1971); Superior Service Award, DHEW (1970); W. I. Thomas Lecturer, University of Tennessee (1966); American Association for the Advancement of Science Sociopsychological Prize (1963); Fellow, Center for Advanced Study in the Behavioral Sciences (1956-57); Social Science Research Council Fellow (1953-54). **Offices Held in Other Organizations:** Editorial Board, *Social Forces* (1981-); Epidemiologic Studies Review Committee, National Institute of Mental Health (1975-77); Committee on the Evaluation of Crime Surveys, National Academy of Sciences (1974-76); Chair, Social and Cultural Processes Study Group, NIMH Research Task Force (1972-73); President, District of Columbia Sociological Society (1967-68). **Offices, Committee Memberships and Editorial Appointments Held in ASA:** ASA Council (1979-81; Subcommittee on Problems of the Discipline, 1979-81, Chair 1981; Committee on Awards Policy; Committee on Sections); Editorial Board, *Sociology of Education* (1979-81); Section on Social Psychology (Council Member, 1978-80; Chair, 1977); Council Member, Section on Methodology (1970-72); Committee on Certification in Social Psychology (1968-70; Chair, 1970); Editorial Board, *Sociometry* (1965-66).



### JOHN A. CLAUSEN

**Present Position:** Professor Emeritus and Research Sociologist, Institute of Human Development, University of California-Berkeley (1960-). **Former Positions Held:** Chair, Department of Sociology (1976-78), Director, Institute of Human Development (1960-1983), University of California-Berkeley; Chief, Laboratory of Socioenvironmental Studies, National Institute of Mental Health (1948-60); Assistant Professor of Sociology, Cornell University (1946-68); Study Director, Troop Attitude Research Branch, War Department (1942-45). **Degrees:** PhD 1949, University of Chicago; MA 1939, BA 1936, Cornell University. **Publications:** "Involvement, Warmth, and Parent-Child Resemblance in Three Generations" and "Men's Occupational Careers in the Middle Years" in *Present and Past in Middle Life* (1981); "Stigma and Mental Disorder" in *Psychiatry* (1981); "Mental Disorders" in *Handbook of Medical Sociology* (1979); "The Life Course of Individuals" in *A Sociology of Age Stratification* (1972); "Introduction", "A Historical and Comparative View of Socialization Research and Theory" and "Perspectives on Childhood Socialization" in *Socialization and Society* (1968). **Honors and Awards:** Berkeley Citation (1982); Elected to Institute of Medicine, National Academy of Sciences (1977); Fellow, Center for Advanced Study in the Behavioral Sciences (1957-58). **Offices Held in Other Organizations:** Chair, Senior Consultant Panel in the Behavioral Sciences, NIMH (1982-83); Board of Directors, Foundation Fund for Research in Psychiatry (1980-81, 1976-79); Editorial Board, *American Journal of Sociology* (1976-79); Editorial Board, *Annual Review of Sociology* (1972-76); Chair, Research Committee on Psychiatric Sociology, International Sociological Association (1970-75); Gov. Council, Society for Research in Child Development (1969-75); Editorial Board, *Psychosomatic Medicine* (1961-72); Chair, Committee on Socialization and Social Structure, Social Science Research Council (1960-67). **Offices, Committee Memberships and Editorial Appointments Held in ASA:** Committee on Sections (1978-80); Editorial Board, *Sociology of Education* (1976-78); Chair, Stouffer Award Selection Committee (1973-74); Chair, Section on Medical Sociology (1971-72); Committee on the Visiting Scientists Program (1971); Chair, Long Range Planning Committee (1969-70); Committee on Post-Graduate Seminars (1968-69); Committee on Nominations (1967); Section on Social Psychology (Council, 1962-64; Chair, 1959-60); SSRC Representative (1960-63); ASA Council (1957-61); Executive Committee, 1959-61); *Sociometry* (Editor, 1959-61; Associate Editor, 1955-59).



## Referendum

At its January meeting, Council voted to send the following By-Laws amendment to the membership for its vote on the spring ballot: "Persons seventy years of age or older may apply for and be entitled to receive Emeritus membership, which shall include all rights of active membership except journals, without further payment of annual dues, provided that at the time of application, they shall have been dues paying members of the Association for the preceding ten years".

## Petition Candidates

Three candidates were added to the ballot this year as the result of petitions. They are listed below, according to the positions for which they were nominated.

### President-Elect:

Harold Garfinkel, University of California, Los Angeles

### Council Member-at-Large

Mathew H. Greenwald, American Council of Life Insurance

### Committee on Nominations (District 2)

Luther B. Otto, Boys Town Center

Ballots will be mailed to voting members later in the Spring.

## Council

### GLEN H. ELDER, JR.

**Present Position:** Professor, Departments of Sociology and Human Development, Cornell University (1979-). **Former Positions Held:** Research Fellow, Boys Town Research Center (1977-79); Professor, Department of Sociology, University of North Carolina (1967-77); Assistant Research Sociologist, Institute of Human Development, University of California-Berkeley (1962-67). **Degrees:** PhD 1961, University of North Carolina; MA 1958, Kent State University; BA 1957, Pennsylvania State University. **Publications:** "Historical Experience in the Later Years" in *Aging and Life Course Transitions* (1982); "Scarcity and Prosperity in Postwar Childbearing: Explorations from a Life Course Perspective" in *Journal of Family History* (1981); *Family Structure and Socialization* (1980); "Approaches to Social Change and the Family", Special Supplement to the *American Journal of Sociology* (1978); *Children of the Great Depression* (1974). **Honors and Awards:** John Simon Guggenheim Memorial Fellowship (1982-83); Ernest W. Burgess Award (1979); Invited Fellow, Center for Advanced Studies in Behavioral Sciences (1978); Postdoctoral fellowship, National Institute for Mental Health (1962). **Offices Held in Other Organizations:** Member, National Advisory Board, Michigan Panel Study in Income Dynamics (1982-); SSRC-sponsored Japan-U.S. Committee on Comparative Studies of the Life Course (1981); Co-Chair, SSRC Committee on Human Development and the Life Course (1980-); Member, Sociological Research Association (1979-); Society for Research in Child Development (Nominations Committee, 1979-81; Program Committee, 1976-79). **Offices, Committee Memberships and Editorial Appointments Held in ASA:** Section on Social Psychology (Chair, 1982-83; Chair, Cooley-Mead Award Committee, 1981-82; Council Member, 1971); Distinguished Contribution to Scholarship Award Selection Committee (1980); Editorial Board, *Sociology of Education* (1978-80); Council Member, Section on Sociology of the Family (1978-80); Committee on Nominations (1976-77).



### LUCIE CHENG (HIRATA)

**Present Position:** Professor of Sociology (1982-) and Director of Asian American Studies Center (1972-), University of California-Los Angeles. **Former Positions Held:** Associate Professor of Sociology (1976-82), Assistant Professor of Sociology (1971-76), University of California-Los Angeles. **Degrees:** PhD 1971, University of Hawaii. **Publications:** *Labor Immigration Under Capitalism* (co-author, 1983); "Chinese Emigration, the Sunning Railway and the Development of Toisan" in *Amerasia Journal* (co-author, 1982); "Free, Indentured, Enslaved: Chinese Prostitutes in 19th Century America" in *Signs* (1979). **Honors and Awards:** Research grants from NEH (1982) and NIMH (1979-81); Keynote speaker at various conventions; Featured in *Dipzinian* magazine (HK) in April, 1981, and in the *Los Angeles Times*, December 5, 1979. **Offices Held in Other Organizations:** California Council for the Humanities (1981-85); Honorary Director, Society for Overseas Chinese Studies, Guangdong, People's Republic of China (1981-); Board of Directors, Chinese Historical Society of Southern California (1978-80); Bureau of the Census Advisory Committee on the Asian and Pacific American Population for the 1980 Census (1976-80). **Offices, Committee Memberships and Editorial Appointments Held in ASA:** Committee on the Minority Fellowship Program (1978-80).

### MATHEW GREENWALD

**Present Position:** Director of Social Research, American Council of Life Insurance (1973-). **Former Positions Held:** Teaching Fellow in Sociology, New College of Hofstra (1971-73); Instructor of Sociology, Douglass College (1970-71); Teaching Assistant, Rutgers University (1968-70). **Degrees:** PhD 1976, MPhil 1970, MA 1969, Rutgers University. **Publications:** "Acquiring Information About a Difficult Purchase Decision" in *Improving the Quality of Economic and Survey Data* (co-author, forthcoming); "Trends in Employment of Sociologists" in *Applied Sociology: Roles and Activities of Sociologists in Diverse Settings* (co-author, forthcoming); "Health Promotion and Health Insurance" in *Strategies for Public Health* (1981); "Research in Advertising" in *Life Advertiser* (1979); "The Mood of American Youth" in *Horizons USA* (1977). **Honors and Awards:** *Who's Who in the East* (1982); *Dictionary of International Biography* (1982); National Science Foundation Institutional Grant, Hofstra University (1972); Social Research Grant, Institute of Life Insurance (1972); Edwin E. Aldrin Fund for Advancement of Knowledge (1971-72); Federal Trainee, New Jersey College of Medicine and Dentistry (1970); National Science Foundation Traineeship (1967-68). **Offices Held in Other Organizations:** Member, Advisory Council, Association for Consumer Research (1983-85); Co-Chair, Nominations Committee, District of Columbia Sociological Society (1983); Eastern Sociological Society (Co-Chair, Committee on the Profession,



1979; Committee on Employment, 1977-78, Chair, 1978). **Offices, Committee Memberships and Editorial Appointments Held in ASA:** Section on Sociological Practice (Chair, Committee on Alternate Career Pathways, 1982; Co-editor, *Newsletter*).

### ALAN C. KERCKHOFF

**Present Position:** Professor and Chair, Duke University (1958-). **Former Positions Held:** Visiting Scholar, Nuffield College, University of Oxford (Spring 1980); Visiting Scholar, University of Stockholm (Fall 1979); Assistant Professor, Vanderbilt University (1957-58, 1953-55). **Degrees:** PhD 1954, MA 1951, University of Wisconsin-Madison; AB 1949, Oberlin College. **Publications:** *Socialization Processes Over the Life Course* (in press); *Longitudinal Perspectives on Educational Attainment* (ed., 1980); *Ambition and Attainment: A Study of Four Samples of American Boys* (1974); *Socialization and Social Class* (1972); *The June Bug: A Study of Hysterical Contagion* (1968). **Honors and Awards:** National Science Foundation Senior Postdoctoral Fellow, University of London (1971-72), Stanford University (1965-66). **Offices Held in Other Organizations:** Southern Sociological Society (Chair, Publications Committee, 1981-83; President, 1975-76; Member, Executive Committee, 1974-79, 1961-63); Chair, Human Development Study Section, NIH (1978-80); Advisory Editor, *Social Forces* (1969-71). **Offices, Committee Memberships and Editorial Appointments Held in ASA:** Council Member, Section on the Sociology of Education (1980-82); Editor, *Sociology of Education* (1979-81); Sorokin Award/Distinguished Contribution to Scholarship Award Selection Committee (1978-80; Chair, 1980); Chair, Committee on Awards Policy (1979); Associate Editor, *American Sociological Review* (1976-78); Committee on Sections (1974-75).



### JACK LADINSKY

**Present Position:** Professor of Sociology, University of Wisconsin-Madison (1961-). **Degrees:** PhD 1962, University of Michigan-Ann Arbor; MA 1957, BS 1954, University of Missouri-Columbia. **Publications:** "The Professions" in *Pharmacy Practice: Social and Behavioral Aspects* (1981); "Disputes and the Criminal Justice System" in *Wisconsin Social* (1980); "Social Integration, Leisure Activity, Media Exposure, and Lifestyle Enhancement" in *The New Jersey Income Maintenance Experiment* (co-author, 1977); "The Traffic in Legal Services: Lawyer-Seeking Behavior and the Channel of Clients" in *Law and Society Review* (1976). **Offices Held in Other Organizations:** Editor, *Law & Society Newsletter* (1980-); University of Wisconsin-Madison (Director, Behavioral Science & Law Undergrad Major, 1975-; Committee on Faculty Rights and Responsibilities, Faculty Senate, 1979-82, Chair, 1980-82); Associate Editor, *Law & Society Review* (1979-82); Social Science Research Council (Committee on Legal Indicators, 1976-79; Committee on Work and Personality in Middle Years, 1972-79); Midwest Sociological Society (Committee on Academic Freedom and Responsibility, 1975-77, Chair, 1976-77); State Director for Wisconsin, 1973-75). **Office, Committee Memberships and Editorial Appointments Held in ASA:** Committee on Freedom of Research and Teaching (1978-80, 1971-76, Co-Chair, 1979-80); Council Member, Section on Organizations & Occupations (1977-79).



### CORA BAGLEY MARRETT

**Present Position:** Professor, University of Wisconsin-Madison (1974-). **Former Positions Held:** Assistant to Associate Professor, Western Michigan University (1969-74); Assistant Professor, University of North Carolina-Chapel Hill (1968-69). **Degrees:** PhD 1968, MA 1965, University of Wisconsin; BA 1963, Virginia Union University. **Publications:** "The President's Commission: Its Analysis of the Human Equation" in *Accident at Three Mile Island: The Human Dimensions* (1982); *Research in Race and Ethnic Relations* (ed., 1982); "Organizational Issues in Accident Analysis" in *Society* (1981); "Influences on the Rise of New Organizations" in *Administrative Science Quarterly* (1980); "On the Evolution of Women's Medical Societies" in *Bulletin of the History of Medicine* (1979). **Honors and Awards:** Fellow, Center for Advanced Study in the Behavioral Sciences (1976-77); Fellow, National Academy



of Sciences (1973-74). **Offices Held in Other Organizations:** National Committee for Research on the 1980 Census (1981-); Chair, Committee on Equal Opportunities in Science and Technology, National Science Foundation (1981-); Board of Directors, Social Science Research Council (1973-80); President's Commission on the Accident at Three Mile Island (1979); Editorial Board, *Social Science Quarterly* (1972-). **Offices, Committee Memberships and Editorial Appointments Held in ASA:** 1983 Program Committee; Committee on the Executive Office and Budget (1981-83); Editorial Board, *Sociology of Education* (1981-83); 1978 ISA Travel Grants Committee; Editorial Board, *The American Sociologist* (1973-75); Committee on the Minority Fellowship Program (1974); Committee on the Status of Women in Sociology (1971-74; Chair, 1973-74); Committee on Committees (1972-73); Committee on Teaching Social Studies in Secondary Schools (1971-72); Committee on Rights and Privileges of Membership (1970).

### ROBERTA G. SIMMONS

**Present Position:** Professor of Sociology, University of Minnesota (1976-). **Former Positions Held:** Assistant to Associate Professor of Sociology and Psychiatry, University of Minnesota (1969-72); Staff Fellow, NIMH Laboratory of Socio-Environmental Studies (1966-68); Assistant Professor, Columbia University General Studies (1966). **Degrees:** PhD 1964, MA 1961, Columbia University; BA 1959, Wellesley College. **Publications:** *Research in Community and Mental Health*, Vol. 1, 2 (ed., 1979, 1981); "Entry into Early Adolescence: The Impact of School Structure, Puberty, and Early Dating on Self-Esteem" in *American Sociological Review* (co-author, 1979); *Gift of Life: The Social and Psychological Impact of Organ Transplantation* (co-author, 1977); "Disturbance in the Self-Image at Adolescence" in *American Sociological Review* (co-author, 1973); *Black and White Self-Esteem: The Urban School Child* (co-author, 1972). **Honors and Awards:** National Institute of Mental Health Research Scientist Award (1980-84); Guggenheim Fellowship (1980); Sociological Research Association (1978-); National Institute of Mental Health Research Scientist Development Award (1970-79). **Offices Held in Other Organizations:** Advisory Subpanel for Sociology, National Science Foundation (1982-83); Society for Research in Child Development (Review Panel Member 1981-83 Biennial meetings, 1982-83; Social Policy Committee, 1979-81); Midwest Sociological Society (Committee on Resolutions, 1980-83; Committee on Publications, 1975-78); Consulting Editor, *The Journal of Early Adolescence* (1981); Committee on Child Development Research and Policy, National Research Council/National Academy of Sciences (1977-81); Head of Research Papers for annual meeting, North Central Sociological Association (1973-74). **Offices, Committee Memberships and Editorial Appointments Held in ASA:** Editorial Board, *American Sociological Review* (1983-85); 1984 Program Committee; 1983 Program Committee; Editorial Board, *Journal of Health and Social Behavior* (1979-81); Nominations Committee, Section on Social Psychology (1977); Editorial Board, *Sociology of Education* (1976-78); Committee on Nominations (1976-77).



### GAYE TUCHMAN

**Present Position:** Professor, Queens College and the Graduate Center, City University of New York (1981-); Associate Professor, Queens College and the Graduate Center, CUNY (1977-81); Assistant Professor, Queens College (1972-77); Assistant Professor, State University of New York-Stony Brook (1969-72). **Degrees:** PhD 1969, MA 1967, BA 1964, Brandeis University. **Publications:** "Culture as Resource" in *Media, Culture & Society* (1982); "Edging Women Out: Structure of Opportunity and the Victorian Novel" in *Signs* (co-author, 1980); *Making News: A Study in the Construction of Reality* (1978); *Hearth and Home: Images of Women in the Mass Media* (co-author, 1978); *The TV Establishment: Programming for Power and Profit* (1974). **Honors and Awards:** Fellow, Center for Advanced Study in the Behavioral Sciences (1984-85); Principal Co-investigator, NIMH Training Grant (1980-83); Gellman Award, Eastern Sociological Society (1981); Principal Investigator, NEH grant (1979-80); Merit Award, NY Metropolitan Chapter, Sociologists for Women in Society (1979); Principal Investigator, Ford Foundation grant (1978-79); listings in various *Who's Whos*. **Offices Held in Other Organizations:** Eastern Sociological Society (Vice President, 1982-83; Council, 1977-80); Editorial Board, *Journal of Communication* (1982-); Editorial Board, *Signs* (1979-); Editorial Board, *Journal of Broadcasting* (1977-79); Editorial Board, *Pacific Sociological Review* (1977-79); Society for the Study of Social Problems (Board of Directors, 1976-79; Chair, Program Committee, 1974); Sociologists for Women in Society (Executive Vice President, 1975-77; Co-Founder, 1970); Editorial Board, *Urban Life* (1975-). **Offices, Committee Membership and Editorial Appointments Held in ASA:** Distinguished Contribu-



## Council (continued)

tion to Scholarship Award Selection Committee (1982-84); Editorial Board, *Contemporary Sociology* (1981-83); Committee on Nominations (1979-80); Committee on the Status of Women in Sociology (1977-79); Committee on Public Information (1973).

### MICHAEL USEEM

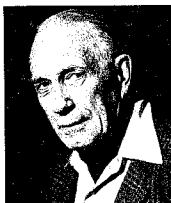
**Present Position:** Professor of Sociology, Boston University (1974-). **Former Positions Held:** Visiting Member, Sociology Board, University of California-Santa Cruz (1980-81); Assistant Professor, Department of Sociology, Harvard University (1970-74). **Degrees:** PhD 1970, MA 1966, Harvard University; BS 1964, University of Michigan. **Publications:** *The Inner Circle: Large Corporations and the Rise of Business Political Activity in the U.S. and U.K.* (in press); "Classwide Rationality in the Politics of Managers and Directors of Large Corporations in the United States and Great Britain" in *Administrative Science Quarterly* (1982); "Corporations and the Corporate Elite" in *Annual Review of Sociology* (1980); *Protest Movements in America* (1975); *Conscription, Protest and Social Conflict* (1973). **Honors and Awards:** Research Grants, National Science Foundation (1981-83, 1978-80); Research Grant, National Endowment for the Arts (1976-77); Research Grant, Spencer Foundation (1972-73); Research Grant, National Institute of Education and U.S. Office of Education (1971-74). **Offices Held in Other Organizations:** C. Wright Mills Award Committee, Society for the Study of Social Problems (1984, 1974); Eastern Sociological Society (Committee on the Profession, 1981-83; Nominations Committee, 1980-81); Corresponding Editor, *Theory and Society* (1981-); Editorial Board, *Journal of Political and Military Sociology* (1977-); Editorial Board, *Social Problems* (1977-81); Research Proposal Review Panel, National Endowment for the Arts (1979, 1977); Research Proposal Review Panel, National Institute for Mental Health (1977-78); Research Advisory Committee, American Council on Education (1972-73). **Offices, Committee Memberships and Editorial Appointments Held in ASA:** Editorial Board, *Contemporary Sociology* (1981-83); Committee on Committees (1981-82; Chair, 1982); Editorial Board, *The American Sociologist* (1976-78); Committee on the Status of Women in Sociology (1976-78).



(1976-77); Editorial Board, *Journal of Political and Military Sociology* (1975-); Editorial Board, *Political Science Quarterly* (1973-); President, Society for the Study of Social Problems (1967-68); Eastern Sociological Society (President, 1964-65; Vice President, 1962-63); Editorial Board, *Dissent* (1953-). **Offices, Committee Memberships and Editorial Appointments Held in ASA:** Editorial Board, *Rose Monograph Series* (1980-82); Committee on the Status of Women in Sociology (1979-81); President (1975); Council Member, Section on Theoretical Sociology (1972-74); Committee on Professional Ethics (1969-72; Chair, 1970-72); ASA Council (1969-71, 1967; Committee on Freedom of Research and Teaching, 1969-71; Committee on Resolutions, 1970); Committee on International Order (1965-67).

### CHARLES H. PAGE

**Present Position:** Robert H. MacIver Professor (Emeritus) of Sociology, University of Massachusetts-Amherst (1968-75). **Former Positions Held:** Provost, Stevenson College, and Professor of Sociology, University of California-Santa Cruz (1965-68); Professor of Sociology and Chair, Department of Sociology and Anthropology, Princeton University (1960-65); Professor of Sociology and Chair, Department of Sociology and Anthropology, Smith College (1946-60). **Degrees:** PhD 1940, Columbia University; AB 1931, University of Illinois. **Publications:** *Fifty Years in the Sociological Enterprise* (1982); *Sport and Society* (co-author, 1973); *Sociology and Contemporary Education* (editor and co-author, 1964); *Society: An Introductory Analysis* (co-author, 1949); *Class and American Sociology* (1940, rev. 1969). **Honors and Awards:** Merit Award, Eastern Sociological Society (1975); Robert M. MacIver Professor of Sociology (1973-); Honorary Fellow, Adlai E. Stevenson College (1967-). **Offices Held in Other Organizations:** Commission on Human Relations, Santa Cruz, CA (1966-68); Consulting Editor in Sociology, Random House-Knopf, Inc. (1955-80); Consulting Editor in Sociology and Anthropology, Doubleday & Co. (1953-55); Field Secretary, National Refugee Society (1940-41); Charter Member, Democratic Socialist Organization. **Offices, Committee Memberships and Editorial Appointments Held in ASA:** Editorial Board, *Rose Monograph Series* (1981-83); 1978 ISA Travel Grants Committee; Committee on Publications (1974-75, 1961-64); Committee on the Feasibility of Archives (1971-72); Committee on Nominations (1968-69); Committee on Organizational Relationships (1964-66); MacIver Award Selection Committee (1963-65); Editor, *American Sociological Review* (1958-60); ASA Council (1955-60; Executive Committee, 1958-60).



## Committee on Nominations

### District 1

#### KIYOSHI IKEDA

**Present Position:** Professor and Chair, Department of Sociology, University of Hawaii-Manoa (1976-). **Previous Appointments:** Instructor (1958), Assistant Professor to Professor (1960-76), Oberlin College; Assistant Professor, University of Wisconsin-Madison (1958-60). **Degrees:** PhD 1959, Northwestern University; MA 1955, BA 1950, University of Hawaii. **Offices Held in Other Organizations:** NIMH Research Education Review Committee (1980-83); Charter Founder, Hawaii Sociological Association (1980); Committee on the Profession, Ohio Valley Sociological Association (1965). **Offices, Committee Memberships and Editorial Appointments Held in ASA:** Committee on the Status of Racial and Ethnic Minorities in Sociology (1980-82; Chair, 1982); Membership Committee (1971-72); Committee on the Role of Teacher-Sociologists (1970-71).



#### ANN SWIDLER

**Present Position:** Assistant Professor, Stanford University (1979-). **Previous Appointments:** Assistant Professor, Harvard University (1975-79). **Degrees:** PhD 1975, University of California-Berkeley; BA 1966, Harvard University. **Offices, Committee Memberships and Editorial Appointments Held in ASA:** Editorial Board, *American Sociological Review* (1982-84).



## Committee on Publications

### CHARLES E. BIDWELL

**Present Position:** Professor of Sociology and Education, University of Chicago (1971-). **Former Positions Held:** Assistant to Associate Professor, University of Chicago (1961-71); Lecturer on Sociology, Harvard University (1959-61). **Degrees:** PhD 1956, University of Chicago. **Publications:** *The Analysis of Educational Productivity* (co-author, 1980); "Problems of Multilevel Measurement: The Case of School and Schooling" in *Issues in Aggregation* (co-author, 1980); "The Sociology of the School and Classroom" in *Sociological Theory and Research* (1980); "School District Organization and Student Achievement" in *American Sociological Review* (co-author, 1975). **Honors and Awards:** Guggenheim Fellowship (1971-72). **Offices Held in Other Organizations:** American Educational Research Association (Vice President; Chair, Publications Committee); Editor, *American Journal of Sociology* (1973-78). **Offices, Committee Memberships and Editorial Appointments Held in ASA:** Section on Sociology of Education (Chair, 1979; Council Member, 1976-78); Editor, *Sociology of Education* (1969-72).

### LEWIS A. COSER

**Present Position:** Distinguished Professor of Sociology, State University of New York-Stony Brook (1968-). **Former Positions Held:** Lecturer to Professor, Brandeis University (1951-68); Lecturer, The College, University of Chicago (1948-50). **Degrees:** PhD 1954, Columbia University. **Publications:** *The Culture and Commerce of Publishing* (co-author, 1982); *Continuities in the Study of Social Conflict* (1967, 1973, 1976); *Sociology Through Literature* (ed., 1963, rev. 1972); *The American Communist Party, A Critical History* (co-author, 1957, 1963, 1974); *Sociological Theory* (co-author, 1957, 1963, 1969, 1976, 1982); *The Functions of Social Conflict* (1956, 1961, 1964, 1967, 1971, 1978). **Honors and Awards:** Fellow, American Academy of Arts and Sciences (1982-); Fellow, Center for Advanced Study in the Behavioral Sciences (1979-80, 1968-69); Fellow, Clare Hall, Cambridge, England (1975-76); Fellow, Guggenheim Memorial Foundation (1975-76); Fulbright Senior Research Scholar, Oslo, Norway (1961). **Offices Held in Other Organizations:** American representative, *European Journal of Sociology* (1978-); Editorial Board, *American Journal of Sociology*



### RICHARD L. SIMPSON

**Present Position:** Kenan Professor of Sociology, University of North Carolina-Chapel Hill (1980-). **Former Positions Held:** Assistant Professor to Professor, University of North Carolina-Chapel Hill (1958-80); Assistant Professor of Sociology, Northwestern University (1957-58); Instructor in Sociology, Pennsylvania State University (1956-57). **Degrees:** PhD 1956, University of North Carolina-Chapel Hill; MA 1952, Cornell University; AB 1950, University of North Carolina-Chapel Hill. **Publications:** "Occupational Recruitment, Retention, and Labor Force Cohort Representation" in *American Journal of Sociology* (co-author, 1982); *Research in the Sociology of Work*, Vol. 1 (co-editor, 1981); "Three Female Roles in Television Commercials" in *Sex Roles* (co-author, 1981); "Labor Force Integration and Southern U.S. Textile Unionism" in *Research in the Sociology of Work* (1981); "Vance, Rupert B." in *International Encyclopedia of the Social Sciences* (1979). **Offices Held in Other Organizations:** Consulting Editor, *American Journal of Sociology* (1976-78); Southern Sociological Society (Executive Committee, 1973-75, 1962-65; President, 1971-72; First Vice President and Program Chair, 1968-69; and other committees); Advisory Panel for Sociology, National Science Foundation (1973-75); Social Sciences Training Review Committee, NIMH (1971-73); *Social Forces* (Editor, 1969-72; Book Review Editor, 1964-69); Executive Committee, United Chapters of Alpha Kappa Delta (1966-69). **Offices, Committee Memberships and Editorial Appointments Held in ASA:** Council Member, Section on Organizations and Occupations (1980-82); Spivack Award Selection Committee (1977-79; Chair, 1979); Committee on Committees (1972-73; Chair, 1973); Chair, Committee to Study Annual Meetings (1970-71); Committee on Nominations (1968-69); Committee on Regional Affairs (1968-69); Associate Editor, *The American Sociologist* (1968-70).



### District 2

#### LUTHER B. OTTO

**Present Position:** Director, Youth Studies Division, and Senior Research Scientist, Boys Town Center (1976-). **Former Positions Held:** Acting Director, Social Research Center (1975-76), Associate Professor of Sociology (1973-76), Washington State University. **Degrees:** PhD 1973, MS 1963, University of Wisconsin-Madison; MDiv 1962, Concordia Theological Seminary. **Offices Held in Other Organizations:** Commissioner on Career Development of Young Adults, National Vocational Association (1982-83); National Institute of Mental Health (Mental Health Behavioral Sciences Research Review Committee, 1982-; Basic Sociocultural Research Review Committee, 1980-82); Editor, *Entry Into Careers Series*, Lexington Book (1981-); Board of Directors, H. Richard Young Hospital and Lutheran Medical Center, Omaha, NE (1979-). **Offices, Committee Memberships and Editorial Appointments Held in ASA:** Editorial Board, *Sociology of Education* (1978-80).



#### MILDRED A. SCHWARTZ

**Present Position:** Professor of Sociology (and affiliate, Political Science), University of Illinois-Chicago (1966-). **Previous Appointments:** Visiting Professor, Harvard University (1973). **Degrees:** PhD 1965, Columbia University; MA 1956, BA 1954, University of Toronto. **Offices Held in Other Organizations:** Nominating Committee, American Political Science Association (1982-84); Social Science History Association (Executive Committee, 1983, 1980-81; Nominating Committee, 1981-82); Board of Overseers, National Election Studies (1978-82); Committee on Social Psychology Award, American Association for the Advancement of Science (1976, 1975). **Offices, Committee Memberships and Editorial Appointments Held in ASA:** Spivack Award Selection Committee (1977-79).



## Committee on Nominations (continued)

### WAYNE J. VILLEMEZ

**Present Position:** Professor of Sociology, University of Illinois-Chicago (1978-). **Previous Appointments:** Associate Professor and Chair (1975-78), Assistant Professor to Associate Professor (1970-75), Department of Social Psychology and Sociology, Florida Atlantic University. **Degrees:** PhD 1970, MA 1967, University of Texas-Austin; BA 1964, University of Notre Dame. **Offices Held in Other Organizations:** Associate Editor, *Social Problems* (1978-); Associate Editor, *Social Forces* (1978-81).



### District 3

### JOSEPH S. HIMES

**Present Position:** Excellence Fund Professor Emeritus, University of North Carolina-Greensboro. **Previous Appointments:** Excellence Fund Professor, University of North Carolina-Greensboro (1969-80); Professor, North Carolina Central University (1946-69). **Degrees:** PhD 1938, Ohio State University; AM 1932, AB 1931, Oberlin College. **Offices Held in Other Organizations:** President, North Carolina Sociological Association (1971); President, Southern Sociological Society (1965-66). **Offices, Committee Memberships and Editorial Appointments Held in ASA:** Distinguished Contribution to Scholarship Award Selection Committee (1980-82); Chair, 1982; Committee on Nominations (1979-80, 1974-75); DuBois-Johnson-Frazier Award Selection Committee (1976-79, Chair, 1976); 1974 Program Committee; 1975 Program Committee; Committee on Regional Affairs (1972-73); Committee on Teaching Undergraduate Sociology (1969-71).



### JOANE NAGEL

**Present Position:** Assistant Professor, Department of Sociology, University of Kansas (1977-). **Degrees:** PhD 1977, Stanford University; BA 1967, Bowling Green State University. **Offices Held in Other Organizations:** Chair, Kansas Sociological Society (1978); Associate Editor, *Pacific Sociological Review* (1977-). **Offices, Committee Memberships and Editorial Appointments Held in ASA:** Nominations Committee, Section on Collective Behavior and Social Movements (1981-82).



### District 4

### RICHARD RUBINSON

**Present Position:** Associate Professor, Department of Social Relations, Johns Hopkins University (1974-). **Degrees:** PhD 1974, Stanford University; BA 1968, University of Michigan. **Offices Held in Other Organizations:** Consulting Editor, *American Journal of Sociology* (1981-83). **Offices, Committee Memberships and Editorial Appointments Held in ASA:** Chair, Section on Political Economy of the World-System (1979-81); Editorial Board, *American Sociological Review* (1979-81).



### HOWARD F. TAYLOR

**Present Position:** Professor of Sociology, Princeton University (1973-). **Previous Appointments:** Assistant Professor to Associate Professor of Sociology, Syracuse University (1968-73); Assistant Professor of Sociology, Illinois Institute of Technology (1966-68). **Degrees:** PhD 1966, MA 1964, Yale University. **Offices Held in Other Organizations:** Member, Board of Trustees, Hiram College (1981-87); Editorial Board, *Sociological Methods and Research* (1980-83); Editorial Board, *American Journal of Sociology* (1975-77); Executive Committee, Association of Black Sociologists (1973-77). **Offices, Committee Memberships and Editorial Appoint-**



**ments Held in ASA:** Editorial Board, *Social Psychology Quarterly* (1981-83); 1980 Program Committee; 1979 Program Committee; Committee on Nominations (1977-78); Award Committee, Section on Social Psychology (1976-79); Committee on the Status of Racial and Ethnic Minorities in Sociology (1977); Stouffer Award Selection Committee (1974-76); Editorial Board, *Sociology of Education* (1974-76); Committee on Certification in Social Psychology (1971).

### District 5

### EVELYN NAKANO GLENN

**Present Position:** Assistant Professor, Boston University (1972-). **Previous Appointments:** Visiting Assistant Professor, University of Hawaii (1983); Research Affiliate, Radcliffe Institute (1974); Lecturer, Harvard Extension (1971-73). **Degrees:** PhD 1971, Harvard University; BA 1962, University of California-Berkeley. **Offices Held in Other Organizations:** Editorial and Publications Committee, Society for the Study of Social Problems (1980-); Chair, 1982-83; Advisory Committee, Center for Research on Women, Memphis State University (1982-); President, Massachusetts Sociological Association (1979-80); Newsletter Editor, Sociologists for Women in Society (1975-77). **Offices, Committee Memberships and Editorial Appointments Held in ASA:** DuBois-Johnson-Frazier Award Selection Committee (1981-85); Committee on the Status of Women in Sociology (1981-83); Committee on the Status of Racial and Ethnic Minorities in Sociology (1978-80).



### KATHERINE O'SULLIVAN SEE

**Present Position:** Assistant Professor, James Madison College, Michigan State University (1977-). **Previous Appointments:** Research Associate and Rockefeller Fellow in Human Rights, Department of Sociology and Center for Study of Human Rights, Columbia University (1980-81). **Degrees:** PhD 1979, MA 1974, University of Chicago; BA 1970, Connecticut College. **Offices Held in Other Organizations:** Secretary, Research Committee on Ethnic, Race and Minority Relations, International Sociological Association (1977-82); Co-Chair, Michigan Sociologists for Women in Society (1978).



### District 6

### MYRA MARX FERREE

**Present Position:** Associate Professor of Sociology, University of Connecticut (1981-). **Previous Appointments:** Assistant Professor of Sociology, University of Connecticut (1976-81); Lecturer, Department of Sociology, Tufts University (1976); Senior Research Associate, Laboratory for Psychosocial Studies, Boston College (1975-76). **Degrees:** PhD 1976, Harvard University; AB 1971, Bryn Mawr College. **Offices Held in Other Organizations:** Participant, International Interdisciplinary Congress on Women, Haifa, Israel (1981); Committee on Women, Eastern Sociological Society (1977-79); Chair, 1978-79. **Offices, Committee Memberships and Editorial Appointments Held in ASA:** Editorial Board, *Contemporary Sociology* (1981-83); Award Committee, Section on Social Psychology (1977-80).



### RICHARD D. SCHWARTZ

**Present Position:** Professor of Law and Professor of Sociology, Maxwell School, Syracuse University (1977-). **Previous Appointments:** Dean & Provost, Faculty of Law and Jurisprudence, State University of New York-Buffalo (1971-76); Associate and Full Professor of Sociology (1961-71), Professor of Law (1966-71), Northwestern University; Associate Professor of Sociology and Law, Yale University (1956-61). **Degrees:** PhD 1952, BA 1947, Yale University. **Offices Held in Other Organizations:** Committee on Law Enforcement and the Administration of Justice, National Academy of Sciences (1976-); Law & Society Association (Chair, Committee on Organization, Administration and Structure, 1980-82); President, 1972-75; Review Panelist—NSF (1978-81), NEH (1972-77), Russell Sage Residencies in Law & Social Science



(1971-77); Project Director, Training Lawyers as Criminal Justice Specialists, Buffalo (1974-77); Founder and first editor, *Law & Society Review* (1966-69). **Offices, Committee Memberships and Editorial Appointments Held in ASA:** Committee on Professional Ethics (1982-85); Committee on Regulation of Research (1978-81); Committee on the Profession (1978-81); Committee on Legal Protections in Social Research (1968-71); Committee on International Order (1965-67).

## Committee on Committees

### District 1

### VERN L. BENGTON

**Present Position:** Professor of Sociology and Director, Gerontology Research Institute, University of Southern California (1981-). **Previous Appointments:** Visiting Professor of Sociology, University of Stockholm (1979-80); Senior Research Associate, California Institute of Technology (1975-76); Project Coordinator, University of Chicago (1965-67). **Degrees:** PhD 1967, MA 1965, University of Chicago; BA 1963, North Park College. **Offices Held in Other Organizations:** Research Grants Review Panel, NIA (1982-85); Chair-Elect, Behavioral and Social Sciences Section, American Gerontological Society (1982); Initial Review Committee, Center on Mental Health and Aging, NIMH (1978-82); Council, Section on Research and Theory, National Council on Family Relations (1974-76); Council, Division 20, American Psychological Association. **Offices, Committee Memberships and Editorial Appointments Held in ASA:** Council Member, Section on the Sociology of Aging (1981-83); Editorial Board, *Sociology of Education* (1980-82).



### JONATHAN H. TURNER

**Present Position:** Professor of Sociology, University of California-Riverside (1969-). **Previous Appointments:** Assistant Professor of Sociology, University of Hawaii (1968-69). **Degrees:** PhD 1968, MA 1966, Cornell University; BA 1965, University of California-Santa Barbara. **Offices Held in Other Organizations:** Consulting Editor, *American Journal of Sociology* (1981-); Associate Editor, *Sociological Quarterly* (1981-); Vice President, Pacific Sociological Association (1981). **Offices, Committee Memberships and Editorial Appointments Held in ASA:** Editorial Board, *Sociological Theory* (1980-83); Section on Theoretical Sociology (Newsletter Editor, 1981-; Council Member, 1979-81).



### District 2

### LARRY J. GRIFFIN

**Present Position:** Associate Professor of Sociology, Indiana University (1977-). **Degrees:** PhD 1976, Johns Hopkins University; MA 1973, University of Mississippi; BS 1969, Delta State University. **Offices, Committee Memberships and Editorial Appointments Held in ASA:** Deputy Editor, *American Sociological Review* (1982-85); Editorial Board, *Sociology of Education* (1978-80).



### JEYLAN MORTIMER

**Present Position:** Professor of Sociology, University of Minnesota (1974-). **Previous Appointments:** Assistant Professor, University of Maryland (1971-73). **Degrees:** PhD 1972, MA 1967, University of Michigan; BA 1965, Tufts University. **Offices Held in Other Organizations:** Editorial Board, *Sociology of Work and Occupations* (1980); Midwest Sociological Society (Award Committee, Caroline Rose Student Paper Competition, 1982); Committee on Standards, Training and Employment, 1979-; Member, Governor's Task Force on Work and the Family (1981-82); Consulting Editor, *American Journal of Sociology* (1978-80). **Offices, Committee Memberships and Editorial Appointments Held in ASA:** *Midwest Regional Newsletter* Editor, Section on Organizations & Occupations (1980-82); Nominations Committee, Section on Social Psychology (1980-82); Chair, 1980-81.





Committee on Committees (continued)

District 3

CRAIG CALHOUN

**Present Position:** Assistant Professor, University of North Carolina-Chapel Hill (1977-). **Degrees:** DPhil 1979, MA 1974, Columbia University; BA 1972, University of Southern California. **Offices Held in Other Organizations:** Associate Editor, *Social Forces* (1978-); Program Committee, Division A, American Educational Research Association (1973).



GEORGE J. McCALL

**Present Position:** Professor, University of Missouri-St. Louis (1972-). **Previous Appointments:** Associate Professor to Professor, University of Illinois-Chicago Circle (1967-72); Instructor to Associate Professor, University of Illinois-Urbana (1964-68); Instructor, University of Iowa (1964). **Degrees:** PhD 1965, MA 1963, Harvard University; BA 1961, University of Iowa. **Offices Held in Other Organizations:** DHHS Rape Prevention and Control Advisory Committee (1980-); Editorial Board, *Sociological Methods and Research* (1975-); Editorial Board, *Urban Life* (1971-); Editorial Board, *Journal for Theory of Social Behavior* (1975-77); Visiting Scientist, NIMH (1975-76); Editorial Board, *Social Problems* (1969-74); Editorial Board, *Sociological Quarterly* (1968-73); Elections and Nominations Committee, Midwest Sociological Society (1969-70). **Offices, Committee Memberships and Editorial Appointments Held in ASA:** Council Member, Section on Social Psychology (1981-84); Editorial Board, *American Sociological Review* (1975-77); Editorial Board, *Sociometry* (1972-74).



District 4

JERALD HAGE

**Present Position:** Chair and Professor of Sociology, University of Maryland-College Park (1978-). **Previous Appointments:** Assistant Professor to Professor, University of Wisconsin-Madison (1964-78); Visiting Professor, Ecole de Mines, Paris, France (1975-76); Visiting Lecturer, University of Aston, Birmingham, England (1968). **Degrees:** PhD 1963, Columbia University; BBA 1955, University of Wisconsin-Madison. **Offices Held in Other Organizations:** Advisory Board, Directorate of Engineering, National Science Foundation (1982-); Board Member, Parkmont School, Washington, DC (1982-); Editorial Board, *Organizational*



*Studies* (1978-); Editorial Board, *Social Forces* (1972-75); Editorial Board, *Administrative Science Quarterly* (1968-71). **Offices, Committee Memberships and Editorial Appointments Held in ASA:** Committee on Freedom of Research and Teaching (1982-84; Chair, 1983); Section on Theoretical Sociology (Secretary, 1981-83; Newsletter Editor, 1978-80; Council Member, 1977-79); Editorial Board, *Sociological Theory* (1980-83); Section on Organizations and Occupations (Chair, 1981-82; Council Member, 1974-76).

JOANNE MILLER

**Present Position:** Program Director for Sociology, National Science Foundation (1982-). **Previous Appointments:** Research Sociologist, Laboratory of Socio-Environmental Studies, NIMH (1975-82). **Degrees:** PhD 1975, MS 1972, BA 1970, University of Wisconsin-Madison. **Offices Held in Other Organizations:** Interagency Committee on Population Research (1982-); Eastern Sociological Society (Committee on the Profession, 1982-83; Membership Committee, 1981-82; Committee on Papers, 1980-81); Co-Chair, Capital Area Chapter, Sociologists for Women in Society (1980-82). **Offices, Committee Memberships and Editorial Appointments Held in ASA:** Deputy Editor, *Journal of Health and Social Behavior* (1982-84).



District 5

LEWIS M. KILLIAN

**Present Position:** Professor, University of Massachusetts-Amherst (1969-). **Previous Appointments:** Professor and Chair, University of Connecticut (1968-69); Professor of Sociology and Chair, Florida State University (1952-68); Assistant Professor of Sociology, University of Oklahoma (1949-52). **Degrees:** PhD 1949, University of Chicago; MA 1941, AB 1940, University of Georgia. **Offices Held in Other Organizations:** Editorial Advisory Board, *New Community: Journal of the Commission for Racial Equality*, London (current); Executive Committee, Eastern Sociological Society (1970-71); Executive Committee, Society for the Study of Social Problems (1968-69); First Vice President, Southern Sociological Society (1967-68). **Offices, Committee Memberships and Editorial Appointments Held in ASA:** Council Member, Section on Racial and Ethnic Minorities (1981); ASA Council (1976-78; Committee on Award Policies, 1978; Committee on Election Procedures, 1979); DuBois-Johnson-Frazier Award Selection Committee (1973-75); Committee on Nominations (1973-74); Editorial Board, *American Sociological Review* (1972-74); Committee on Freedom of Research and Teaching (1970-72); Committee on Social Studies Curriculum in American Secondary Schools (1966-71); Council Member, Section on Social Psychology (1970-71); Committee on Committees (1969-70); Committee on Public Information (1967-69; Chair, 1969).



ALDON D. MORRIS

**Present Position:** Assistant Professor of Sociology, University of Michigan (1980-). **Previous Appointments:** Instructor, Department of Sociology, State University of New York-Stony Brook (1977-78). **Degrees:** PhD 1979, MA 1979, State University of New York-Stony Brook; BS 1974, Bradley University.



District 6

BARBARA HEYNS

**Present Position:** Professor of Sociology and Director, Center for Applied Social Science Research, New York University (1980-). **Previous Appointments:** Assistant Professor to Associate Professor of Sociology, University of California-Berkeley (1972-80); Assistant Professor, Harvard Graduate School of Education (1970-72). **Degrees:** PhD 1971, MA 1969, University of Chicago; AB 1966, University of California-Berkeley. **Offices Held in Other Organizations:** Committee on the Profession, Eastern Sociological Society (1982); National Planning Committee for High School and Beyond, NCES & NORC (1978-82); National Academy of Science Panel on Outcome Measurement (1979-80). **Offices, Committee Memberships and Editorial Appointments Held in ASA:** Committee on Regulation of Research (1982-84); Council Member, Section on Sociology of Education (1978-80); Editorial Board, *Sociology of Education* (1976-78).



JUDITH LORBER

**Present Position:** Professor of Sociology, Brooklyn College and Graduate Center, City University of New York (1972-). **Previous Appointments:** Assistant Professor, Fordham University (1970-72). **Degrees:** PhD 1971, MA 1966, New York University; BA 1952, Queens College-CUNY. **Offices Held in Other Organizations:** Advisory Editor, *Sociological Inquiry* (1981-); Society for the Study of Social Problems (Vice President-Elect, 1982-83; Board of Directors, 1975-78); Executive Committee, Eastern Sociological Society (1980-83); President, Sociologists for Women in Society (1980-82); Associate Editor, *Social Problems* (1975-78); Advisory Editor, *Sociological Symposium* (1974-77). **Offices, Committee Memberships and Editorial Appointments Held in ASA:** Committee on Nominations (1978-79); Council Member, Section on Medical Sociology (1978-79).



People

**William R. Aho**, Rhode Island College, received a \$25,000 Research Fellowship for College Teachers from the National Endowment for the Humanities to do research in Trinidad. His research topic is the race and class conflict in the struggle for the acceptance of steelband music as a legitimate form of cultural expression in Trinidad and Tobago.

**Maggie Andersen**, University of Delaware, has been awarded a National Mellon Fellowship, Wellesley College Center for Research on Women.

**Howard S. Becker**, Northwestern University, was appointed to the MacArthur Chair of Arts and Sciences at Northwestern. He has also been awarded a three-year grant from the Systems Development Foundation to pursue research on methods of representing social reality.

**Frank Biasco**, University of West Florida, has been appointed to a three-year term on the Florida state-wide Board of Psychological Examiners, which provides certification for master's level social workers, marriage counselors and

mental health workers, in addition to licensing psychologists.

**Louie A. Brown**, Valdosta State University, was elected President of the Georgia Sociological Association.

**Jan Fritz**, Georgetown University, outgoing President of the Clinical Sociology Association, was honored recently with a plaque in recognition of her outstanding leadership in furthering the efforts of clinical sociology.

**Jack Gibbs** has been named Centennial Professor at Vanderbilt University. He is the first to be so honored. Gibbs is on research leave for the year at Victoria University in British Columbia.

**Jerald Hage**, University of Maryland, has been appointed to the advisory panel for Industrial Science and Technology in the Directorate for Scientific, Technological, and International Affairs of the National Science Foundation. He is the only sociologist serving on the panel.

**Joseph Hrabo**, Iowa State University, participated in the interacademy exchange between the National Academy of Sciences and the Polish Academy of Sciences. He did a study of queuing in Cracow, Nowa Huta and Warsaw. This was his second visit to

Poland in 1982.

**Kyong-Dong Kim**, Seoul National University, formerly at North Carolina State University-Raleigh, was appointed on January 1, 1983, as Director of the Institute of Social Sciences, Seoul National University, Seoul 151, Korea. Ideas, proposals, etc., for collaborative research, conferences and the like are welcome.

**Howard A. Kurtz**, Oklahoma City University, has been named Chair of the Sociology Department at OCU. He is the author of the book *The Beaten Victim*, recently released by R & E Publishers in Palo Alto, CA.

**J. Robert Lilly**, Northern Kentucky University, was appointed Treasurer of the American Society of Criminology. He was also recently appointed to the Editorial Board of *Urban Life*.

**Baila Miller**, Jewish Federation of Chicago, has been appointed to the Illinois Commission on the Status of Women.

**Emilo Mumford**, University of Colorado Medical School, was appointed to the Committee in charge of the Behavioral Science section for the American Board of Medical Examiners. She was also recently appointed to the Editorial Board of the Journal of the American Medical Education Association.

**David Nasatir**, California State University-Dominguez Hills, is spending the first half of 1983 as a Senior Fulbright Lecturer at the Programa de Pos Graduacao em Sociologia, Instituto Universitario de Pesquisas do Rio de Janeiro, Brazil.

**Richard A. Peterson** was appointed Chair of the Department of Sociology and Anthropology at Vanderbilt University.

**William E. Snizek**, Virginia Polytechnic Institute, has been awarded a Fulbright to conduct research at the University of Leiden in the Netherlands during the spring quarter of 1983.

**Paul D. Starr**, Auburn University, is Visiting Associate Professor at the American University in Cairo, Egypt.

**Gregory Weiss**, Roanoke College, received the Virginia Social Science Award for 1982.

**Beverly Wesley**, Moorhead State University, is President-Elect of Sociologists of Minnesota.

The spring semester at the University of Delaware will find **William Chambless** as Visiting Professor at University College, Cardiff, Wales, while the

following are Visiting Professors at the Department of Sociology, University of Delaware: **Delila Amir**, Tel Aviv University; **Menachem Amir**, Hebrew University, Jerusalem; **Maureen Cain**, Cambridge University; **Richard Lewis**, University College, Cardiff.

The Department of Sociology, Northwestern University, takes pleasure in announcing two new appointments: **Arthur L. Stinchcombe** as Professor of Sociology, and **Carol Heimer** as Assistant Professor of Sociology.

1982 Charlotte W. Newcombe Fellowship Winners included the following sociologists: **Nancy T. Ammerman**, Yale University; **Lynn R. Eden**, University of Michigan; **Jeffrey M. Haydu**, University of California-Berkeley; **Craig Reinarman**, University of California-Santa Barbara; and **Margaret R. Somers**, Harvard University.

The following retirements have been noted: **James Brown**, University of Kentucky; **Abbott L. Ferriss**, Professor of Sociology Emeritus, Emory University; **Charles V. Mercer**, North Carolina State University; **Elisabeth Stojanovic**, Mississippi State University; **Willis Sutton**, University of Kentucky; and **Polly Toups**, Western Kentucky University.

## "Citizen Activists" Included on Research Review Panels at NIE

(continued from page 1)

### Unsolicited Proposals

The only grants program still operating in 1982 was the Unsolicited Proposals Program, a competition designed to encourage the development of "unique ideas relevant to the Agency's mission" that do not fall within the boundaries of grants programs planned by NIE staff. The information statement describing this competition has never announced specific topics; instead, it has stressed expansion of the "range of topics and perspectives supported by the Institute..." The prospectus issued in September 1981 did, however, describe an emphasis for the next few years on "support of research relating to issues of equity in all types of educational institutions and settings, and studies which will lead to the improvement of local educational practice".

In earlier years, proposals submitted to the Unsolicited Program that dealt with the subject matter of other grants programs were transferred to those programs. In 1982, in the absence of other competitions, all proposals were considered in the Unsolicited Program. In fact, many of the proposals had earlier been approved by other programs but not funded because of the budget cuts. Since this was the only competition, and because many of the proposals had survived earlier competitions, competition in the Unsolicited Program was more intense than in other years.

Despite its limited budget, the Unsolicited competition also began to attract the attention of officials in the Department of Education. It was one of the few pots of

discretionary money to be spent in Fiscal '82 and, in addition, the competition was expected to use more non-Federal reviewers than any other program in the department. The use of reviewers was defined as the opportunity for this administration to place its imprint on the activities of the Department of Education, activities that had been the subject of considerable debate in the 1980 elections. The Unsolicited Proposals competition, therefore, became a focus of administration policies toward education and, perhaps incidentally, toward research.

### Reviewer Selection

For the selection of reviewers, the regulations governing grants programs of the Department of Education specify the use of "groups of experts". In the past, staff made efforts to assemble slates of reviewers from a range of disciplines and with some knowledge of the varied topics represented in the Unsolicited Program. Attempts were also made to include practitioners as well as researchers; representatives of both sexes and various racial/ethnic groups; and sometimes, younger reviewers who were being "auditioned". The primary criterion for selection, however, was ability to evaluate research as evidenced by the reader's own work. Whatever the reviewer's political or religious affiliation, it was generally not known to staff members and it was not the basis for their selection.

In 1982, the review process began with the customary staff selection of appropriate slates of reviewers. At about the same time, department officials announced a

search for "new perspectives" in the use of field readers. Individuals were sought through various channels: regional offices of the department, personal contacts of new appointees at both department and institute levels, and apparently, recommendations from the Heritage Foundation, a conservative think tank. Names were assembled for the review of various kinds of grant applications, not necessarily research proposals.

The names of 117 new reviewers were sent to NIE although resumes were available for only about 40%. The original intent of personnel in the Director's office was to assign reviewers and for that purpose, staff members were requested to prepare a few phrases describing each proposal. When front office personnel were unable to select reviewers, staff members were directed to make the assignments. The rules, which the leadership refused to put in writing, were that "new" reviewers had to conduct one-half of all reviews, that each of these reviewers had to be used and that at least one had to be assigned to each proposal. After some adjustments, 82 readers were assigned to the Teaching and Learning Program (T&L); Educational Policy and Organization (EPO) received 36; and Dissemination in Practice (DIP), with very few proposals, used the other lists.

### Citizen Activists

The reviewers can be characterized in several ways. They clearly included some legitimate researchers or experts in certain fields of education, i.e., they were qualified to read research proposals. Equally apparent was the total lack of qualifications of others who were described as "citizen activist" or "parent activist". The brief information forms provided on these reviewers stressed their activities on behalf of private schools or the pro-life movement, religious affiliations and, in many cases, long-standing participation in Republican Party activities. Appropriate educational or research credentials were notably lacking.

Also of concern to NIE staff members was the absence of reviewers appropriate to the set of proposals that had been received. Thus, Teaching and Learning was provided with numerous reviewers specializing in developmental reading but none with expertise in mathematics or technology even though a number of proposals dealt with these areas. Educational Policy and Organization was assigned readers with considerable knowledge of private school education and educational vouchers but none who were familiar with issues of desegregation or faculty work, both subjects represented by several proposals.

Where these could be determined, the professional affiliations of the new reviewers were also at variance with the proposals. The largest number of applications came from the field of education and the largest number of reviewers also came from that field. However, while T&L had

several proposals in linguistics to review, none of the readers were from that area. EPO was not given a single reviewer with a sociology degree although this was the second largest field represented among its proposals.

### External Reviews

NIE staff dealt with the reviewers in various ways. T&L found that there were no acceptable proposals for six of the new reviewers and recommended that twelve others be transferred to EPO although EPO personnel never became aware of the transfer. Staff members of this section pursued a policy of "damage containment", assigning the weakest reviewers to proposals that were so poor that they would probably be eliminated by other readers.

Proposals were then sent out. As in previous review cycles, readers were instructed to use the selection criteria listed in the information statement, i.e., significance of the proposed research, quality of the project, qualifications of the research personnel, adequacy of facilities, and reasonableness of budget. Review schedules were also provided. The response among one set of new reviewers, those of EPO, was an unusually high attrition rate. When they received follow-up telephone calls, some of the readers expressed intent to complete the assignment at some future date (even though deadline dates had been given). Others stated that they could not apply the criteria specified and some made clear that they had not known what was involved in reviewing research. Even some of the "qualified" reviewers returned proposals on the grounds that inappropriate assignments had been made of proposals that did not fit their areas of expertise.

When the external reviews were complete, staff members retained for consideration all proposals receiving an average score of at least 80 and in EPO, a few additional ones for which special reasons seemed to warrant further consideration. Of this group, EPO staff selected one proposal for reconsideration while the Director's office requested that five be retained.

Each team or section then prepared its recommendations, including explanations for any deviations from the rank order indicated by the scores. These recommendations were then combined into two master slates, one each for T&L and EPO, which were forwarded to the Director's office the second week in August. (Dissemination in Practice had only one proposal to put forward.) The response, a memo of August 24, 1982, was a list of proposals approved for funding that departed sharply from the recommendations of both external reviewers and staff. The outcome made clear that the review process was largely irrelevant to the final outcome, a hypothesis that had been suggested earlier by frequent inquiries from the Director's office about the fate of certain proposals. The memo also made clear that

some research topics were acceptable while others were not.

### Acceptable Research Topics

Staff members had prepared slates for the Director's office on the assumption that selection would proceed from the higher to the lower-ranked proposals to the extent that available funds permitted. The T&L slate consisted of a rank-ordered list of 20 proposals recommended for funding. The eight proposals selected by the Director's office from this slate included five of the twenty and, in addition, three that had not been recommended. The EPO slate considered 31 proposals, placing eleven in the "strongly approve" category, eight in the "approve" group, five in "provisionally approve" (assuming that major problems could be resolved) and seven in "disapprove". The final selection of EPO proposals included three from the "strongly approve" group, two from "approve", three from "provisionally approve", and one from "disapprove". The DIP proposal was not selected.

The proposals removed from consideration had to do with certain topics. Of the six on mathematics and educational technology that were included in the T&L slate, none were funded. Four others eliminated from that list had to do with individual processes of social development or behavior, e.g., learning the student role. From the EPO list, four proposals on school desegregation in the "strongly approve" and "approve" categories were eliminated, along with several on educational finance.

Of the eight Teaching and Learning proposals finally chosen, five mentioned "reading", "writing", or both in their titles. The Director's nine selections from the Educational Policy and Organization list included two with titles that referred to private schools and one that concerned values education. Of these, the first two came out of the "provisionally approve" category and the last one, from "disapprove". The last one so poorly defined its topic and methods that it could not have been expected to produce credible results of any kind. It was described by one staff member as worse than anything ever funded in the Unsolicited Program.

See New Page 11

## NIE Announces Two New Programs

The National Institute of Education recently announced the resumption of grants awards with the inauguration of two new programs. The first will fund research on Law and Government in Education with support for studies on the effects of legislative, administrative, and judicial policies and governmental organizations on education. This program will award small grants, limited to a maximum of \$10,000 in direct costs and twelve months duration, and major grants. A small grant requires only one application, and the first closing date will be April 4, 1983 with decisions to be announced in August.

An applicant for a major grant must submit a pre-application for review by NIE before a full application can be presented. The first closing date for pre-applications for major grants is March 15, 1983. A second closing date of January 4, 1984 has been announced for both small and major grants but must be considered tentative. It is anticipated that approximately 6 to 10 major grants and 8 to 10 small grants will be awarded in FY 1983. For additional information or a copy of the grants announcement, contact Edwin R. Dean at (202) 254-5928 or Jo Ann McGeorge at (202) 254-8897.

The second program, a research grants competition on Teaching and Learning, is organized around two major areas. The first topic for which applications are invited, Literacy/Mathematics Learning, includes the sub-topics of mathematics learning; basic cognitive skills in mathematics, reading, writing, and other areas; language learning and the development of literacy in a second language; reading comprehension; and writing. For additional information on this program or a copy of the grants announcement, contact Warren Simmons at (202) 254-4600.

The second research area focuses on the influence of policy and practice on the quality of teaching and includes the sub-topics of rewards and incentives; local management of schools; and policy implementation and schooling practices. For additional information on this program, contact Gary Sykes at (202) 254-7930.

While the Teaching and Learning program makes no formal distinction between small and major grants, it encourages the submission of applications of varied scope. It is estimated that 30 to 45 grants will be awarded in FY 1983, ranging in size from \$25,000 or less to larger grants with budgets averaging \$50,000 per year. The application procedure is a single-stage process with a deadline of April 22, 1983.

For all contact persons listed above, the mailing address is: National Institute of Education, 1200 19th Street, N.W., Washington, DC 20208.

### ASA FOOTNOTES

Published monthly except June, July, and September. Distributed to all persons with membership in the ASA. Annual subscriptions to non-members: \$10. Single copy: \$1.50.

Contributions to "Open Forum" should be limited to 800 words; "Obituaries", 600 words; and "Letters to the Editor", 400 words. News items and announcements are due the first of the month preceding the month of publication (e.g., April 1 for May issue) and are printed once only on a space available basis. For purposes of economy, no confirmation of receipt of news items will be sent.

Editor: William V. D'Antonio  
Associate Editors: Carla Howery, Bettina Huber, Jo Ann Ruckel, Paul Williams  
Secretary: Herbert L. Costner

Send communications on material, subscriptions, and advertising to: American Sociological Association, 1722 N. Street, N.W., Washington, DC 20036; (202) 833-3410.

Copyright 1983, ASA. Third class postage paid at Washington, D.C., and additional mailing offices.

# New Priorities Given as Justification for Changes

(continued from page 10)

posals Program. In fact, as of this writing, well into the new fiscal year, the proposal still has not been funded. Staff members assigned to monitor the study prepared a list of questions to be answered before the award could be made, and they have not yet been answered in a satisfactory manner. Similar award negotiation requirements that were imposed on other proposals succeeded in bringing about substantial improvement before funding took place.

## Official Justifications

When the Director's decisions were first issued, staff members requested an explanation for the discrepancy between the final selections and both reviewers' scores and staff recommendations, but the requests were refused. An account of the "disapproved" proposal was leaked to *Education Week*, however, and when the paper interviewed the Director, he reported one basis for his decisions when he stated his "feeling that a great deal of work already has been done on desegregation" (September 15).

The outcry that followed the Director's memo and the newspaper article may have suggested a need for some justification of the decisions that had been made. In time, a memo signed by the Director and dated September 23 appeared in the files of the Unsolicited Proposals Program. It described the review process and reported that decisions were based on the recommendations of associate directors and special assistants. It also included explanations for both the decisions to fund certain proposals, some of which had not been recommended, and not to fund those that had been recommended. For one of the low-scoring proposals that had been selected, the explanation reads: "The relationship between reading and writing is not frequently enough considered. There might very well be a correlation between being a good reader and a good writer and vice versa, and a correlation between being a good writer and reading good books... This is a new area in educational research and might prove most fruitful." For another, one which had been recommended by both reviewers and staff, "This is a proposal which squares completely with the Secretary's priority on excellence in education..." (for a proposal that had nothing to do with excellence or quality).

Among the highly ranked proposals not funded, all the desegregation proposals received the same comment: "During this round of unsolicited proposals, the Institute is not funding any individual desegregation projects..." Another high-scoring proposal, dealing with responses to fiscal stress in post-secondary institutions, received the explanation that "The decision not to fund this proposal is based on the wide variety of sources for fiscal stress, along with the proven ability of school administrators to deal with the individualized sources of this

stress"

## New Priorities

If these comments bear no relation to the announced selection criteria or, in fact, to the proposals, other documents circulated within the Department of Education provide some perspective on the outcome of the competition. A statement on priorities for FY 1983, issued by the Secretary, includes programs that "strengthen higher level skills in...math, science, English language literacy in reading, writing and speaking, and foreign language literacy" in addition to computer use. It stresses, however, the "programs that improve cognitive skills should be supported rather than programs that address attitudes, behavior, social 'awareness' or advocacy". This statement, repeated by the Secretary on various occasions, reflects the current administration's condemnation of "social research" and explains the rejection of proposals dealing with social development.

Explanations for the rejection of other categories of proposals are indicated by a memo from the Acting Director listing possible research topics for NIE. Quality is included, and the discussion pinpoints the reasons for the declining quality of American education: emphases on social and psychological development and on equality in education leading to a focus on programs for the low achieving student. From this perspective, research on student development or on desegregation is suspect. Another priority topic is educational finance but it is analyzed solely in terms of tuition tax credits and educational vouchers—hence the exclusion of proposals on other aspects of educational finance. Technology is discussed but only to point out that "in the initial states of its application, the need for large capital investments has often led to a centralization of control and a reduction of meaningful options" (indicating the reason for the rejection of the technology proposals). The final priority values justifies the inclusion of the "disapproved" proposal discussed earlier: "Values education has become a specific educational discipline, a discipline based on moral relativism... The techniques being promoted today are based exclusively on materialistic concerns found in human nature, and ignore the moral order based on the existence and concern of a personal God".

The outcome of the 1982 competition, therefore, was the revelation of acceptable and unacceptable research topics. The priorities that determined the final funding recommendations, however, were not selected before the competition was initiated, they were not made public, and they were inconsistent with a program having the purpose of developing "unique ideas relevant to the Agency's mission". They were also unknown to the staff members responsible for administering the competition and dealing with

applicants.

## Staff Selection

In the past, the program staff of the agency, consisting of former researchers and practitioners, many with advanced degrees, has played a key role in the administration of grants programs. As individuals knowledgeable in the subject matter of the various programs, they have maintained contact with appropriate research constituencies; selected reviewers appropriate for specific kinds of proposals; evaluated reviewers' comments; made funding recommendations based on knowledge of the field as well as on reviewers' comments; and monitored the grants that were awarded.

In 1982, staff members were largely unable to secure support for the best research. They were, however, able to impede funding to some of the worst. The continuation of present policies is likely to eliminate even these limited roles.

Most of the professional staff members of NIE lack permanent civil service status. They hold "excepted" three-year appointments for which vacancies have been advertised and competed but which do not become permanent. In the past, with some renewals of these appointments and the inclusion of some staff members with one-year fellowships, there was a rough balance of change and

stability. It was adequate to ensure the continuity of research programs, as opposed to single projects, and still provide for the short-term inclusion of specialists from the research world or academia.

Under the current administration, the picture has been altered. Beginning with the first Reagan-appointed Director and continuing with the Acting Director who succeeded him, there has been a policy of non-renewal of excepted appointees. The Director obtained authorization to fill the positions vacated by excepted staff members as their terms expired. Lip service was paid to the norms of research as the two agency heads stated the need for constant turnover of personnel "to keep research vigorous", an interesting perspective from individuals with no knowledge of research. In any event, "excepted" has been defined as political, and none of the vacant positions has been either advertised or competed. Some of the eleven new appointees who have been selected as associates or senior associates have advanced degrees while others do not. Only two appear to have had any research experience at all, and this is mar-

ginal, but all have clear Republican political antecedents, whether in Presidential campaign activity, work for pro-life candidates, or the production of anti-busing literature. Their employment references feature ultra-conservative politicians.

These are the "special assistants" cited in the Director's memo as the individuals upon whom he relied for advice in making his funding decisions for the unsolicited proposals. Not only are their qualifications as research managers open to question, but their substitution for earlier staff means a reduction in the range of academic disciplines, including sociology, represented at NIE. As sociologists and others become fewer in number, proposals submitted from these fields will have fewer knowledgeable staff members to deal with them.

Thus, the form of NIE has been preserved. The same information statement on Unsolicited Proposals that was circulated last year is still in use. Whether competent researchers will continue to submit their work to the same kinds of reviewers for comparison with lists of "acceptable" research topics remains to be seen.

\*\*\*\*\*

## Teaching Resources Center Catalogue

A complete listing of all materials currently offered by the ASA Teaching Resources Center is available upon request from the ASA Executive Office, 1722 N Street, NW, Washington, D.C. 20036; (202) 833-3410.

## American Sociological Association Teaching Services Program

presents two series of workshops to  
 improve the teaching of the discipline

### I. NATIONAL SERIES OF WORKSHOPS ON TEACHING

For the fourth year, the ASA Teaching Services Program will sponsor a series of workshops on teaching during April and May.

April 21-23, 1983  
 Atlanta, GA

PREPARING TEACHING UNITS FOR LOWER DIVISION COURSES

April 21-23, 1983  
 St. Louis, MO

FUNCTIONING AS A DEPARTMENT CHAIR AND FOSTERING TEACHING

May 6-7, 1983  
 Denver, CO

A WORKING LABORATORY ON TEACHING STYLES AND TECHNIQUES

Fees: \$165.00 for ASA members or \$195.00 for nonmembers for each workshop. Applications and more information are available from: Hans O. Mauksch, TD3-W Medical Center, University of Missouri, Columbia, MO 65212; (314) 882-6183.

### II. WORKSHOPS ON COMPUTER ASSISTED INSTRUCTION

Four workshops on the use of computer technology in the classroom are scheduled for the summer of 1983. Each workshop will orient the participants to microcomputers, basic SPSS procedures, available software and data sets, and will result in the development of a teaching unit using computer assisted instruction. Technical assistance will be provided by the Roper Center or ICPSR.

June 23-26, 1983

Northern Kentucky University  
 Highland Heights, KY  
 (use the Cincinnati, OH airport)

July 14-17, 1983

State University College at Brockport  
 Brockport, NY  
 (use the Rochester, NY airport)

July 28-31, 1983

Hood College  
 Frederick, MD  
 (use the Baltimore-Washington airport)

August 10-13, 1983

Brigham Young University  
 Provo, UT  
 (use the Salt Lake City, UT airport)

Fees: \$325 for ASA members and \$425 for nonmembers. Fee includes registration, room and board on campus, computer time, and individual consultation. Applications and more information are available from: Carla B. Howery, ASA Teaching Services Program, 1722 N Street, N.W., Washington, D.C. 20036; (202) 833-3410.

## Official Reports and Proceedings

Additional reports will appear in later issues.

### Section Reports

#### ENVIRONMENTAL SOCIOLOGY

The Section sponsored two thematic sessions and a roundtable session in San Francisco. The thematic sessions were particularly well-attended, as was the Section Business Meeting. Attendance at the latter may have been stimulated by the fact that it immediately preceded a social hour (with cash bar). The social hour provided an excellent opportunity for Section members to make and renew acquaintances.

Two important decisions were made at the Section Council Meeting in San Francisco. First, Council accepted (with minor modifications) the recommendation of the Ad Hoc Awards Committee, chaired by Pamela Savatys, to establish a Section Award for Distinguished Contributions to Environmental Sociology. Developed in accordance with ASA guidelines, and designed to be applicable to a wide range of contributions (and not just publications), the award will "recognize individuals for outstanding service, innovation or publication in environmental sociology." Second, following discussion of the results of a survey of Section members about the desirability of publishing a Section-sponsored "handbook of environmental sociology", Council endorsed the project. Riley Dunlap was asked to take the lead in editing the proposed volume, since he received the largest number of nominations for the editorial position in the Section survey.

At the Section Business Meeting a good deal of discussion concerned the need to foster more interaction between academic and non-academic environmental sociologists, in part to assist the former to do a better job of preparing students for non-academic careers. Christopher Cluett and Barbara Payne agreed to take responsibility for developing a "directory" of the substantial number of Section members employed in non-academic positions, as a first step in promoting the desired interaction.

The Section newsletter continues to be published on a quarterly basis, and the issues typically exceed 20 pages each. Judging from members' comments, the newsletter serves a valuable function in disseminating information, and its length justifies the extra two dollars in Section dues.

Finally, Section elections were held to replace outgoing Secretary Elizabeth Peelle and Council Members Thomas Dietz and Craig Humphrey. Cynthia Flynn was elected Secretary, and Donald DeLuca and David Sills were elected to the Council, all for three-year terms.

Riley E. Dunlap  
Chair

#### MEDICAL SOCIOLOGY

Election of Officers: The Nominations Committee, chaired by Richard Hessler, supervised the Section election with the following results: Linda Aiken (Chair-Elect), Andrew Twaddle (Chair), Health Policy Committee, 83-85; Marshall Becker (Chair), Professional Relations Committee, 83-85; John Colombatos and Peggy Leatt (Council Member-at-Large, 83-85); June Lowenberg (Student Council Member, 83-85); Jan Hanken, Anselm Strauss, James Sorenson and Sandra Lewis (Nominations Committee, 82-83). Hanken will chair the 1983 Nominations Committee.

Standing Committee Activities: At the request of the ASA Executive Office, the Health Policy Committee prepared an extensive file of research and related materials pertaining to national health policy issues for possible use by congressional offices and the media. This major undertaking, for which the Section received special acknowledgment from Russell Dynes, ASA Executive Officer, was executed under the direction of Linda Aiken who assumed the office of Acting Chair on relatively short notice.

The Professional Relations Committee (Mark Field, Chair) continued the work of expanding the Section's contacts and exchanges with other social science-oriented academic and professional bodies in the health care field.

The Publications Committee (Jennie Kronenfeld, Chair) addressed a variety of issues touching on the place of medical sociological writings within the discipline of sociology and on problems of access to and influence of medical sociologists on the publications policies and procedures of ASA. A resolution urging that the Section be more fully consulted in the selection of future editors of the *Journal of Health and Social Behavior* was unanimously endorsed by the Section Council and forwarded to the ASA Publications Committee.

Building on a national survey which the Teaching Committee (Catherine Riessman,

Chair) had earlier conducted of undergraduate teaching of medical sociology, a number of plans are being explored for developing model syllabi and formats for college level teaching of medical sociology courses in conjunction with ASA's Teaching Resources Center.

The Career and Employment Committee (Clyde Pope) continues to follow-up on the implementation of the Graduate Student Internship Program in Applied Medical Sociology.

Other Activities: Two resolutions will be voted upon in the forthcoming Spring 1983 section election. The first proposes a section dues increase from \$7.00 to \$10.00 per annum mainly to facilitate the scheduling of Section workshops at the annual meetings and, secondarily, to partially underwrite the annual mid-winter meeting of Section Council. The second resolution proposes a change in the Section's by-laws, designed to better expedite the annual nominations procedures.

A resolution introduced by incoming chair Irving K. Zola seeking from ASA explicit provision for better access by the physically, visually and hearing impaired to the ASA annual meetings was endorsed unanimously and forwarded to the ASA Council.

A scheme whereby Section members would donate one day's consultation fees to the Section treasury received further developmental planning by Past Chair Ronald Anderson and associated Section member colleagues in the Chicago area.

Five Section sessions were again included in the ASA annual program. Topics with their respective organizers were: Women and Minorities in the Health Fields (Judith Lorber), Challenging Taken-for-Granted Assumptions in Medical Sociology (Julius Roth), Social Support Systems in Health Care (Peggy Tholis), Sociology of Disability and Rehabilitation (Irving Zola) and Roundtable Sessions (Lois Pratt).

Jeffrey Salloway succeeded Patricia Collette as Editor of the *Medical Sociology Newsletter*.

Eliot Freidson received the 1982 Leo G. Reeder Distinguished Medical Sociologist Award. The 1982 Best Dissertation Award went to Daniel F. Chambliss, Hamilton College, for his Yale University thesis *The Bounds of Responsibility: A Study in the Social Psychology of Nursing Ethics*.

Fred Davis  
Chair

#### ORGANIZATIONS AND OCCUPATIONS

The main activity of the Section, besides the annual meetings, was the preparation of a Section directory. Unfortunately, Ginger Burch died suddenly just as the directory was to be inputted on tape for easy updating. It has taken a large number of months to determine the extent of progress and to obtain the original data. Hopefully in the upcoming year, the directory will be finished.

Under the editorship of Joe Lengermann, the newsletter of the Section was quite well done. Three large issues were published with information obtained from the regional editors. The Section finds that the system works quite well and intends to keep it. The new editor that will replace Joe Lengermann is Richard Hollinger of Purdue University.

At the business meeting, the Section decided to award a prize for the best journal article and book. This idea was first mentioned at last year's meeting. The prize for this competition will be for support up to \$500 for a Section member, having completed his/her doctorate degree no more than 7 years before, to attend the EGOS meeting. This award carries with it responsibility for writing a report on the meeting and thus in payment for work. Eligible scholars cannot be tenured at the time of the competition. The competition will be held during the winter and the winner will be announced at the following ASA meetings. Judging will be performed by the Section Council. The proposal was unanimously approved by the Council and by the members attending the session meeting. Robert Perrucci will organize the call for papers and the judging. The first award will be given for a trip in 1984.

Jerald Hage  
Chair

#### POLITICAL ECONOMY OF THE WORLD-SYSTEM

The Political Economy of the World-System Section has moved forward in the direction of its basic purpose, to pursue the study of world-systems over long periods of time, and to understand the differences such a point of departure makes for the integrated analysis of the political economy and its social bases.

The Sixth Annual Spring PEWS Conference was held in Tucson and focused on

"Crises in the World-System". The Seventh PEWS Conference will be held at Duke University, March 31-April 2, 1983. The focus of PEWS7 is "Labor and Labor Movements in the World Capitalist System". It is being organized by Professor Charles Bergquist, Department of History, Duke University, Durham, NC 27708.

Two excellent and well-attended regular sessions were presented at the ASA meeting in San Francisco. The topics were "Tensions Between Historical Studies and Formulating a Theory of the Capitalist World-Economy" and "Linkages in the World-Economy". A didactic seminar was held on "Methods for World-System Analysis". In addition, several section members participated in the teach-in on social justice held at Glide Memorial Church.

At the 1983 ASA meetings in Detroit, we will present sessions on "Detroit in the World-Economy" and "The Shape of the World-System in the Year 2000".

This year's officers are: Chair, Wally Goldfrank; Chair-Elect, Al Bergesen; Secretary and Newsletter Editor, Rick Tardancio; Council: Michael Hechter, Theda Skocpol, Fred Block, Peter Evans, Martin Murray and Peggy Sowers.

Our Section owes thanks to Susan Eckstein for her work on the Nominations Committee and to Wally Goldfrank for his production of the Newsletter. Newsletter items should now be sent to: Rick Tardancio, Sociology, Tulane University, New Orleans, LA 70118.

Christopher Chase-Dunn  
Chair

#### SOCIAL PSYCHOLOGY

During 1981-82 the Social Psychology Section undertook three tasks. One was to improve the quality of the Newsletter. Acting on the suggestion of the previous Chair, Mel Kohn, we separated the editorial function from that of the Chair. Gary Fine became Editor and produced a Newsletter that is attractive in format and contained a good amount of useful content. Since the Newsletter is one of the few concrete ways in which the Section benefits its members, we hope it will flourish over the coming years.

A second task was planning the program for the 1982 meeting. Others will be more objective judges than I, but the outcome seemed to me successful. Of central importance was a session in which the 1981 Cooley-Mead Award was presented to Ted Newcomb, and the 1982 Award to Alex Inkeles. (Two awards in one year because of a change in timing of the presentation; in the future, there will be a single award given every year.) Alex and Ted each gave a very well-received talk, there were several statements about these two eminent social psychologists, and the session ended with an informal social gathering. The session was a fine mixture of serious professional discussion and warm feeling. We also had an excellent session on the teaching of social psychology (Kurt Back, Alex Inkeles, George McCall, and Lynne Zucker), a lively set of roundtables, and a stimulating collection of papers on new research in social psychology. My thanks to everyone who organized and participated in these sessions. As a pleasant postscript, I have just learned that the Inkeles and Newcomb speeches are to be published in *Social Psychology Quarterly*.

The third task this year was not nearly so successfully carried out as the two just mentioned. I had hoped to put together a set of teaching materials on social psychology and requested contributions through the Section Newsletter and in other ways. Exactly two persons sent in contributions. On the other hand, I received at least a half dozen requests for the final product from persons who saw the request for contributions/Demand is there, but not supply. At this point, the ASA Teaching Resource Center has taken over the task, I trust with more success than I had.

My thanks to Council Members for their help during the year; to the Awards Committee (Jim House, Chair) and also organizer of the (Awards Session) and to the Nominations Committee (Jim Moore, Chair). The last mentioned committee had an excellent slate of candidates, both those who won (Dick Hill, Chair-Elect, and Sandra Ball-Rokeach and Jim House, new Council Members) and those who did not.

The Social Psychology Section is not ever likely to be as tightly committed as, say, the Section on Marxist Sociology, nor as professionally focused as, say, the Section on Medical Sociology. But we serve a large number of sociologists (and some psychologists as well) who are interested in and wish an identification with what is often called "sociological social psychology". A good representative of this important grouping is my successor, Glen Elder. He has a number of excellent ideas for Section activities in the coming year. Other Section members will join me in wishing him much success.

Howard Schuman  
Chair

#### SOCIOLOGICAL PRACTICE

The past year marked a turning point in the organizational development of the Section, now in its fifth year of existence. Its by-laws were substantially revised, based on recommendations made by a committee headed by a former chairperson, Carolyn Dexter. The Section's Council was significantly enlarged; roles and tasks of its officers were formalized; and provisions were made for an annual award that would recognize a sociologist's significant career of professional achievements in sociological practice.

Heightened visibility for the Section's primary interests was achieved through an ASA-sponsored workshop on "Directions in Applied Sociology", held in December 1981 in Washington, D.C. Many officers, past and present, and members of the Section took an active part in the workshop; several delivered invited addresses. Some of these will appear in a book based on workshop papers, scheduled for publication by Jossey-Bass early in 1983. The national thrust of this workshop could be extended by convening others at the regional level, to advance the dialogue between academic and applied sides of the discipline in the general interest.

Other signs of the Section's increasingly active stance within ASA were the successful petitioning onto the ballot of candidates for Council, and the establishing of closer liaison with other committees and sections. Plans for a new, expanded directory of Section members and for the soliciting of new members at regional society meetings took a firmer shape during the year.

By any standard, the San Francisco Meeting was a success for the Section, which co-sponsored the Student Reception, well-attended by SP members, and hosted a Section cocktail party. The Section Council and Business Meetings were active, with broad-based participation, and the Roundtable and Panel Sessions drew large audiences, even though they were held on Friday. To judge from these and other indications, sociological practice is on the verge of becoming a thriving interest and concern of many ASA members.

The Section serves increasingly as a vehicle for the mobilization and representation of interests of sociologists working in a wide variety of applied settings as well as those engaged in training for non-academic jobs and careers. To the extent that it succeeds in these tasks, it widens the range of alternatives available to sociologists in the future, and helps secure the progress of the discipline.

Albert E. Gollin  
Chair, 1981-82

Ronald W. Manderscheid  
Chair, 1982-83

#### SOCIOLOGY OF EDUCATION

Many people have contributed to the activities of the Section this year. Rodney Riffle and Jeffrey Schneider, National Institute of Education, continued as editors of the Newsletter; they will carry on their work next year as well. The Newsletter appears regularly throughout the year and carries useful information about funding and data sources as well as topical articles and announcements.

Floyd Hammack, New York University, and Denise Kandell, Columbia University, selected the first-rate papers from among many submissions for the two program sessions at the Annual Meeting in San Francisco. Membership in the Section was short of the number required for three sessions at the Annual Meeting, and we urge those who have not renewed their membership as well as newly interested people to join the Sociology of Education Section.

The Section nominating committee was chaired by Kenneth Feldman, State University of New York-Stony Brook. Caroline Perrell, New York University, formerly Secretary-Treasurer, was elected Chair-Elect. She will succeed this year's Chair, Randall Collins, University of California-San Diego, who will work with Francisco Ramirez, San Francisco State University, as Secretary-Treasurer and the Council composed of Ronald Corwin, Ohio State University; Harriet Zuckerman and Denise Kandell, Columbia University; Dan Lortie; Jane Mercer, University of California-Riverside; and Ann Parellius, Rutgers University.

The Section continues to provide support to *Sociology of Education* after a year of intense questioning about specialized journals in the Association. It urges its members, in particular, but also others to subscribe to *SOE*. The Section has shown its material support by providing some of the funding for the publication of a very fine special issue on Coleman et al., *Public and Private Schools*, a publication of major significance in public policy circles in addition to its methodological and theoretical importance.

The Section meeting expressed its continuing support for the journal. It also considered ways of increasing membership and urged members to keep up their mem-

bership dues and to bring in new members. It expressed its thanks to all those mentioned above who contributed to the life of the Section. In addition, it thanked Edith King, University of Denver, for her work in organizing the Policy Implications of Research Committee (PIRC). Those interested in working with her should contact her directly. Finally, the Section meeting urged that the practice of a reception for Section members be continued and that innovative ways of using Section sessions be explored for the next Annual Meeting.

Zelda Ganson  
Chair

#### SOCIOLOGY OF POPULATION

Now in its sixth year, the Section includes just over 300 members. Approximately 40 members attended the business meeting at the Annual Meeting in San Francisco. As Chair of the ASA Committee on National Statistics, Harriet Presser reported on concerns with ASA's continued support of the Council of Professional Associations on Federal Statistics (COPAFS). The Section voted to encourage the continuation of ASA support for the important, and distinct, functions provided by this group. Reports were heard on the status of NICHID funding for population research and on the collation of syllabi for the ASA Teaching Resources Center. There was some discussion of the unique role to be played by the Section in strengthening and making more visible the deep sociological roots of population sociology.

The Newsletter, edited by Mary Kritz, continues to do an excellent job of keeping members informed of relevant announcements and happenings as well as providing an opportunity for some dialogue through the "Reader's Forum".

In addition to a considerable number of other sessions directly relevant to the research interests of members, two sessions were offered by the Population Section at the 1982 meetings in San Francisco. Topics covered included immigration policy, ethnic differences in socioeconomic gains, childlessness and delayed fertility, house and family structures and mortality.

The officers of the Section in 1983 will be Harriet Presser, Chair, and Dudley Poston, Chair-Elect. Mary Kritz continues as Secretary and the six Council members are Leo Estrada, Basil Zimmer, Earl Hyland, Marta Tienda, Linda Waite and Arlynd Thornton. The 1983 Nominations Committee will be Douglas Gurak (Chair), Paula Hollerback, Margaret Marini, Teresa Sullivan and Jim Zuchies. John Macisco, 1983 Program Committee Chair, has announced two sessions for the coming year. The first, entitled "Sociology of Population: Migration" will be organized by Macisco; the second, "Impact of New Demographic Data on Sociological Research" will be organized by Charles Hirschman.

Larry Bumpass  
Chair

#### SOCIOLOGY OF WORLD CONFLICTS

The past year has seen a striking rise in the salience of world order issues, especially the issue of preventing nuclear war. So far, this renewed public interest has not been reflected in any increase in membership in the Section. At last count, the membership was still barely over the 200 needed for survival. It would be a sad irony, indeed, if the World Conflicts Section were to fold at a moment when the non-sociologists among us have shown so much interest in the Section's *raison d'être*.

Among the 200, however, there has been an increase in activism. Many members appear to be searching for ways to make the Section an appropriate vehicle for bringing sociological knowledge to bear on preventing nuclear war, or on the peaceful resolution of specific world conflicts, particularly in the Middle East, Africa and Latin America. Perhaps increased Section activity will stimulate increased membership.

We discovered that there are expenses in carrying on even a very modest amount of activity. These expenses (for photocopying, renting films and projector, extra mailings, etc.) are met by dunning the officers on an ad hoc basis. There has been a reluctance to request an increase in dues from \$5 to \$7 for fear that even a marginal loss of members will drive the Section below 200. But this year the membership will be asked to add \$2 to the Section dues for such incidental expenses.

The main Section activity occurred, of course, at the Annual Meeting in San Francisco. Ross Klein organized sessions on national movements for peace and on the global context of inter-national conflict, particularly in the Third World. In addition, the Section sponsored a special session to show the film, *The Last Epidemic*, and to discuss with an invited guest, Daniel Ellsberg, what sociologists might do individually and collectively toward preventing nuclear war.

This special session was put together at the last minute and special thanks are due the ASA Executive Office for making 11th hour scheduling arrangements in a spirit of support and encouragement.

We also had, thanks to the efforts of Ruth Searles, a literature table operating for part of the meetings, attempting to capture some of the renewed interest in issues of world conflict. Having broken out of the standard set of section activities, members are actively exploring more creative uses of the time allocated to the Section at annual meetings. In particular, there is no automatic assumption that our future sessions will be devoted to the conventional format in which several papers are presented with brief discussion at the end.

Finally, the Section arranged to have the *Institute of World Order's Curriculum Guide* (with sample course syllabi) available through the Teaching Resources Program of the ASA. However, sociology is notably represented among the existing set of syllabi. There is still unfinished business here in the form of either increasing the sociological input in the next edition of the *Curriculum Guide*—or putting together our own curriculum guide.

William A. Gamson  
Chair

## THEORY

During the year 1980-81, the Theory Section found itself unable to award a Theory Prize, largely because of the dearth of articles submitted. At the 1981 meetings, a more elaborate mechanism was instituted with both a scanning and evaluation committee formed. This mechanism proved successful; twenty papers were read by the Prize Committee and the Committee reported that the quality of those submitted was high. The Theory Prize was awarded to Randall Collins for his article on "The Micro Foundation of Macrosociology", which appeared in *The American Journal of Sociology* in 1981. Alex Berg received an honorable mention for his article, "Critical Theory: Is There Still Hope?", published in *The American Journal of Sociology* in 1980.

The most significant developments in the Theory Section's activities are international in character. It was decided at the Business Meeting in San Francisco that two sessions of the Theory Section would be devoted to a single theme, and these sessions would run successively. The theme is "Current Cross-Fertilization of American and European Social Theory", and it is hoped that papers on diverse theoretical topics will be submitted and presented. One additional session will be in the form of an informal roundtable to accommodate other theoretical topics.

In addition, the Theory Section initiated plans for a joint conference with the German Theory Section for a joint session on European and American theory traditions. It was suggested that such a session might be held in Amsterdam in 1984. The committee, consisting of Jeffrey Alexander, Edith Kurzwil and Neil Smelser, was appointed to carry on negotiations with Richard Munch and Hermann Strasser to plan the conference.

Neil J. Smelser  
Chair

## Committee Reports

### APPLIED SOCIOLOGY

The Committee on Applied Sociology had an active year, stimulated by the interest in and positive outcome of the Washington, D.C. Workshop. Committee members were most helpful in manuscript preparation for the volume, based primarily on the Workshop, that will be published in Spring 1983 by Jossey-Bass.

At its formal meeting, during the San Francisco Annual Meeting, and in informal discussions, a number of persistent issues and concerns continue to preoccupy the Committee and to represent an agenda for future Committees on Applied Sociology.

There are four concerns that are most pervasive. First, Committee members generally continue to feel that the ASA remains insufficiently responsive to sociologists pursuing careers outside of academia. This lack of responsiveness is reflected in the small number of non-academic sociologists represented among committees and officers of the Association, the proportion of the *Annual Meeting Program* salient to sociologists on the applied side, the difficulty of publishing applied articles in ASA journals and the inadequate staff resources available in the Executive Office for serving the interests of applied sociologists. Committee feelings reflect, naturally, the self-interests of the Committee membership. At the same time, many Committee members feel that the Association needs to encourage the participation of applied sociologists in order to maintain its robustness and vitality, for a significant number of applied sociologists no longer continue their membership in the Association.

Second, Committee members are concerned with the limited extent to which employment opportunities outside of the academy are promoted by the ASA. A number of members observed that other scholarly and professional associations are much more active in educating governmental and private organizations on the qualifications of members of their associations, and are much more aggressive in "marketing" their members.

Third, while the discussions at the 1981 Workshop were useful in identifying educational experiences required for positions outside of academia, a large proportion of the Committee feels that further thought is required in order to specify the competencies necessary to compete in the non-academic marketplace. A related concern is the still limited recognition of applied sociologists within academic departments and the difficulties of persons on the applied side to achieve successful careers equal to those of their conventional academic peers.

Fourth, a number of Committee members advocate a stronger political orientation for the Association and its membership. They believe that the health of sociology as a discipline, as well as opportunities for us to undertake applied work, are intricately related to a political climate in which scholarship and sound social research are appreciated and utilized. While they recognize that there are limits to which an association such as the ASA can actively operate on the political scene, they believe that there has been an over-reliance on the part of the ASA to do so.

The Committee does appreciate the extensive efforts consistent with our interests that have been undertaken by Russell Dynes and Carla Howery, and by others in the ASA Executive Office. The observations noted above in no way are meant to reflect on the collaboration and cooperation which we have received from the staff of the ASA Executive Office. Likewise, officers, committee chairs, and many members of the Association have been most helpful and involved in the activities of the Committee. We greatly appreciate their collaboration.

Finally, I personally want to acknowledge the very spirited and generous work done by the members of the Committee. Over the three years I have served as Chair, I have found an unusual sense of mission and cooperation, despite the many other demands on Committee members' time. I am sure that my successor as Chair can look forward to the same support.

Howard E. Freeman  
Chair

### AWARDS POLICY

A major task of the Committee during the year was the revision of the draft of the proposed *ASA Manual of Policies and Procedures for Awards and Prizes*. This work was completed in November, 1982 and the proposal has been transmitted to the Executive Office for possible early action by Council. At its meeting of September 6 in San Francisco, the Committee voted unanimously to recommend adoption by Council of the *Manual* as a statement of the official policies of the Association.

At its 1982 meeting the Committee also voted to recommend to Council that a subcommittee be appointed to develop specific policies and procedures for accepting both categorical and unrestricted funds from donors. This committee would be asked to specify means for insuring adequate recognition of donors while maintaining essential economy and flexibility in administration of funds and of the associated awards, prizes and grants. The intent of this recommendation is to implement Council's 1979 policy statement concerning establishment of a fund for special awards and prizes, and to consider the addition of an ASA Memorial Award Fund. In both cases, the proposed funds could assemble various grants and bequests for purposes of maintaining efficient management and consistent policies, while carrying out the wishes of donors for appropriate recognition.

The Committee on Awards Policy has given serious consideration to the question of multiple recipients for a particular award. The Committee understands the dilemma of choosing among several candidates when all seem equally deserving. Nevertheless, it is our recommendation that multiple awards be discouraged. We believe that such awards tend to excessively diffuse the public recognition and honor intended. We propose that under no circumstances should more than two persons share an award, and that a shared award be made only in the rarest cases when a choice seems to the responsible committee to be altogether impossible.

The Committee has discussed the possible desirability of establishing a new award program for younger scholars. It was noted that although some younger sociologists receive very important professional rewards, many may not be fully recognized because their contribution consists of a corpus of work that does not have the visibility of a single major contribution. We have no specific recommendation at this time but will continue

to encourage discussion of this matter.

We repeat our most earnest plea to chairpersons of award committees to inform us of the procedures they are using. From the fragmentary information available, we note several variations in current policies that may be desirable objects of further attention by particular award committees, e.g., eligibility of non-sociologists, whether unpublished works may be considered.

And we are grateful to the several chairpersons who have provided us with detailed and thoughtful accounts of the work of their respective committees.

Robin M. Williams, Jr.  
Chair

### CAREER OF DISTINGUISHED SCHOLARSHIP AWARD SELECTION COMMITTEE

The Career of Distinguished Scholarship Award is the highest award of the Association. This fact the members of the Selection Committee were keenly aware of as they deliberated on the eighteen nominees (three were women) and chose Kingsley Davis to be the 1982 recipient.

The Committee readily reached consensus on the general criteria for selection: the breadth, quality, and extensiveness of intellectual contributions to the field of sociology, as scholar, researcher and teacher, and also the nature of other valuable activities and contributions to the profession.

Since this was the third year of the existence of the Award, the Committee undertook a review of its policies and procedures, as mandated by the Committee on Awards Policy. There was full agreement about the effectiveness of the procedures that have evolved over the three-year period, by which the chairperson of the committee coordinates the many necessary activities during the year preparatory to the committee meeting at the annual ASA conference. Two matters were discussed at length: the number of awards and the nominations procedures.

During each of its yearly meetings, the very Committee has discussed the limitations created by making only one award each year. The focus on "career" interests with the facts of longevity to create a situation in which many scholars of extraordinary merit may go unrecognized. Also, less senior scholars are not likely to achieve the award, at least, not for some years to come. The possibility of making more than one award each year was taken up with the Awards Policy Committee, as well as selected other individuals. The general opinion that making more than one award would tend to devalue the award was shared by most members of the Selection Committee. Thus, no recommendation for change was made. We do draw attention to the likelihood that only the more senior members of the profession will be recognized during the coming years. The age distribution of this year's nominees was decidedly in that direction: ten were seventy years of age or over, five in their sixties, and three in their fifties.

The announcement of the award is made in three issues of *FOOTNOTES* before the June 1 deadline for nominations. It has become apparent that this way of soliciting nominations, while indispensable, contains a chance element, such that, for whatever reason, some highly meritorious scholars may not be nominated. It was decided that in addition to the *FOOTNOTES* announcements, the Committee itself should take a stronger role in the nominations process to insure that such persons are candidates.

The members of the 1982 Selection Committee were: Ivar Berg, Charles M. Bonjean, Jan Dizard, William H. Form, William J. Goode, Dean Knudsen, Hyman Lewis, Albert J. McQueen and Morris Zelditch.

Albert J. McQueen  
Chair

### DISTINGUISHED CONTRIBUTION TO SCHOLARSHIP AWARD SELECTION COMMITTEE

This Committee is charged by Council to examine each year the sociological literature published in the previous three years and to identify distinguished contributions to scholarship among these publications. On behalf of the Association, the Committee is directed to present a citation of merit to the author(s) of these distinguished publications. This is the report of that Committee's activities during the 1981-82 Association year. This Committee consisted of nine members whose names and affiliations are listed in the 1982 *Annual Meeting Program*.

The task of the Committee is composed of the following specific actions: (A) To announce the competition for the current year. Members of the Association and publishers are asked to nominate publications which they believe may qualify for the award. (B) To receive copies of publications nominated and examine them critically. (C) To decide the one(s) that represent the most distinguished contribution to scholarship. (D) To prepare and present the citation of merit

to the Association Annual Meeting that concludes the competition year.

In the 1982 competition, a total of 95 publications were officially nominated, 93 books and two journal articles. Twenty-five different members of the Association nominated one or more titles for consideration. Additional nominations were made by publishers. Books were entered in the competition from 38 different publishers, of which 13 were university presses.

The winner was selected through a three-step process of screening and evaluation. The first two steps were conducted by mail. The third step was the Committee meeting in San Francisco on September 6. In this meeting, the viable candidates were discussed thoroughly and a consensus was produced in "the sense of the meeting". The winner in the 1982 competition, as announced in the Presidential Plenary Session, September 9, was Stanley Lieberman for his *A Piece of the Pie*. As its last official act, the Committee wrote the citation for the winner.

The work of the Committee went well and satisfactorily. This resulted from two main factors: support of the ASA staff, especially Janet Astner, and full cooperation of all members of the Committee. The Committee wished that members of ASA had participated more extensively in nominating books for the competition. We believe that professional sociologists are the best judges of distinguished contributions to scholarship. We hope increased effort will be made next year to involve more members of the Association in the nomination-selection process.

Joseph S. Himes  
Chair

### DUBOIS-JOHNSON-FRAZIER AWARD SELECTION

The DuBois-Johnson-Frazier Award Selection Committee met on September 8, 1982, in the San Francisco Hilton and Tower Hotel during the ASA Annual Meeting. Committee members in attendance were: W. H. Estem, E. N. Glenn, G. Thomas, W. J. Wilson, and T. C. Cothran. Killian and Hope participated in the Award selection process by sending their individual rank order of the candidates. Borinski notified the National Office of ASA and the Chairperson that summer commitments precluded the possibility of his participating in the deliberations. Thus, five committee members were in attendance. However, seven members of the Committee provided written ballots.

The Committee was not able to secure minutes of previous meetings. Accordingly, the first order of business was to develop consensus on operating procedures.

## Competitions

### Alpha Kappa Delta

Rho Chapter of Alpha Kappa Delta is organizing the 9th Annual AKD Undergraduate Student Research Paper Conference. The conference will be held at the University of California, Los Angeles, on May 7 from 9 a.m. to 5 p.m. Faculty in the area should encourage their students to submit papers. Cash prizes will be awarded. For more information, contact: Rodolfo Alvarez, Department of Sociology, University of California-Los Angeles, Los Angeles, CA 90024.

### American Jewish History Prizes

The American Jewish Historical Society has announced that three prizes will be awarded during each academic year to recognize and reward meritorious work in the field of American Jewish history. The Leo Wasserman Prize will be awarded for the best article published in the Society's quarterly *American Jewish History* (*AJH*). The Leo Wasserman Student Essay Prize will be given for the best essay submitted on American Jewish history by a college or university student; the Administrative Committee Prize will be awarded for the best essay submitted on a topic dealing with local American Jewish history. The winning essays will be considered for publication in *AJH*. Each prize has a cash award of \$100; deadline for submission of essays is June 30 each year. Contact: American Jewish Historical Society, 2 Thornton Road, Waltham, MA 02154; (617) 891-8110.

### Ferber Award

The *Journal of Consumer Research* (JCR) and the Association for Consumer Research are proud to announce the Sixth Annual Consumer Research Award competition for the best article-length manuscript on consumer behavior based on a doctoral dissertation for which a degree was awarded after July 31, 1980. Winners of this award, named after the late Professor Robert Ferber, will receive an engraved plaque and the article will be featured in *JCR*. Also, the author will receive \$750 and an invitation to present the paper at the ACR annual conference. Manuscripts must be submitted before May 1, 1983. For information on eligibility, judging criteria, and submission format, contact: *Journal of Consumer Research*, Graduate School of Management, University of California, Los Angeles, CA 90024.

### Bertrand Russell Grant

The Bertrand Russell Society will award a doctoral grant of \$500 to help defray expenses of a currently enrolled doctoral candidate in any field whose proposed dissertation best gives promise of dealing in a significant way with the thought, life, or times of Bertrand Russell. Applications and supporting documents must be submitted by May 1, 1983. Contact: Prof. Hugh S. Moorhead, Chair, Philosophy Dept., Northeastern Illinois University, 5500 N. St. Louis Avenue, Chicago, IL 60625.

## Call for Papers

### CONFERENCES

**African Studies Association 26th Annual Meeting**, December 7-10, 1983, Park Plaza Hotel, Boston, MA. Papers and panels on all aspects of African Studies and from every discipline in the Arts, Humanities, and Sciences are encouraged. The deadline for submission of proposals, papers and abstracts is April 15, 1983. Contact: Professor Edouard Bustin, African Studies Center, Boston University, 125 Bay State Road, Boston, MA 02215; (617) 734-4920.

**American Society of Criminology 35th Annual Meeting**, November 9-13, 1983, Marriott Hotel-City Center, Denver, CO. Theme: "The Causes and Consequences of Crime: Multidisciplinary Contributions". Papers are solicited in the following topical areas: The Criminal Justice System; Criminal Policy: Formulation, Implementation & Evaluation; Criminological Research Issues and Specialized Topics; Criminological Theory; Multidisciplinary & Interdisciplinary Approaches to Criminology; International Criminology: Issues on Women and Crime. Submission deadline is April 1, 1983. Contact: Dr. Joseph E. Scott, Program Chair, Department of Sociology, Ohio State University, Columbus, OH 43210.

**Gerontological Society of America 36th Annual Scientific Meeting**, November 18-22, 1983, San Francisco, CA. Theme: "Human Values and the Life Cycle". Scientists, educators, professionals, and practitioners in the aging field are invited to submit an application to be on the meeting program. The Call for Papers provides information on the meeting program, sample abstract formats, and an application form. Deadline for applications is April 15, 1983. Contact: Gerontological Society of America, 1835 K Street, N.W., Suite 305, Washington, DC 20006; (202) 466-6750.

**Illinois Sociological Association Annual Meeting**, October 28-29, 1983, DePaul University, Chicago, IL. The Association invites papers and suggestions for panel discussions or thematic sessions. Papers should include a 300-word abstract and must be submitted by May 15, 1983. Contact: Richard T. Schaefer, Department of Sociology & Anthropology, Western Illinois University, Macomb, IL 61455.

**Science Fiction Research Association Thirteenth Annual Conference**, June 9-12, 1983, Midland, MI. Theme: "Science Fiction: Arts and Sciences". Proposals and papers on science fiction and fantasy are invited. Submission deadline is May 1, 1983. To submit proposals or papers, contact: Dr. Joseph W. DeBolt, Department of Sociology, Central Michigan University, Mt. Pleasant, MI 48859; (517) 774-3422 or 773-9764.

**Second Conference on the Social Impact of Technology in China and the West**, August 2-16, 1983, Beijing, Harbin, Dalian, and Shanghai, China. The purpose of this conference is to study the social impact of technology and to exchange papers and hold discussions between Chinese and U.S. specialists in technology and the humanities. Papers should emphasize information and perspectives in technological development. State-of-the-art papers on the positive and negative consequences of technology and technological modernization are encouraged. For information on the conference and a group tour package, contact: Shirley Kolack, Sociology Department, University of Lowell, Lowell, MA 01854; (617) 452-5000, ext. 2475.

**Society for the Scientific Study of Religion Annual Meeting**, November

4-6, 1983, Knoxville, TN. Theme: "Religion and Justice". Papers are invited on all aspects of the scientific study of religion, and especially pertaining to issues of justice in contemporary sociology. Proposals for workshops are also invited. Contact: Cheryl T. Gilkes, Department of Sociology, Boston University, 96-100 Cummington Street, Boston, MA 02215.

**Southern Regional Demographic Group 14th Annual Meeting**, October 19-21, 1983, Chattanooga, TN. Papers on any topic of demographic interest will be considered. Persons interested in serving as a discussant or session chair or in presenting a paper should contact the 1983 program chair. Submit 2 copies of a single page abstract by May 31, 1983 to: Dr. Daniel O. Price, SRDG Program Chair, Department of Sociology, University of North Carolina, Greensboro, NC 27412.

### PUBLICATIONS

*The Journal of Organizational Behavior Management* is planning a special issue on "Computers, People and Productivity" which will contain reviews and discussion articles, reports of original experimental studies, and case studies. The purpose of the issue is to explore the opportunities and pitfalls of computerization with special emphasis on the role of OBM in the "people side" of the equation. Submission of original works in any areas relevant to the theme are invited. Deadline is August 1, 1983. Contact: Lee W. Frederiksen, *JOBM* Editor, Department of Psychology, Virginia Polytechnic Institute and State University, Blacksburg, VA 24061.

*The Journal of Primary Prevention* announces a special issue on "Primary Prevention and the Family". The issue will focus on illustrative research articles, conceptual theoretical treatises, program formulation and evaluation, or analytic review papers which address each of the four primary prevention tools (competency promotion, community/group organization, education, natural caregiving) within a family setting or context. Manuscripts are solicited for this issue and should be submitted in triplicate using APA style by September 15, 1983. Contact: Gerald R. Adams and Jay D. Schvaneveldt, Department of Family and Human Development, UMC 29, Utah State University, Logan UT 84322.

*Journal of Psychosocial Oncology* has been established to meet the identified need by all disciplines for greater accessibility of up-to-date information on psychosocial oncology. The journal will provide a multidisciplinary perspective and now invites the submission of clinical and research articles from the broad range of health professionals concerned with the psychosocial needs of cancer patients and their relatives. Prospective authors are invited to request the "Instructions for Authors" brochure from the editor: Grace H. Christ, Director, Department of Social Work, Memorial Sloan-Kettering Cancer Center, 1275 York Avenue, New York, NY 10021; (212) 794-7017.

*The Cornell Journal of Social Relations*, an interdisciplinary publication, invites submission of articles on topics related to general social science interest, as well as topics related to the New Technologies, e.g., Biotechnology, Computer Assisted Design and Machining, Automation-Robotics, Reindustrialization Policy, Communications, etc. The editors welcome empirical, methodological, and theoretical papers, as well as literature

reviews. Request style sheets from and submit manuscripts to: Manuscript Editor, *Cornell Journal of Social Relations*, Department of Sociology, Uris Hall, Cornell University, Ithaca, NY 14853.

*Health Care in Developing Societies: A Reader in Social Science and Medicine* is presently in preparation. Anyone interested in contributing an essay to this projected text should request guidelines no later than March 1, 1983, from: Dr. John H. Morgan, Library Research Council in the Social Sciences, P.O. Box 661, Notre Dame, IN 46556.

*The International Journal of Mass Emergencies and Disasters* seeks manuscripts on social and behavioral aspects of individual, group, community, organizational, societal and international activities in preparations for, responses to, and recoveries from collective stress situations generated by natural disaster agents, technological accidents, violent intergroup conflicts, shortages of vital resources, and acute and chronic environmental threats. Send four copies of papers in ASR format to: E.L. Quarantelli, Disaster Research Center, Ohio State University, Columbus, OH 43210; or Orjan Hultaker, Uppsala University, P.O. Box 513, S-752 20 Uppsala, Sweden.

*The International Journal of Sociology of the Family* has planned a special issue on Intermarriage. Theoretical and empirical articles, focusing on ethnic intermarriage within a country (other than the U.S.) or ethnic intermarriage across national boundaries, are invited. Send 2 copies of manuscripts by July 1, 1983 to: Gary A. Creter and Joseph J. Leon, Guest, Co-editors, Behavioral Sciences Department 5-111, California State Polytechnic University, Pomona, CA 91768.

*The Journal of Criminal Law and Criminology* announces a Symposium on Current Death Penalty Issues to be published in the Fall of 1983. Contributions are welcome. Potential topics include: the impact of determinations of guilt and sentences of "death-qualified" juries, the latest empirical research on the deterrent punishment of juveniles, ethical issues of various forms of executions, and other classic themes. Contact: Katherine K. Watkins, Special Projects Editor, *Journal of Criminal Law and Criminology*, 357 E. Chicago Avenue, Chicago, IL 60611; (312) 649-8547.

*The Journal of Sport and Social Issues* announces Leon Chorbajian and Jordan Gebre-Medhin as Co-editors. The Journal publishes historical and contemporary analyses on racial, sexual, ethnic, class, political, economic and related themes in domestic and international sport. For information on book reviews, subscriptions, and manuscript submission, contact: Jordan Gebre-Medhin, Department of African American Studies, Northeastern University, 11 Leon Street, Boston, MA 02215.

*Sociological Focus* invites submission of papers for a special issue on "Stratification and Health". Manuscripts which examine aspects of structured inequality (e.g., age, class, gender, status groups, ideology) as they relate to health phenomena will be considered. Submissions that are interdisciplinary or cross-cultural as well as those based on conventional sociological research strategies are welcomed. Contact: Bebe Lavin and Elizabeth I. Mullins, Editors, *Sociological Focus*, Department of Sociology/Anthropology, Kent State University, Kent, OH 44242; (216) 672-2749.

## Meeting Calendar

**March 23-25. Calgary Sociology Colloquium.** University of Calgary, Calgary, Alberta, Canada. Theme: "The Challenge of Leisure and Its Diversity in a Pluralistic Society". Registration fees: \$20-\$65.

**March 25-26. Virginia Sociological Association Meeting.** Bruton Parish House, Williamsburg, VA. Contact: Gregory L. Weiss, Department of Sociology, Roanoke College, Salem, VA 24153; (703) 389-2351, x416.

**April 8-9. Undergraduate Sociology Symposium.** Mills Center, Hendrix College, Conway, AR. Contact: James R. Bruce, Department of Sociology, Hendrix College, Conway, AR 72032; (501) 329-6811, ext. 307.

**April 8-10. American Studies Association Great Lakes Chapter Spring Meeting.** Miami University, Oxford, OH. Theme: "Material Culture and Folk Life of the Ohio River Valley". Contact: Dennis P. Walsh, Department of English, Miami University, Oxford, OH 45056; (513) 529-5221.

**April 12-14. Association for Population/Family Planning Libraries and Information Centers 16th Annual Conference.** Pittsburgh Hilton, Pittsburgh, PA. Theme: "APLIC is Alive and Well and Visiting Pittsburgh". Contact: Dr. Susan Pasquariella, Head Librarian, Center for Population and Family Health, Columbia University, 60 Haven Avenue, New York, NY 10032; (212) 694-6985.

**April 13-15. Midwest Sociological Society Annual Meeting.** Radisson-Muehlebach Hotel, Kansas City, MO. Theme: "Rebuilding Sociology". Contact: Barbara Sherman Heyl, MSS Secretary, Department of Sociology, Illinois State University, Normal, IL 61761; (309) 438-2820.

**April 14-17. American Society of Group Psychotherapy and Psychodrama.** Roosevelt Hotel, New York City. Theme: "Current Applications of Psychodrama and Action Methods". Contact: Mary Watson, ACSW, ASGPP, Room D-116, East 27th Street, New York, NY 10016; (212) 725-0046.

**April 14-17. National Alcoholism Forum.** Hyatt Regency Hotel, Houston, TX. Theme: "Marketing the Message". Contact: Louisa Macpherson, National Council on Alcoholism, 733 Third Avenue, New York, NY 10017; (212) 986-4433.

**April 15. Symposium on Applied Sociology.** Indiana University-Purdue University at Indianapolis. Featured speakers: William Foote Whyte, Irwin Deutscher. Contact: Sue Hammersmith, 425 Agnes Street, IUPUI, Indianapolis, IN 46202; (317) 264-4881.

**April 15-17. Midcontinent American Studies Association and North Central American Studies Association Joint Convention.** University of Iowa and Amana Colonies. Theme: "Community and Communities in American Culture". Contact: Albert E. Stone, American Studies Program, University of Iowa, Iowa City, IA 52242.

**April 16. Annual Michigan Studies Association Conference.** Western Michigan University, Kalamazoo, MI. Theme: "Women in Education: Knowledge and Power". Contact: Margaret M. Bernhard, Office of Conferences and Institutes, Division of Continuing Education, Western Michigan University, Kalamazoo, MI 49008; (616) 383-0795.

**April 18-20. National Conference on Unemployment and Mental Health.** Dayton Convention Center, Dayton, OH. Contact: Rick Jones, Human Resource Initiatives, 1040 S. Smithville Road, Dayton, OH 45403; 1-800-654-2400.

**April 21-22. Conference on the Cultural Systems of Ethnic Groups.** Balch In-

stitute, Philadelphia, PA. Contact: M. Mark Stolarik, Executive Director, The Balch Institute, 18 S. 7th Street, Philadelphia, PA 19106, (215) 925-8090; or Murray Friedman, Regional Director, American Jewish Committee, 1411 Walnut Street, #1004, Philadelphia, PA 19102, (215) 564-2460.

**April 21-23. CMS Sixth Annual National Legal Conference on Immigration and Refugee Policy.** Shoreham Hotel, Washington, DC. Contact: Center for Migration Studies, 209 Flagg Place, Staten Island, NY 10304; (212) 351-8800.

**April 21-23. 80th Conference of the Middle States Council for the Social Studies.** Baltimore Hilton, Baltimore, MD. Contact: Mr. Robert Smith, Conference Chair, 103 Kentucky Avenue, S.E., #2, Washington, DC 20003.

**April 21-24. American Association of Suicidology 16th Annual Meeting.** Lincoln Hotel, Dallas, TX. Theme: "People at Risk: The Task of Suicidology". Contact: AAS Central Office, 2459 S. Ash, Denver, CO 80222; (303) 692-0985.

**April 22-23. Arkansas Undergraduate Sociology Symposium.** Mills Center, Hendrix College, Conway, AR. Contact: Dr. James R. Bruce, Department of Sociology, Hendrix College, Conway, AR 72032; (501) 329-6811 x307.

**April 23-27. Environmental Design Research Association 14th Annual Conference.** University of Nebraska, Lincoln, NE. Contact: Ruth York, (402) 472-6655; Jim Griffin, (402) 472-3592; or Doug Amedeo, (402) 472-1943.

**April 24-27. Popular Culture Association 13th Annual Convention.** Wichita, KS. Contact: J. Fred MacDonald, Department of History, Northeastern Illinois University, Chicago, IL 60625.

**April 26-29. Southern Gerontological Society Annual Meeting.** Sheraton-Atlanta Hotel, Atlanta, GA. Theme: "Approaches to New Partnerships". Contact: Glenn Hughes, Center for Aging, 729 Medical Towers, University of Alabama, Birmingham, AL 35294.

**April 27-30. Association for Arid Lands Studies Annual Meeting.** Albuquerque, NM. Contact: John G. Hehr, AALS Program Chair, Department of Geography, University of Arkansas, Fayetteville, AR 72701.

**April 27-30. Western Social Science Association.** Albuquerque, NM. Contact: Richard I. Wark, Department of Social Sciences, College of Santa Fe, Santa Fe, NM 87501.

**April 28-29. Prohibition and Repeal Conference.** Wilmington, DE. Theme: "Prohibition 50 Years Later: Implications for Law, Alcohol and Order". Contact: Prohibition Conference, Eleutherian Mills Historical Library, Box 3630, Wilmington, DE 19807; (302) 658-2401.

**April 28-30. North Central Sociological Association Annual Meeting.** Holiday Inn on the Lane, Columbus, OH. Theme: "The Future of Social Inequality: Class, Race and Sex". Contact: Carolyn C. Perrucci, Program Chair, Department of Sociology & Anthropology, Purdue University, West Lafayette, IN 47907; (317) 494-4696.

**April 30. 10th Annual Sociology/Anthropology Undergraduate Research Conference.** University of Santa Clara, Santa Clara, CA. Contact: John J. Sewart, Department of Sociology, University of Santa Clara, Santa Clara, CA 95053; (408) 984-4508.

**April 30. Massachusetts Sociological Association Spring Meeting.** Northeastern University, Boston, MA. Contact: Professor Bruce MacMurray, Department of Sociology, Northeastern University, Boston, MA 02115.

# Congressional Fellowship Provides New Insights for Sociologist

This may be a particularly important moment for social and behavioral scientists to understand how decisions about national policy are made, how issues are defined, and how funds are allocated. We face shrinking federal support for social research, politicization of funding decisions, and heightened concern about the failure of government to address social problems. Sociologists are affected in many ways by actions taken in Washington. If we are to have a role in shaping these actions, we must gain a better understanding of government policy-making.

This year, I have had a valuable opportunity to be a participant observer in the work of the United States Congress as a Congressional Science Fellow. Congressional Science Fellowships are sponsored by the American Association for the Advancement of Science (AAAS) in conjunction with professional societies in the natural and social sciences, the humanities, and engineering.

Fellows are selected and funded by their respective professional societies to participate in the program, with an extensive orientation, seminar, and support program provided by AAAS. My fellowship is being sponsored by the Society for Research in Child Development, and others are offered by the American Psychological Association and the American Historical Association. While the

ASA does not currently sponsor fellows, preliminary exploration of doing so is now taking place. A summer fellowship program in Congress will be offered by ASA this year. (See article on page 4.)

Congressional Science Fellows come from a variety of settings, including universities, research institutes, government agencies, and private industry. All science fellows have terminal degrees, usually PhDs, and they may be either mid-career professionals or individuals such as myself with recent doctorates.

After several weeks of an excellent orientation on Congress and the Federal Government in early September, fellows find placements for themselves in Congressional offices. One-page resumes are prepared, a difficult and sometimes painful process for those with many professional accomplishments. Since Members of Congress and their staffs are reputed to be unwilling to read anything more than one page long, succinct ways must be found to demonstrate depth and breadth of knowledge, professional stature, and political savvy in terms relevant to Capitol Hill staffers who are typically lawyers, politicians, or liberal arts generalists. Armed with resumes and hubris, fellows seek placements in the personal offices of representatives or senators, on committee or subcommittee staffs, or in support

agencies such as the Congressional Budget Office.

Placements are found on the basis of personal interests, professional qualifications, and particularistic factors. Most fellows seek placements in keeping with their political orientations and personal styles. The match of academic credentials and Congressional concerns was not always clear, and social scientists had particular difficulty in establishing their expertise as relevant. I found that offices where people had some graduate training in social science were most interested in having me join them as a fellow.

An additional problem was that many staff were unwilling to share their work with a nonpolitical "expert" who might make political blunders or conceivably be after someone's job. Many offices were used to having college age interns to run errands, but didn't know what to do with a professional scientist. Offices most anxious to have fellows were those of relatively junior members of Congress whose staffs needed technical expertise, or offices with a particular project on which they wanted help.

Finally, factors such as the availability of office space (a surprisingly scarce commodity in Congress) or the geographic origins of the fellow entered into the placement process. At various times, I claimed affiliation with

various states based on every place I had ever lived or attended school.

After several weeks of phone calls and visits, each of us found a placement. In this fellowship year, we all started out just as Congress began a two-month recess for the 1982 elections. With little going on, we were able to learn the local language and customs in a relatively relaxed way. My own assignments were typical of those that would be given to any legislative assistant—reading and summarizing reports for the Congressman; answering constituent mail; preparing policy statements, speeches, and some minor pieces of legislation; and meeting with constituents, lobbyists, and others interested in the issues I am responsible for.

My major areas of responsibility have been issues and legislation affecting children and senior citizens, federal statistical programs, and entitlement programs. I have also been asked on an ad hoc basis to cover such diverse issues as cystic fibrosis research at the National Institutes of Health, assistance for fluorspar miners who lost their jobs because of imports, establishing an office for the Bicentennial of the House of Representatives, and the preparation of a resolution commending Asian-Americans of Indian descent.

Halfway into my fellowship year, the highlight has been

organizing a Budget Committee hearing on the impact of cuts in entitlement programs. The specific focus was whether state and federal data systems could provide sufficient information on the effects of cutbacks in the Aid to Families with Dependent Children program. Preparation for the hearing included gathering information on data systems and AFDC, identifying witnesses and inviting them to testify, preparing an opening statement and questions for the Congressman, and briefing him on an issue in which I was immersed but which for him was one of a great many competing concerns.

Congressional fellowships provide insight into how federal programs are created, funded and maintained. Such fellowships also provide Congress with the knowledge and experience of the scientific community. Many fellows have gone on to serve, both formally and informally, in the brokering function described by William F. Whyte in last month's FOOTNOTES. Greater participation of sociologists in Congressional fellowship programs would have many benefits for our profession and for Congress, as well as for the participants themselves.

Richard K. Scotch

## NEW BOOKS from JOSSEY-BASS

*David Madsen*  
**SUCCESSFUL DISSERTATIONS AND THESES**

A Guide to Graduate Student Research from Proposal to Completion

A start-to-finish guide to writing dissertations and theses. Covers every phase of research activity from topic selection and proposal, through the research and writing processes, to the defense and subsequent presentation to professional audiences. Explains how to avoid the pitfalls of endless—and often needless—research and how to devise and adhere to a realistic timetable for thesis completion.

February 1983, \$12.95

*Nancy M. Crewe, Irving Kenneth Zola, and Associates*  
**INDEPENDENT LIVING FOR PHYSICALLY DISABLED PEOPLE**  
Developing, Implementing, and Evaluating Self-Help Rehabilitation Programs

Details how to design, manage, staff, and evaluate programs aimed at providing an independent life-style for disabled people. Shows how to provide a wide variety of services—including vocational, legal, medical, social, personal, and more. Provides detailed descriptions and analyses of successful programs throughout the United States and in other countries, and brings together the experiences and advice of disabled people who receive services and the professionals who provide them.

February 1983, \$19.95

*David A. Peterson*  
**FACILITATING EDUCATION FOR OLDER LEARNERS**

Helps instructors and program planners understand the educational needs, wants, and characteristics of older learners so that appealing, valuable, and efficient programs can be developed and made readily available. Investigates the attitudinal, perceptual, and physical changes that affect older learners and their participation in continuing education.

April 1983, \$18.95 (tentative)

*Aaron Rosenblatt and Diana Waldfogel, General Editors*  
**HANDBOOK OF CLINICAL SOCIAL WORK**

Brings together the most up-to-date information on all aspects of clinical social work—including its major theories, educational methods, research practices and applications, and ethical and legal issues. Fifty-two original chapters draw on social work practice theory, clinical practice theory, and empirical studies conducted in social work and related professions. Over 1,000 pages.

April 1983, \$65.00

*Thelma Falk Baily and Walter Hampton Baily*  
**CHILD WELFARE PRACTICE**  
A Guide to Providing Effective Services for Children and Families

Focuses on what practitioners who serve children and families need to know and do in their daily work. Covers all major types of services for children and families—including day care, foster home care, residential care, and various protective services for the abused or neglected child. Uses case examples to illustrate practice-proven techniques for effectively interviewing clients, assessing their problems, and recommending appropriate treatment.

March 1983, \$15.95

*David R. Powers and Mary F. Powers*  
**MAKING PARTICIPATORY MANAGEMENT WORK**  
Leadership of Consultive Decision Making in Academic Administration

Shows how college and university administrators can make participatory decision making work efficiently and effectively on a day-to-day basis. Demonstrates how to use consultation to handle such issues as program planning, budgeting, evaluation, retrenchment, and appellate procedures. Discusses the difficulties of the consultive process when a situation is emotionally charged and must be resolved quickly.

May 1983, \$15.95 (tentative)

Order from address below or phone 415-433-1767

## Funding Opportunities

### PREDOCTORAL

A limited number of predoctoral fellowships are offered by the School of Urban and Public Affairs at Carnegie-Mellon University, the Alcohol Research Group at the Medical Research Institute of San Francisco, and the Department of Psychiatry at Washington University School of Medicine. See announcements in the postdoctoral section.

### POSTDOCTORAL

The Alcohol Research Group at the Medical Research Institute of San Francisco has a program of research training at the predoctoral and postdoctoral levels at the Department of Social and Administrative Health Sciences, School of Public Health, University of California-Berkeley. Fellowships are available for training in alcohol studies in topical areas relevant to ARG's research programs, including studies of drinking practices and problems in general populations, research in one or more cultures on the meaning and functions of alcohol consumption, etc. Monthly stipends range from \$1,115 to \$1,566, with provision for tuition and fees. Applicants should contain a c.v., list of 3 references, two examples of previous writing, and a short statement of proposed research/study. Application deadline is May 15, 1983. Contact: Postdoctoral Committee, Alcohol Research Group, School of Public Health, University of California, Berkeley, CA 94720.

Carnegie-Mellon University, School of Urban and Public Affairs is offering a unique postdoctoral program in Quantitative Methods in Criminal Justice. This program is intended to bring together specialists in disciplines related to crime and criminal justice with persons whose principal training is in methodology. All participants are expected to produce several publishable papers as a result of their participation. In addition to a stipend of at least \$13,380, all training costs and research resources are provided by the training grant. A limited number of predoctoral fellowships are also available to individuals who have already completed at least two years of graduate study. Participation in the program can begin in July, 1983; applications should be submitted as early as possible before that date. Contact: Professor Alfred Blumstein, SUPA, Carnegie-Mellon University, Pittsburgh, PA 15213; (412) 578-2175.

Stanford University invites applications for postdoctoral traineeships in a Research Training Program on Organizations and Mental Health. The research arena encompasses three areas of inquiry: (1) examination of organizations as socio-cultural contexts affecting the development and state of mental health, clinically defined, of their participants; (2) examination of mental health agencies as social instruments that deliver mental health services and affect mental health outcomes; (3) study of mental health service systems that function at local, state, and national levels. Trainee stipends range from \$13,380 to \$18,780; appointments may be for 9 or 12 months. Deadline for applications for the 1983-84 academic year are May 1, 1983, with starting dates of either July 1 or September 1. Contact: W. Richard Scott, Director, Research Training Program on Organizations and Mental Health, Department of Sociology, Stanford University, Stanford, CA 94305.

Washington University School of Medicine's Department of Psychiatry announces the availability of NIMH-

funded pre- and postdoctoral fellowships in psychiatric epidemiology and biostatistics for candidates with a strong quantitative background and commitment to a research career. Training will include ongoing research projects, seminars, and formal coursework. Persons with the PhD, MD, or other doctoral degree, or who anticipate completing all degree requirements before October 1, 1983, may apply for the postdoctoral position. Predoctoral appointments require concurrent enrollment in a PhD program of an academic department at Washington University. A curriculum vitae, a statement of research interests, three letters of recommendation, and examples of written work must be submitted by April 15, 1983. Contact: Lee N. Robins, Professor of Sociology in Psychiatry, Washington University School of Medicine, 4940 Audubon Avenue, St. Louis, MO 63110; (314) 454-2829.

University of Wisconsin-Madison Postdoctoral Research Training Program is seeking sociologist applicants. This interdisciplinary NIMH-funded program focuses on improving social science research skills as applied to mental health topics, with an emphasis in the community mental health and evaluation areas. Both faculty and fellows are interdisciplinary. Program involves research-oriented fieldwork in innovative community mental health settings, collaborative and independent research, seminars and courses. Stipends range from \$13,380 to \$18,780 depending on experience. Applicants must have PhD; openings are in the summer or fall. Send inquiries and vita to: James R. Greenley, Professor of Psychiatry and Sociology, 600 Highland Avenue, Madison, WI 53792.

### OTHER

Council for International Exchange of Scholars announces the 1984-85 competition for Senior Scholar Fulbright awards for university teaching and postdoctoral research. Awards are offered in all academic fields for periods of 2-10 months, in over 100 countries. All applicants must be U.S. citizens and have had college/university teaching experience and/or a PhD or the equivalent. Application deadlines: June 15, 1983, for American Republics, Australia and New Zealand; September 15, 1983, for Africa, Asia, Europe, and the Middle East. Interested applicants may obtain application forms on college and university campuses after April 15, 1983, or write, specifying the country and field of interest, to: Council for International Exchange of Scholars, 11 Dupont Circle, Suite 300, Washington, DC 20036.

The Albert Gallatin Fellowship for International Affairs provides a stipend for living and travel expenses at the Graduate School of International Studies, University of Geneva, where doctoral instruction in international law and politics, international economics, international institutions, and international development is available. Contact: William D. Carter, FERIS Foundation of America, 5 Harvard Court, Huntington, NY 11743.

The Rockefeller Foundation announces a Residential Program for Scholars at the Bellagio Study and Conference Center, Lake Como, Italy. Each year about 80 scholars and artists from around the world are invited to spend approximately 4 weeks in residence at the Center in order to work on a book, monograph, major article, musical composition, or other creative undertaking. The Foundation provides no travel expenses; however, once at the Center, the scholar and his/her spouse are the guests of the Foundation. There is no formal application deadline, but applications should be submitted well in advance of

the dates requested. For complete information, contact: Susan E. Garfield, Coordinator, Bellagio Study and Conference Center, The Rockefeller Foundation, 1133 Avenue of the Americas, New York, NY 10036.

The U.S. Department of Education is accepting applications for Women's Educational Equity grants but discouraging multi-year proposals. The purpose of these grants is to develop model programs and educational materials designed to foster women's educational equity. This year's area of special emphasis is the problems faced by women in mathematics and science programs at all levels. Approximately 15% of the funds will go to projects dealing with Title IX compliance, 20% to projects focusing on the multiple biases encountered by minority women and girls, 20% to projects relating to disabled women and girls, and 20% to projects designed to eliminate persistent and as yet unremedied educational barriers faced by girls and women. The remaining 25% of the available funds will go to projects dealing with other topics; such projects should address the special needs of minority, economically disadvantaged, and older women. DOE expects to fund about 34 contracts in fiscal 1983. Application deadline is April 25, 1983. Contact: Leslie Wolfe, Women's Educational Equity Act Program, Department of Education, Room 2031, FOB-6, 400 Maryland Avenue, S.W., Washington, DC 20202; (202) 245-2181.

## New Programs

Southern University in New Orleans announces its Training Program for the Control of Substance Abuse. The program is designed to offer students a foundation in substance abuse prevention, education, counselor training and research, and includes 101 hours of academic courses and 36 hours in the Substance Abuse concentration. To assist students, the training program has established a library which is also open to the community and university. Six key academic presentations are available: University Program, Minor Concentration, Certificate Program, Associate of Arts Degree, Four-Year Concentration, Bachelor of Science Degree. For complete information, contact: Professor Arthur Huttick, Sociology Department, Southern University in New Orleans, 6400 Press Drive, New Orleans, LA 70126; (504) 282-4401, x234.

The U.S. Office of Human Development Services has established a Center for Adolescent Mental Health at Washington University in St. Louis. The Center will gather, synthesize, and disseminate scientifically-based information about adolescent mental health to researchers, practitioners, legislators, and the lay public. Readers are invited to take part in one or more of the following Center programs. Advances in Adolescent Mental Health: Research and Programs—Original contributions are solicited for the first volume of an annual series that concentrates upon research advances and/or program developments in adolescent mental health. Program Profiles—Readers are invited to submit profiles or nominations for exemplary research or service programs in adolescent mental health. Adolescent Mental Health Abstracts—The Center will prepare abstracts of major journal publications to be distributed free of charge on a quarterly basis to individuals or organizations who offer mental health services to adolescents. For further information, contact: Dr. Ronald A. Feldman or Dr. Arlene R. Stiffman, Center for Adolescent Mental Health, Washington University, Box 1196, St. Louis, MO 63130; (314) 889-5824.

## Letter to Editor

I very much appreciate your taking the time and trouble to respond to my obvious ire at the recent ASA questionnaire that totally ignored the existence of the non-academically employed sociologist. The greatest problem such a perspective engenders is that it leads the younger-aged professionals—particularly those who are still in college in graduate studies—to ignore the many and varied applied fields of sociology as prospective careers. I am delighted to learn that ASA will be holding workshops in the near future to promulgate knowledge concerning the many opportunities outside academia that are available to those who are properly trained and motivated. You asked that I take a few minutes to describe the type of work that we do and the necessary skills for performing this work.

Gruen Gruen + Associates is an economic and sociological research/consulting firm that specializes in land use analysis for both private and public sector clients. Our work ranges from studies and forecasts of real estate markets for private developers to impact analysis of public policy decisions and regulations for public sector clients. Sometimes the division between the work for private and public clients is far less clear, when for example we conduct studies for cities that investigate the markets for down-

town land use or for private sector clients when we evaluate the probability or likelihood that they will receive project approval.

The tools of sociology are used every day in many of our studies—for example, whenever demographic analysis, survey research or social impact analysis is called for. For those incipient sociologists who are making decisions as to whether this type of placement would be of interest to them, the following tools are not only useful, but necessary: demographic analysis, population forecasting, familiarity with the computer that goes beyond the ability to handle canned programs, a good grasp of sampling methodologies and parametric and non-parametric statistics, some knowledge of how the urban system works, and last, but by no means least, good analytical writing and communication skills. Unfortunately, we all too frequently talk with job applicants whose background and training do not provide them with the above kit bag of tools that are needed by firms like our own. We commend ASA for taking an interest in the problem and trust that this interest will translate itself into future applicants with the requisite skills.

Nina Gruen  
Principal Sociologist  
Gruen Gruen + Associates

### CRITICAL ACCLAIM:

**"One of the best pieces of work of its kind produced in the USA in the last ten years."**

—ROBERT DINGWALL, Oxford University

**"A remarkable look at the process that changes medical residents into psychiatrists. Light, a sociologist, traces many of the ills of the psychiatric profession to the tactics of social control that initiates must acquire."**

—Editors' Choice, *Psychology Today*

## BECOMING PSYCHIATRISTS

The Professional Transformation of Self  
By DONALD LIGHT

**"Becoming Psychiatrists is an important work. It represents medical sociology at its best and deserves wide readership."** —PARK ELLIOT DIETZ, *New England Journal of Medicine*

**"Light is able to achieve the detachment necessary to convey the nuances of becoming a specialist."** —CHARLES L. BOSK, *The Hastings Report*

\$6.95, paperback. At all bookstores, or order direct from the publisher



Norton  
W. W. NORTON & COMPANY, INC., 500 Fifth Avenue, New York 10110